

Supplementary information, Figure S8

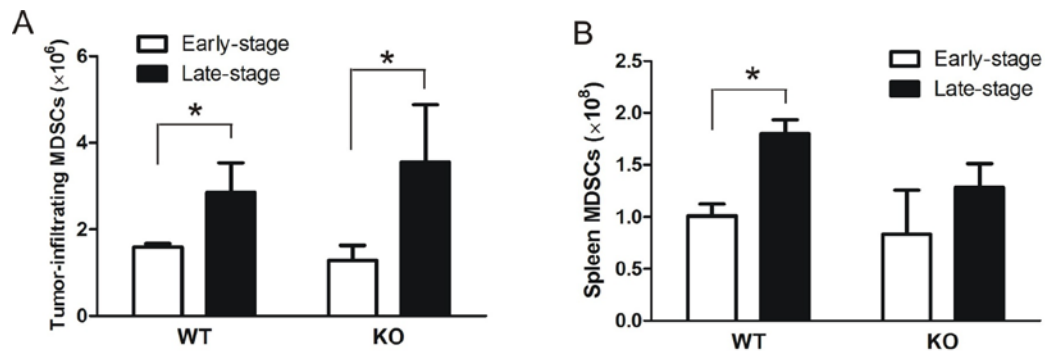


Figure S8 Measurement of MDSCs in early and late stages of 4T1 tumor growth. 10 days (early stage) and 20 days (late stage) after 4T1 cell inoculation, MDSCs in tumor-infiltrating cells (**A**) and splenocytes (**B**) from WT and KO mice were analyzed by flow cytometry and cell numbers were counted.