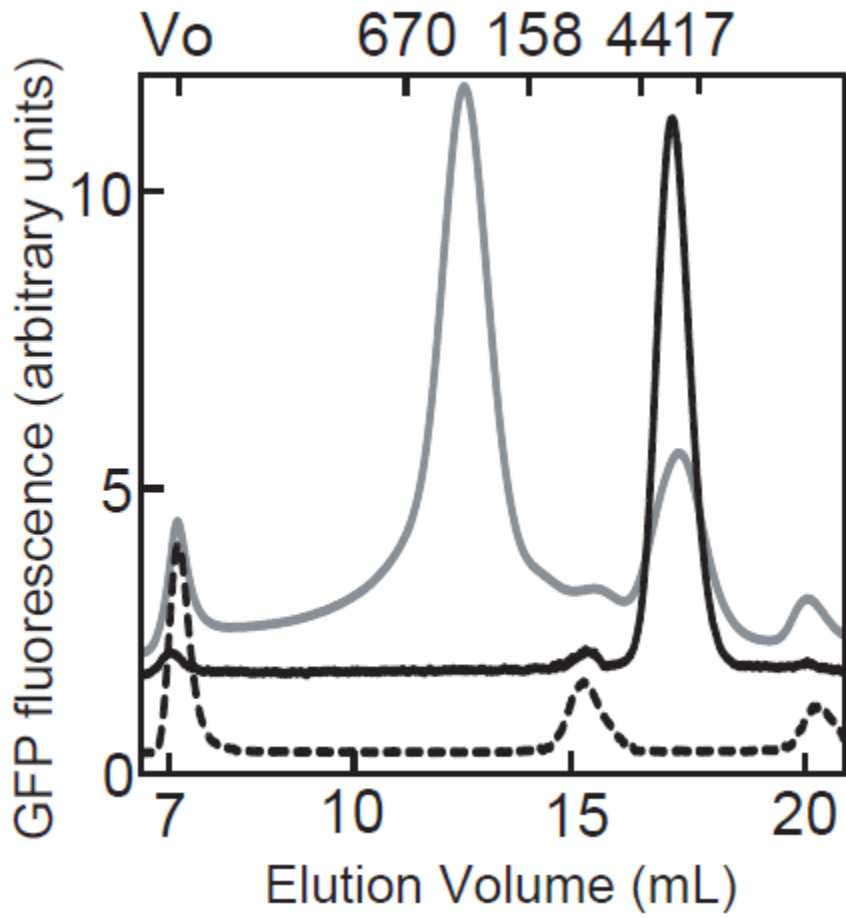


### **Supplementary Figure 1**

A crude membrane containing ABCG1-GFP (gray line) or of mock-transfected cells (dotted line) solubilized with 1% DDM and total lysate of GFP expressed cells (black line) were separated by a Superose 6 10/300 GL column. Column void volume is indicated by  $V_0$ . Molecular weight of the standards are thyroglobulin (bovine), 670,000;  $\gamma$ -globulin (bovine), 158,000; ovalbumin (chicken), 44,000; myoglobin (horse), 17,000.

### **Supplementary Figure 2**

**A** Silver staining of SDS/PAGE (5–20% gradient gel). Lane 1, size marker; Lane 2, crude membranes; Lane 3, crude membrane proteins solubilized with 0.8% Fos-choline-14; Lane 4, unbound proteins to FLAG agarose; Lane 5, washout proteins with 0.8% Fos-choline-14; Lane 6, washout proteins with 0.05% Fos-choline-14; Lane 7, purified ABCG1-GFP (0.3  $\mu$ g). Equal volumes of sample were loaded in lanes 2-6. **B** FSEC analysis of purified ABCG1-GFP.



Supplementary Fig. 1 Hirayama. H *et. al*

