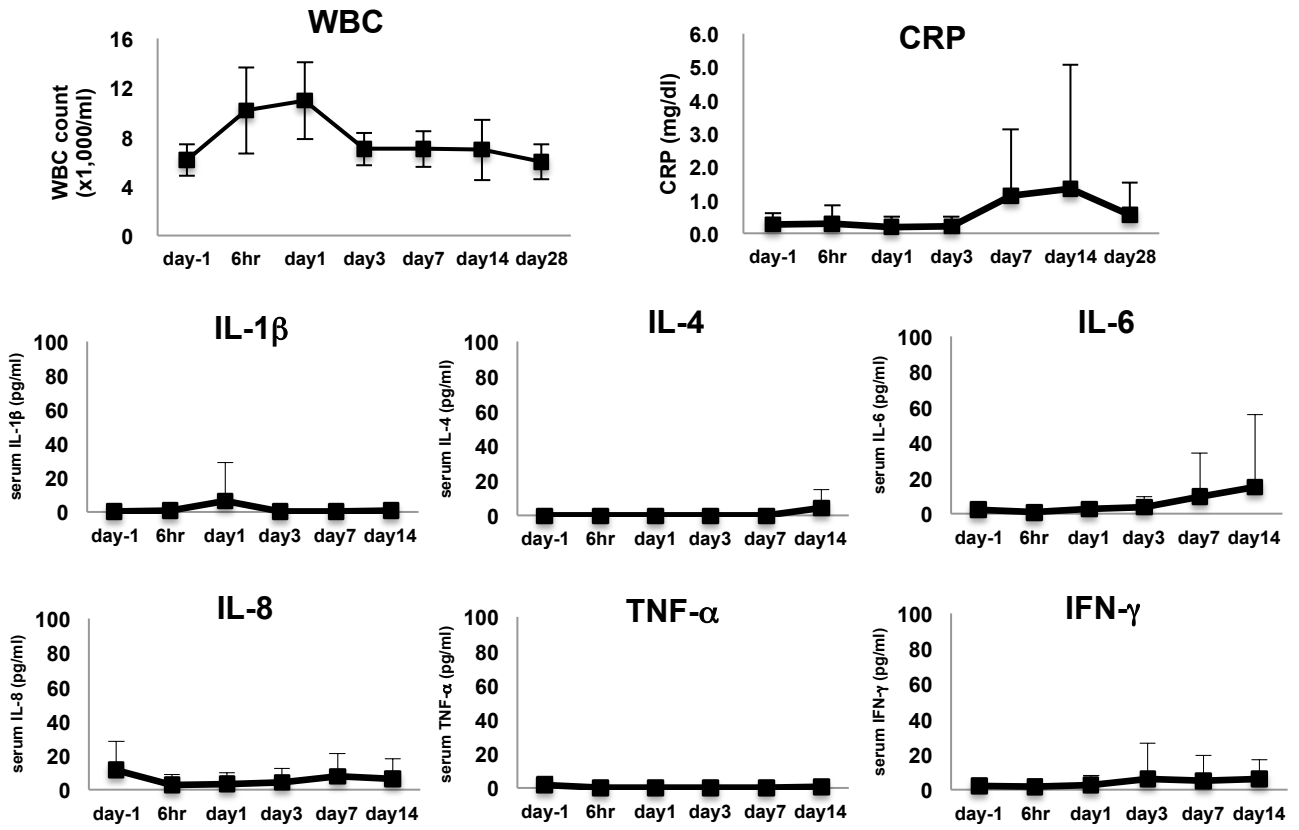
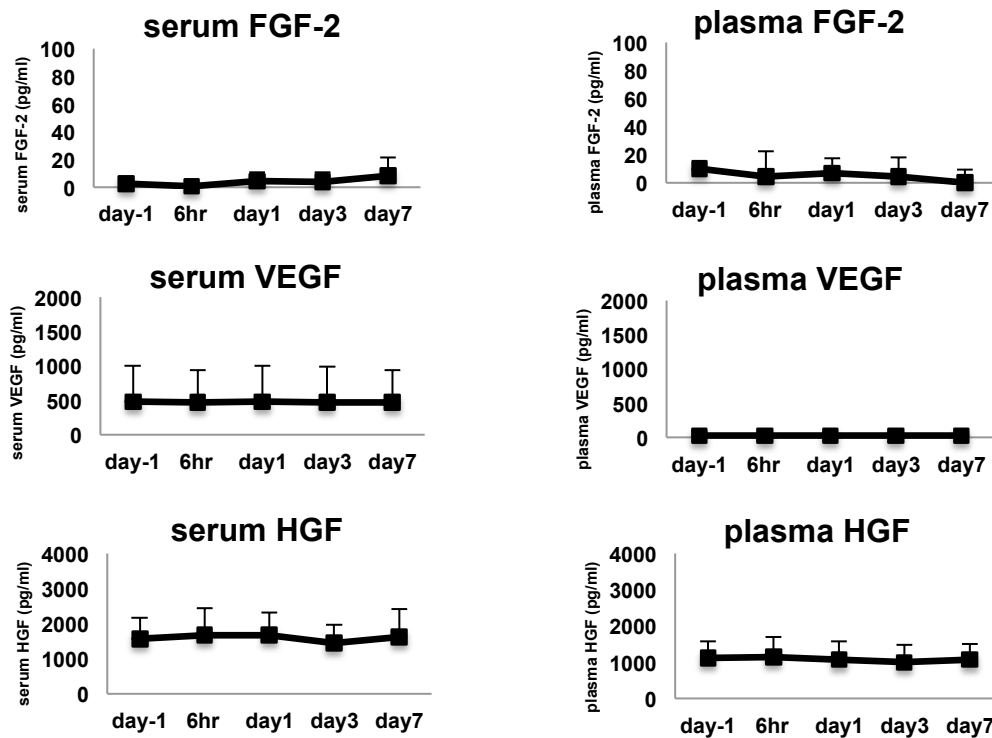


Supplementary Figure S1.

A.

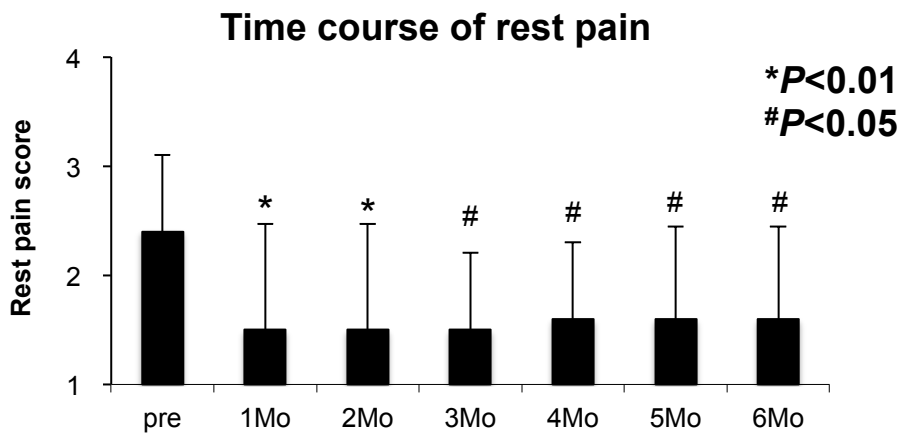


B.

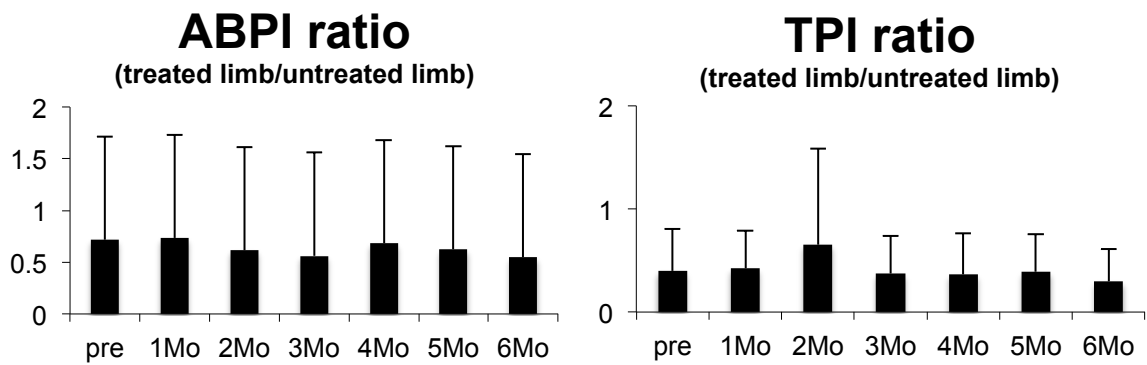


Supplementary Figure S2.

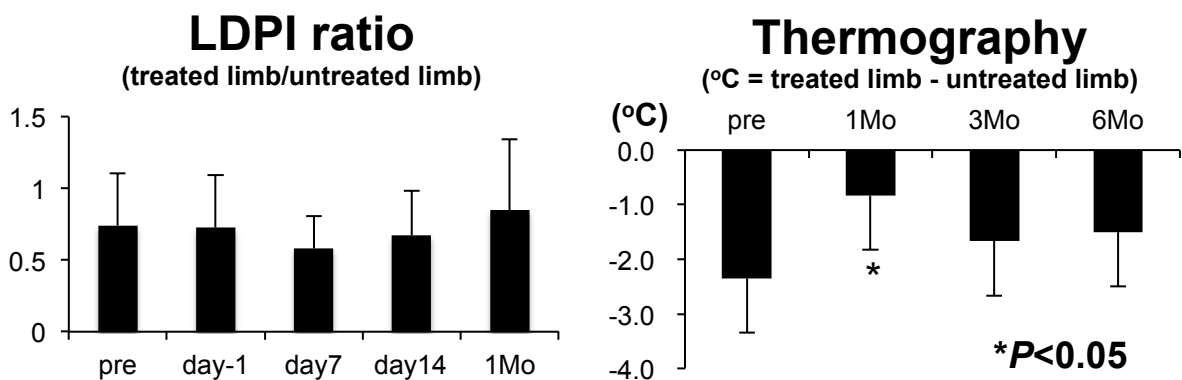
A.



B.

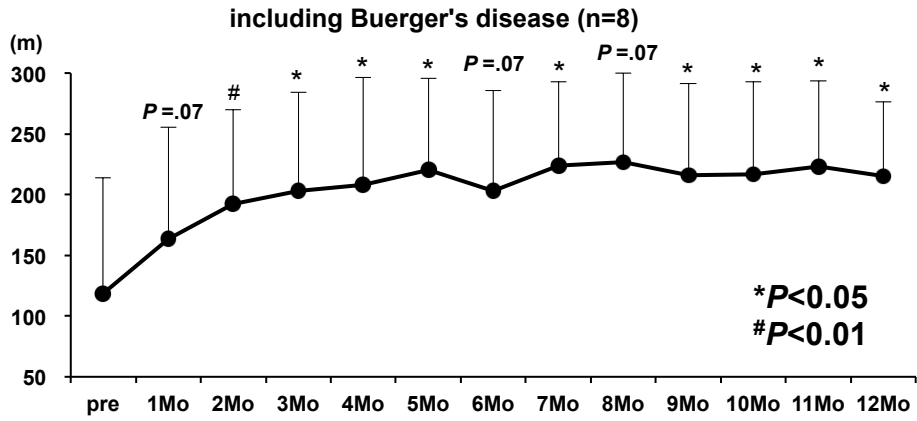


C.

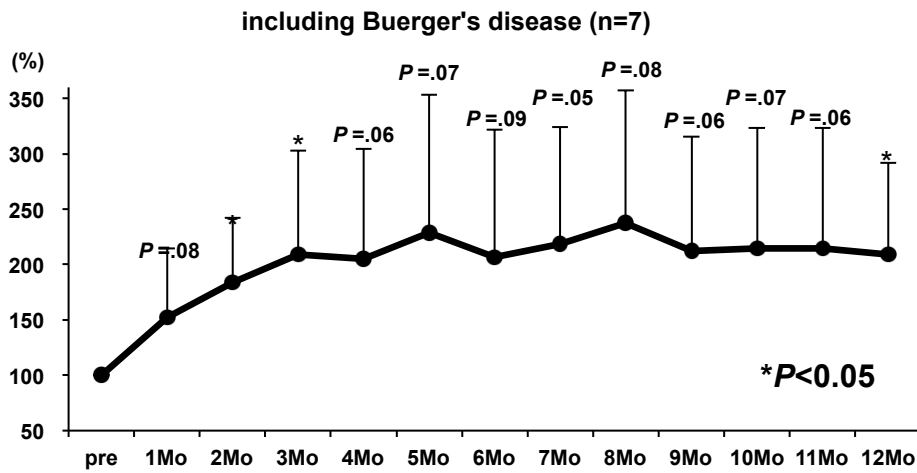


Supplementary Figure S3.

A. ACD (m)



B. Δ ACD (%)



Legends for Supplementary Figures.

Supplementary Figure S1.

A. Time courses of inflammation/immune response-related parameters, including white blood cell count (WBC), serum C-reactive protein (CRP) level, serum interleukin-1 β (IL-1 β), serum IL-4, serum IL-6, serum IL-8, serum tumor necrosis factor- α (TNF- α), and interferon- γ (IFN- γ). Blood samples were collected at each time point, and subjected to laboratory examination. Each proinflammatory cytokine level was determined by specific ELISA as manufactures' instructions.

B. Time courses of circulating angiogenic factors, including serum and plasma FGF-2, VEGF, and HGF. Blood samples were collected at each time point, and subjected to the specific ELISA as manufactures' instructions.

Supplementary Figure S2.

Time courses of rest pain score (a), ankle-brachial pressure index (ABPI) and toe pressure index (TPI) (b), laser Doppler perfusion index (LDPI) ratio, and thermography (c), related to efficacy. * $p < 0.01$, # $p < 0.05$.

Supplementary Figure S3.

Time course of A: absolute claudication distance (ACD; m, n = 8) and B: Change of ACD (Δ ACD: %, n = 7). * $p < 0.05$.

The data of the two patients with Buerger's disease were included.

Supplementary Table S1. Patients Cohort

cohort (dose/60kg)	case No.	treatment				
		total dose (ciu/head)	injection sites (30 injections)			
			Upper thigh	Lower thigh	Calf	Foot pad
Stage 1 (5×10^7 ciu)	102	5.21×10^7	10	10	10	0
	103	5.25×10^7	7	8	10	5
	105	3.98×10^7	0	12	18	0
Stage 2 (2×10^8 ciu)	201	1.63×10^8	10	10	10	0
	203	2.11×10^8	10	10	10	0
	204	1.79×10^8	10	10	10	0
Stage 3 (1×10^9 ciu)	303	0.87×10^9	0	9	21	0
	304	1.20×10^9	0	14	16	0
	305	1.07×10^9	6	9	15	0
Stage 4 (5×10^9 ciu)	401	7.70×10^9	0	0	30	0
	403	6.35×10^9	0	6	20	4
	405	4.98×10^9	0	14	16	0

Supplementary Table S2. Virus Shedding

Genome copies (gc/μl): urine

Case No.	pre	D0 (6 hrs)	D1	D3	D7	D8 - 15
102	<0.1	<0.1	<0.1	<0.1	<0.1	<0.1
103	<0.1	<0.1	<0.1	<0.1	<0.1	<0.1
105	<0.1	<0.1	<0.1	<0.1	<0.1	<0.1
201	<0.1	<0.1	<0.1	<0.1	<0.1	<0.1
203	<0.1	<0.1	<0.1	<0.1	<0.1	<0.1
204	<0.1	<0.1	<0.1	<0.1	<0.1	<0.1
303	<0.1	<0.1	<0.1	<0.1	<0.1	<0.1
304	<0.1	<0.1	<0.1	<0.1	<0.1	<0.1
305	<0.1	<0.1	<0.1	<0.1	<0.1	<0.1
401	<0.1	<0.1	<0.1	<0.1	<0.1	<0.1
403	<0.1	<0.1	<0.1	<0.1	<0.1	<0.1
405	<0.1	<0.1	<0.1	<0.1	<0.1	<0.1

Genome copies (gc/μl): whole blood

Case No.	pre	D0 (6 hrs)	D1	D3	D7	D8 - 15
102	<0.1	<0.1	<0.1	<0.1	<0.1	<0.1
103	<0.1	<0.1	<0.1	<0.1	<0.1	<0.1
105	<0.1	<0.1	<0.1	<0.1	<0.1	<0.1
201	<0.1	<0.1	<0.1	<0.1	<0.1	<0.1
203	<0.1	<0.1	<0.1	<0.1	<0.1	<0.1
204	<0.1	<0.1	<0.1	<0.1	<0.1	<0.1
303	<0.1	≥0.1	≥0.1	<0.1	<0.1	<0.1
304	<0.1	<0.1	<0.1	<0.1	<0.1	<0.1
305	<0.1	<0.1	<0.1	<0.1	<0.1	<0.1
401	<0.1	≥0.1	≥0.1	<0.1	<0.1	<0.1
403	<0.1	<0.1	<0.1	<0.1	<0.1	<0.1
405	<0.1	≥0.1	≥0.1	≥0.1	≥0.1	<0.1

Hemagglutinating activity: urine

Case No.	pre	D0 (6 hrs)	D1	D3	D7	D8 - 15
102	(-)	(-)	(-)	(-)	(-)	(-)
103	(-)	(-)	(-)	(-)	(-)	(-)
105	(-)	(-)	(-)	(-)	(-)	(-)
201	(-)	(-)	(-)	(-)	(-)	(-)
203	(-)	(-)	(-)	(-)	(-)	(-)
204	(-)	(-)	(-)	(-)	(-)	(-)
303	(-)	(-)	(-)	(-)	(-)	(-)
304	(-)	(-)	(-)	(-)	(-)	(-)
305	(-)	(-)	(-)	(-)	(-)	(-)
401	(-)	(-)	(-)	(-)	(-)	(-)
403	(-)	(-)	(-)	(-)	(-)	(-)
405	(-)	(-)	(-)	(-)	(-)	(-)

Hemagglutinating activity: whole blood

Case No.	pre	D0 (6 hrs)	D1	D3	D7	D8 - 15
102	(-)	(-)	(-)	(-)	(-)	(-)
103	(-)	(-)	(-)	(-)	(-)	(-)
105	(-)	(-)	(-)	(-)	(-)	(-)
201	(-)	(-)	(-)	(-)	(-)	(-)
203	(-)	(-)	(-)	(-)	(-)	(-)
204	(-)	(-)	(-)	(-)	(-)	(-)
303	(-)	(-)	(-)	(-)	(-)	(-)
304	(-)	(-)	(-)	(-)	(-)	(-)
305	(-)	(-)	(-)	(-)	(-)	(-)
401	(-)	(-)	(-)	(-)	(-)	(-)
403	(-)	(-)	(-)	(-)	(-)	(-)
405	(-)	(-)	(-)	(-)	(-)	(-)

Supplementary Table S3. Pulse-volume Recording

Case No.	limb		pre	1Mo	2Mo	3Mo	4Mo	5Mo	6Mo
102	treated	R	(-)	(-)	(-)	(-)	(-)	(-)	(-)
	contralateral	L	++	++	++	++	++	++	++
103	treated	L	(-)	Not available due to major amputation					
	contralateral	R	++						
105	treated	L	(-)	(-)	Not available due to minor amputation				
	contralateral	R	++	++					
201	treated	R	(-)	(-)	+	(-)	(-)	+	(-)
	contralateral	L	(-)	(-)	(-)	(-)	(-)	(-)	(-)
203	treated	L	++	++	++	+	+	+	++
	contralateral	R	++	++	++	+	+	+	++
204	treated	R	(-)	++	(-)	+	+	+	+
	contralateral	L	++	++	++	++	++	++	++
303	treated	R	+	+	*1	+	+	(-)	+
	contralateral	L	+	++	+	+	+	+	+
304	treated	R	(-)	+	+	+	(-)	(-)	(-)
	contralateral	L	++	++	++	++	++	++	++
305	treated	L	(-)	(-)	(-)	(-)	(-)	(-)	+
	contralateral	R	+	++	++	++	++	++	++
401	treated	R	+	(-)	(-)	(-)	(-)	+	+
	contralateral	L	++	++	++	++	++	++	++
403	treated	R	(-)	+	+	(-)	+	+	(-)
	contralateral	L	++	++	++	++	++	++	++
405	treated	R	(-)	+	+	+	+	++	+
	contralateral	L	++	++	++	++	++	++	++

*1: not available