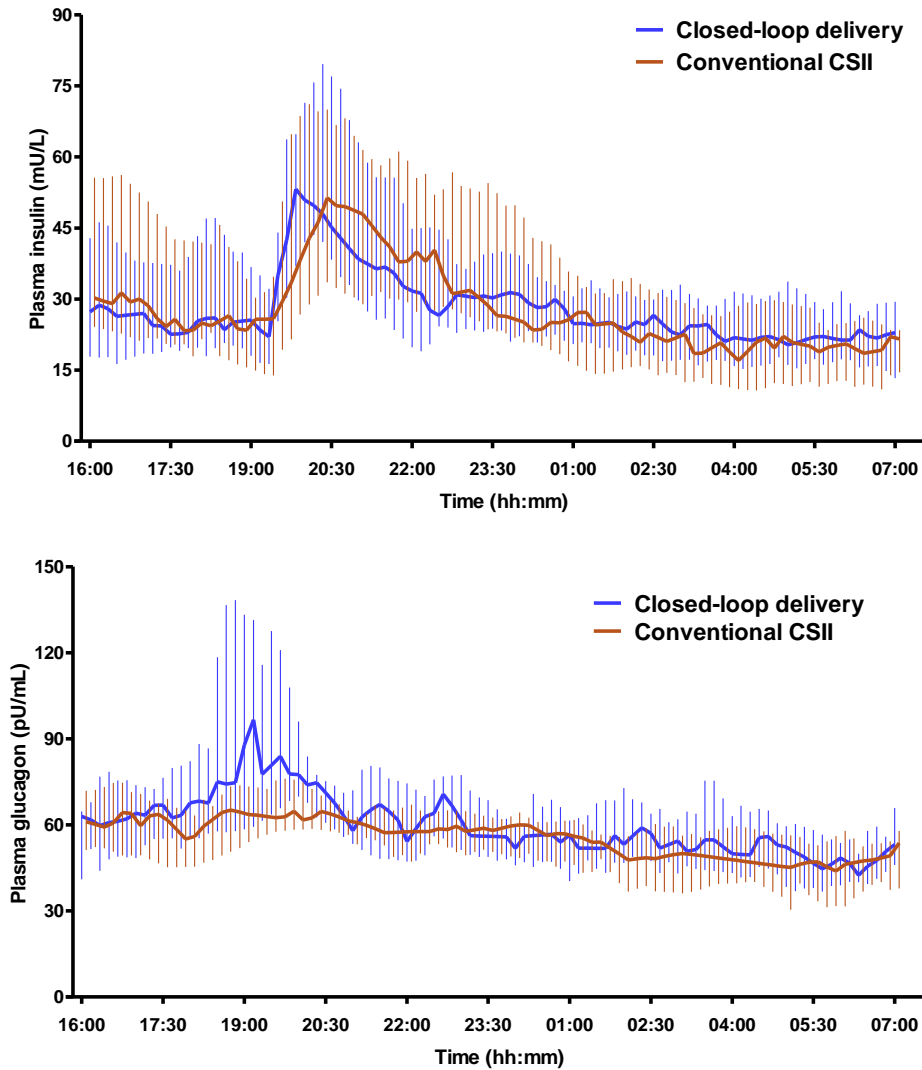


Appendix 3 (as supplied by the authors): Supplementary Figures and Tables.



Supplement Figure 1. Profiles (medians and interquartile ranges) of plasma insulin (top panel) and plasma glucagon concentrations (bottom panel). CSII = continuous subcutaneous insulin infusion.

Supplement Table 1. Baseline characteristics of study participants (n = 15, female/male = 9/6).

Characteristic	Mean ± SD
Age (years)	47.1 ± 12.3
Weight (kg)	74.2 ± 16.9
Body mass index (kg/m ²)	25.9 ± 4.6
HbA1c	7.9 ± 0.7
Duration of diabetes (years)	26.5 ± 14.8
Total daily insulin dose (U/kg)	0.57 ± 0.12

Supplement Table 2. Characteristics of glucagon delivery. Results are median (IQR) or mean \pm SD as appropriate.

Characteristic	Overall study period	Night period*
Total glucagon delivery (mg)	0.076 (0.016 to 0.17)	0.009 (0.0 to 0.054)
Number of boluses per experiment (unitless)	4 \pm 3	1.6 \pm 2.2
Size of bolus (mg)	0.014 (0.013 to 0.036)	0.014 (0.011 to 0.028)
Time since last insulin delivery (min)	40 \pm 35	57 \pm 42
Glucose level at the time of bolus delivery (mmol/l)	4.9 (4.2 to 6.0)	5.0 (4.6 to 5.8)
Glucose rate of change at the time of bolus delivery (mmol/l per hour)	-0.8 (-2.0 to 0.3)	-0.5 (-1.8 to 0.1)
Glucose level 20 minutes post bolus delivery (mmol/l)	5.3 (4.6 to 6.3)	5.2 (4.6 to 5.9)
Glucose rate of change 20 minutes post bolus delivery (mmol/l per hour)	1.8 (0.3 to 2.6)	0.6 (-0.1 to 2.0)

* Between 23h00 and 7h00.