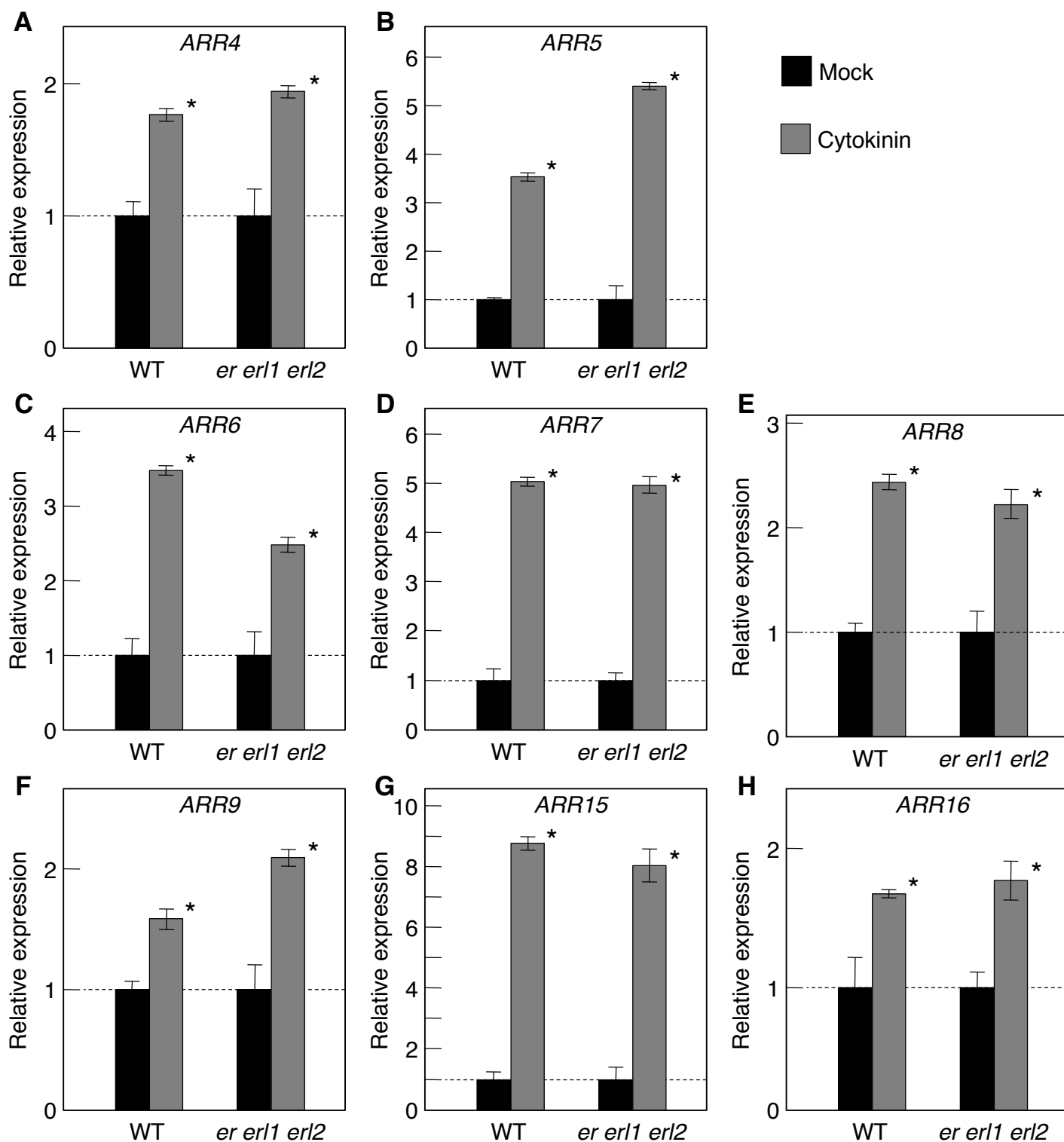


# Supplemental Figure S1

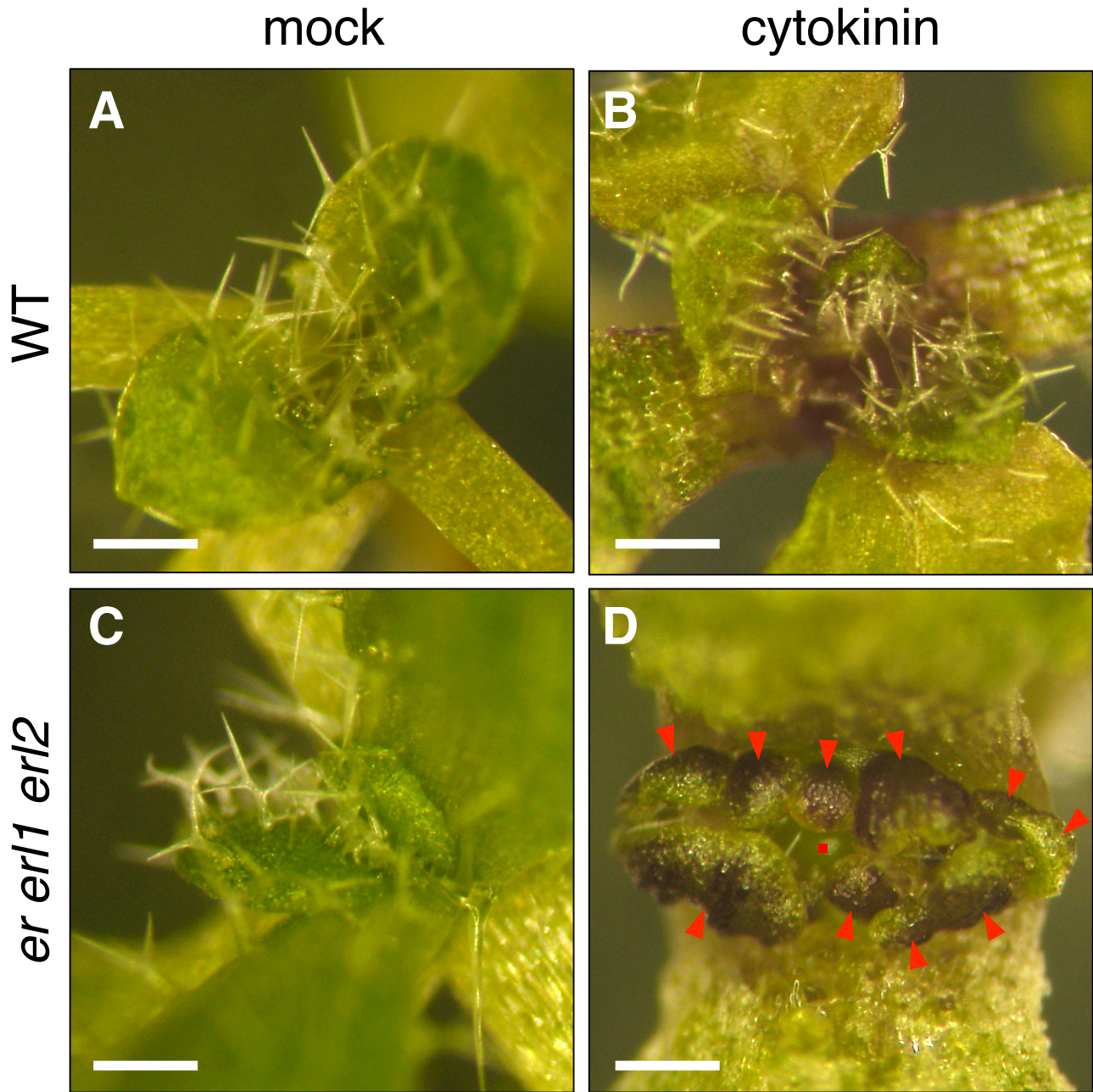


## Supplemental Figure S1

### Expression levels of several *type-A* ARRs with/without cytokinin treatment.

Aerial parts of 10-day-old plants grown on normal or cytokinin-containing media were analyzed by quantitative RT-PCR. The expression levels were normalized with respect to that of  $\beta$ -*TUBULIN* and the normalized values without cytokinin treatment were set at 1. Data shown are means of four independent samples (10 individuals were collected as a pool for each sample) with error bars representing s.d. Asterisks indicate significant differences by Student's *t* test ( $P < 0.05$ ).

# Supplemental Figure S2

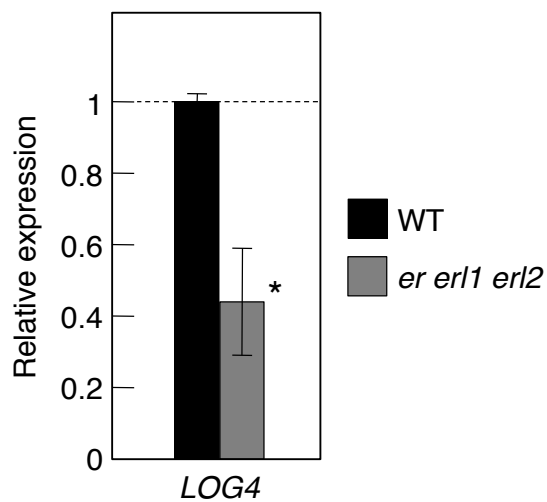


**Supplemental Figure S2**

**Photographs of vegetative shoot with/without cytokinin treatment.**

12-day-old plants grown on normal or cytokinin-containing media were photographed. Arrowheads indicate excessive formation of malformed leaves. The dot indicates a significantly enlarged SAM. Bars = 250  $\mu$ m

# Supplemental Figure S3



## Supplemental Figure S3 Expression levels of *LOG4*.

Aerial parts of 10-day-old seedlings were analyzed by quantitative RT-PCR. The expression levels were normalized with respect to that of  $\beta$ -*TUBULIN*. Data shown are means of three independent samples (10 individuals were collected as a pool for each sample) with error bars representing s.d. Asterisks indicate significant differences by Student's *t* test ( $P < 0.05$ ).