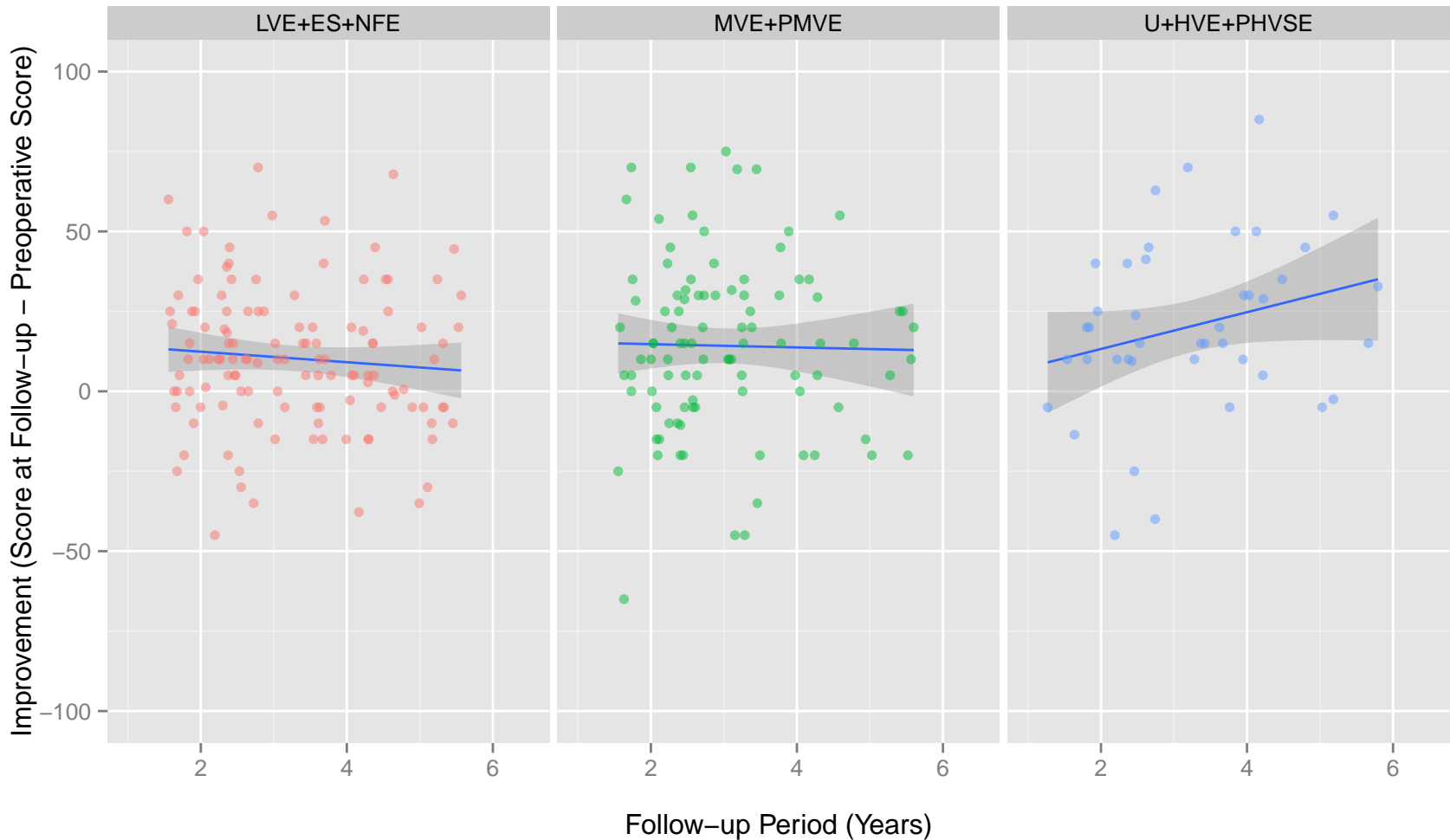
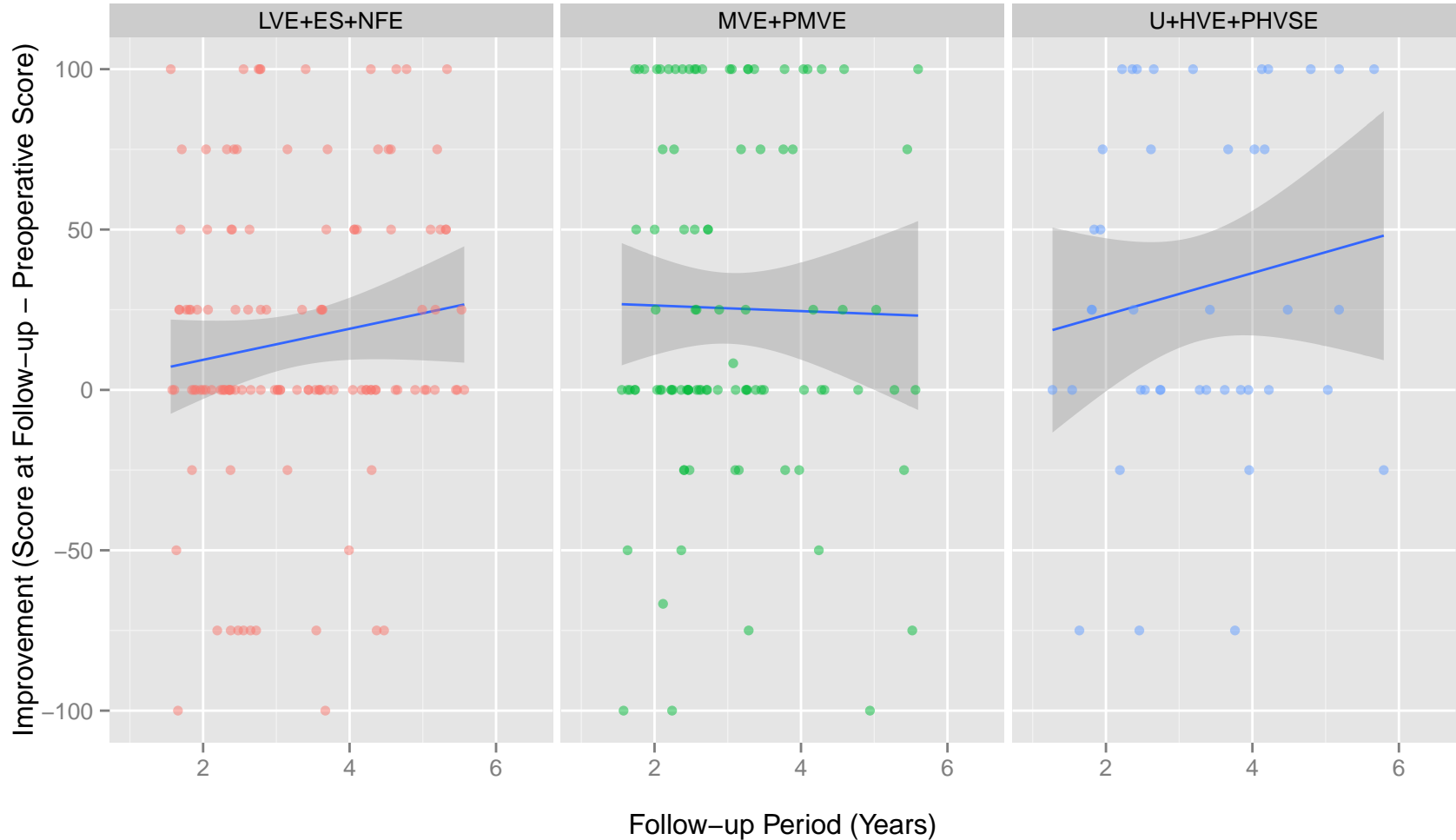


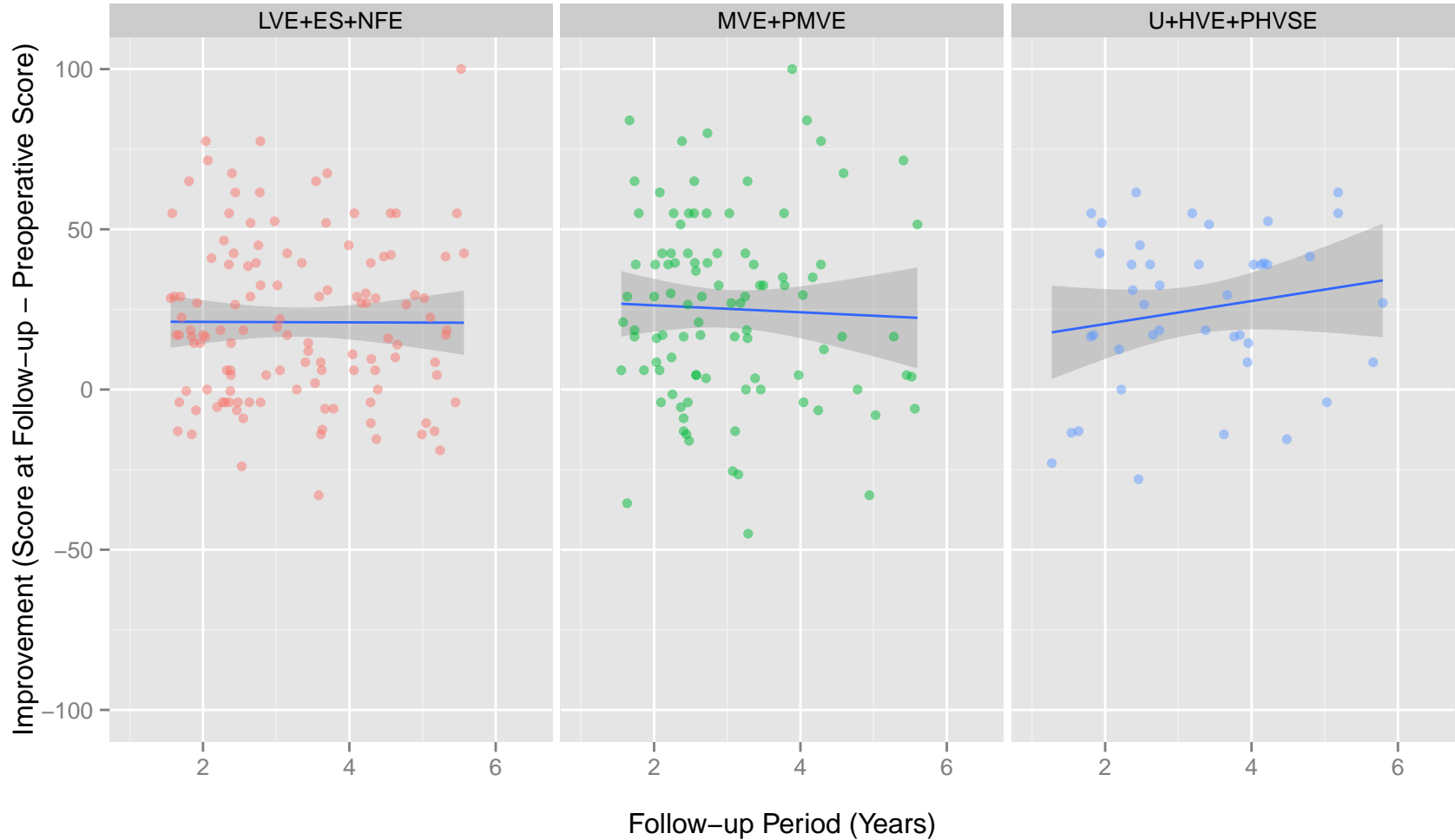
Improvement in Physical Functioning in Time, per Highest Completed Level of Schooling



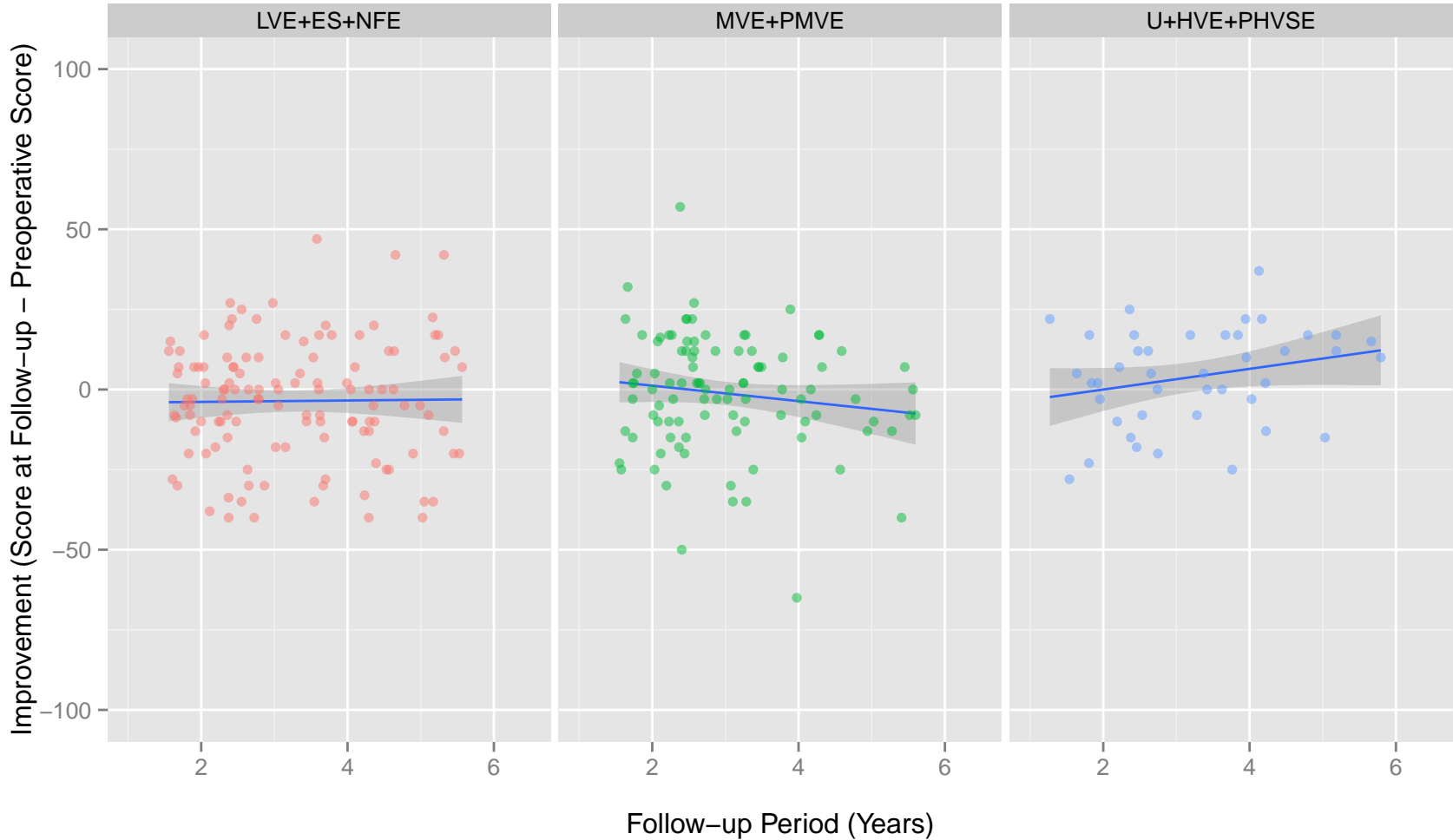
Improvement in Role-Physical in Time, per Highest Completed Level of Schooling



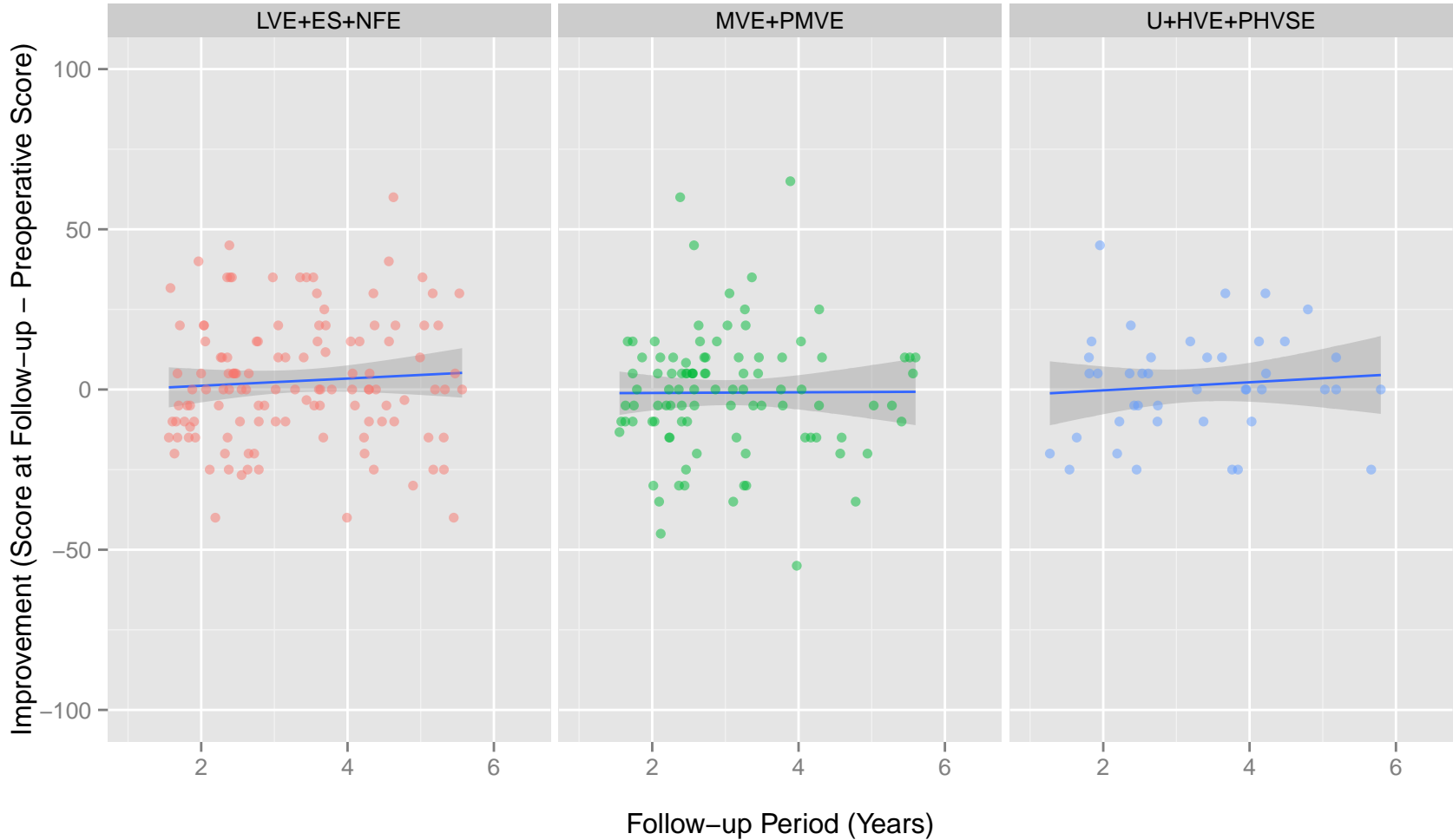
Improvement in Bodily Pain in Time, per Highest Completed Level of Schooling



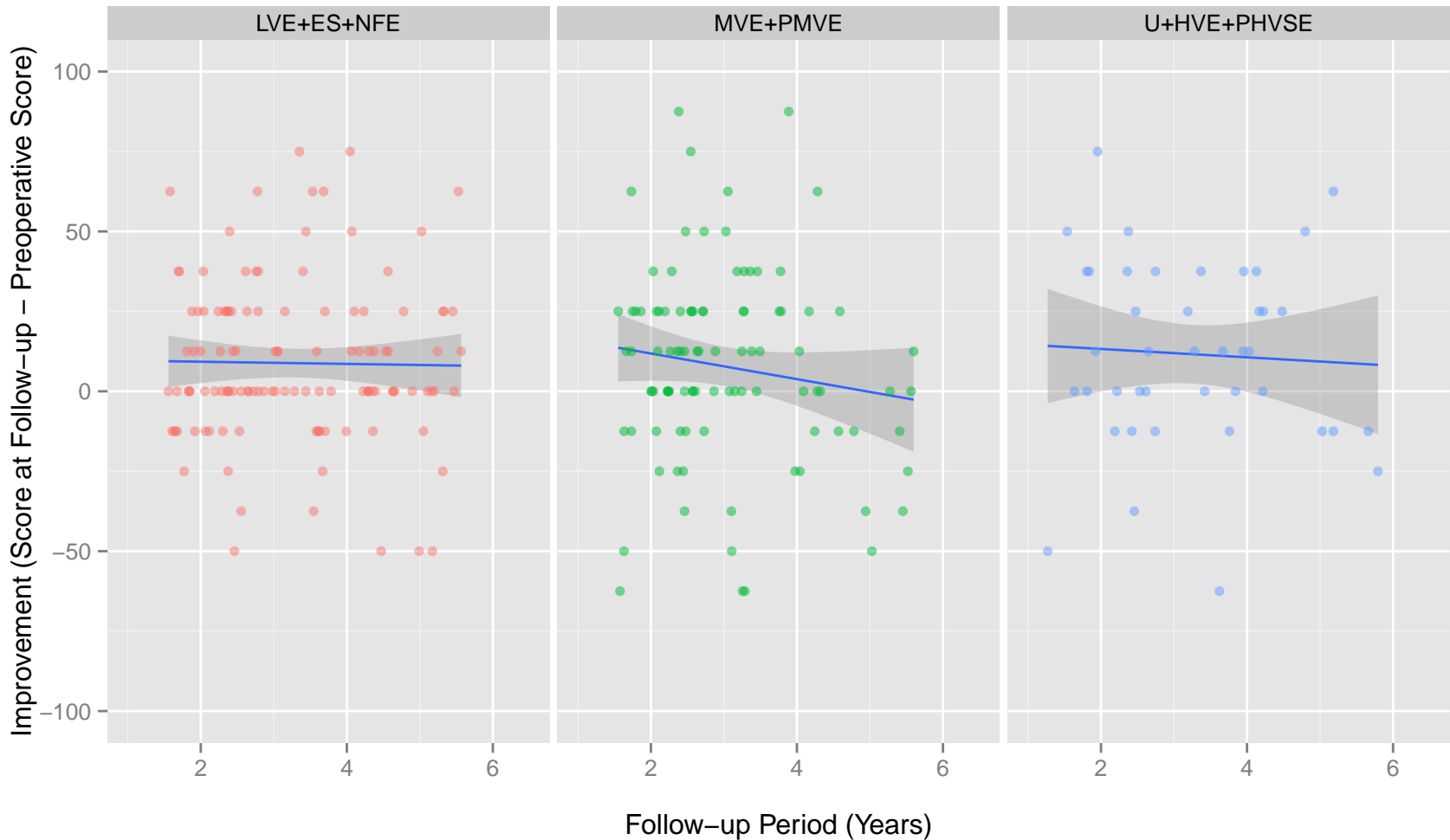
Improvement in General Health in Time, per Highest Completed Level of Schooling



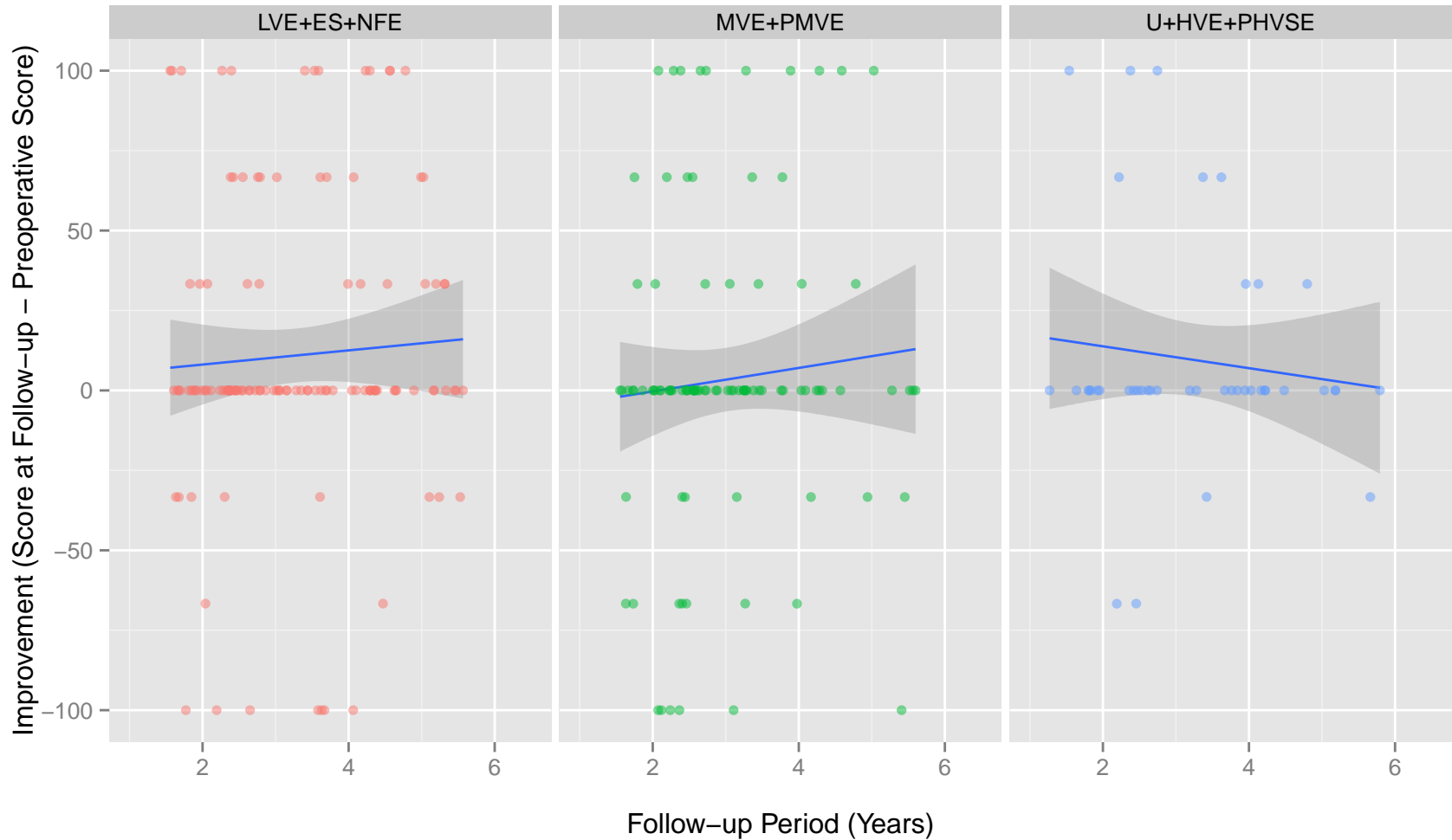
Improvement in Vitality in Time, per Highest Completed Level of Schooling



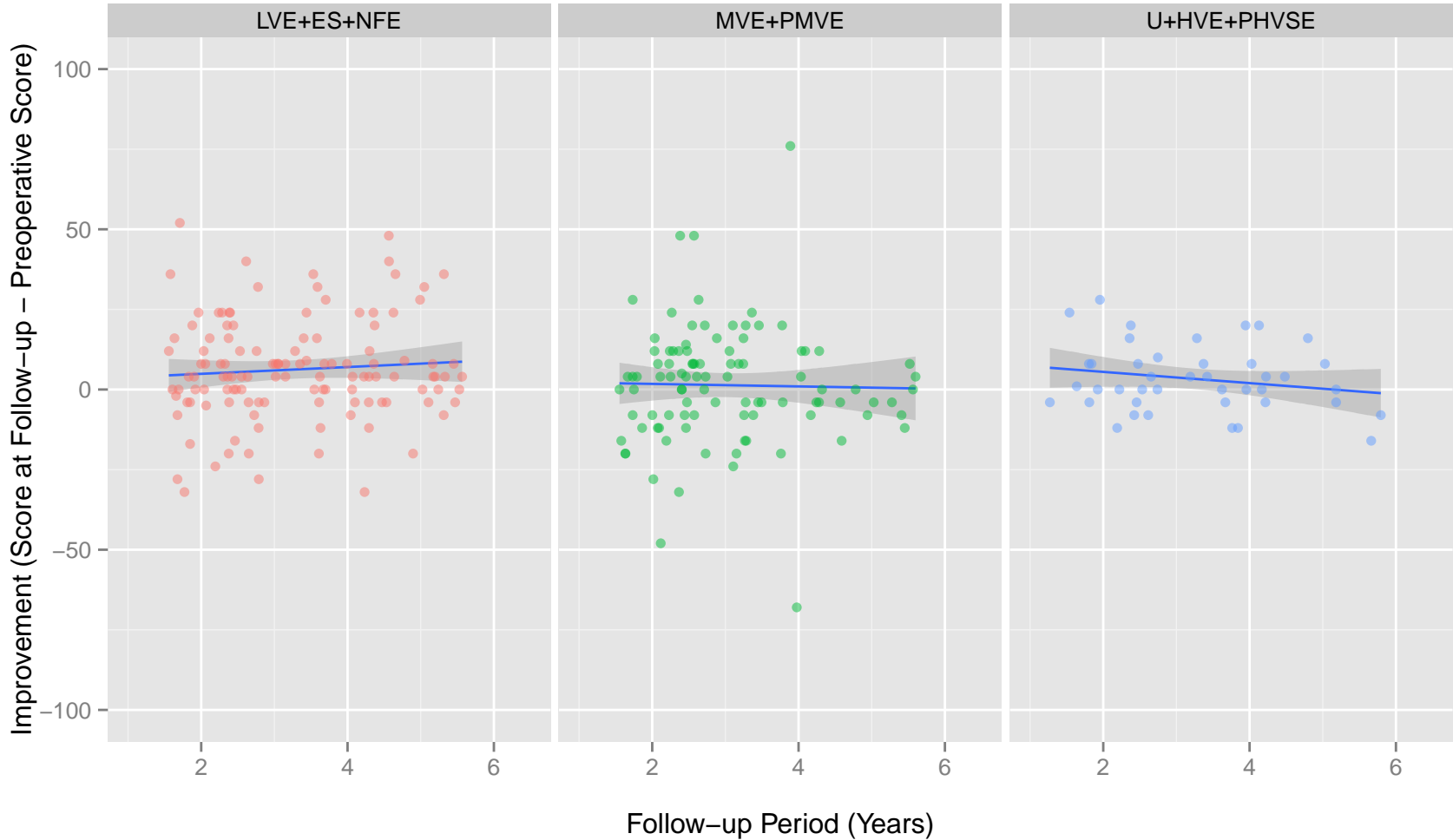
Improvement in Social Functioning in Time, per Highest Completed Level of Schooling



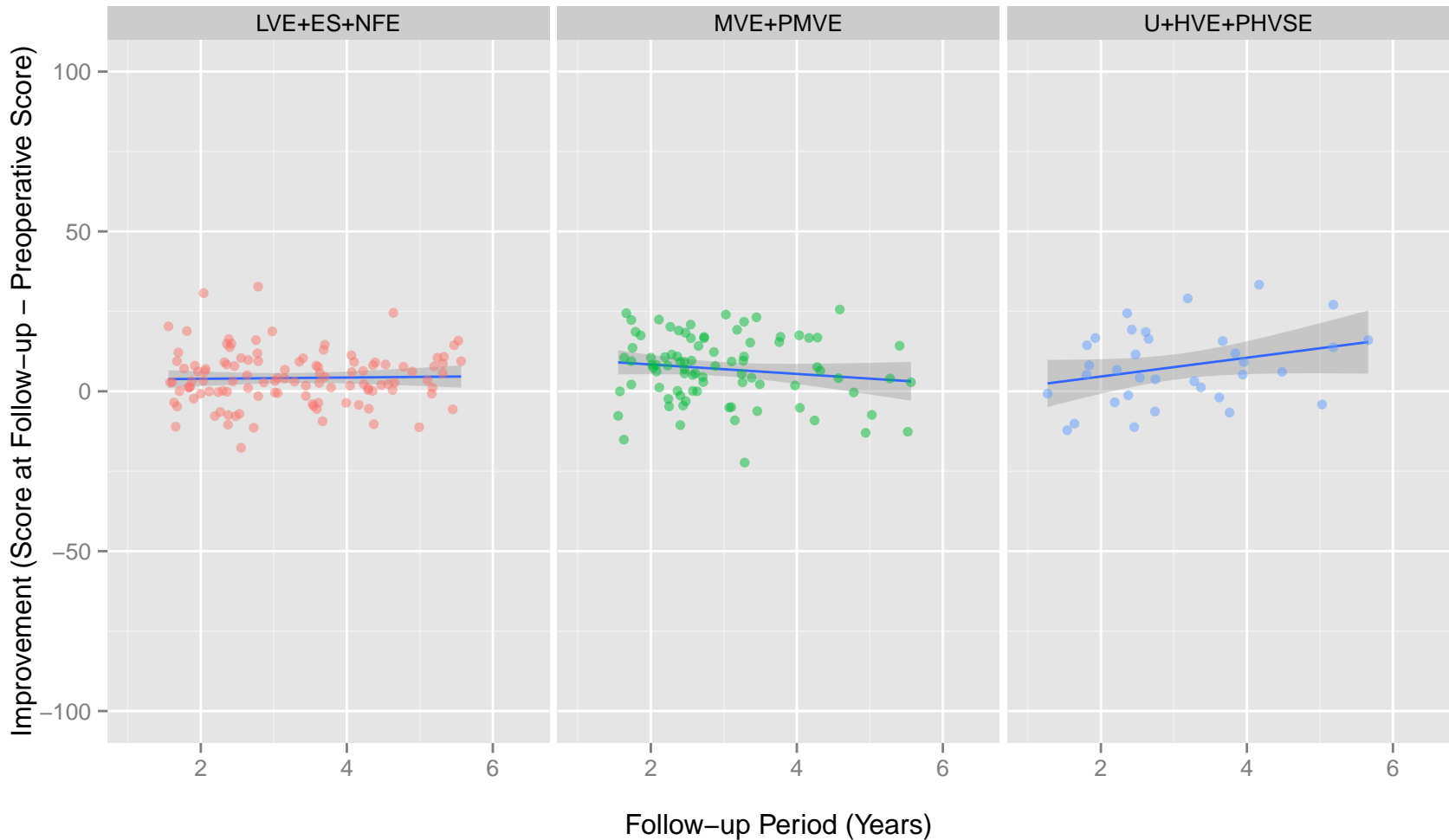
Improvement in Role-Emotional in Time, per Highest Completed Level of Schooling



Improvement in Mental Health in Time, per Highest Completed Level of Schooling



Improvement in Physical Component Summary in Time, per Highest Completed Level of Schooling



Improvement in Mental Component Summary in Time, per Highest Completed Level of Schooling

