



## **Supplemental Material to:**

**Valentina Barbetti, Antonella Gozzini, Giulia Cheloni,  
Ilaria Marzi, Emiliano Fabiani, Valeria Santini, Persio Dello  
Sbarba and Elisabetta Rovida**

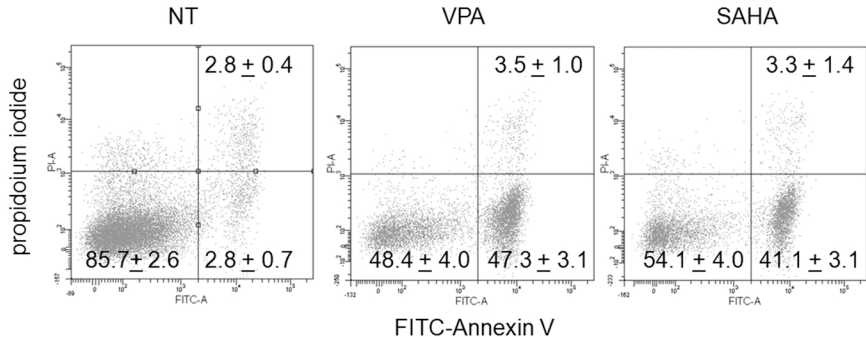
**Time- and residue-specific differences in histone  
acetylation induced by VPA and SAHA in AML1/ETO  
positive leukemia cells**

**2013; 8(2)**

**<http://dx.doi.org/10.4161/epi.23538>**

**[http://www.landesbioscience.com/journals/epigenetics/  
article/23538/](http://www.landesbioscience.com/journals/epigenetics/article/23538/)**

**Figure S1**



**Figure S1.** Dot plots of Kasumi-1 cells subjected to the Annexin V test. Cells were incubated in the absence (NT) or the presence of 2 mM VPA or 1 mM SAHA for 24 hours and annexin V test was performed. Dot plots are from one out of three independent experiments. Values are means  $\pm$  S.E.M. of the percentages of cells obtained from three independent experiments. The same data are shown in Fig 6B.