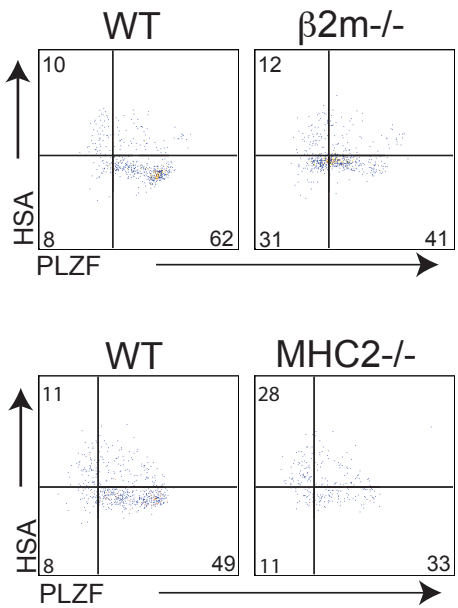
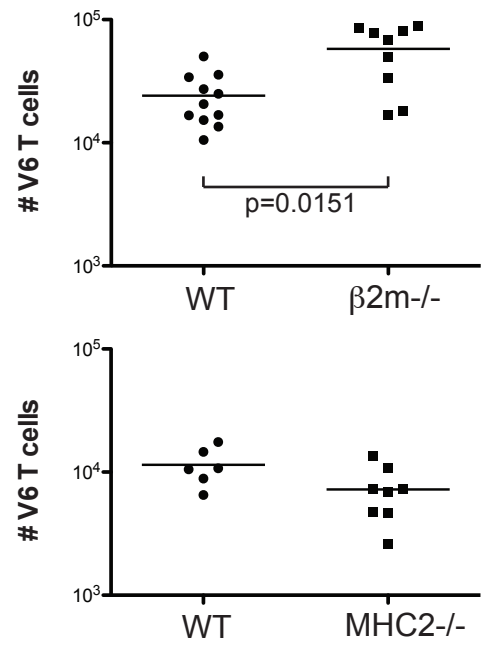


A**B**

Supplemental Figure 2. Neither $\beta 2m$ -dependent MHC class I molecules nor MHC class II molecules are not required for the development of V6 cells. (A) Thymocytes from WT, $\beta 2m^{-/-}$ and MHC2^{-/-} V6 cells were examined for HSA versus PLZF expression. Dot-plots show representative data. (B) Graphs show a compilation of total thymic V6 cells in WT, $\beta 2m^{-/-}$ and MHC2^{-/-} mice. Statistically significant differences are shown with p values. Data are representative of at least 2 independent experiments.