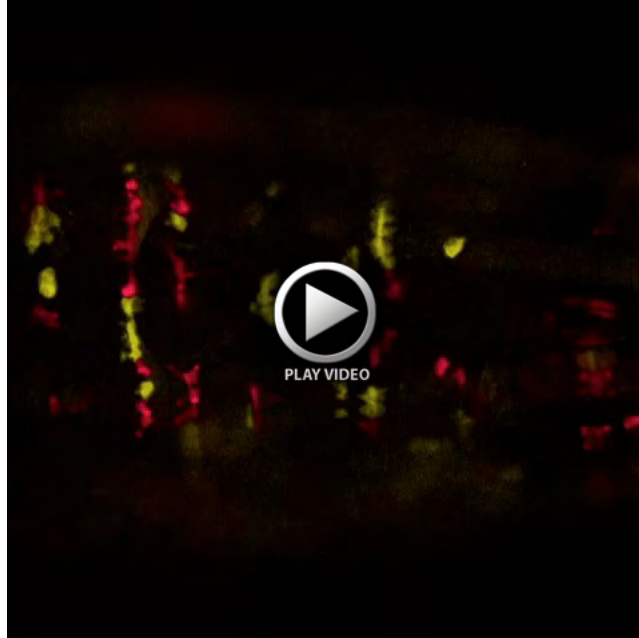


**Movie 1. A crawling first instar larva exhibits rapid translocation and cell shape change of individual tendon cells, as visualized using the GAL424B driver.** The total time-lapse movie duration is 30 seconds.



**Movie 2. Lollibow clones reveal the presence of many active filopodia in pupal wing epithelial cells.** Imaging conditions were optimized to minimize light exposure and damage. Pupae were staged by morphological criteria to between 30 and 50 hours after puparium formation. Frames were taken at 30 second intervals. Cell diameters are 6-8 um at this plane of focus.