

Suppressor Analysis of Temperature-Sensitive Mutations of the Largest Subunit of RNA Polymerase I in *Saccharomyces cerevisiae*: a Suppressor Gene Encodes the Second-Largest Subunit of RNA Polymerase I

RYOJI YANO AND MASAYASU NOMURA*

Department of Biological Chemistry, University of California, Irvine, California 92717

Received 29 August 1990/Accepted 2 November 1990

The *SRP3-1* mutation is an allele-specific suppressor of temperature-sensitive mutations in the largest subunit (A190) of RNA polymerase I from *Saccharomyces cerevisiae*. Two mutations known to be suppressed by *SRP3-1* are in the putative zinc-binding domain of A190. We have cloned the *SRP3* gene by using its suppressor activity and determined its complete nucleotide sequence. We conclude from the following evidence that the *SRP3* gene encodes the second-largest subunit (A135) of RNA polymerase I. First, the deduced amino acid sequence of the gene product contains several regions with high homology to the corresponding regions of the second-largest subunits of RNA polymerases of various origins, including those of RNA polymerase II and III from *S. cerevisiae*. Second, the deduced amino acid sequence contains known amino acid sequences of two tryptic peptides from the A135 subunit of RNA polymerase I purified from *S. cerevisiae*. Finally, a strain was constructed in which transcription of the *SRP3* gene was controlled by the inducible *GAL7* promoter. When this strain, which can grow on galactose but not on glucose, was shifted from galactose medium to glucose medium, a large decrease in the cellular concentration of A135 was observed by Western blot analysis. We have also identified the specific amino acid alteration responsible for suppression by *SRP3-1* and found that it is located within the putative zinc-binding domain conserved among the second-largest subunits of eucaryotic RNA polymerases. From these results, it is suggested that this putative zinc-binding domain is in physical proximity to and interacts with the putative zinc-binding domain of the A190 subunit.

Each of the three nuclear eucaryotic RNA polymerases, RNA polymerases I, II, and III (or A, B, and C), is a complex, multisubunit enzyme consisting of 9 to 14 polypeptide subunits (for a review, see reference 35). In contrast, procaryotic RNA polymerases have a more simple structure consisting of three core subunits (β' , β , and α) and a specific initiation factor (σ). The intricate structure of the eucaryotic enzymes may reflect the complex requirements for their biosynthesis (including transport to the nucleus or nucleolus), as well as the regulation of their transcriptional activities.

Despite this difference in subunit complexity, significant structural and functional similarity exists between the procaryotic and eucaryotic polymerases. In particular, the three procaryotic core subunits appear to have homologs among subunits of eucaryotic enzymes. Significant amino acid sequence homology was found between the *Escherichia coli* β' subunit and the largest subunits of eucaryotic RNA polymerase I (15, 25, 38, 46), II (2, 19, 39), and III (2, 38), based on sequence studies of the cloned genes encoding these subunit proteins from *Saccharomyces cerevisiae*, *Schizosaccharomyces pombe*, *Trypanosoma brucei*, and *Drosophila melanogaster*. The genes for the second-largest subunit of eucaryotic RNA polymerase II were also cloned from *S. cerevisiae* (40, 47) and *D. melanogaster* (11), and extensive amino acid sequence homology to the *E. coli* β subunit was demonstrated (11, 40). Since immunological studies of yeast RNA polymerases had indicated structural similarities among the second-largest subunits of RNA polymerases I, II, and III as well as among their largest

subunits (16), the second-largest subunits of RNA polymerases I and III are also expected to have homology to the *E. coli* β subunit. This expectation was recently confirmed for RNA polymerase III by James et al., who have cloned and sequenced the gene for the second-largest subunit of the polymerase from *S. cerevisiae* (16a). Finally, from limited amino acid sequence similarity, the third-largest subunit (RPB3) of *S. cerevisiae* RNA polymerase II has been suggested to be a homolog of the *E. coli* RNA polymerase α subunit (24, 45). On the basis of the comparison between the eucaryotic and procaryotic enzymes, it is expected that the major catalytic functions of the eucaryotic enzyme involve only a few of its many polypeptide subunits (see, e.g., the discussion on RNA polymerase II in references 40 and 45). Specifically, on the basis of extensive studies of the *E. coli* enzyme (for reviews, see references 9 and 48) and limited studies of eucaryotic polymerases (see, e.g., reference 31), it is almost certain that the two large subunits, the homologs of the β' and β subunits, play the major role in the catalytic function of these polymerases, including binding to DNA templates, substrate binding, polymerization activity, and termination.

To study RNA polymerase I and its role in the regulation of rRNA synthesis, we have taken a genetic approach with *S. cerevisiae* as an experimental organism (24a, 43). Starting with temperature-sensitive *rpa190* mutants of *S. cerevisiae* carrying mutations in the gene (*RPA190*) for the largest subunit (A190) of RNA polymerase I (43), we have isolated extragenic suppressors (*SRP*) of these mutations (24a). In this paper, we describe the cloning and characterization of one of these suppressors, *SRP3*. We have found that the suppressor gene is a mutated form of the gene encoding the

* Corresponding author.

TABLE 1. Strains and plasmids used in this study

Yeast strain or plasmid	Description
Strains	
NOY259.....	<i>MATα</i> <i>rpa190-1 ura3-52 his4-Δ401 leu2-3,112 trp1-Δ1</i>
NOY260.....	<i>MATα</i> <i>RPA190 ura3-52 his4-Δ401 leu2-3,112 trp1-Δ1</i>
NOY265.....	<i>MATα</i> <i>rpa190-3 ura3-52 his4-Δ401 leu2-3,112 trp1-Δ1</i>
NOY267.....	<i>MATα</i> <i>rpa190-5 ura3-52 his4-Δ401 leu2-3,112 trp1-Δ1</i>
NOY345.....	<i>MATα</i> <i>rpa190-5 ura3-52 SRP3-1</i>
NOY397.....	<i>MATα/MATα</i> <i>ade2-1/ade2-1 ura3-1/ura3-1 his3-11/his3-11 trp1-1/trp1-1 leu2-3,112/leu2-3,112 can1-100/can1-100</i>
NOY398.....	<i>MATα/MATα</i> <i>ade2-1/ade2-1 ura3-1/ura3-1 his3-11/his3-11 trp1-1/trp1-1 leu2-3,112/leu2,3,112 can1-100/can1-100 rpa135::LEU2/RPA135</i>
NOY399.....	<i>MATα</i> <i>ade2-1 ura3-1 his3-11 trp1-1 can1-100 leu2-3,112 rpa135::LEU2 pNOY83 (pGAL7-RPA135 URA3)</i>
NOY400.....	<i>MATα</i> <i>ade2-1 ura3-1 his3-11 trp1-1 can1-100 leu2-3,112 rpa135::LEU2 pNOY80 (RPA135 URA3)</i>
w303-1a.....	<i>MATα</i> <i>ade2-1 ura3-1 his3-11 trp1-1 leu2-3,112 can1-100</i>
Plasmids	
YCp50.....	<i>E. coli</i> -yeast shuttle vector carrying <i>URA3</i> (32)
pRS316.....	<i>E. coli</i> -yeast shuttle vector carrying <i>URA3</i> and with the multicloning site from pBluescript KS(-) (37)
pNOY79.....	Derivative of YCp50 carrying <i>SRP3-1</i> on a cloned DNA fragment of about 9 kb derived from a partial <i>Sau3A1</i> digest of NOY345 DNA
pNOY80.....	Derivative of pRS316 carrying <i>srp3⁺</i> (<i>RPA135</i>) on a DNA fragment of about 7 kb (Fig. 4A)
pNOY83.....	Derivative of pRS316 carrying the <i>pGAL7-RPA135</i> fusion gene (Fig. 4B)
pNOY86.....	Derivative of pRS316 carrying the 1.8-kb <i>EcoRI-XhoI</i> fragment which is upstream from <i>RPA135</i> and the ca. 0.7-kb <i>NsiI-EcoRV</i> fragment which is downstream from <i>RPA135</i> (Fig. 1C; see Materials and Methods)

second-largest subunit (A135) of RNA polymerase I. As expected, we found significant homology between A135 and the β subunit of *E. coli* RNA polymerase, as well as the second-largest subunits of eucaryotic RNA polymerases II and III. We have also identified the mutational alteration responsible for suppression of the *rpa190* mutations. The alteration was found to be in a putative zinc-binding domain close to the carboxyl terminus of the protein. This result suggests that in the holoenzyme this region of the A135 subunit is physically close to the site of the original *rpa190* mutations, which are also in a putative zinc-binding domain of the A190 subunit.

MATERIALS AND METHODS

Strains and plasmids. The strains used in this study are listed in Table 1. Three temperature-sensitive strains, NOY259 (*rpa190-1*), NOY265 (*rpa190-3*), and NOY267 (*rpa190-5*), as well as their isogenic control strain, NOY260 (*RPA190*), were described previously (43). Diploid strain NOY397 was constructed from w303-1a (obtained from Rolf Sternglanz [5]) by transformation with plasmid 43A (*HO LEU2*) (13). The diploidy of *Leu⁺* transformants was confirmed by their inability to mate as well as by their ability to sporulate. One of these diploid transformants was grown in the presence of leucine, and a *Leu⁻* segregant which lost the plasmid was retained (NOY397).

NOY398 is a derivative of NOY397 in which one of the *srp3⁺* (*RPA135*) genes has been disrupted by a *LEU2* insertion (Fig. 1B). This disruption was carried out as follows. The *BglII-BglIII* 2.7-kb fragment of *LEU2* prepared from YEp13 (6) was ligated into the *BamHI* site of plasmid pUC19. The resultant plasmid was digested by *XhoI*, treated with the DNA polymerase Klenow fragment, and religated, abolishing the *XhoI* site present in the cloned fragment. The *PstI-SmaI* fragment containing the *LEU2* gene was then cut out and used for disruption. The *XhoI-EcoRV* 5-kb fragment of *RPA135* was first cloned into pBluescript II KS(-) (Stratagene, La Jolla, Calif.) by using the *XhoI* and *SmaI* sites of this vector. The *PstI-NruI* fragment in *RPA135* on this plasmid was then replaced by the *PstI-SmaI* fragment containing *LEU2*. Finally, the *XhoI-BamHI* fragment which

carries the disrupted *RPA135* was cut out and introduced into NOY397, and *Leu⁺* transformants were selected, yielding NOY398.

NOY399 is a strain in which the transcription of *RPA135* is under the control of the *GAL7* promoter. To construct this strain, the *HindIII-BglIII* 0.6-kb fragment including the *GAL7* promoter region (from -274 to +3) was cut out from pAA7 (1) and cloned into pUC19 by using the *HindIII* and *BamHI* sites. The *HindIII-SmaI* fragment containing the *GAL7* promoter was then cut out and inserted into pRS316 by using the *HindIII* and *SmaI* sites of this vector. The resultant plasmid was then cut with *SmaI* and *SacI*, and the 4.6-kb *PvuII-SacI* fragment carrying the *RPA135* coding region prepared from pNOY80 was inserted into this gap, completing the fusion of *RPA135* to the *GAL7* promoter (see Fig. 4B). The plasmid constructed in this way was named pNOY83. Strain NOY399 was then constructed by transformation of NOY398 with pNOY83 followed by sporulation and tetrad dissection. A *Leu⁺* segregant was retained, and its dependence on galactose for growth was confirmed. NOY400 was constructed in a similar way from NOY398 by using pNOY80 instead of pNOY83.

Media. YEPD and synthetic dextrose (glucose) medium (SD) were described previously (36, 43).

Cloning. Genomic DNA was isolated from NOY345 as described by Johnston (17). Purified DNA (200 μ g) was partially digested by *Sau3A1* and fractionated in an 11-ml linear NaCl gradient (5 to 25% NaCl in 3 mM EDTA [pH 8.0]). After centrifugation for 4 h at 37,000 rpm in a SW40TI Beckman rotor at 22°C, fractions containing DNA fragments of about 5 to 15 kb in size were pooled, and the recovered DNA was ligated into the *BamHI* site of YCp50. These plasmids were transformed into *E. coli* DH5 (Bethesda Research Laboratories, Gaithersburg, Md.), and plasmid DNA was prepared from the pooled transformants. Plasmid DNA was then introduced into NOY267 (*rpa190-5*), and temperature-resistant (*Ts⁺*) transformants were selected on plates (SD containing 0.5% Casamino Acids and 40 μ g of tryptophan per ml) after incubation for 4 to 5 days at 37°C. Plasmids isolated from these transformants were introduced into NOY267, and the *Ts⁺* phenotype was confirmed.

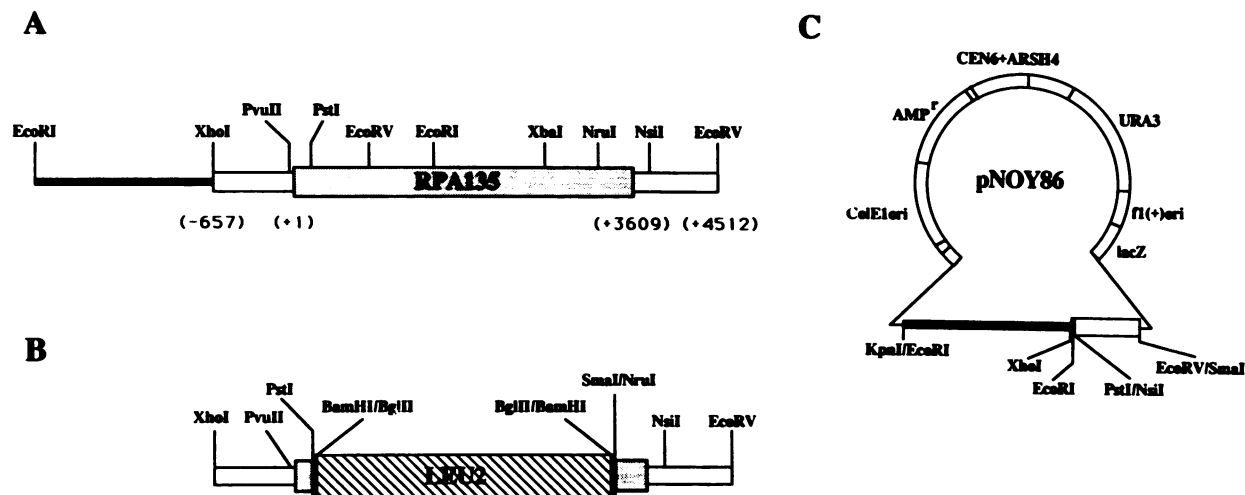


FIG. 1. Restriction enzyme map of the *RPA135* (*SRP3*) region and structures of DNA fragments derived from this region. (A) Diagram of the chromosomal segment of yeast DNA containing the *RPA135* (*SRP3*) gene. Nucleotide numbers given in parentheses correspond to those in Fig. 2. The protein-coding region (+1 to +3609) is shown as a stippled box. (B) DNA fragment used for construction of the null allele (*SRP3::LEU2* or *rpa135::LEU2*). (C) Structure of plasmid pNOY86 used for cloning of the wild type allele (*srp3*⁺) of *SRP3*. Note that the plasmid carries the upstream (*EcoRI-XhoI*) and the downstream (*NsiI-EcoRV*) segments flanking the *RPA135* (*SRP3*) coding region shown in panel (A), but does not carry the central part containing *RPA135* (*SRP3*).

The wild-type *srp3*⁺ (*RPA135*) gene was cloned by a gap repair method. The 1.8-kb *EcoRI-XhoI* fragment which is upstream of *RPA135* and the 685-bp *NsiI-EcoRV* downstream fragment (Fig. 1A) were inserted into the multiple cloning site of pRS316 by using *KpnI* and *XhoI* sites for the former and *PstI* and *SmaI* sites for the latter (Fig. 1C). The resultant plasmid (pNOY86) was cleaved at *XhoI* and *EcoRI* sites and transformed into NOY260 to repair the gap between *XhoI* and *NsiI* by copying the chromosomal *RPA135* region.

Sequencing. Several DNA fragments (1 to 3 kb) were first subcloned from the 5-kb *XhoI-EcoRV* fragment of the cloned *SRP3* gene into M13mp18 and/or M13mp19. Several series of deletion subclones were then constructed by using the CYCLONE I BIOSYSTEM (IBI, New Haven, Conn.), and their DNA sequences were determined by the dideoxy method with T7 DNA polymerase (41). The 1-kb *XbaI-NsiI* fragment of the wild-type gene was cloned into M13mp18 and M13mp19 and sequenced in the same way.

Mapping. Analysis of chromosomal DNA from NOY260 by orthogonal field alternation gel electrophoresis (OFAGE) were carried out as described by Carle and Olson (7). After electrophoresis, chromosomal DNA was blotted onto a nitrocellulose membrane (BA85; Schleicher & Schuell, Keene, N.H.) and hybridized with [³²P]DNA probes containing genes including *RPA135*, *RPA190*, *URA3*, *GAL4*, and *GAL80*. Uniformly labeled DNA probes were synthesized by using random oligonucleotide primers by the method of Feinberg and Vogelstein (12). The templates used were the 1.6-kb *XhoI-EcoRV* fragment containing part of *RPA135* (Fig. 1A), the 1.8-kb *XbaI-XbaI* fragment containing part of *RPA190* (25), the 1.2-kb *HindIII-HindIII* fragment containing *URA3* prepared from YEp24 (4), the 3.2-kb *HindIII-BamHI* fragment containing *GAL4* (14), and the 2.3-kb *HindIII-SmaI* fragment containing *GAL80* (28).

Primer extension analysis. Start sites for *RPA135* mRNA transcripts were determined by a primer extension method. mRNA was isolated from NOY260 as described by Carlson

and Botstein (8). Poly(A)⁺ RNA was prepared on an oligo(dT)-cellulose column and used for primer extension analysis. The sequence of the oligonucleotide primer used is TTAATCACTTTGCTCATCTCACCAAATGCG, which is complementary to the mRNA sequence covering the translation initiation site. The primer extension reactions were carried out as described in reference 33, and the products were analyzed by electrophoresis through a 6% polyacrylamide-8 M urea sequencing gel followed by autoradiography.

Immunoblot analysis. Samples containing 60 μg of total protein were subjected to sodium dodecyl sulfate (SDS)-polyacrylamide gel electrophoresis and then transferred to a BA85 nitrocellulose membrane. Antibody against the A135 subunit was provided by M. Riva and A. Sentenac, and bound antibody was visualized by using an immunoassay kit (Bio-Rad Laboratories, Richmond, Calif.) as described previously (24a, 44).

Nucleotide sequence accession number. The sequence of *RPA135* (see Fig. 2) has been submitted to the GenBank data base under accession number M3605.

RESULTS

Cloning of the *SRP3* gene. As described in the preceding paper (24a), strains carrying the *rpa190-5* (or *rpa190-1*) mutation fail to grow at 37°C. The presence of a suppressor mutation, *SRP3*, enables these strains to grow at 37°C. We used DNA from NOY345 (*rpa190-5 SRP3-1*) to clone the *SRP3* gene. A gene bank was prepared from this strain as described in Materials and Methods and was used to transform a temperature-sensitive strain, NOY267 (*rpa190-5*). Candidates were then selected from among transformants by their ability to form colonies at 37°C. Plasmids were isolated from each of 25 candidates, and physical structures of the cloned fragments were analyzed by digestion with several restriction enzymes. A DNA segment of about 9 kb was found to be shared by all of them. After further subcloning,

we found that the 5-kb *XhoI-EcoRV* fragment (Fig. 1A) was sufficient to suppress the *rpa190-5* mutation.

The plasmid carrying this 5-kb *XhoI-EcoRV* fragment was introduced into two other temperature-sensitive *rpa190* mutants, NOY259, which carries *rpa190-1*, and NOY265, which carries *rpa190-3*. Suppression was observed for the former, but not the latter. Thus, the allele specificity of suppression by the cloned gene is the same as that observed for *SRP3-1* in the original genetic experiments (24a), suggesting that the cloned gene on the 5-kb *XhoI-EcoRV* fragment is in fact the suppressor *SRP3*.

Nucleotide sequence of the *SRP3* gene. The nucleotide sequence of the *XhoI-EcoRV* fragment was determined as described in Materials and Methods, and the sequence is shown in Fig. 2. (The nucleotide sequence shown in Fig. 2 is actually the wild-type sequence [see the legend to Fig. 2 and below for the mutational alteration of the sequence].) The longest open reading frame found is 3,609 bp and would code for a protein of 1,203 amino acids with a calculated molecular mass of 136 kDa.

The deduced amino acid sequence of the open reading frame was compared with sequences in the GenBank and EMBL DNA data base by using a University of Wisconsin Genetics Computer Group computer program, TFASTA (30). Highly significant homology was found between the deduced amino acid sequence and the sequences of the second-largest subunits of RNA polymerases of various origins including RNA polymerase II from *S. cerevisiae* and *E. coli* RNA polymerase (Fig. 3A and C). The gene (*RPD2*) for the second-largest subunit of *S. cerevisiae* RNA polymerase II was previously cloned by Young and co-workers (40, 47), and the presence of about 10 regions showing highly significant amino acid sequence homology to the *E. coli* RNA polymerase β subunit was recognized in this RNA polymerase II subunit (40). Most of these regions also show homology to the deduced amino acid sequence of the cloned *SRP3* gene. These observations, combined with the ability of this gene to suppress the *rpa190-1* (and *rpa190-5*) mutation, strongly suggested that the protein encoded by this open reading frame is the second-largest subunit (called A135 by Sentenac and co-workers; see reference 35) of RNA polymerase I. This inference was supported by comparison of the deduced amino acid sequence of the protein encoded by the cloned *SRP3* gene with two peptide sequences supplied by M. Riva, C. Carles, and A. Sentenac (30a). These workers determined amino-terminal sequences of two tryptic peptides derived from the A135 subunit of purified *S. cerevisiae* RNA polymerase I. These sequences are AGAL?GIAQD STP?IFNED and AGYNY?GNEPMYSGATGE (where ? indicates unidentified amino acid residues). We find that the first sequence starts at deduced amino acid position 971 (through 989) and is preceded by lysine 970, and the second sequence starts at position 1003 (through 1020) and is preceded by lysine 1002. No discrepancy was observed between their peptide sequences and our deduced amino acid sequence. The experiments described below give further and more direct evidence for the conclusion that the *SRP3* gene represents a mutated form of the gene coding for the A135 subunit of RNA polymerase I.

Cloning of the wild-type allele of the *SRP3* gene and identification of the mutational alteration. If the cloned gene encoding A135 is in fact the *SRP3* gene, we should be able to find a difference in the nucleotide sequence (causing a difference in the amino acid sequence) between the cloned gene and the corresponding gene (*srp3*⁺) in strains which do not carry the suppressor gene *SRP3*. We cloned the gene

from NOY260 (*RPA190 srp3*⁺) by using a gap repair method. A linear DNA lacking the A135 coding region but retaining its flanking sequences was prepared starting from plasmid pNOY86 (see Fig. 1C and its legend) and introduced into strain NOY260 by transformation. Ura⁺ transformants were selected, and a plasmid containing the A135 region (pNOY80) was recovered. In contrast to the original plasmid (pNOY79), the plasmid (pNOY80) recovered from NOY260 did not have the ability to suppress the *rpa190-5* mutation, indicating that the repaired segment contains the wild-type sequence and is different from that derived from the *SRP3* strain.

To identify the location of the *SRP3* mutation, a series of chimeric genes was constructed from the wild-type and mutant genes and introduced into NOY267 as pRS316-derived plasmids. We examined their ability to suppress the *rpa190-5* mutation and found that the mutation responsible for suppression is within the 1-kb *XbaI-NsiI* fragment (Fig. 1A). The nucleotide sequence of this fragment derived from the wild-type gene was then determined. Comparison of this sequence with the sequence of the mutant gene demonstrated that the *SRP3-1* mutation represents a cysteine 1127-to-arginine change which is caused by base substitution of C for T at nucleotide 4037 (Fig. 2; see also Fig. 7B). As discussed below, this mutational alteration is within the putative zinc-binding region (with the CX₂CX_nCX₂C motif) near the carboxy-terminal end of the protein, which is apparently conserved among the second-largest subunits of RNA polymerase II and III analyzed so far.

Chromosomal location and the transcription start site of the *SRP3* gene. Intact chromosomal DNAs from NOY260 were separated by orthogonal field alternation gel electrophoresis and transferred to a nitrocellulose membrane, and the *SRP3* gene was localized by using the 1.6-kb *XhoI-EcoRV* fragment (Fig. 1A) as a radioactive probe. Hybridization results demonstrated that the gene is on chromosome XVI (data not shown). Identification of the chromosome was confirmed by parallel hybridization of the gels by using a probe for the *GAL4* gene, which is known to be on chromosome XVI, as well as several other probes for genes of known chromosomal locations. Thus, the chromosomal location of the *SRP3* gene is different from that of *RPA190*, which is localized on chromosome XV (24a).

The transcription start site was determined by primer extension with a radioactive oligonucleotide corresponding to nucleotide positions -13 to +17 in Fig. 2. The results indicated that transcription most probably starts at the A, 57 nucleotides upstream from the AUG translation initiation codon (data not shown). We note that there are no obvious sequences corresponding to the consensus TATA box element (TATATAA or TATAAA) in the region upstream from the coding region that we have sequenced. Failure to recognize the TATA box element was also encountered for several other yeast genes including *RPA190* (25).

Disruption of the chromosomal *SRP3* gene and construction of a conditional expression system. Using a diploid strain, NOY397, we first deleted most of the coding region in one of the two copies of the *srp3*⁺ gene. Disruption was carried out with the *LEU2* fragment as described in Materials and Methods. The resultant strain (NOY398 [Table 1; Fig. 1B]) was sporulated, and 11 tetrads were dissected. The spore viability and leucine requirements of viable spores were examined.

None of the tetrads produced more than two viable spores, and all the viable spores were leucine auxotrophs (Leu⁻) (Table 2). Most of the control tetrads obtained from

-600 -540

CTCGAGGCAARTCAGTTTCARTGACGATAGAGGTAGCAAATTACTATATTAGTGAATAGTAAACGGAGACAAAGATTGTTTACGGCTCTTTGTAGTCATCCTGCTGTTGTTT

-480 -420

TTGTATGTTTAAAGCTTCTCCTCCGATTAGTTTTGTACATTTACTTCTGTAGTTAAGGGCTCTTTTCTCATTATATTTCAARTGCTAARTCATGCCATGAAACTTCAAAAAGCAT

-360 -300

CAARTGAGGAGAGCGCTGATGCATCGAGTGAARATTTATCATAACTCAGCATGAGTGTATATCTACAGAGCAGACATGCTACAGAGTTCAAGCACTTARTGGCATTTCTA

-240 -180

ATAGATTCTCAGCGCCCTTTGAGTCTCGACTACCCTTATTATCATACCCAGAGCGCCTCTCGGCCCTCCTCATGCTATARTCGCTARTGCGGAATTTATTGAGATTAC

-120 -60

TCTTGCAGTGTTTTTTTTTTTTTTTTTTTTTTCGTATGAAAATTTTCAAGCCCATCTAGAGACTCATCTCATCTTATTATTCAACTTACTTCAAGTGTCTCGTAAATTC

-1 PvuII

AGCAAGTCTTCTCAGAAATTTGCAAAATAACGTAGATTACGCATTTGGTGAG

	10	30	50	70	90	110
	ATGAGCAAGTGTATTAGCCGCTGGCCAGCCAGCAACTGCTGATTTCCGTACCTTAGA	CGTGAATCTAGGTTTCATCAATCCACCTAAGGATAAATCAGCATTCCACTATTACAGGAA				
1	M S K U I K P P G Q A R T A D F A T L E A E S R A F I N P P K D K S A F P L L Q E					
	130	150	170	190	210	230
	GCTGTTCAACCTCATATTGGGCTTTTAAACGCATTAAACAGAGGTCGGATGGAGGTTG	TAAATCTGGTGTAAAGACATCGGTGAAAAGTTATATTGATGAAAACCACTCAAT				
41	A U Q P H I G S F N A L T E G P D G G L L N L G U K D I G E K U I F D G K P L N					
	250	270	290	310	330	350
	TCTGAAGACGAATATCCACAGCGGATACCTCGGGAATAGCTTTCTGTAGTGGAA	CAAGTGTCTATTGCGAGCCAAATGCTAAGCATGGTGTCTTCTGACAGTAGAGAGAAA				
81	S E D E I S N S G Y L G N K L S U S U E Q U S I A K P M S N D G U S S A U E R K					
	370	390	410	430	450	470
	GTTTACCAGTGAGTCAGACAAAGGCTTACTTCTACAGAGGTAATTTTAAAG	TGAGTGGTCCGTAACATGGCAGGAGACTTATTGAGTAAGAGATTGGTGGT				
121	U Y P S E S R Q R L T S Y R G K L L L K L K W S U N N G E E N L F E U R D C G G					
	490	510	530	550	570	590
	CTACCAGTTATGCTACAGAGTACAGATGCTACTTGAACAGATGTCACCATATGA	ACTGTCACACACAGGAGAAATCCGATGAATAGGTGGTATTTCATTGTTAACGGTATAGAA				
161	L P U M L Q S N A C H L N K M S P Y E L U Q H K E E S D E I G G Y F I U N G I E					
	610	630	650	670	690	710
	AAGCTTATTAGATGCTGATTGTGCACGCTAGAATCATCTATGGCTATCATCAG	ACCTTCCTTCCGTAACAGGGTGCATCCTATTCTCATTACGGTATCAATTAGATCTGCAGG				
201	K L I R M L I U Q A R N H P M A I I R P S F A N A G A S Y S H Y G I Q I A S U A					
	730	750	770	790	810	830
	CCGGTCAAACTTCCAAACTAATGTTTGCATTACTTAAATGACGGTCAAGTTACATTT	AGATTTCTTGGAGAAAATGAATATTAGTTCCTGTTGTTATGATTTTAAAGCCTTG				
241	P D Q T S Q T N U L H Y L N D G Q U T F A F S W A R K N E Y L U P U U M I L K A L					
	850	870	890	910	930	950
	TGTCATCCAGCGATAGGGAATTTTGTGATATTGTTGATGACGTTAAGGATTC	TTTTGACCGATCGTTAGAACTACTGTTACGTTGTTTTAAGAAAAGTATCCTCATTTA				
281	C H T S D R E I F D G I I G N D U K D S F L T D R A L E L L L R G F K K R Y P H L					
	970	990	1010	1030	1050	1070
	CAAAATCGCACACAGTCTTGCATATTTAGGAGACAATTTCTGTTGCTTTTCAAGCT	TCCCTGATCAATCTGATTTAGAGTGGCACAAGAGTCTTGCATCGATCGTCTCGTG				
321	Q N A T Q U L Q Y L G D K F A U V F Q A S P D Q S D L E U G Q E U L D R I U L U					
	1090	1110	1130	1150	1170	1190
	CATTTGGTAAAGGATGGCAGCCAGGATAATTCAGATGTTATTGTTTCATGATCAGA	AAAGTTGATTCCTGGTGCAGGGCAATGTTCTCCAGATACCCAGATGCTACGCACATCAA				
361	H L G K D G S Q D K F A M L L F M I R K L Y S L U A G E C S P D N P D A T Q H Q					
	1210	1230	1250	1270	1290	1310
	GAAAGTCTTTGGTGGTCTTATATGGTATGATCCTAAGAAAGATGATGAGTAC	TACAGAAATATTGCTCAGTCAGGATGGATTAACCGTGGATGGCCATTAATTTT				
401	E U L L G G F L Y G M I L K E K I D E Y L Q N I I A Q U A M D I N A G M A I N F					
	1330	1350	1370	1390	1410	1430
	AAAGACAARAGGTACATGTCAGAGTTTTARTGAGGTTAATGAARACATTTGTTCCAA	ATGCAATACTTTTATCAACTGGTAACCTGGTGTCCAGTCTGGGTTAGATTTACACAA				
441	K D K R Y M S A U L M A U N E N I G S K M Q Y F L S T G N L U S Q S G L D L Q Q					
	1450	1470	1490	1510	1530	1550
	GTTTCTGGTATACTGTGGTTCAGAAAATTAACCTTCTACCGTTTTATCTCATTTT	AGAATGGTTCATAGAGGCTCCTTTTGGCCAAATGAAAACCTCCACAGTCAGAAAGTTG				
481	U S G Y T U V A E K I N F Y R F I S H F A M U H A G S F F A Q L K T T T U A R K L					
	1570	1590	1610	1630	1650	1670
	CTACCTGAGTCTGGGGATTCCTGTGCCCTGTTATACACAGATGGTCTCCTTGTGGT	TTATTAACCAATTTTGGCACAAGTGTGATATCAACTCAGCAATCTGACGCTCAAGA				
521	L P E S W G F L C P U H T P D G S P C G L L N H F A H K C R I S T Q Q S D U S A					
	1690	1710	1730	1750	1770	1790
	ATTCTTCTATATTACTCACTGGTGTGCTCCGGCATCTCACACCTTGTGCTGGT	CCTTCTCTGTTGTTCAATTTGATGGTAAATATTGGTGGGCTCTCATGAACAA				
561	I P S I L Y S L G U A P A S H T F A A G P S L C C U Q I D G K I I G M U S H E Q					
	1810	1830	1850	1870	1890	1910
	GGTAAGATCATTGCGGATCATTGAGATTTGGAAGTTGAAGGCAGAGCGCTGGGTTA	CCGATTGATCTAGAATTTGGATATGTTCCCTCAACTCGTGGTCAATCCAGGCTCTC				
601	G K I I A D T L A Y W K V E G K T P G L P I D L E I G Y U P P S T A R G Q Y P G L					
	1930	1950	1970	1990	2010	2030
	TACCTATTGGTGGTCACTTAGGATGCTGCGTCCCTGTTACCTGCCCTTGGATAAA	GAGACATTTGGACCTTTGAGCAGTGTACATGAACATTGCTGTCACTCCTCAGAA				
641	Y L F G G H S R M L A P U R Y L P L D K E D I U G P F E Q U Y M N I A U T P Q E					
	2050	2070	2090	2110	2130	2150
	ATTCAAAATACGTTATACACACGTAAGATTTAGCCCAAAATATTCTTCTATTTTG	GCTAATTTGACTCCATTTCTGATTTCAACAGTCTCCAGAAACATGATCAATGTCAG				
681	I Q N H U H T H U E F T P T N I L S I L A M L T P F S D F N Q S P A N M Y Q C Q					

the diploid NOY397 produced four viable spores. These results demonstrate that one of the *srp3⁺* genes in NOY398 is disrupted by the *LEU2* insertion and that the *srp3⁺* gene is essential for cell viability.

To directly demonstrate that the cloned *SRP3* (and *srp3⁺*) gene codes for the A135 protein, we constructed a system in which expression of this gene is achieved entirely through a galactose-driven promoter, as was done for the *RPA190* gene

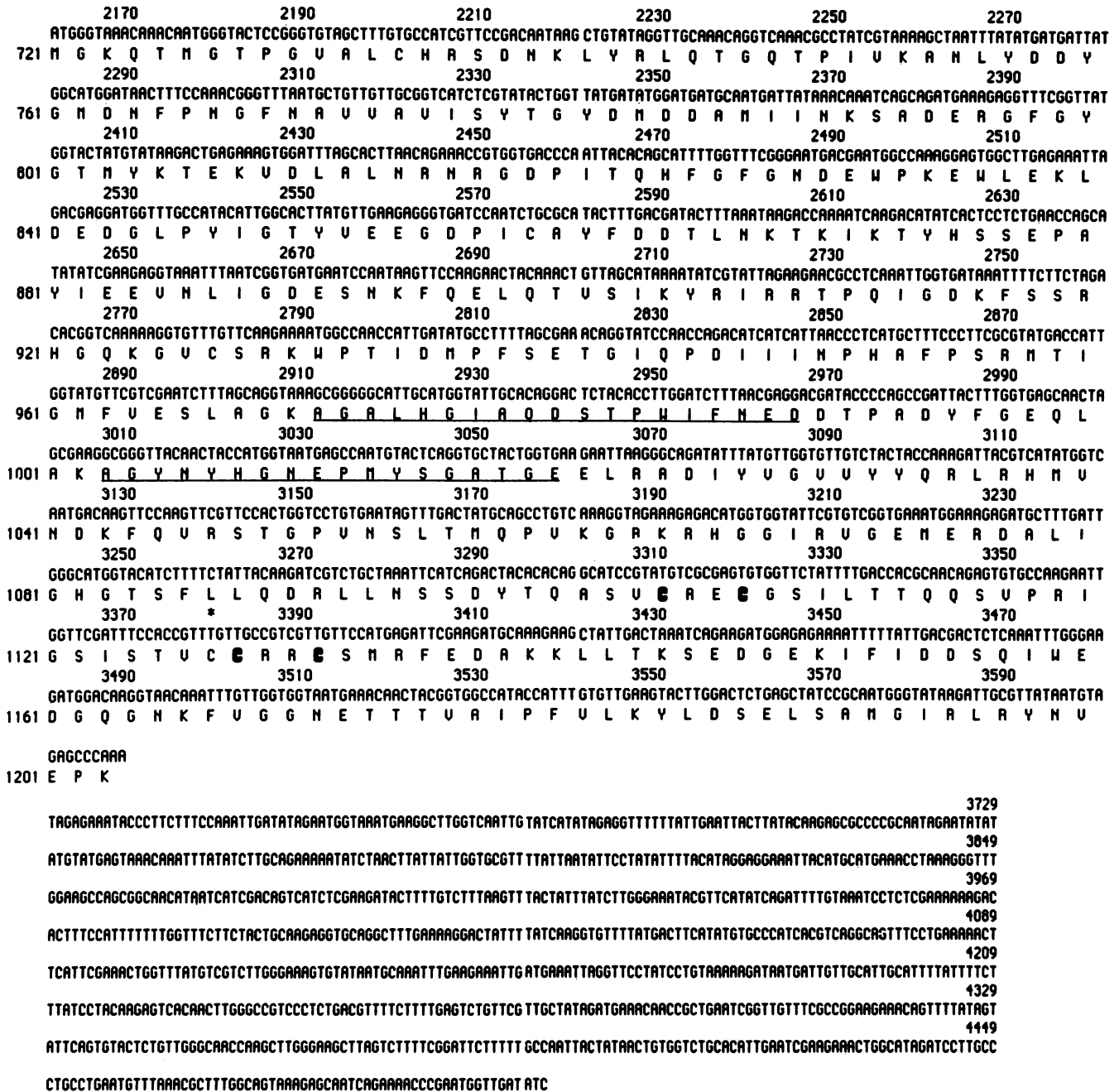


FIG. 2. Nucleotide and predicted amino acid sequences of *RPA135* (*srp3+*). The coding sequence starts at nucleotide 1 and ends at nucleotide 3609. Amino acid sequences corresponding to the peptide sequences determined by Sentenac and co-workers (30a) are underlined. The putative zinc-binding region with the motif $CX_2CX_nCX_2C$ is indicated by outlining C at each of the four cysteine residues (amino acid positions 1104, 1107, 1128, and 1131). The nucleotide (3379) altered in *SRP3-1* (T → C) is indicated by an asterisk, and the transcription start site (A at -57) is overlined. The *PvuII* site (-76 to -71) used for fusion to the *GAL7* promoter is also indicated.

in our previous work (44). A DNA fragment containing the *GAL7* promoter ("p*GAL7*") covering the region from -274 to +3 (with respect to the *GAL7* transcription start site) was fused to the *srp3+* gene at position -73 (16 bp upstream from the transcription start site of the *SRP3+* gene). This p*GAL7*-*srp3+* fusion gene was placed in centromere vector pRS316, and the resultant plasmid (pNOY83; Fig. 4) was introduced into the diploid strain NOY398, which has one of the *srp3+* genes deleted and replaced by *LEU2*. After sporulation,

tetrads were dissected on galactose plates and growth of segregants on glucose was examined. Two of the four segregants, which were Leu⁺, grew on galactose but failed to grow on glucose. The results confirm that the *srp3+* gene is an essential gene and demonstrate that the gene present on plasmid pNOY83 is in fact transcribed from the *GAL7* promoter. One of these galactose-dependent haploid segregants, NOY399, was used in the following experiments.

NOY399 was first grown in galactose medium to the

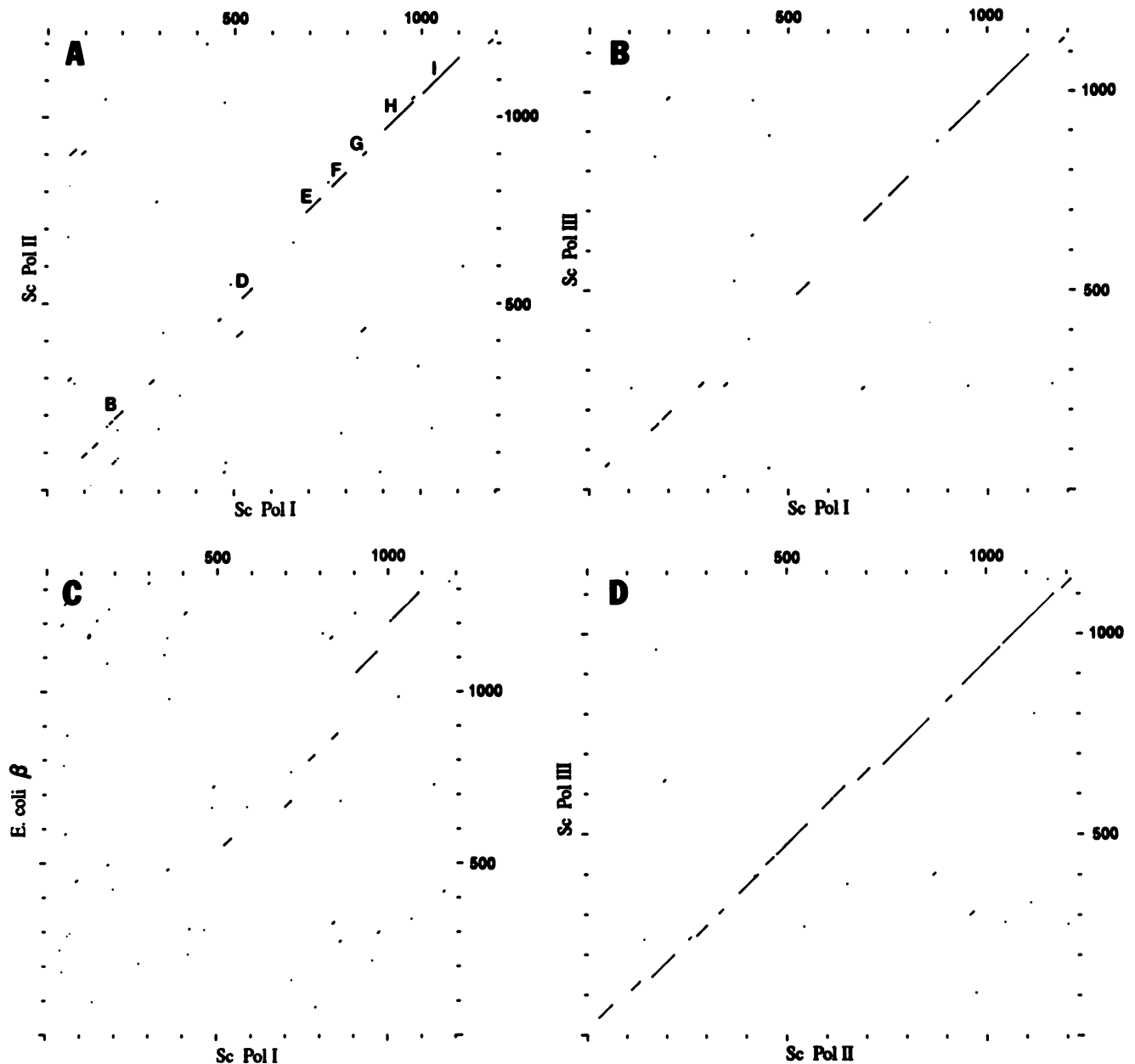


FIG. 3. Comparison of the amino acid sequences of the second-largest subunit of *S. cerevisiae* RNA polymerase I (A135), II (B150 or RPB2), and III (C130) and the *E. coli* RNA polymerase β subunit. A dot matrix analysis of amino acid sequence similarity is shown (University of Wisconsin Genetics Computer Group program COMPARE [10]; window, 25; stringency, 15). (A) A135 versus B150. (B) A135 versus C130. (C) A135 versus *E. coli* β . (D) B150 versus C130. The seven regions conserved among the second-largest subunits of RNA polymerases are indicated in panel A; they correspond to the regions B, D, E, F, G, H, and I found by Sweetser et al. in the comparison of B150 and the *E. coli* β subunit (40).

mid-log phase. The culture was divided into two parts. One part was transferred to glucose medium, and the other part was kept in galactose medium. Cell growth was monitored. The results are shown in Fig. 5. Upon transfer to glucose medium, the growth rate of NOY399 increased initially. After about 4 h, the growth rate started to decrease, and by 8 h after the shift the decrease became very significant, approaching cessation of cellular growth. In contrast, the control strain (NOY400) carrying *srp3*⁺ with its native promoter did not show such growth defects (Fig. 5). These

results show that although transcription of the *srp3*⁺ gene from the *GAL7* promoter is quickly repressed upon transfer (for a review, see reference 18), the effects on growth become manifested only gradually. This may be because preexisting RNA polymerase I continues to transcribe rRNA genes, and hence the synthesis of ribosomes also continues, to some extent, after the transfer. The situation is similar to that which we observed previously for cessation of transcription of the *RPA190* gene (44). (We note that although NOY399 grows in galactose medium and forms colonies on

TABLE 2. Tetrad analysis of diploid cells with a copy of the *RPA135* (*SRP3*) genes disrupted by *LEU2*

Disruption ^a	No. of tetrads with following no. of viable spores per tetrad:				No. of tetrads with following no. of Leu ⁺ spores per tetrad:		
	4	3	2	1	2	1	0
+	0	0	8	3	0	0	11
-	9	1	0	0	- ^b	-	-

^a +, Diploid strain NOY398 (*RPA135/rpa135::LEU2*); -, control diploid strain NOY397 (*RPA135/RPA135*).

^b NOY397 is *leu2/leu2*, and so the leucine phenotype was not analyzed.

galactose plates, its growth rate in galactose is lower than that of NOY400. We have not investigated the basis of this observation.)

We measured the amounts of A135 protein after transfer to glucose in this conditional expression system. The amounts of A135 were estimated by Western immunoblot analysis with a specific antiserum against A135 protein. The cellular concentration of A135 decreased with time and became roughly 10% of that of control at 8 h after the transfer (Fig. 6). These results, combined with those described above, directly demonstrate that the cloned *srp3*⁺ gene codes for the second-largest subunit (A135) of RNA polymerase I. Following the nomenclature adopted by Mémet et al. for other RNA polymerase I genes (25), we now call the gene *RPA135*.

DISCUSSION

Genes for the second-largest subunit of RNA polymerases were previously cloned and sequenced for RNA polymerase II from *S. cerevisiae* as well as that from *D. melanogaster*, and the presence of significant homology to the *E. coli* RNA polymerase β subunit was recognized in the deduced amino acid sequences (11, 40). In addition, James et al. (16a) have recently cloned and sequenced the gene for the second-

largest subunit (C130) of RNA polymerase III from *S. cerevisiae*, and we have now demonstrated that the gene we have cloned as a suppressor of *rpa190-1* (and *rpa190-5*) codes for the second-largest subunit (A135) of RNA polymerase I. Therefore, we can now compare amino acid sequences of the second-largest subunits in the three different types of RNA polymerases, i.e., RNA polymerases I, II, and III, from *S. cerevisiae*. The results of such an analysis are shown in Fig. 3. It can be seen that the subunits of polymerases II and III are more closely related to each other than to the corresponding subunit of polymerase I.

Amino acid sequences of the largest subunits (A190, B220, and C160) of the three forms of RNA polymerases from *S. cerevisiae* were previously compared by Mémet et al. (26), and the same relationship was observed; that is, B220 and C160 were found to have greater sequence similarity to each other than to A190. These authors have suggested the existence of a transient ancestor to eucaryotic RNA polymerases II and III. The present observations give further support to this suggestion.

RNA polymerases from eucaryotic as well as procaryotic organisms are zinc metalloenzymes (22). Although the exact stoichiometry of zinc has not been established, at least two zinc atoms are present per enzyme molecule (see, e.g., reference 3 for a discussion of yeast RNA polymerase I and reference 22 for a review). Consistent with these observations, previous studies on the sequences of the cloned genes revealed the presence of zinc-binding motifs in both the largest and the second-largest subunits of RNA polymerases. In the former case, the putative zinc-binding region is present near the amino terminus of the proteins and the consensus sequence is CX₂CX₆₋₁₂CX₂H (Fig. 7A). (Although the consensus zinc-binding motif in the largest subunit was previously thought to be CX₂CX₉₋₁₅HX₂H [21, 25, 43], CX₂CX₆₋₁₂CX₂H seems to be more likely in view of the sequences of trypanosome RNA polymerases I and II.) This motif is found in yeast RNA polymerases I, II, and III, other eucaryotic RNA polymerases, and *Halobacterium halobium* polymerase (i.e., an archaeobacterium polymerase), but only

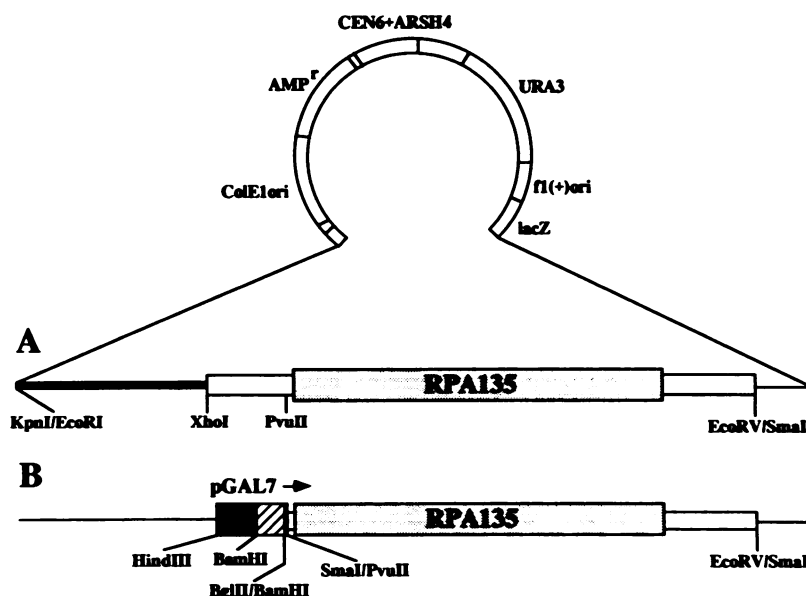


FIG. 4. Plasmids used for conditional expression of the *RPA135* (*SRP3*) gene. (A) Control plasmid pNOY80. (B) pNOY83 carrying the *RPA135* gene fused to the *GAL7* promoter. The portion of this plasmid derived from vector pRS316 is shown only in panel A.

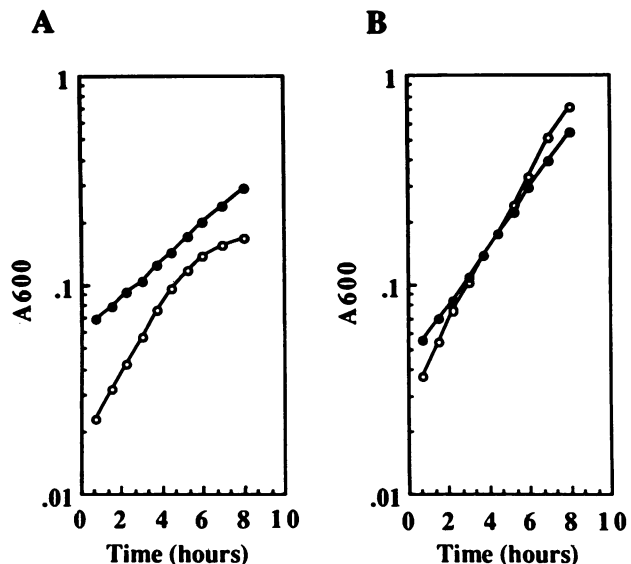


FIG. 5. Growth of NOY399 (A) and NOY400 (B). Cells were first grown in galactose medium. Portions were taken and resuspended in glucose medium (time zero), and growth was monitored by measuring the A_{600} of the cultures (○). The growth of portions maintained in galactose medium (●) was also monitored by measuring the A_{600} .

in an incomplete form in the *E. coli* polymerase β' subunit (21). The zinc-binding motif in the second-largest subunits was first found for yeast RNA polymerase II near the carboxyl terminus of the protein (40). Homologous sequences were subsequently found in the *S. cerevisiae* RNA polymerase III (16a), as well as in other RNA polymerases, including the *H. halobium* polymerase (21) but not the *E. coli* polymerase β subunit. We now find that *S. cerevisiae* RNA polymerase I also carries a similar sequence near the carboxyl terminus (Fig. 7B). Thus, all of the three forms of eucaryotic RNA polymerases, polymerases I, II, and III, possess this putative zinc-binding domain (CX₂CX₈₋₂₅CX₂C) in the second-largest subunit.

We have found that the mutational alteration in the *SRP3* gene responsible for suppression of *rpa190-5* (and *rpa190-1*) is located within the putative zinc-binding region (Fig. 7B). Both the *rpa190-5* and *rpa190-1* mutations, which can be suppressed by *SRP3*, are also located in the putative zinc-binding region of the largest subunit (A190) of the enzyme (43) (Fig. 7A). It should be noted that the *SRP3* suppressor fails to suppress other *rpa190* mutations, including *rpa190-3*, which is an amino acid substitution near the middle of A190

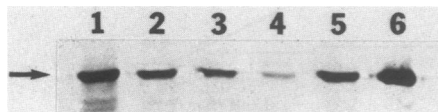


FIG. 6. Western immunoblot analysis of A135. Samples were prepared from NOY399 at various times after the shift from galactose to glucose medium (lanes 1 to 4 corresponding to 0, 2, 4, and 8 h, respectively, after shift). A control sample was prepared from NOY400 at 8 h after the shift from galactose to glucose (lane 5). Samples contained equal amounts of protein. Purified RNA polymerase I was also analyzed as a reference (lane 6) to indicate the position of A135 (arrow). A photograph of an alkaline phosphatase-stained filter is shown.

(43); that is, the suppressor is allele specific. Thus, the present results suggest that these two putative zinc-binding regions may interact during assembly and/or perhaps in the assembled enzyme and that this may be the basis for suppression by *SRP3*. In the preceding paper (24a), we have discussed evidence indicating that the putative zinc-binding domain in the A190 subunit functions to maintain a correct local conformation of the protein that is essential for proper interaction with another subunit during assembly and/or proper interaction with another subunit required for the stability of the enzyme. The present results support this conclusion.

Martin et al. (23) carried out suppressor analysis to obtain information on interactions between specific segments of the largest (B220 or RPB1) and the second-largest (B150 or RPB2) subunits of *S. cerevisiae* RNA polymerase II. They used two temperature-sensitive mutations, one located near the carboxyl terminus of B220 (in region H) and the other located near the carboxyl terminus of B150 (in region I). From the results of the suppressor analysis, they have suggested an interaction between region H of B220 and region I of B150. The sites in region I of B150 used in their experiments are separated from the putative zinc-binding consensus sequence of B150 by 17 to 37 amino acid residues (toward the amino terminus). Perhaps the simplest interpretation of their results and the present results is that both amino-terminal and carboxyl-terminal sequences of the largest subunit interact directly with a single region near the carboxyl terminus of the second-largest subunit. In addition, as also discussed by Martin et al. (23), there remains the possibility that the genetic suppression observed in our work as well as theirs is a consequence of indirect interaction of the two regions at a distance. Therefore, their results are not necessarily in conflict with ours.

Although we do not have direct evidence, we think that direct interaction of the two putative zinc-binding domains is an attractive hypothesis. In this regard, we note that a yeast killer plasmid carries an open reading frame, a presumed RNA polymerase gene, encoding a single 100-kDa polypeptide which has strong homology to several conserved regions in the two large subunits of eucaryotic as well as *E. coli* RNA polymerases (42). Inspection of the linear arrangement of these conserved regions suggests a physical proximity of the region near the carboxyl terminus of the second-largest subunit to the region near the amino terminus of the largest subunit in eucaryotic (as well as *E. coli*) RNA polymerases. In fact, on the basis of this information, Sawadogo and Sentenac (34) suggested that the two putative zinc-binding domains may be physically in close proximity, in agreement with our own suggestion based on the present work.

Analysis of extragenic suppressors of conditionally lethal mutations is a genetic approach to identification of protein components interacting with the protein encoded by a mutated gene. This method has been used in many systems including *S. cerevisiae* RNA polymerase II (23, 29) and *D. melanogaster* RNA polymerase II (27). Using this approach, we have identified the gene for A135 as a suppressor of mutations in the putative zinc-binding domain of A190. This result has confirmed our original expectation and encourages us to use the same approach to identify genes for other subunits of RNA polymerase I as well as additional components, such as specific transcription factors, involved in the transcription of rRNA genes.

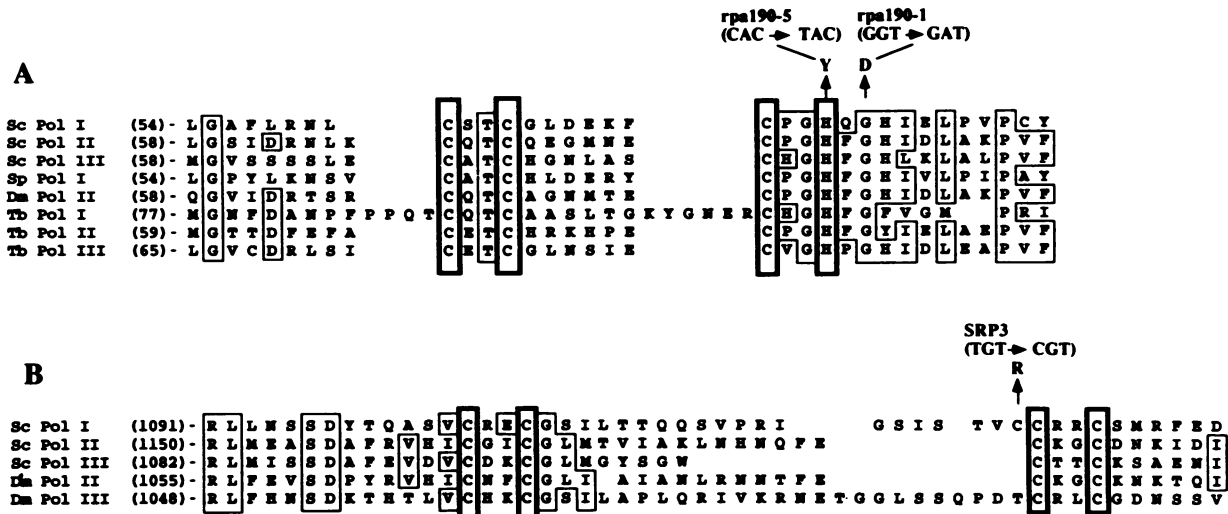


FIG. 7. Putative zinc-binding regions of the largest subunits (A) and the second-largest subunits (B) of several eucaryotic RNA polymerases. The amino acid alteration caused in A135 of *S. cerevisiae* by *SRP3-1*, as well as the amino acid alterations caused by two mutations (*rpa190-1* and *rpa190-5*), which can be suppressed by *SRP3-1*, are indicated. Consensus putative zinc-binding motifs CX₂CX₆₋₁₂CX₂H (in panel A) and CX₂CX₈₋₂₅CX₂C (in panel B) are indicated by boxes with thick lines. Other conserved residues (identical residues found in at least 60% of group members) are boxed with thin lines. The numbers in parentheses near the beginning of each sequence indicate the position in the sequence of the first amino acid shown. Abbreviations and references are as follows. (A), Sc (*S. cerevisiae*) Pol I (RNA polymerase I), reference 25; Sc Pol II (RNA polymerase II), reference 2; Sc Pol III (RNA polymerase III), reference 2; Sp (*S. pombe*) Pol I, references 15 and 46; Dm (*D. melanogaster*) Pol II, reference 19; Tb (*Trypanosoma brucei*) Pol I, reference 38; Tb Pol II, reference 39; Tb Pol III, reference 38. (B), Sc Pol I, this work; Sc Pol II, reference 40; Sc Pol III, reference 16a; Dm Pol II, reference 11; Dm Pol III, reference 20. It should be noted that the published sequence for the *D. melanogaster* polymerase III second-largest subunit is more similar to the *S. cerevisiae* polymerase I second-largest subunit than to the *S. cerevisiae* polymerase III second-largest subunit, and its identity has been questioned. This point has been discussed by James et al. (16a).

ACKNOWLEDGMENTS

We thank A. Sentenac and M. Riva for providing their unpublished results on amino acid sequences of two tryptic peptides of A135 and for antiserum against A135. We also thank P. Hieter for providing yeast plasmids, Y. Nogi for providing some yeast strains and plasmids as well as for technical advice, C. Greer and J. Keener for reading the manuscript, and A. S. Mackenzie for helping in the preparation of the manuscript.

This work was supported by Public Health Service grant R37GM35949 from the National Institutes of Health.

REFERENCES

1. Abe, A., T. Wada, H. Handa, Y. Nogi, and T. Fukasawa. 1988. Efficient usage of a galactose-inducible expression vector for the production of heterologous protein in yeast. *Agric. Biol. Chem.* 52:2035-2041.
2. Allison, L. A., M. Moyle, M. Shales, and C. J. Ingles. 1985. Extensive homology among the largest subunits of eucaryotic and prokaryotic RNA polymerases. *Cell* 42:599-610.
3. Auld, D. S., and I. Atsuya. 1976. Yeast RNA polymerase I: a eucaryotic zinc metalloenzyme. *Biochem. Biophys. Res. Commun.* 69:548-554.
4. Botstein, D., S. C. Falco, S. E. Stewart, M. Brennan, S. Scherer, D. T. Stinchcomb, K. Struhl, and R. W. Davis. 1979. Sterile host yeasts (shy): a eucaryotic system of biological containment for recombinant DNA experiments. *Gene* 8:17-24.
5. Brill, S. J., and R. Sternglanz. 1988. Transcription-dependent DNA supercoiling in yeast DNA topoisomerase mutants. *Cell* 54:403-411.
6. Broach, J. R., J. N. Strathern, and J. B. Hicks. 1979. Transformation in yeast: development of a hybrid cloning vector and isolation of the *can1* gene. *Gene* 8:121-133.
7. Carle, G. F., and M. V. Olson. 1985. An electrophoretic karyotype for yeast. *Proc. Natl. Acad. Sci. USA* 82:3756-3760.
8. Carlson, M., and D. Botstein. 1982. Two differentially regulated

mRNAs with different 5' ends encode secreted and intracellular forms of yeast invertase. *Cell* 28:145-154.

9. Chamberlin, M. J. 1982. Bacterial DNA-dependent RNA polymerases. p. 61-86. *In* P. D. Boyer (ed.), *The enzymes*, vol. 15. Academic Press, Inc., New York.
10. Devereux, J., P. Haerberli, and O. Smithies. 1984. A comprehensive set of sequence analysis programs for the VAX. *Nucleic Acids Res.* 12:387-395.
11. Falkenburg, D., B. Dworniczak, D. M. Faust, and E. K. F. Bautz. 1987. RNA polymerase II of *Drosophila*—relation of its 140,000 M_r subunit to the β subunit of *Escherichia coli* RNA polymerase. *J. Mol. Biol.* 195:929-937.
12. Feinberg, A. P., and B. Vogelstein. 1984. A technique for radiolabeling DNA restriction endonuclease fragments to high specific activity. *Anal. Biochem.* 137:266-267.
13. Harashima, S., A. Takagi, and Y. Oshima. 1984. Transformation of protoplasted yeast cells is directly associated with cell fusion. *Mol. Cell. Biol.* 4:771-778.
14. Hashimoto, H., Y. Kikuchi, Y. Nogi, and T. Fukasawa. 1983. Regulation of expression of the galactose gene cluster in *Saccharomyces cerevisiae*. *Mol. Gen. Genet.* 191:31-38.
15. Hirano, T., G. Konoha, T. Toda, and M. Yanagida. 1989. Essential roles of the RNA polymerase I largest subunit and DNA topoisomerases in the formation of fission yeast nucleus. *J. Cell Biol.* 108:243-253.
16. Huet, J., A. Sentenac, and P. Fromageot. 1982. Spot-immunodetection of conserved determinants in eucaryotic RNA polymerases. Study with antibodies to yeast RNA polymerase subunits. *J. Biol. Chem.* 257:2613-2618.
- 16a. James, P., S. Whelen, and B. D. Hall. Submitted for publication.
17. Johnston, J. R. 1988. Yeast genetics, molecular aspects, p. 107-123. *In* I. Campbell and J. H. Duffus (ed.), *Yeast: a practical approach*. IRL Press, Oxford.
18. Johnston, M. 1987. A model fungal gene regulatory mechanism: the *GAL* genes of *Saccharomyces cerevisiae*. *Microbiol. Rev.* 51:458-476.

19. Jakerst, R. S., J. R. Weeks, W. A. Zehring, and A. L. Greenleaf. 1989. Analysis of the gene encoding the largest subunit of RNA polymerase II in *Drosophila*. *Mol. Gen. Genet.* **215**:266–275.
20. Kontermann, R., S. Sitzler, W. Seifarth, G. Petersen, and E. K. F. Bautz. 1989. Primary structure and functional aspects of the gene coding for the second-largest subunit of RNA polymerase III of *Drosophila*. *Mol. Gen. Genet.* **219**:373–380.
21. Leffers, H., F. Gropp, F. Lottspeich, W. Zillig, and R. A. Garrett. 1989. Sequence, organization, transcription and evolution of RNA polymerase subunit genes from the archaeobacterial extreme halophiles *Halobacterium halobium* and *Halococcus morrhuae*. *J. Mol. Biol.* **206**:1–17.
22. Lewis, M. K., and R. R. Burgess. 1982. Eukaryotic RNA polymerases, p. 109–153. In P. D. Boyer (ed.), *The enzymes*, vol. 15. Academic Press, Inc., New York.
23. Martin, C., S. Okamura, and R. Young. 1990. Genetic exploration of interactive domains in RNA polymerase II subunits. *Mol. Cell. Biol.* **10**:1908–1914.
24. Martindale, D. W. 1990. A conjugation-specific gene (cnjC) from *Tetrahymena* encodes a protein homologous to yeast RNA polymerase subunits (RPB3, RPC40) and similar to a portion of the prokaryotic RNA polymerase α subunit (rpoA). *Nucleic Acids Res.* **18**:2953–2960.
- 24a. McCusker, J. H., M. Yamagishi, J. M. Kolb, and M. Nomura. 1991. Suppressor analysis of temperature-sensitive RNA polymerase I mutations in *Saccharomyces cerevisiae*: suppression of mutations in a zinc-binding motif by transposed mutant genes. *Mol. Cell. Biol.* **11**:746–753.
25. Mémet, S., M. Gouy, C. Marck, A. Sentenac, and J.-M. Buhler. 1988. *RPA190*, the gene coding for the largest subunit of yeast RNA polymerase A. *J. Biol. Chem.* **263**:2830–2838.
26. Mémet, S., W. Saurin, and A. Sentenac. 1988. RNA polymerases B and C are more closely related to each other than to RNA polymerase A. *J. Biol. Chem.* **263**:10048–10051.
27. Mortin, M. A. 1990. Use of second-site suppressor mutations in *Drosophila* to identify components of the transcriptional machinery. *Proc. Natl. Acad. Sci. USA* **87**:4864–4868.
28. Nogi, Y., and T. Fukasawa. 1989. Functional domains of a negative regulatory protein, GAL80, of *Saccharomyces cerevisiae*. *Mol. Cell. Biol.* **9**:3009–3017.
29. Nonet, M. L., and R. A. Young. 1989. Intragenic and extragenic suppressors of mutations in the heptapeptide repeat domain of *Saccharomyces cerevisiae* RNA polymerase II. *Genetics* **123**:715–724.
30. Pearson, W. R., and D. J. Lipman. 1988. Improved tools for biological sequence comparison. *Proc. Natl. Acad. Sci. USA* **85**:2444–2448.
- 30a. Riva, M., C. Carles, and A. Sentenac. Personal communication.
31. Riva, M., A. R. Schäffner, A. Sentenac, G. R. Hartmann, A. A. Mustaev, E. F. Zaychikov, and M. A. Grachev. 1987. Active site labeling of the RNA polymerases A, B, and C from yeast. *J. Biol. Chem.* **262**:14377–14380.
32. Rose, M. D., P. Novick, J. H. Thomas, D. Botstein, and G. R. Fink. 1987. A *Saccharomyces cerevisiae* genomic plasmid bank based on a centromere-containing shuttle vector. *Gene* **60**:237–243.
33. Sambrook, J., E. F. Fritsch, and T. Maniatis. 1989. *Molecular cloning: a laboratory manual*, 2nd ed. Cold Spring Harbor Laboratory, Cold Spring Harbor, N.Y.
34. Sawadogo, M., and A. Sentenac. 1990. RNA polymerase B (II) and general transcription factors. *Annu. Rev. Biochem.* **59**:711–754.
35. Sentenac, A. 1985. Eukaryotic RNA polymerases. *Crit. Rev. Biochem.* **18**:31–90.
36. Sherman, F., G. R. Fink, and J. B. Hicks. 1986. *Methods in yeast genetics. Laboratory manual*, p. 164. Cold Spring Harbor Laboratory, Cold Spring Harbor, N.Y.
37. Sikorski, R. S., and P. Hieter. 1989. A system of shuttle vectors and yeast host strains designed for efficient manipulation of DNA in *Saccharomyces cerevisiae*. *Genetics* **122**:19–27.
38. Smith, J. L., J. R. Levin, and N. Agabian. 1989. Molecular characterization of the *Trypanosoma brucei* RNA polymerase I and III largest subunit genes. *J. Biol. Chem.* **264**:18091–18099.
39. Smith, J. L., J. R. Levin, C. J. Ingles, and N. Agabian. 1989. In trypanosomes the homolog of the largest subunit of RNA polymerase II is encoded by two genes and has a highly unusual C-terminal domain structure. *Cell* **56**:815–827.
40. Sweetser, D., M. Nonet, and R. A. Young. 1987. Prokaryotic and eukaryotic RNA polymerases have homologous core subunits. *Proc. Natl. Acad. Sci. USA* **84**:1192–1196.
41. Tabor, S., and C. C. Richardson. 1987. DNA sequence analysis with a modified bacteriophage T7 DNA polymerase. *Proc. Natl. Acad. Sci. USA* **84**:4767–4771.
42. Wilson, D. W., and P. A. Meacock. 1988. Extracellular gene expression in yeast: evidence for a plasmid-encoded RNA polymerase of unique structure. *Nucleic Acids Res.* **16**:8097–8112.
43. Wittekind, M., J. Dodd, L. Vu, J. M. Kolb, J.-M. Buhler, A. Sentenac, and M. Nomura. 1988. Isolation and characterization of temperature-sensitive mutations in *RPA190*, the gene encoding the largest subunit of RNA polymerase I from *Saccharomyces cerevisiae*. *Mol. Cell. Biol.* **8**:3997–4008.
44. Wittekind, M., J. M. Kolb, J. Dodd, M. Yamagishi, S. Mémet, J.-M. Buhler, and M. Nomura. 1990. Conditional expression of *RPA190*, the gene encoding the largest subunit of yeast RNA polymerase I: effects of decreased rRNA synthesis on ribosomal protein synthesis. *Mol. Cell. Biol.* **10**:2049–2059.
45. Woychik, N. A., and R. A. Young. 1990. RNA polymerase II subunit structure and function. *Trends Biochem. Sci.* **15**:347–351.
46. Yamagishi, M., and M. Nomura. 1988. Cloning and sequence determination of the gene encoding the largest subunit of the fission yeast *Schizosaccharomyces pombe* RNA polymerase I. *Gene* **74**:503–515.
47. Young, R. A., and R. W. Davis. 1983. Yeast RNA polymerase II genes: isolation with antibody probes. *Science* **222**:778–782.
48. Yura, T., and A. Ishihama. 1979. Genetics of bacterial RNA polymerases. *Annu. Rev. Genet.* **13**:59–97.