

## **Additional figures**

**Additional figure 1:** Agarose gels showing DNA pattern of positive samples from the first multiplex reaction with 3 IHHNV primers sets (A) and the second reaction with 2 IHHNV primer sets with an actin-derived primer pair (B). Lanes 1 and 8, DNA ladder; 2, positive control (plasmids containing complete IHHNV genome); 3-6, individual shrimp samples; 7, negative control

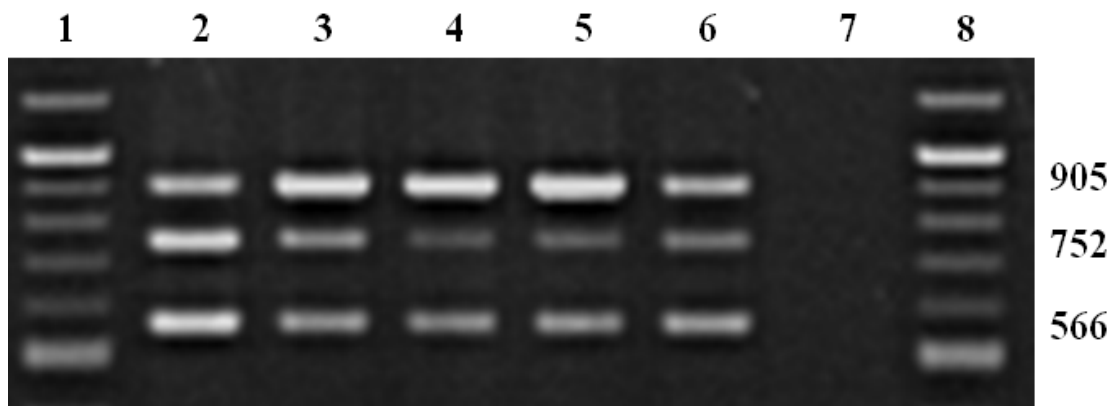
**Additional figure 2:** Agarose gels showing DNA pattern of samples with putative viral inserts from the first multiplex reaction (A) and the second reaction (B). Lanes 1 and 7, DNA ladder; 2, positive control (plasmids containing entire IHHNV genome); 3-5, individual shrimp samples; 6, negative control

**Additional figure 3:** Sensitivity analysis of the first multiplex reaction in (A), and the second reaction in (B). Lanes 1 and 10, DNA ladder; 2, positive control; 3-8, the amount of DNA template varying from 200 ng, 20 ng, 2 ng, 200 pg, 20 pg, 2 pg, respectively; 9, negative.

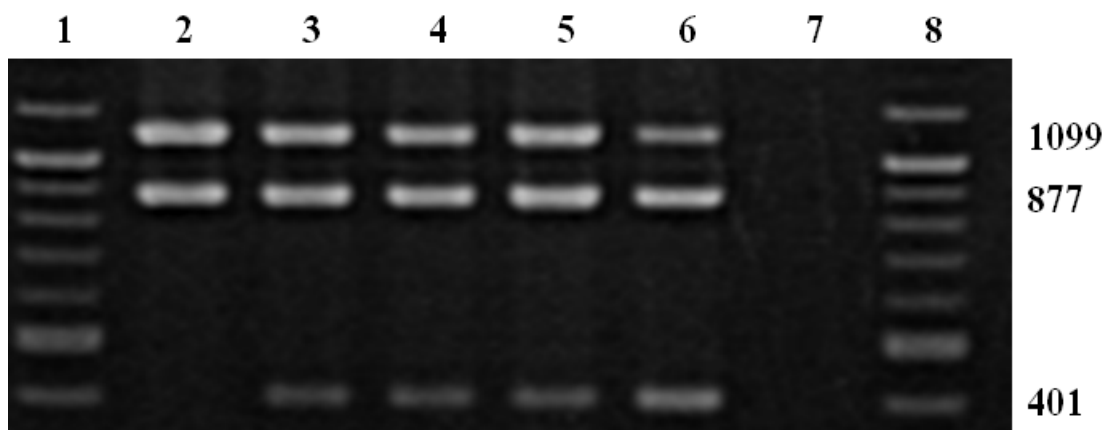
## Additional figures (cont.)

### Additional figure 1

A)

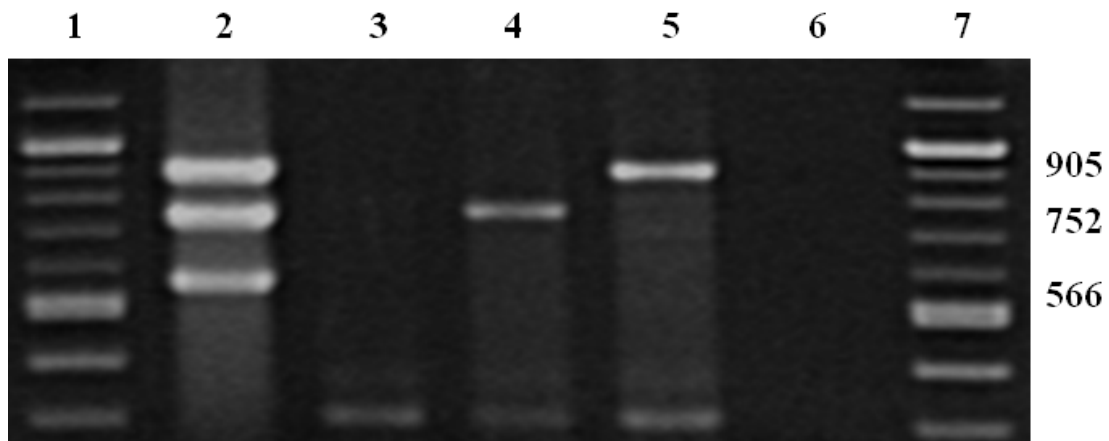


B)

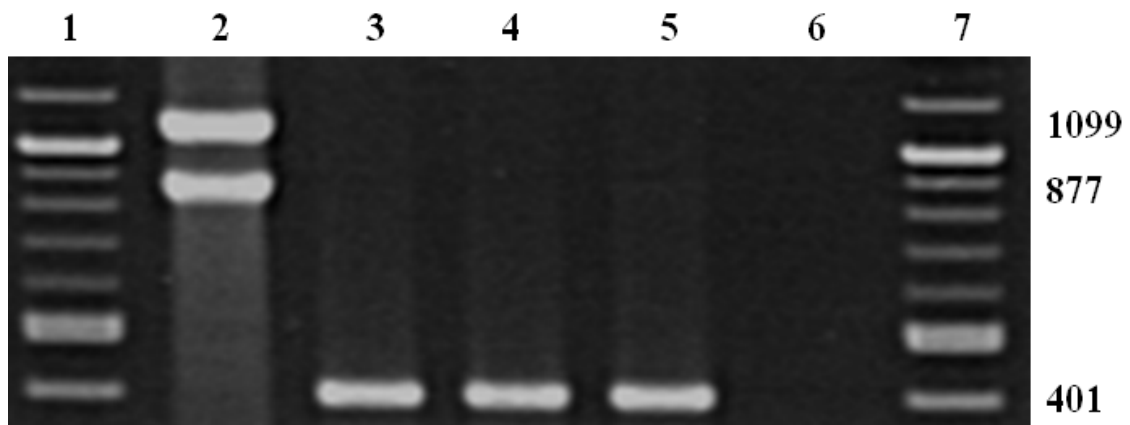


**Additional figure 2**

A)

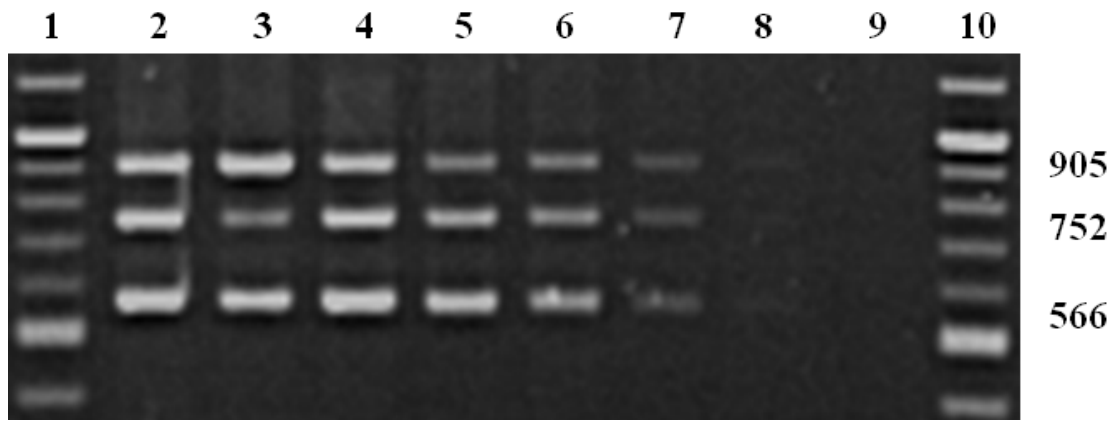


B)



**Additional figure 3**

A)



B)

