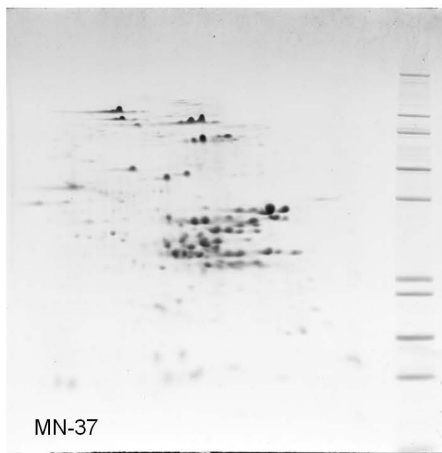
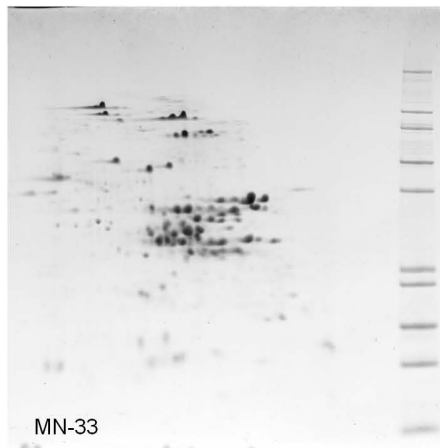
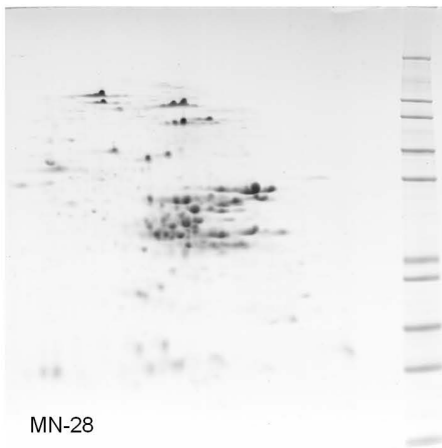
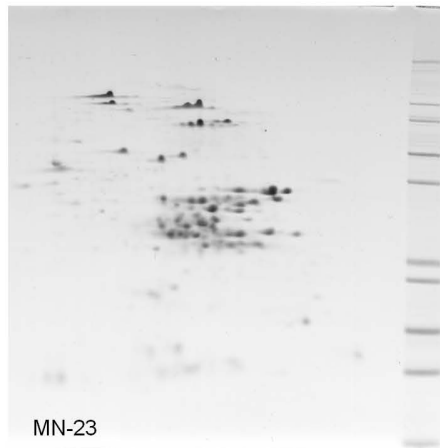
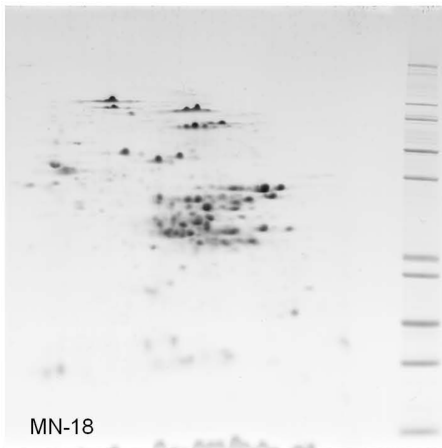
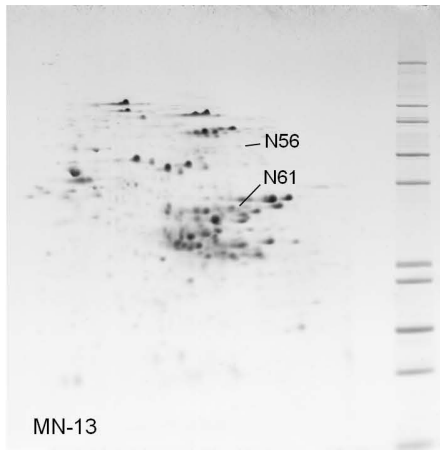
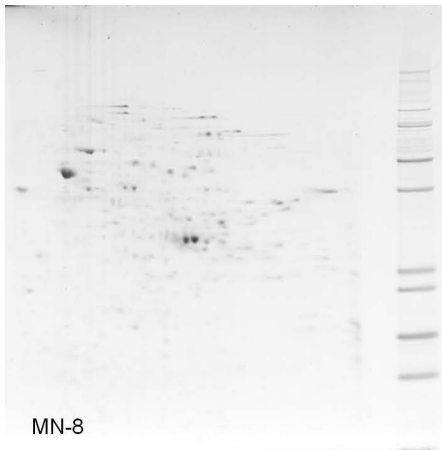
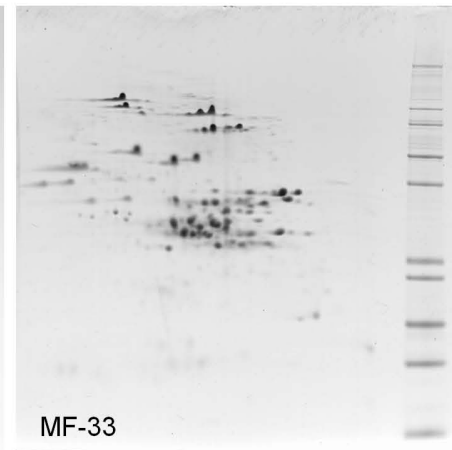
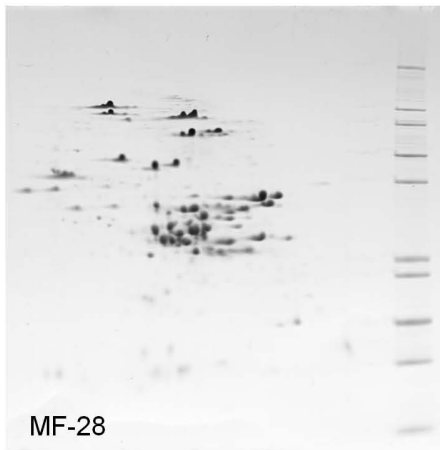
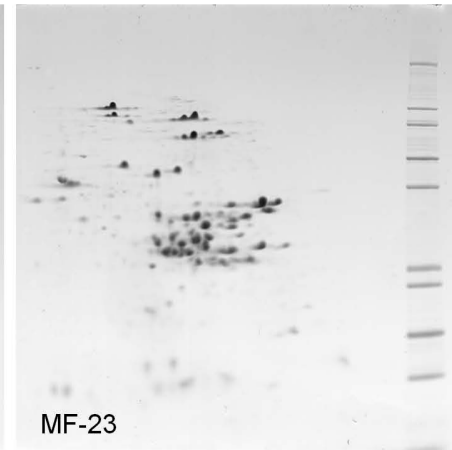
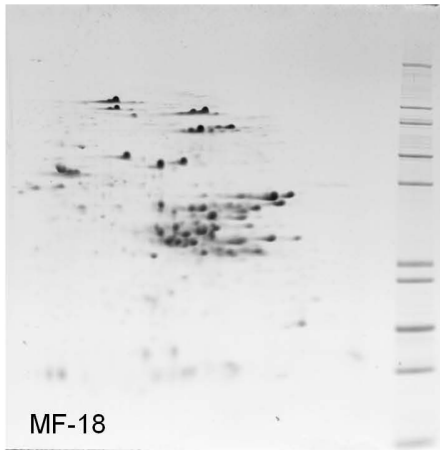
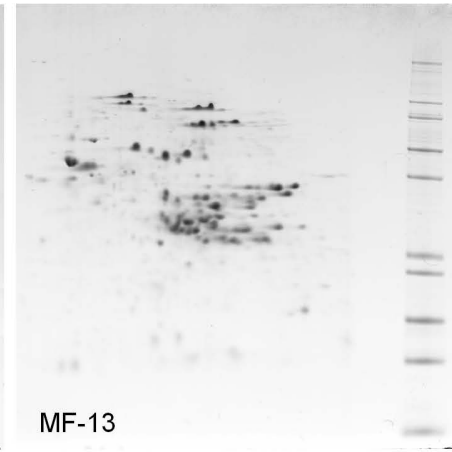
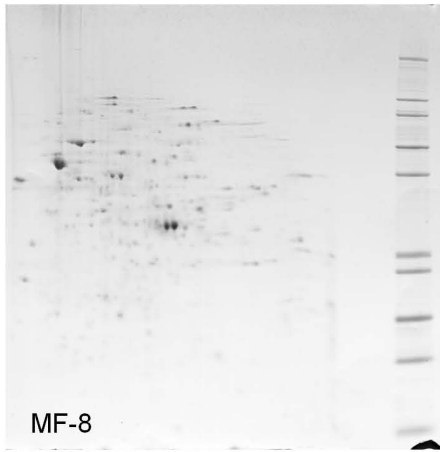


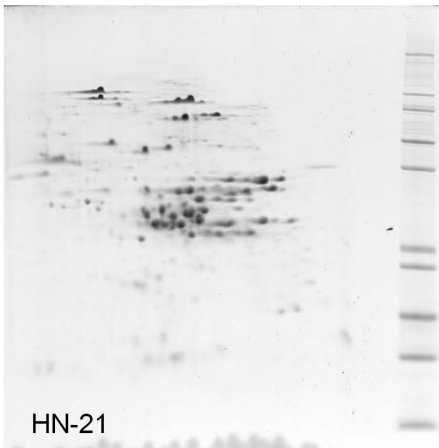
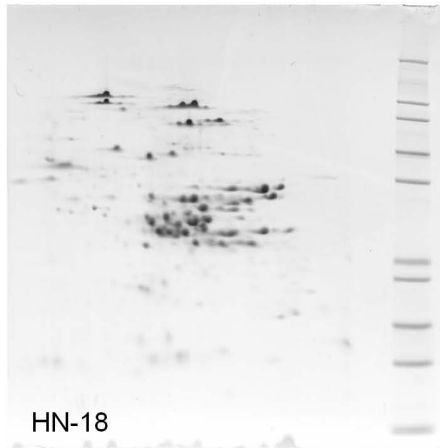
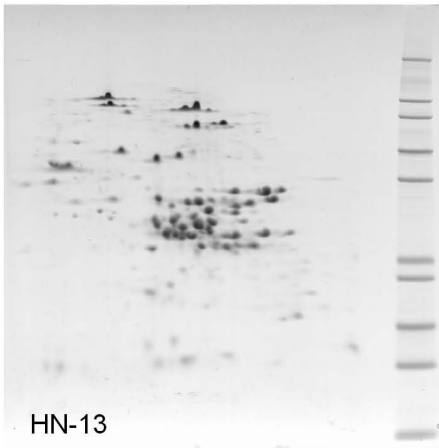
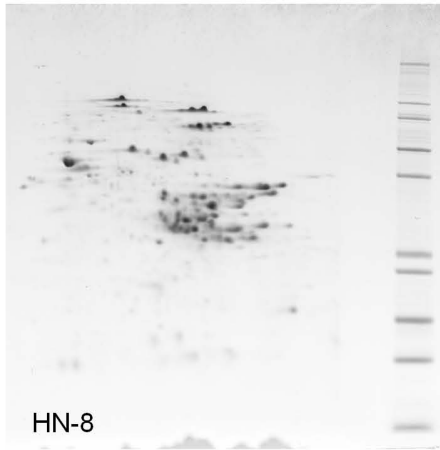
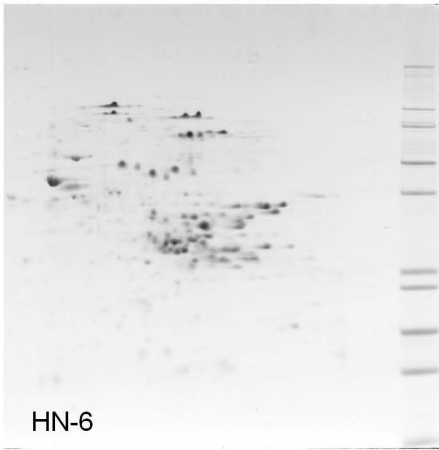
Additional file 1A: Representative 2-D gels of endosperm proteins collected from 8 to 37 dpa under a moderate temperature regimen without fertilizer.



Additional file 1B: Representative 2-D gels of endosperm proteins collected from 8 to 37 dpa under a moderate temperature regimen with fertilizer.



Additional file 1C: Representative 2-D gels of endosperm proteins collected from 6 to 21 dpa under a high temperature regimen without fertilizer.



Additional file 1D: Representative 2-D gels of endosperm proteins collected from 6 to 21 dpa under a high temperature regimen with fertilizer.

