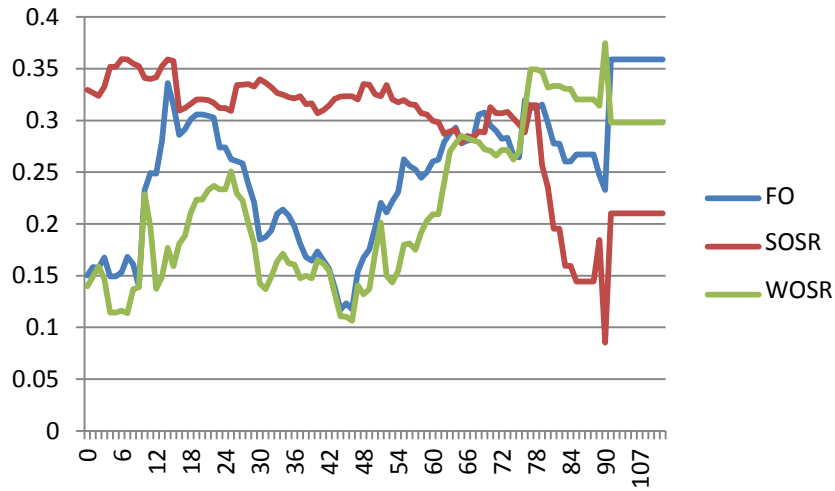
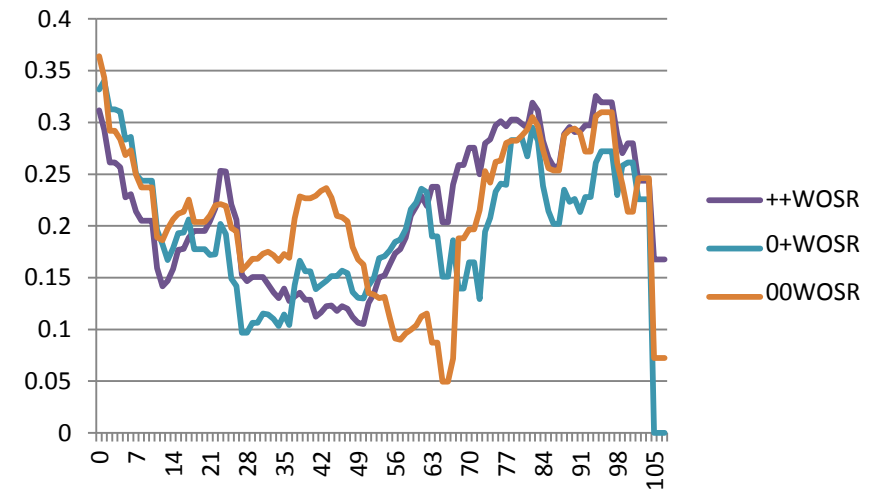
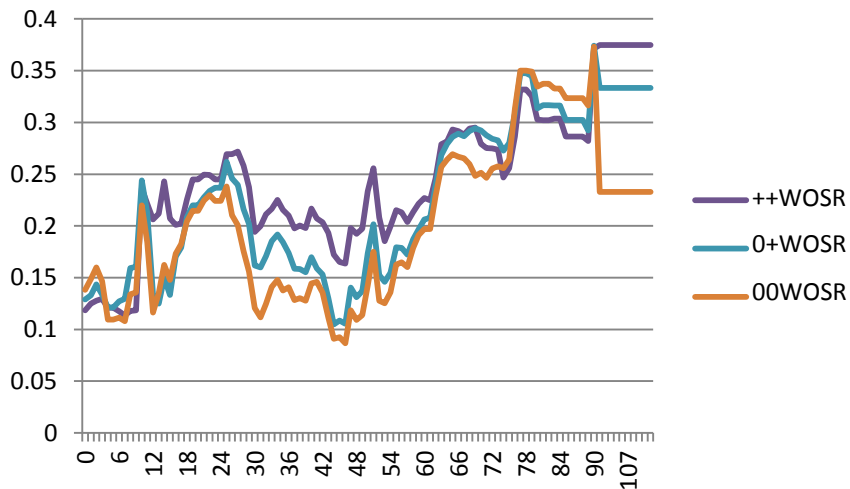
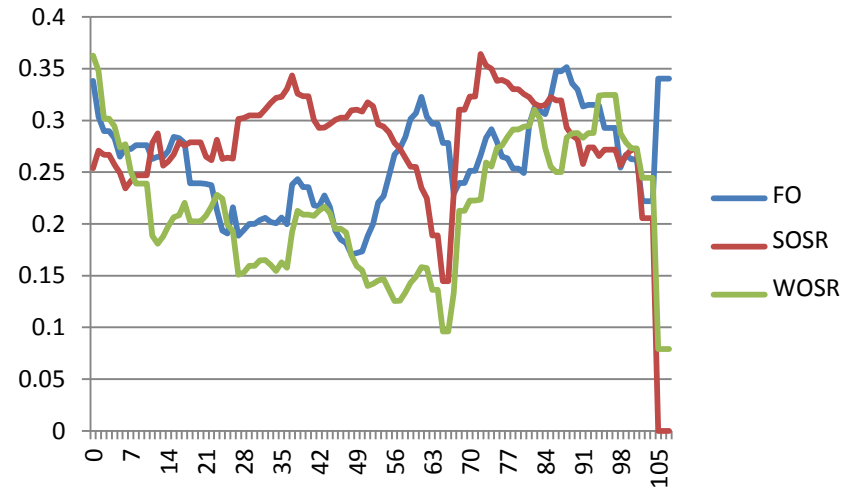


Supplementary figure 3: Distribution of PIC values along the linkage groups in the fodder rape (FO), spring (SOSR) and winter (WOSR) oilseed rape and the different seed quality subgroups (++, 0+, 00) within WOSR. PIC was averaged across a sliding window of 10 cM with a step of one cM.

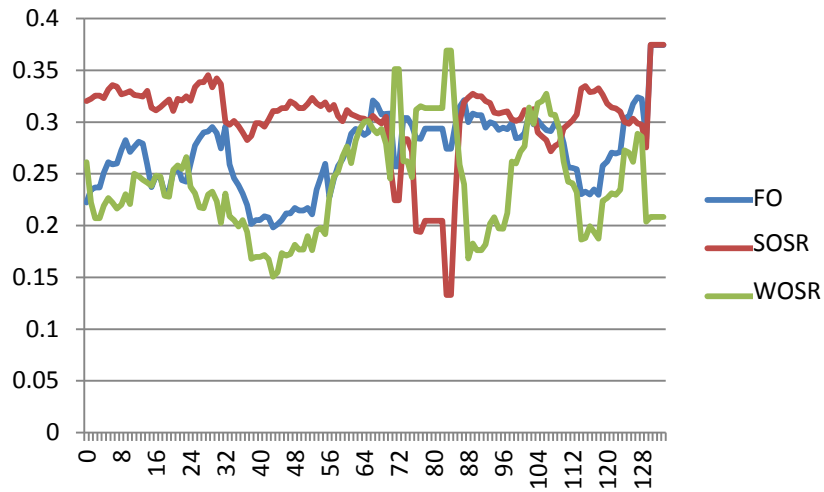
A1



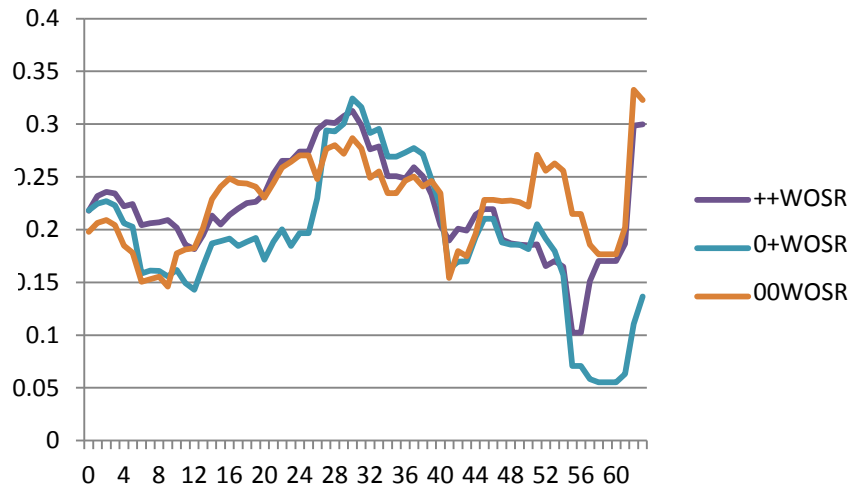
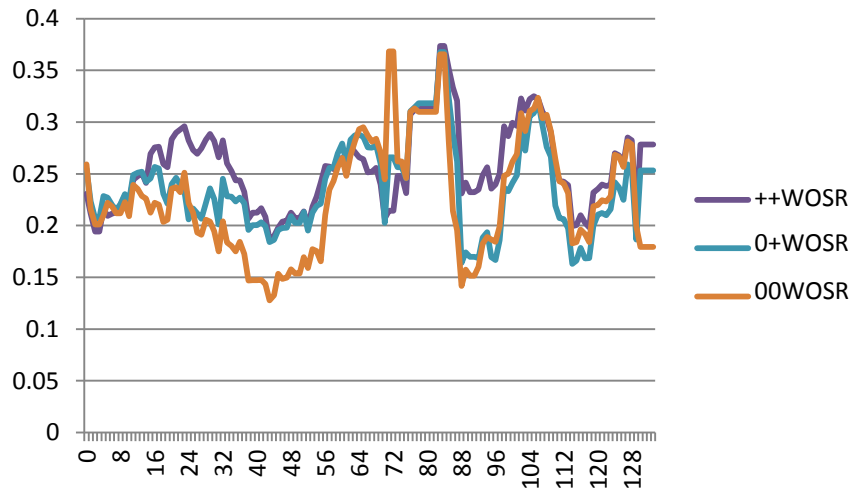
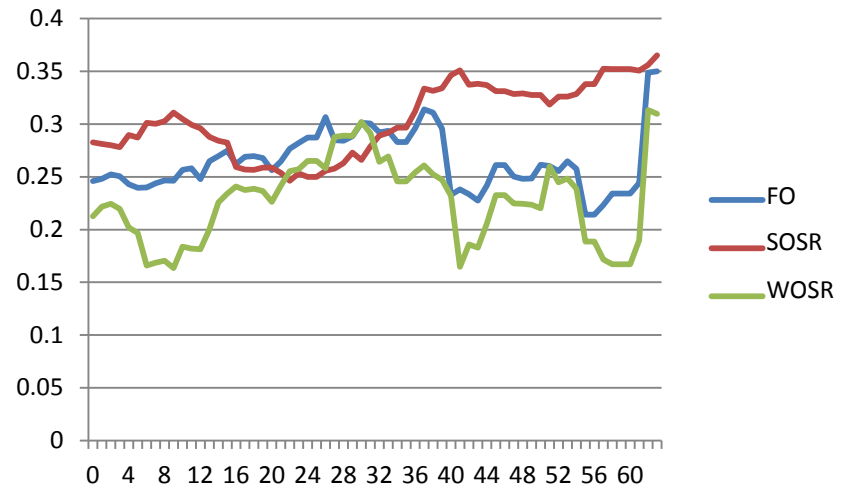
A2



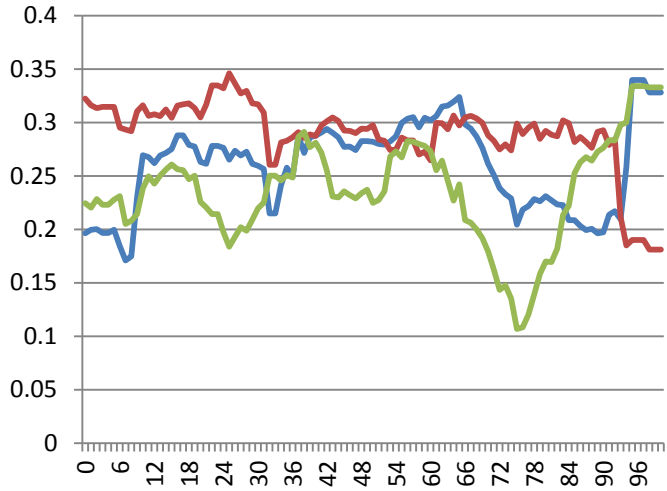
A3



A4

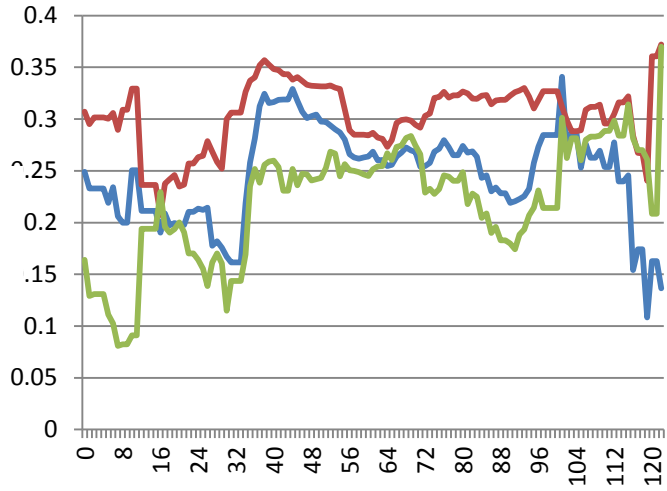


A5

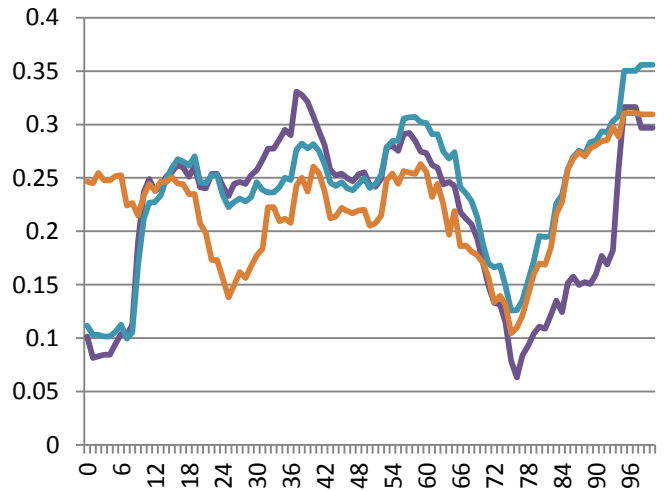


FO
SOSR
WOSR

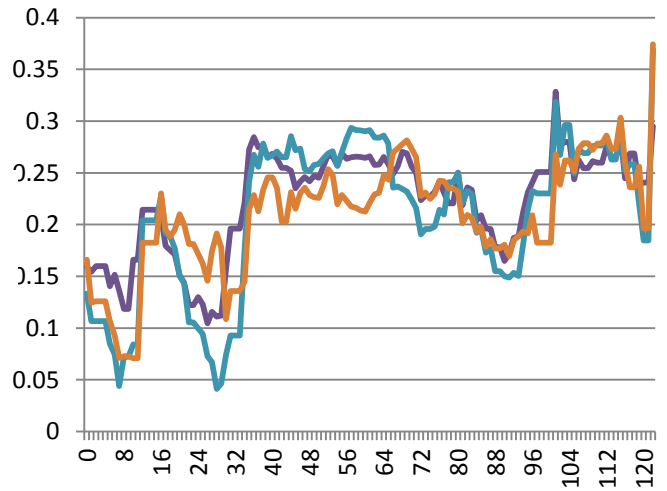
A6



FO
SOSR
WOSR

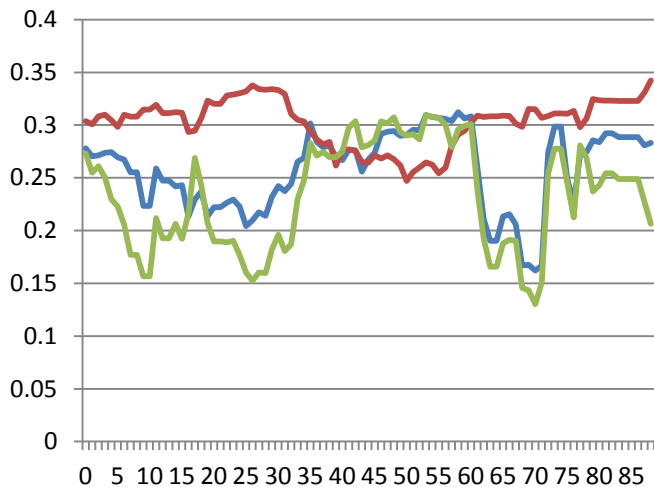


++WOSR
0+WOSR
00WOSR

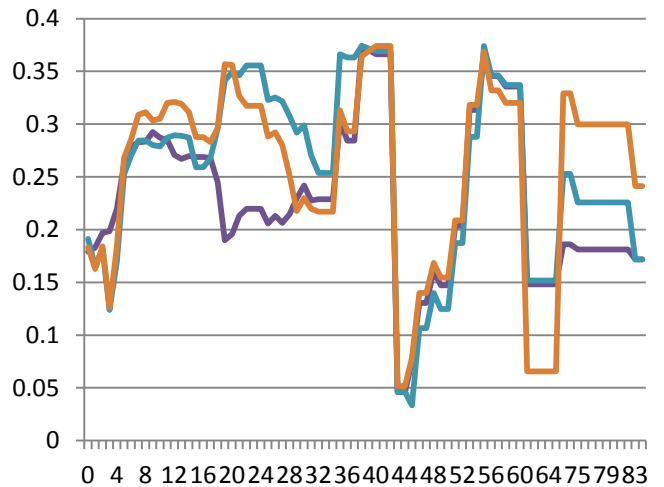
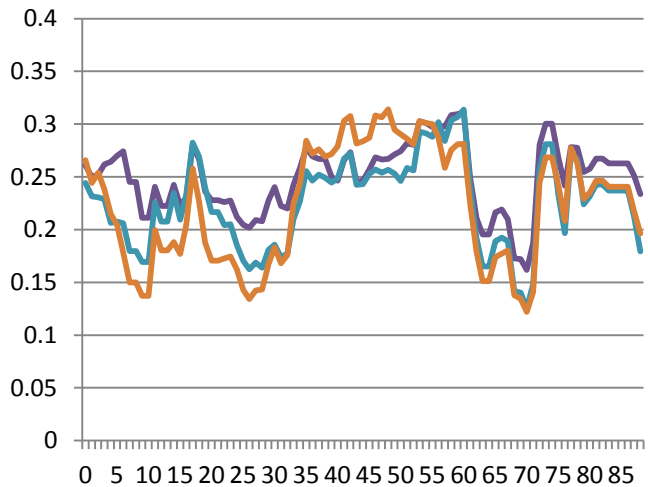
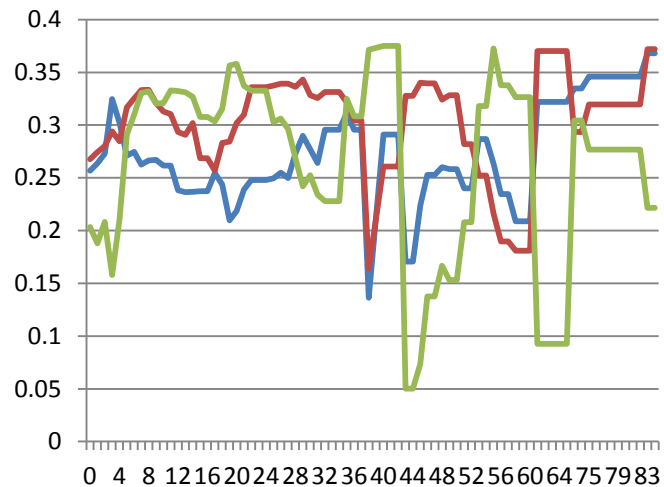


++WOSR
0+WOSR
00WOSR

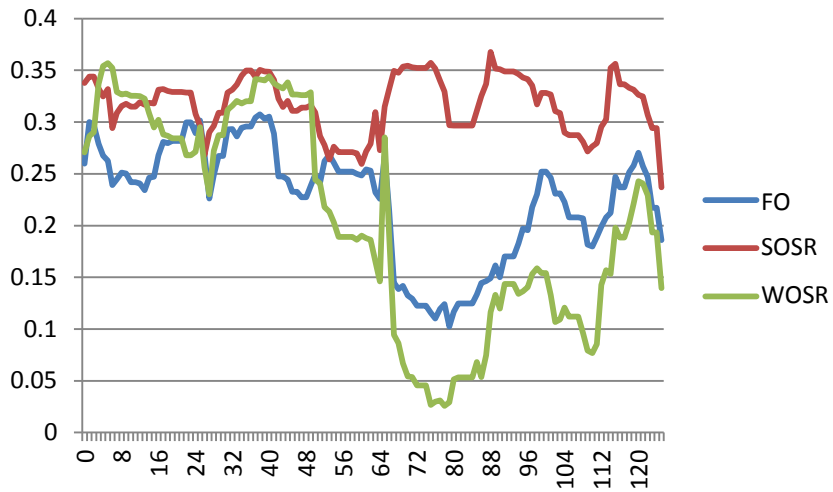
A7



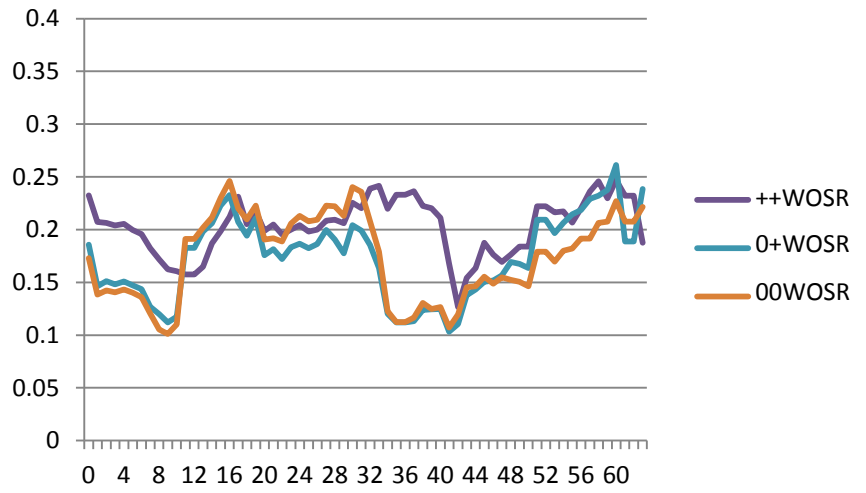
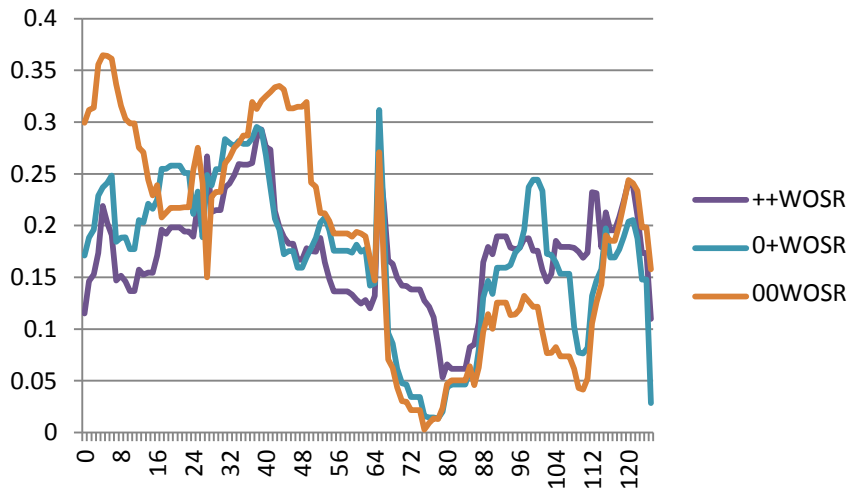
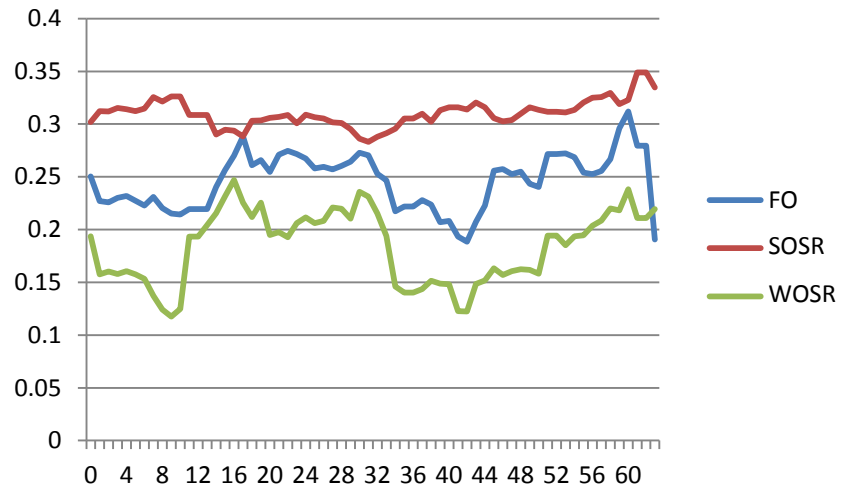
A8



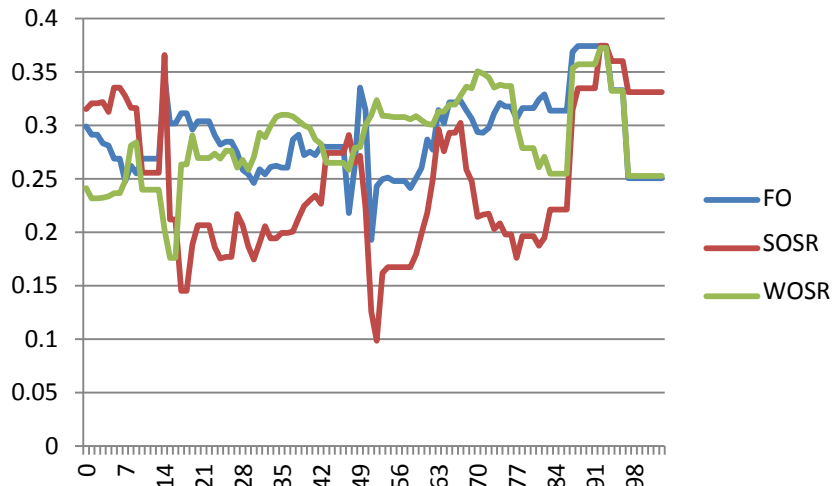
A9



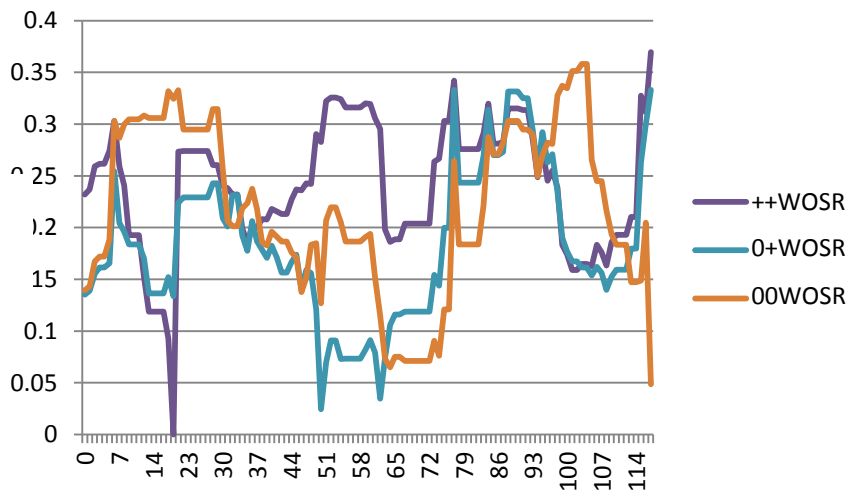
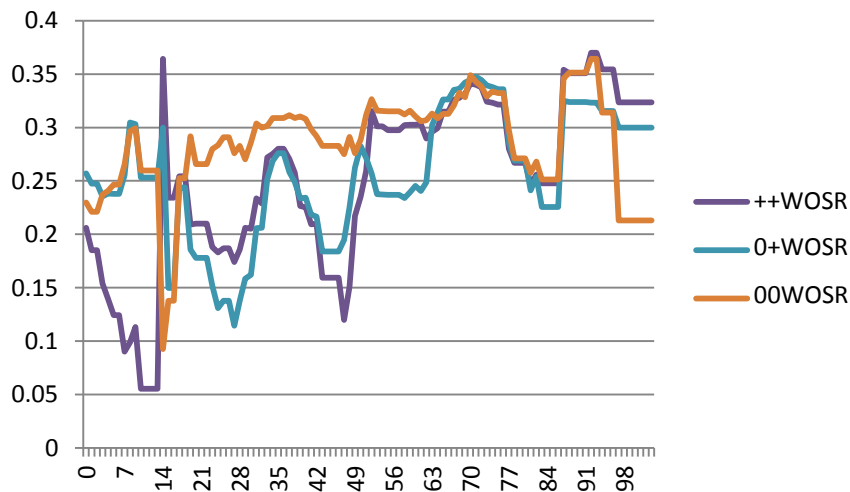
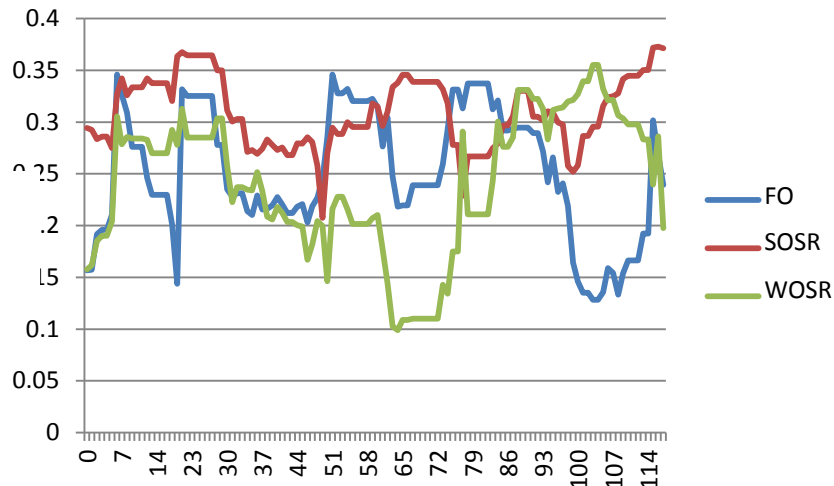
A10



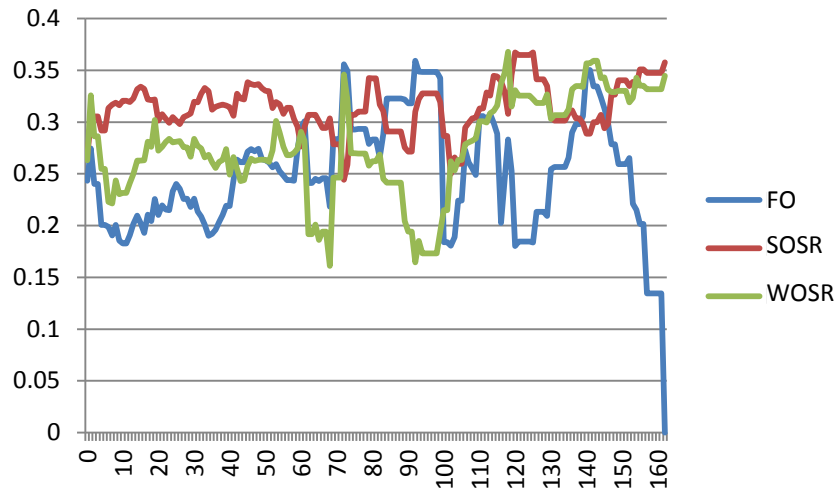
C1



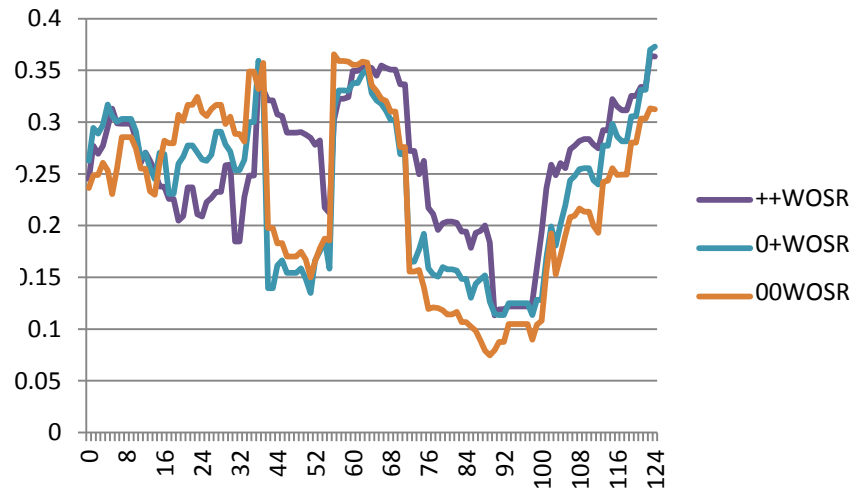
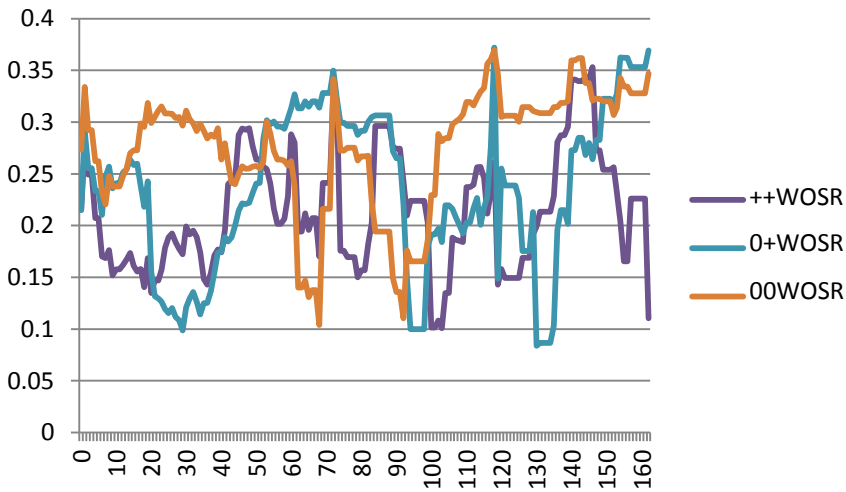
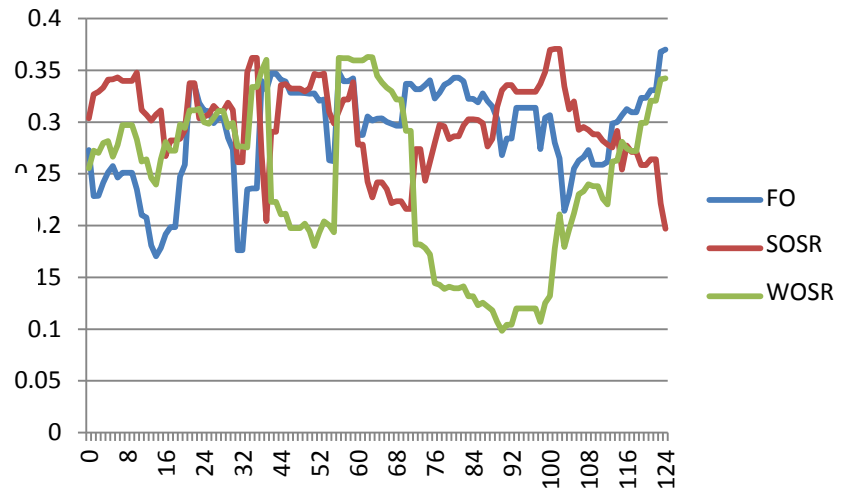
C2



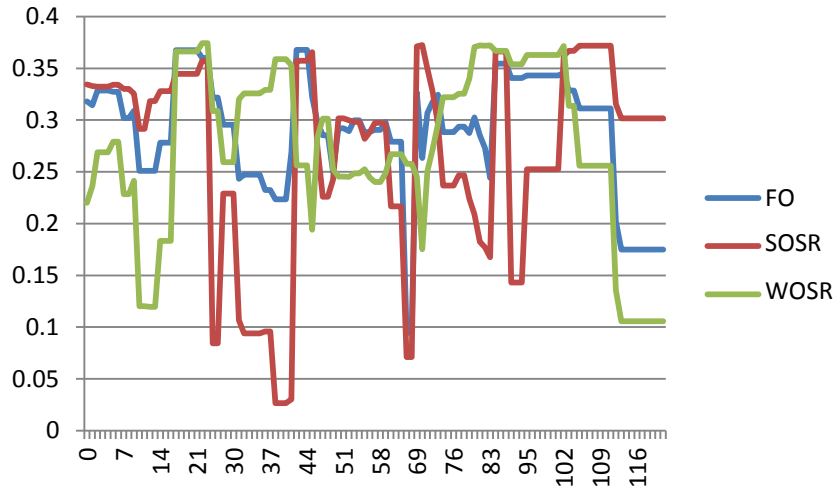
C3



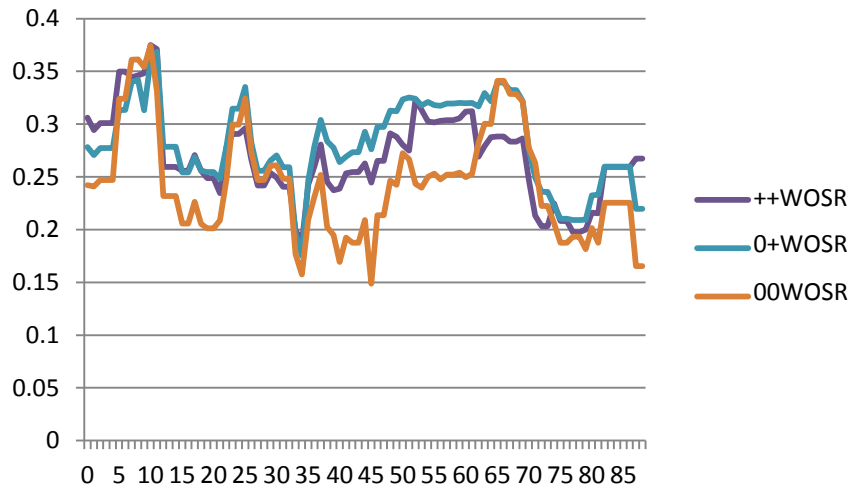
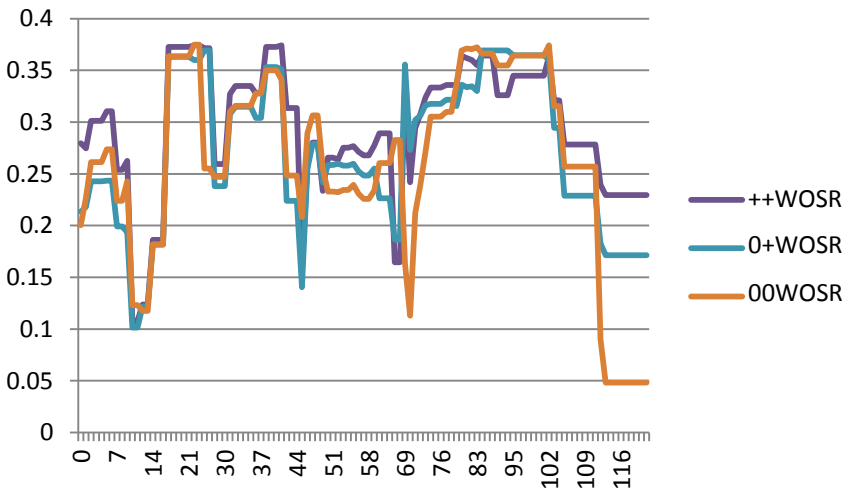
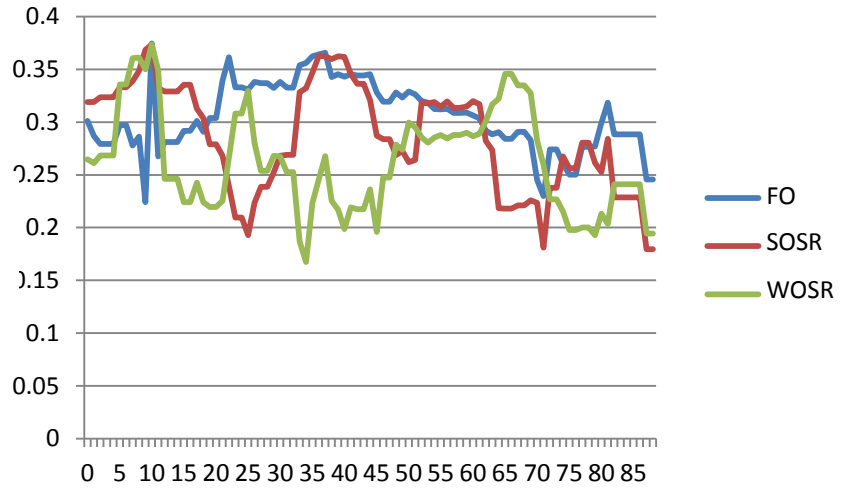
C4



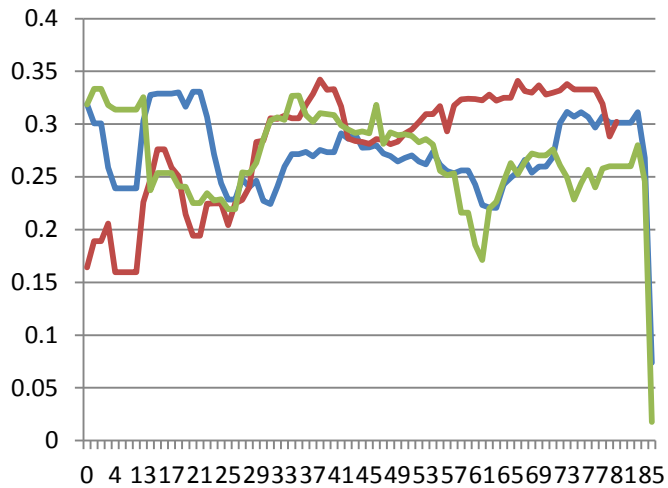
C5



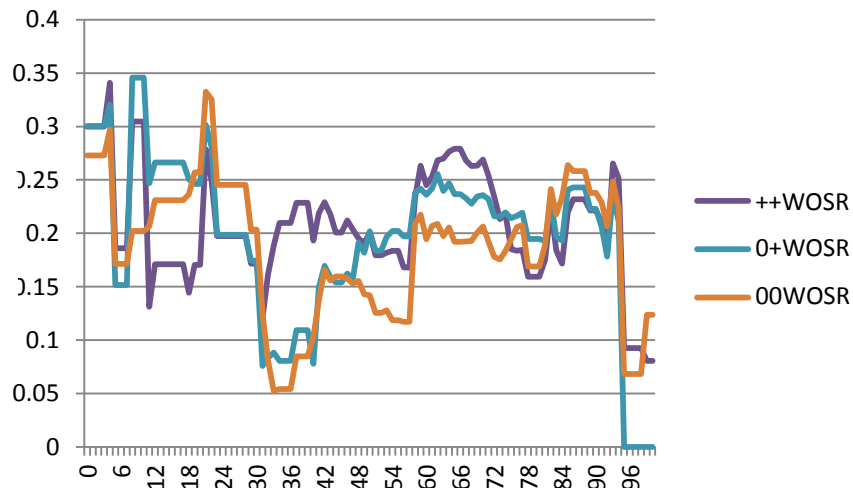
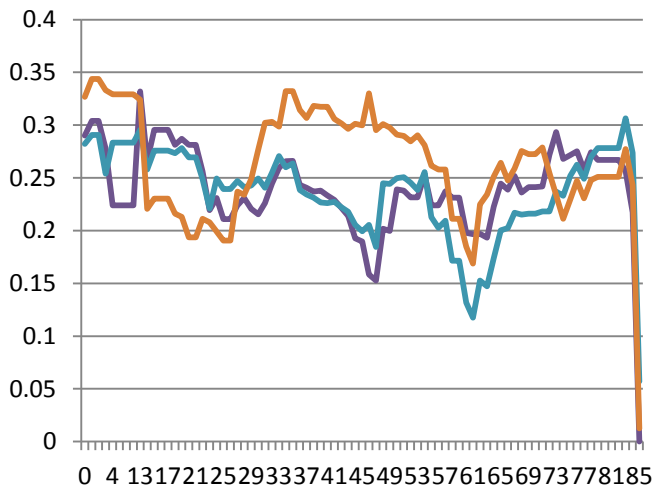
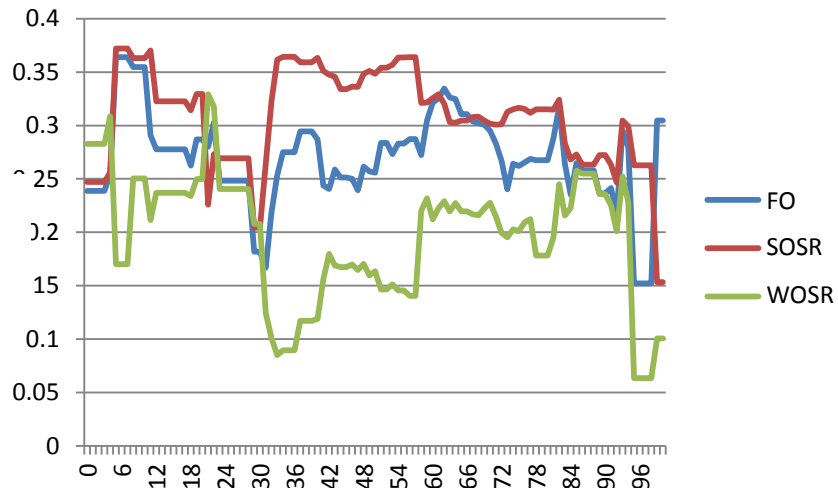
C6



C7



C8



C9

