

SUPPLEMENTAL MATERIAL

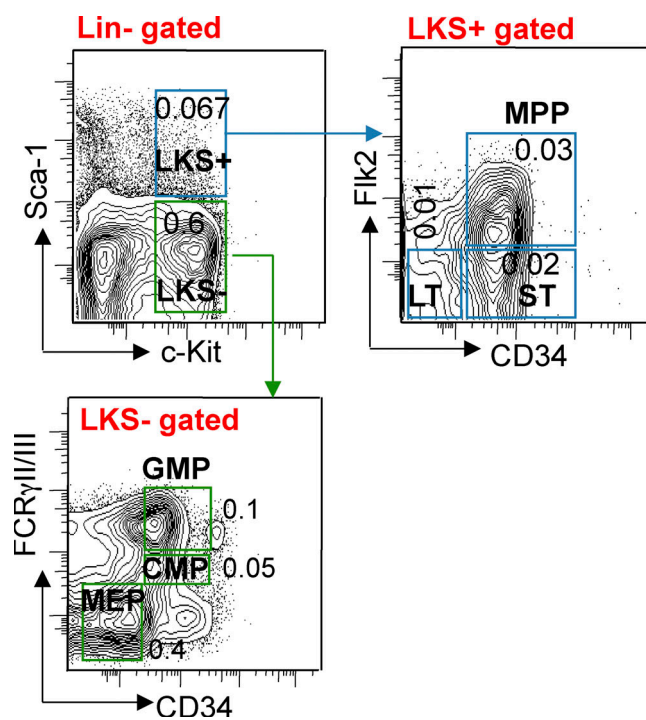
Brenet et al., <http://www.jem.org/cgi/content/full/jem.20121610/DC1>

Figure S1. Flow cytometry gating strategy. Representative plots of the LKS⁺ and LKS⁻ populations are shown. Back numbers indicate frequency of total BM in untreated, homeostatic mice (D0). LKS⁺ (Lin⁻cKit⁺Sca1⁺), LT (LKS⁺Flk2⁻CD34⁻), ST (LKS⁺Flk2⁻CD34⁺), MPPs (LKS⁺Flk2⁺CD34⁺), LKS⁻ (Lin⁻cKit⁺Sca1⁻), CMPs (LKS⁻FcRγII/III⁺CD34⁺), GMPs (LKS⁻FcRγII/III⁺CD34⁺), and MEPs (LKS⁻FcRγII/III⁻CD34⁻) are shown.