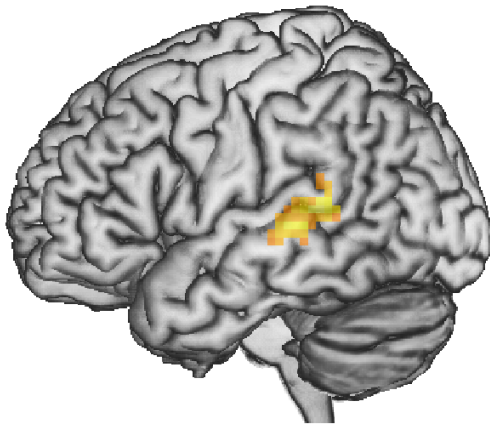
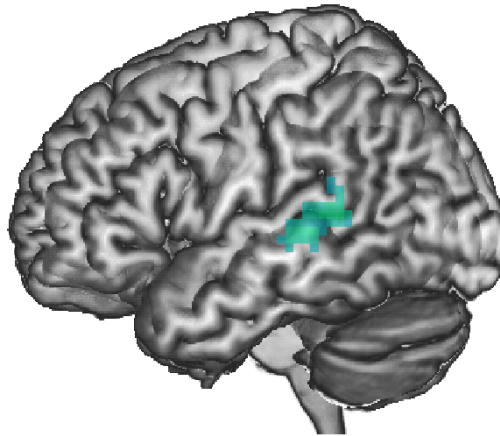


Older group sensitivity to imageability with and without hearing covariate

Without hearing covariate



With hearing covariate



S1. Left middle temporal region demonstrating sensitivity to imageability in the older group with and without average hearing threshold included as a covariate. The MTG/STG cluster shown without hearing covariate is identical to that shown in Figure 3C. The MTG/STG cluster shown with hearing covariate is reported at a voxel threshold of $p < .005$, and is marginally significant at a cluster-level correction, $p = .051$.