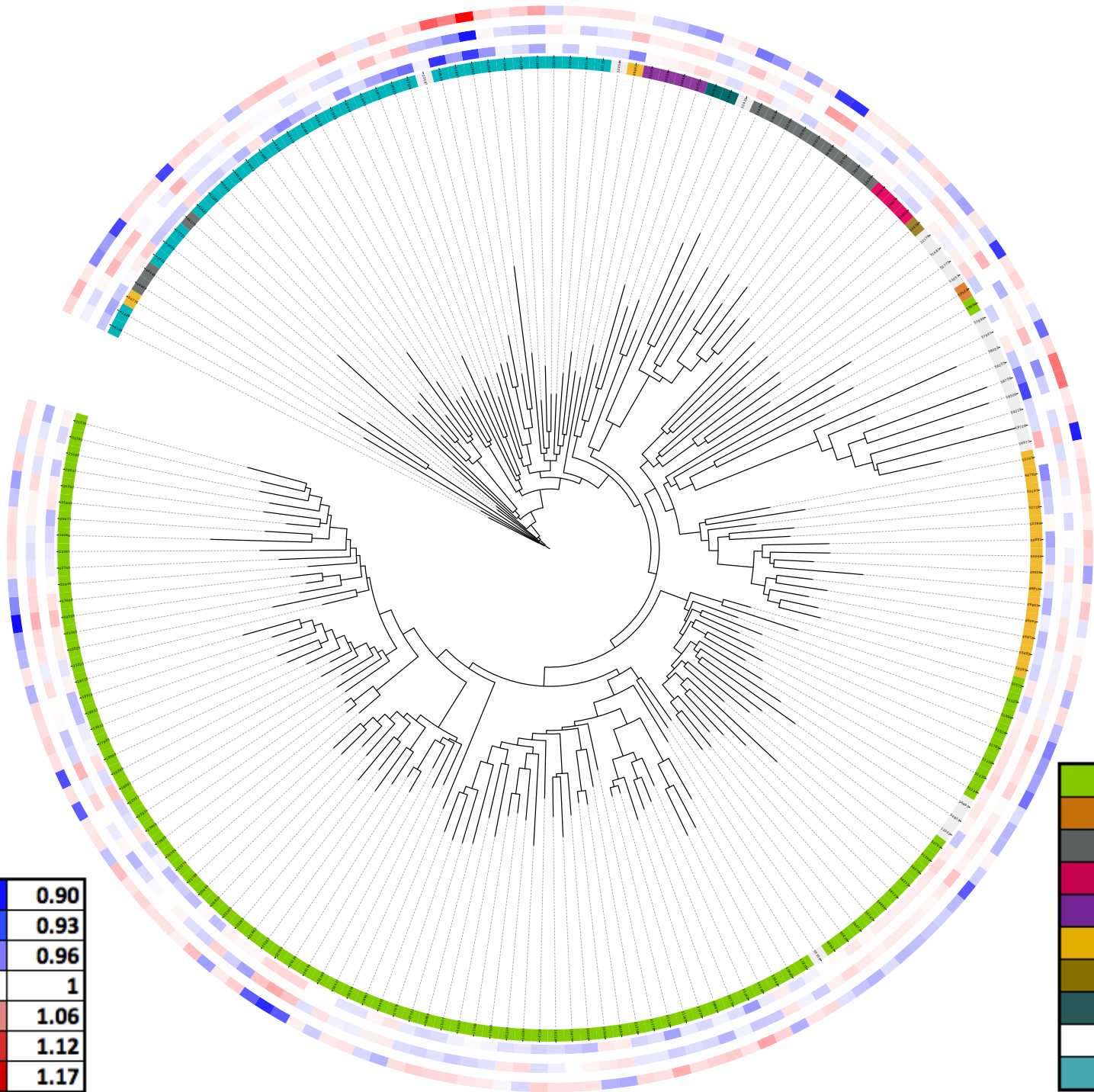


Blue	0.90
Light Blue	0.93
Very Light Blue	0.96
White	1
Light Red	1.06
Red	1.12
Dark Red	1.17



Green	Proteobacteria
Brown	Chloroflexi
Grey	Bacteroidetes
Pink	Acidobacteria
Purple	Spirochaetes
Yellow	Actinobacteria
Olive	Planctomycetes
Dark Green	Cyanobacteria
White	Other Phylum
Teal	Firmicutes