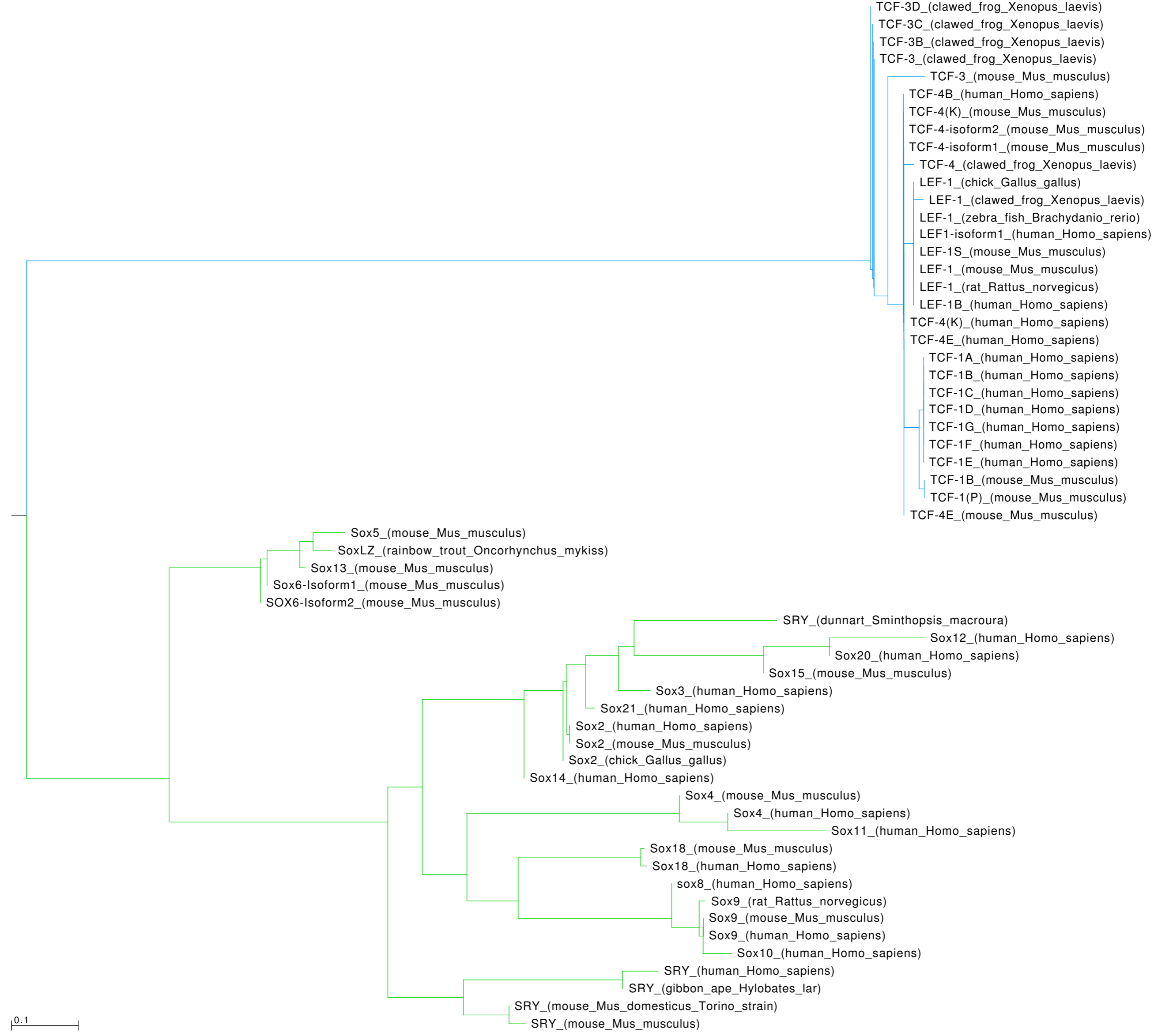


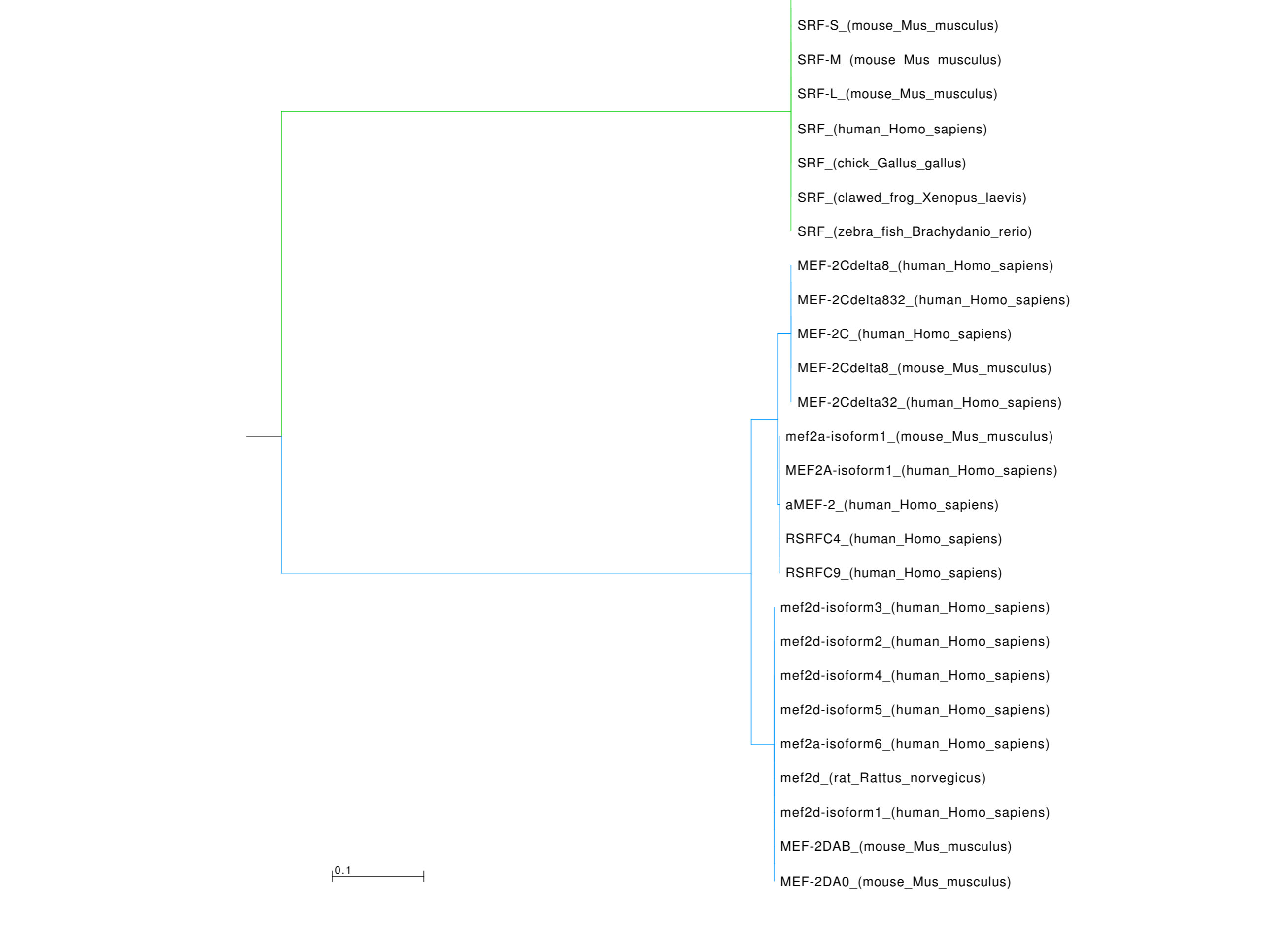
**A-D.** DNA-binding phylogenies for HMG, MADS, SMAD and STAT classes. Phylogenies were compiled as described in Material and Methods. Colors highlight protein subgroups corresponding to motif clusters.

**E.** Clustering of Transfac motifs calculated with m2match

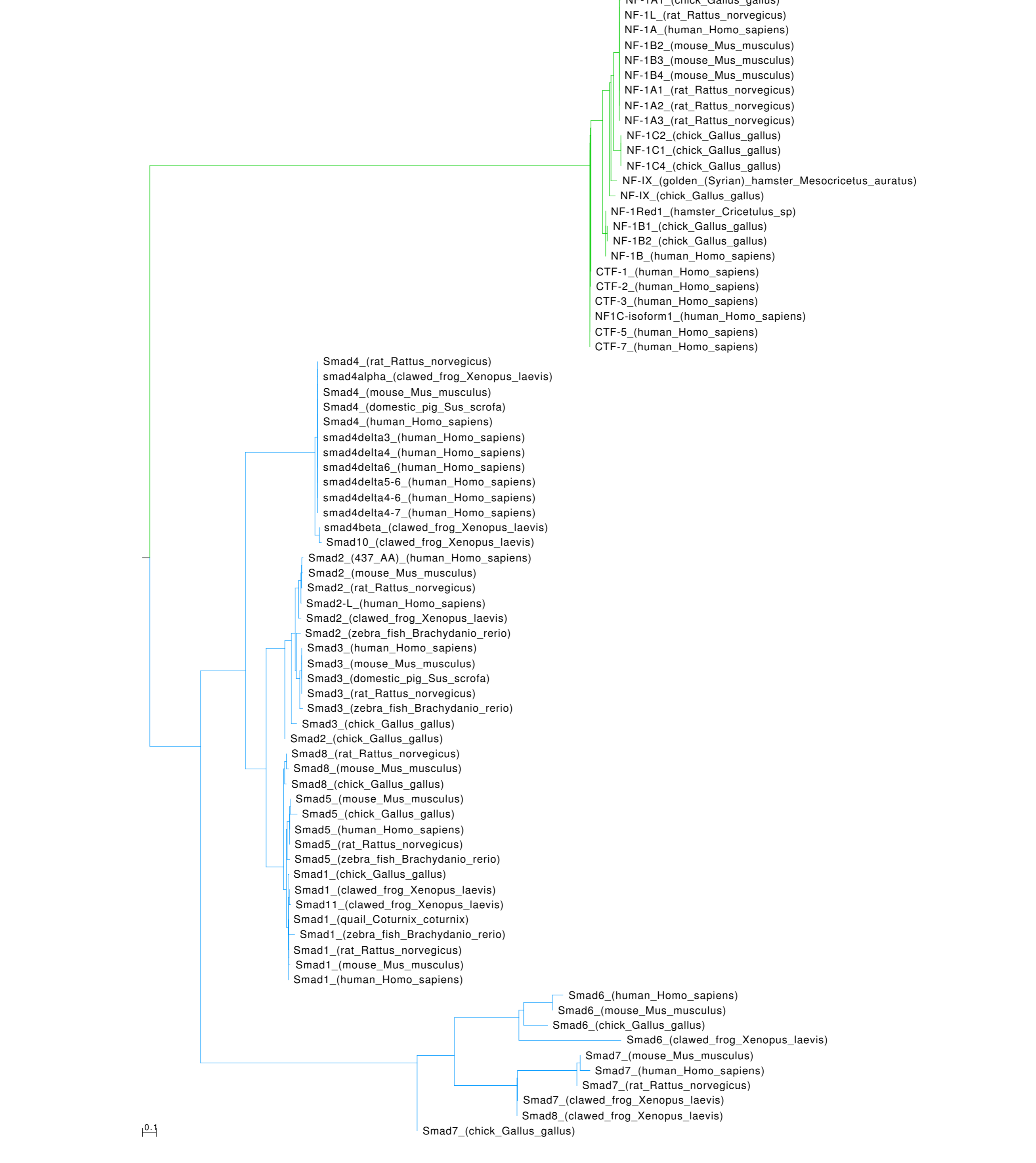
**A. HMG class**



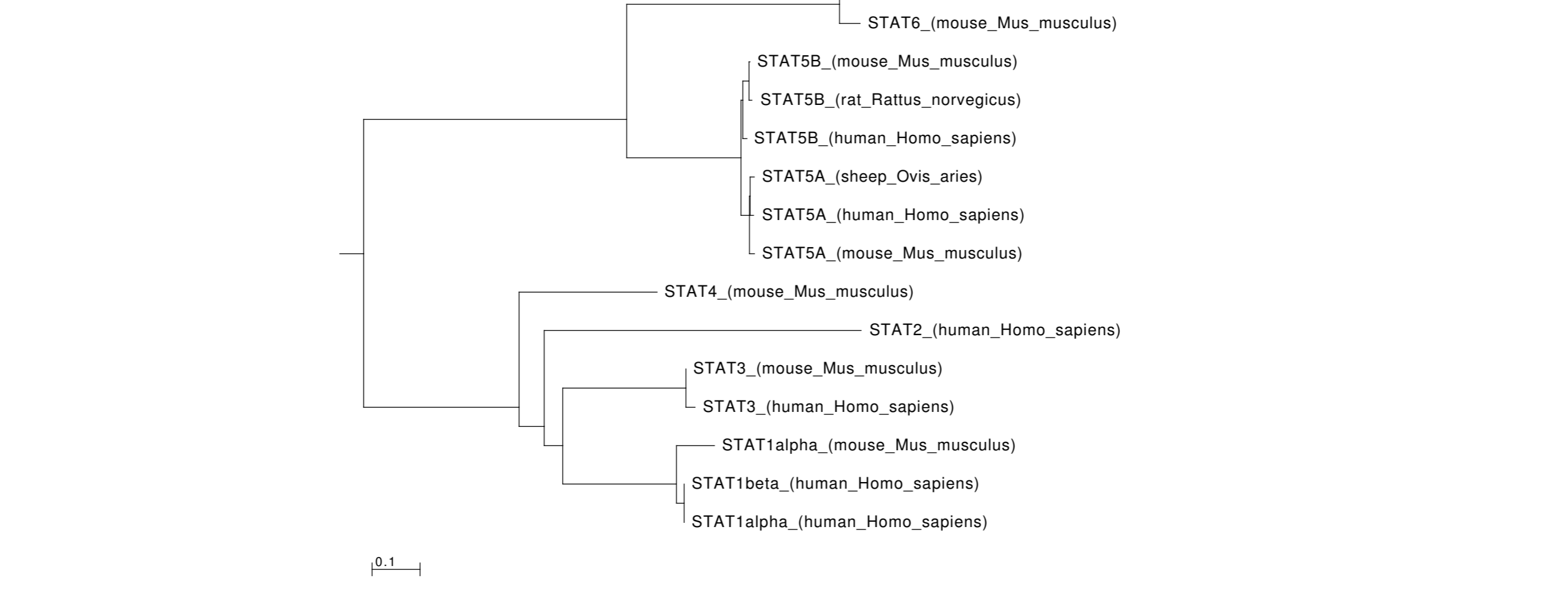
**B. MADS class**



**C. SMAD class**



**D. STAT class**



**E. m2match clustering of Transfac STAT motifs**

