

Supporting Information for

Antiproliferative Withanolides from *Datura wrightii*

Huaping Zhang,[†] Joseph Bazzill,[‡] Robert J. Gallagher,[†] Chitra Subramanian,[‡] Patrick T. Grogan,[‡]

|| Victor W. Day,[§] Mark S. Cohen,[‡] Kelly Kindscher,[⊥] and Barbara N. Timmermann^{*,†}

[†] *Department of Medicinal Chemistry, School of Pharmacy, University of Kansas, Lawrence, KS 66045, USA*

[‡] *Division of Endocrine Surgery, Department of Surgery, University of Michigan Hospital and Health Systems, Ann Arbor, MI 48109, USA*

|| *Department of Pharmacology, School of Medicine, University of Kansas Medical Center, Kansas City, KS 66160, USA*

[§] *The Small-Molecule X-ray Crystallography Laboratory, University of Kansas, Lawrence, KS 66047, USA*

[⊥] *Kansas Biological Survey, University of Kansas, Lawrence, Kansas 66047, USA*

* Corresponding Author. Tel: +01-785-864-4844. Fax: +01-785-864-5326. E-mail address:

btimmer@ku.edu (B. N. T.)

Special Issue in Honor of Lester A. Mitscher

Table of Contents

S0 Structures of withanolides **1-5** isolated from *Datura wrightii*

S1(a) ^1H NMR spectrum of withawrightolide (**1**) in CDCl_3 (500 MHz)

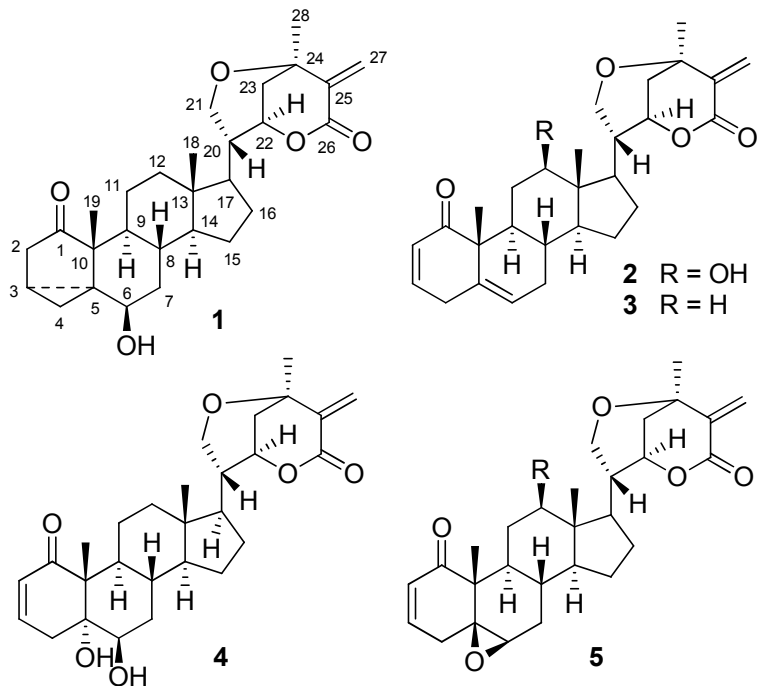
S1(b) ^{13}C APT spectrum of withawrightolide (**1**) (125 MHz)

S1(c) ^1H - ^1H COSY spectrum of withawrightolide (**1**)

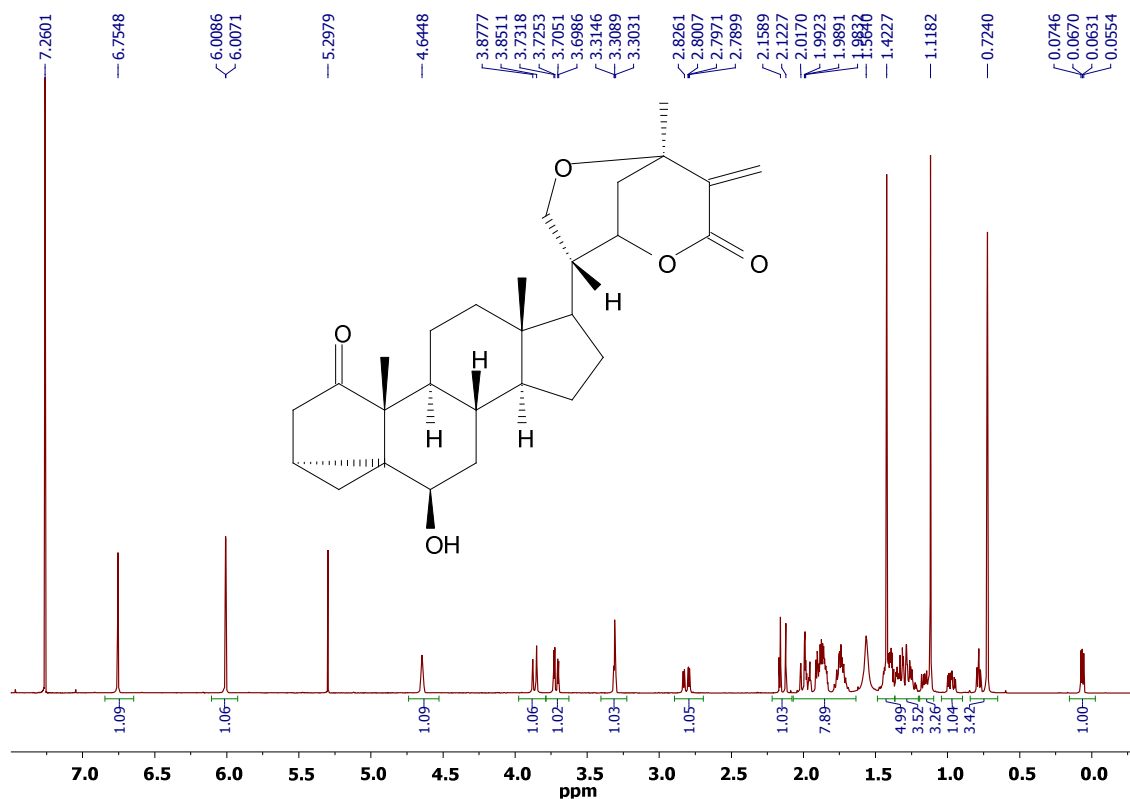
S1(d) HSQC spectrum of withawrightolide (**1**)

S1(e) HMBC spectrum of withawrightolide (**1**)

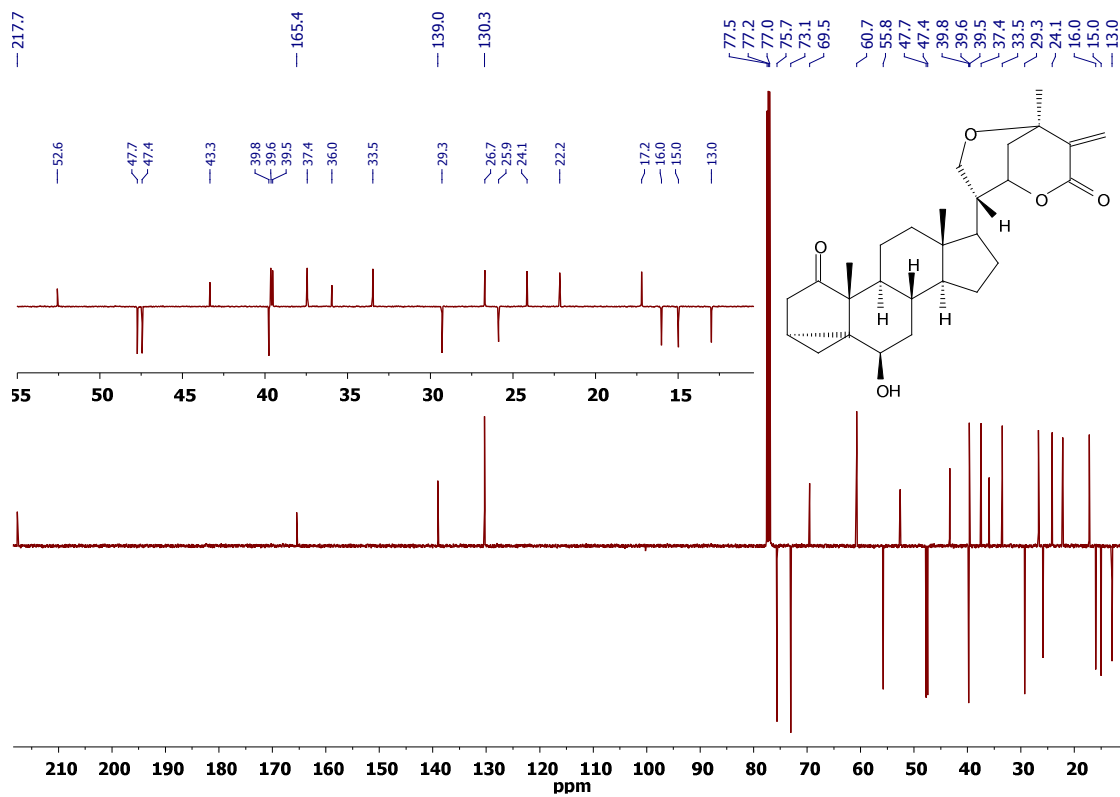
S1(f) ROESY spectrum of withawrightolide (**1**)



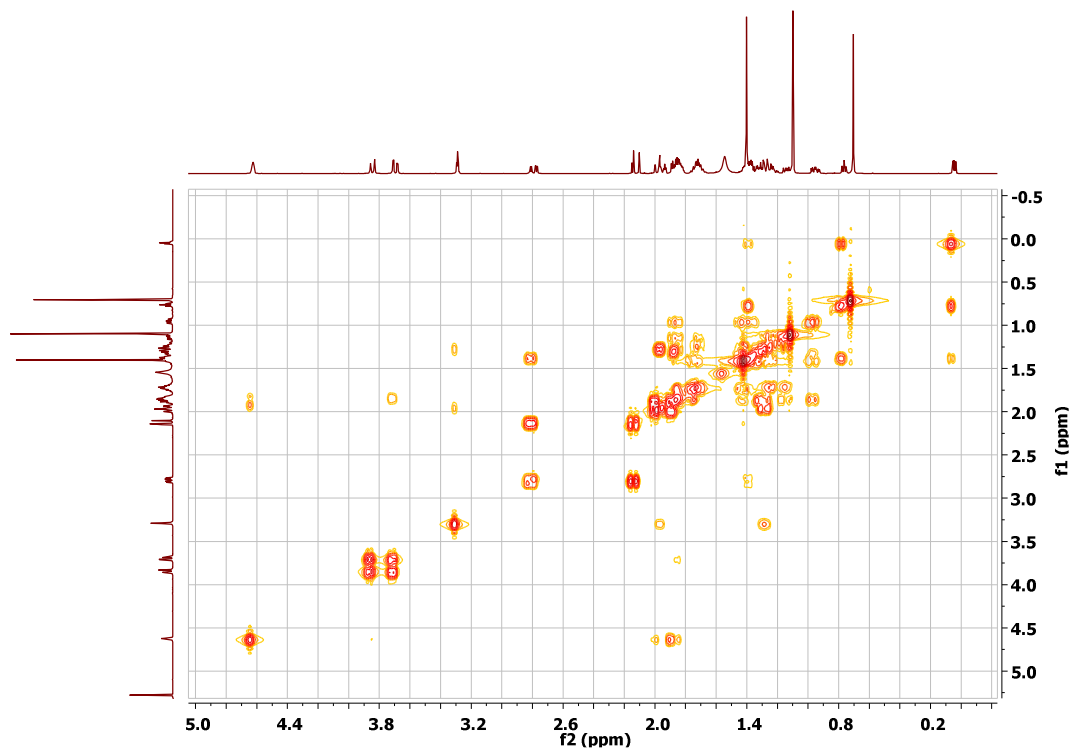
S0 Structures of withanolides **1-5** isolated from *Datura wrightii*



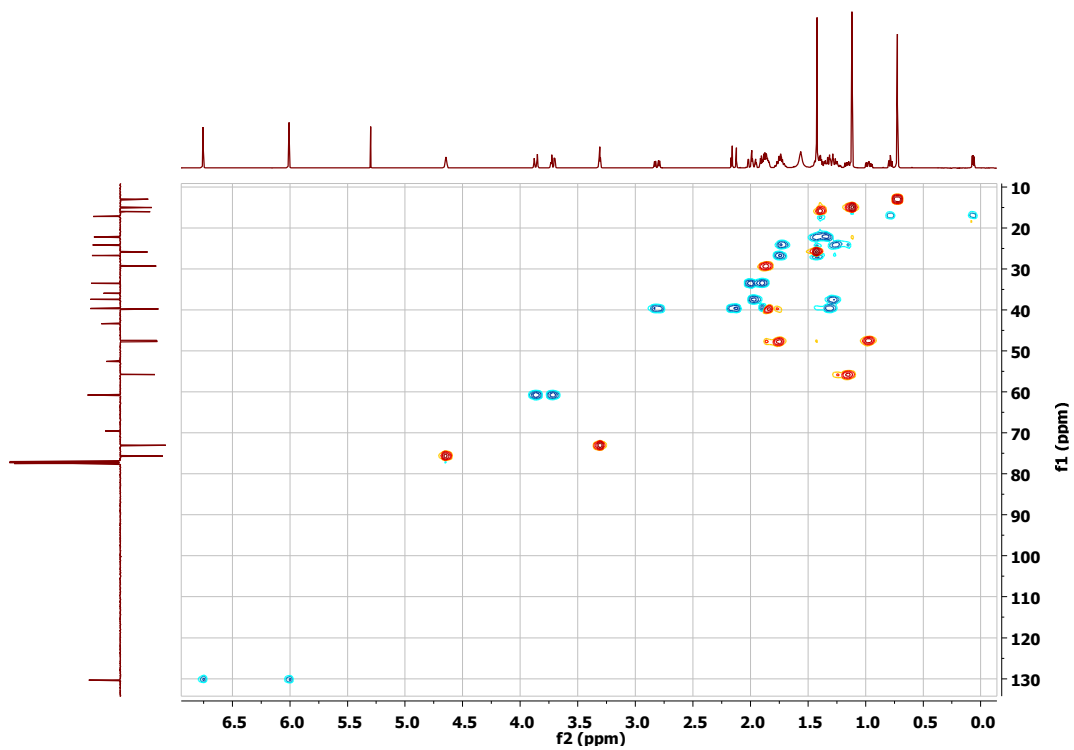
S1(a) ^1H NMR spectrum of withawrightolide (**1**) in CDCl_3 (500 MHz)



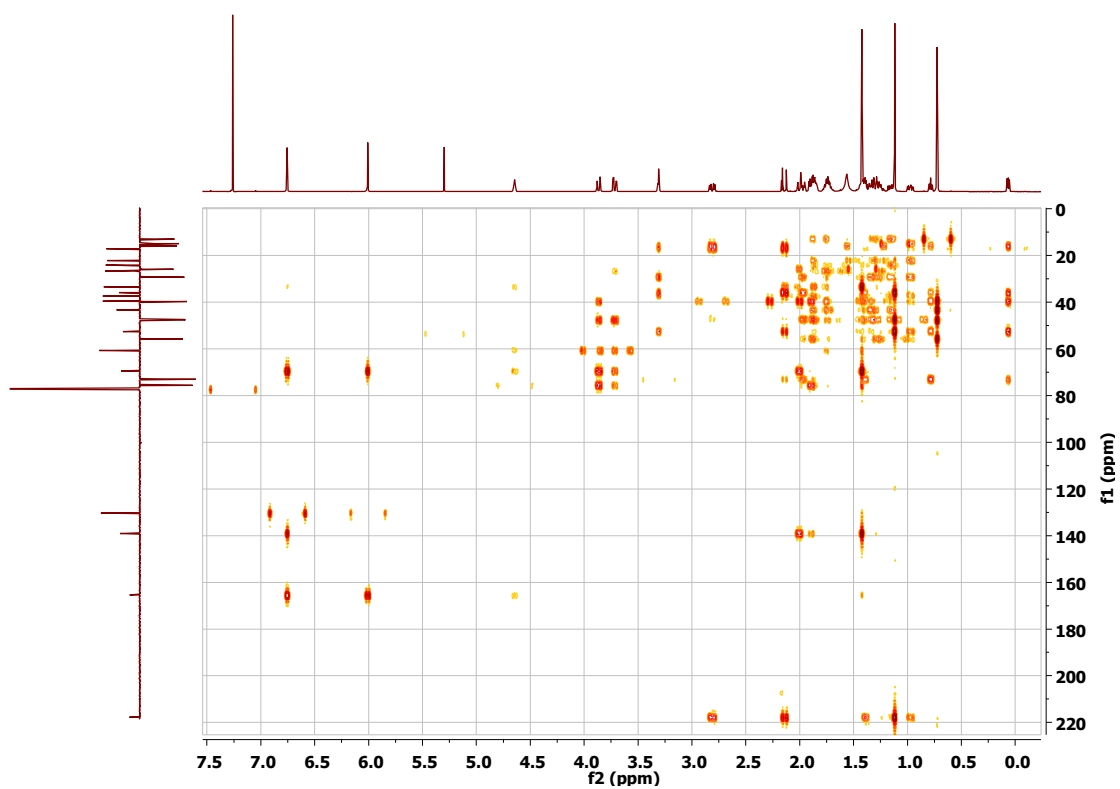
S1(b) ^{13}C APT spectrum of withawrightolide (1) (125 MHz)



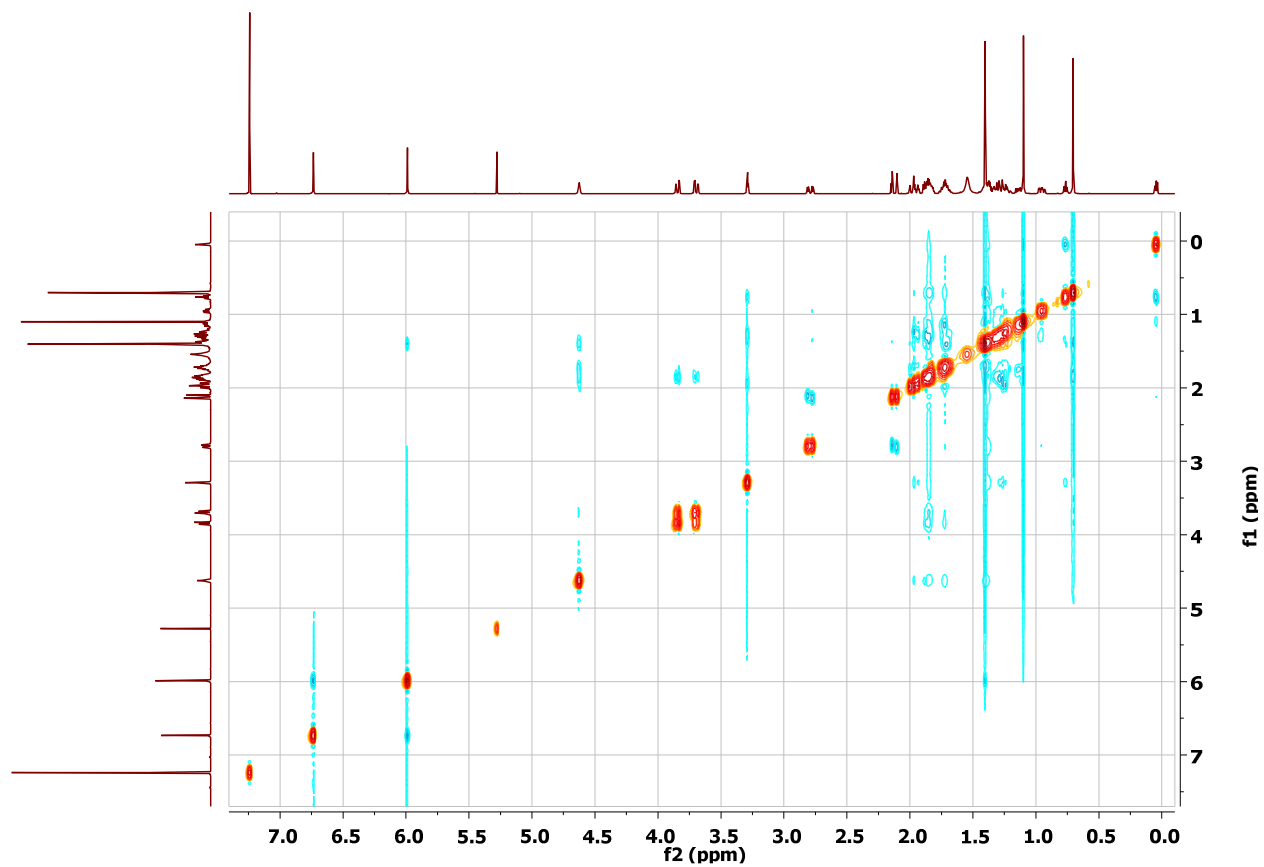
S1(c) ^1H - ^1H COSY spectrum of withawrightolide (1)



S1(d) HSQC spectrum of withawrightolide (1)



S1(e) HMBC spectrum of withawrightolide (1)



S1(f) ROESY spectrum of withawrightolide (1)