

Supporting Information

Salgado-Pabón et al. 10.1073/pnas.1300981110

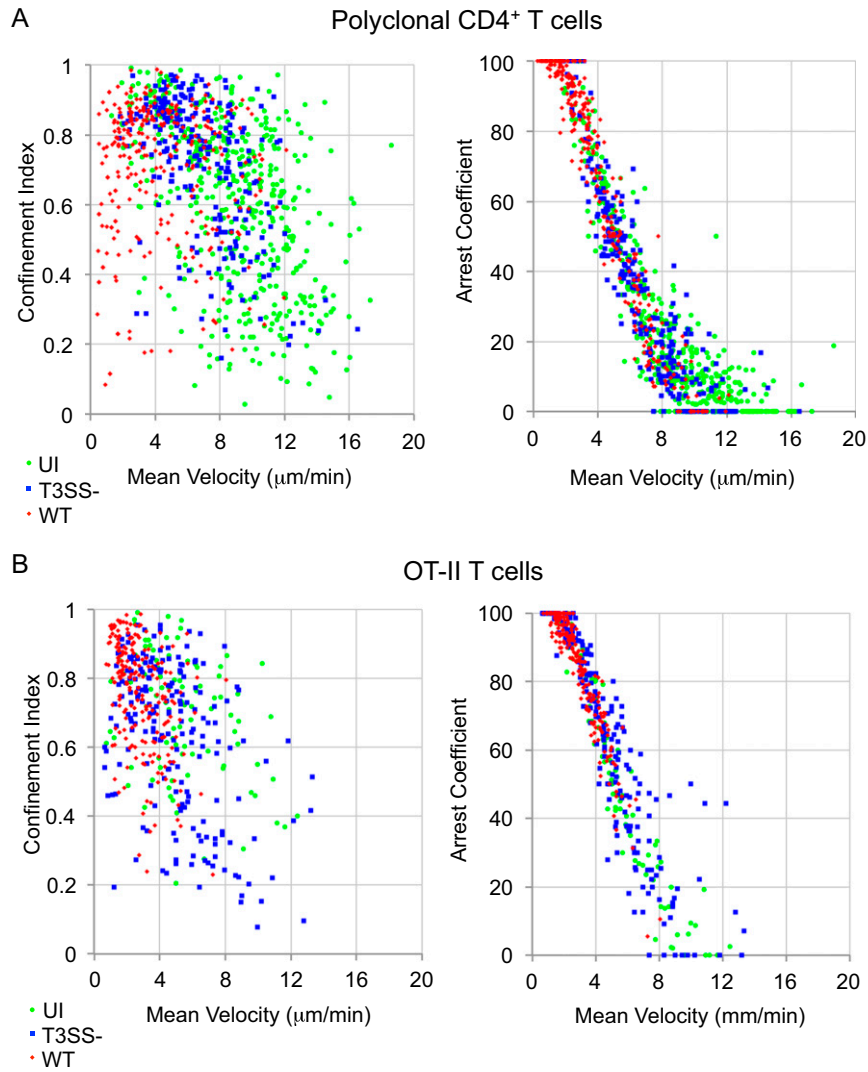
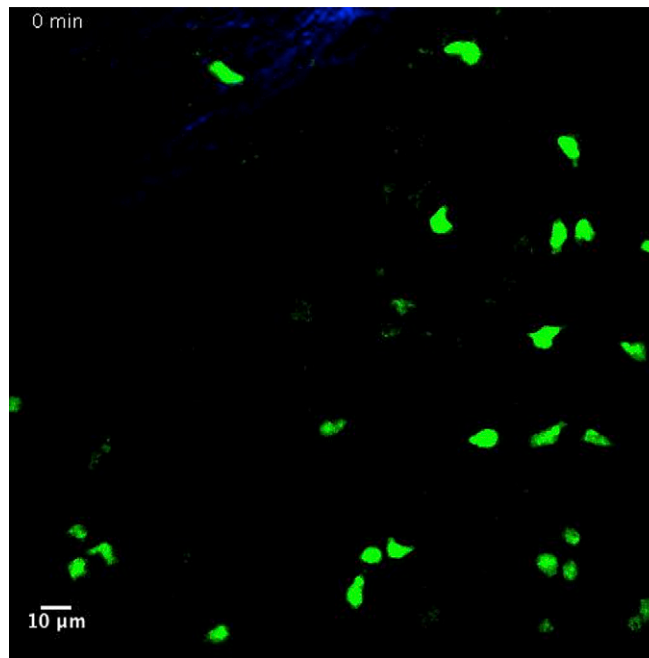
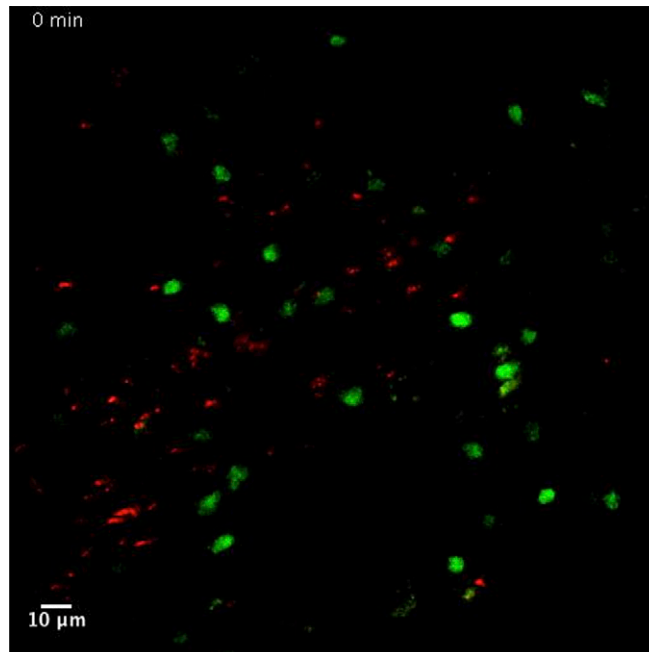


Fig. S1. Analysis of polyclonal and OT-II CD4⁺ T-cell (ie, CD4⁺ T cells that express a transgenic receptor specific for the antigen ovalbumin) dynamics. (A and B) Individual mean velocity plotted to the corresponding confinement index or arrest coefficient. Each symbol represents an individual cell. (A) Polyclonal CD4⁺ T cells. (B) OT-II T cells.



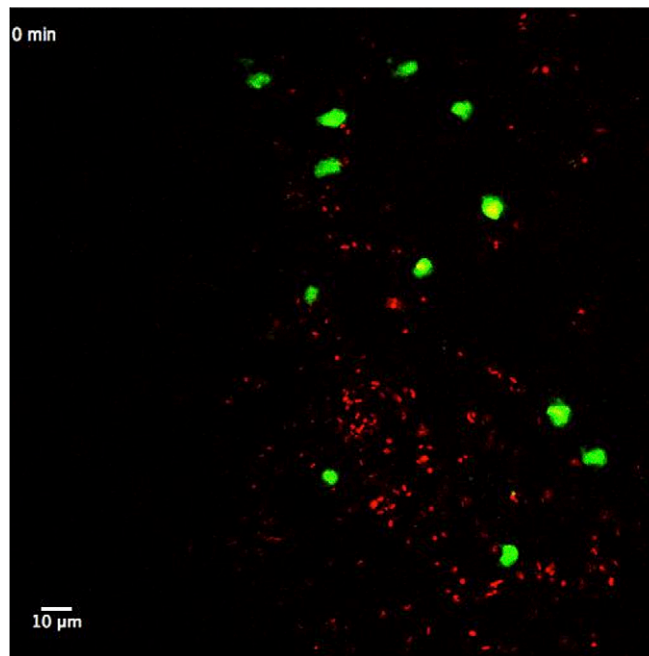
Movie S1. Polyclonal CD4⁺ T-cell motility in uninfected LNs. Dynamic 2PM analysis of carboxyfluorescein succinimidyl ester (CFSE)-labeled CD4⁺ T cells in the SCS region of uninfected intact LNs.

[Movie S1](#)



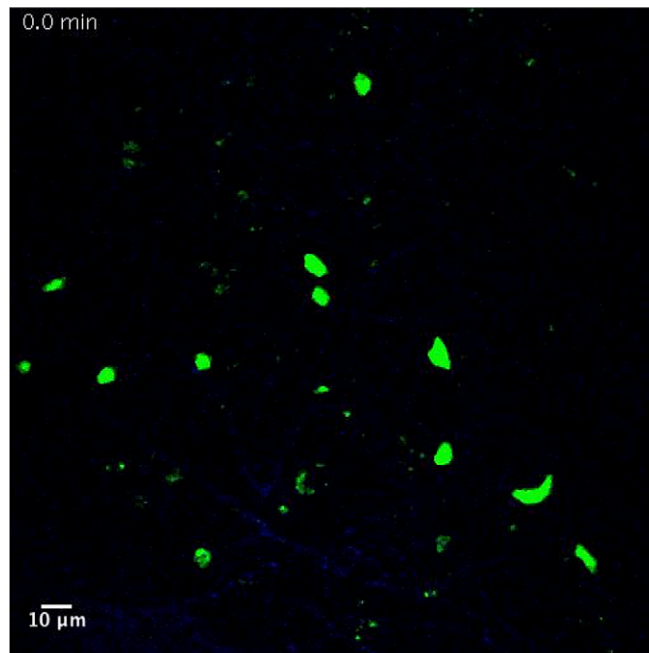
Movie S2. Polyclonal CD4⁺ T-cell motility in T3SS⁻ *S. flexneri*-infected LNs. Dynamic 2PM analysis of CFSE-labeled CD4⁺ T cells in the subcapsular sinus region of intact LNs infected with T3SS⁻ *S. flexneri* 4 h post s.c. inoculation.

[Movie S2](#)



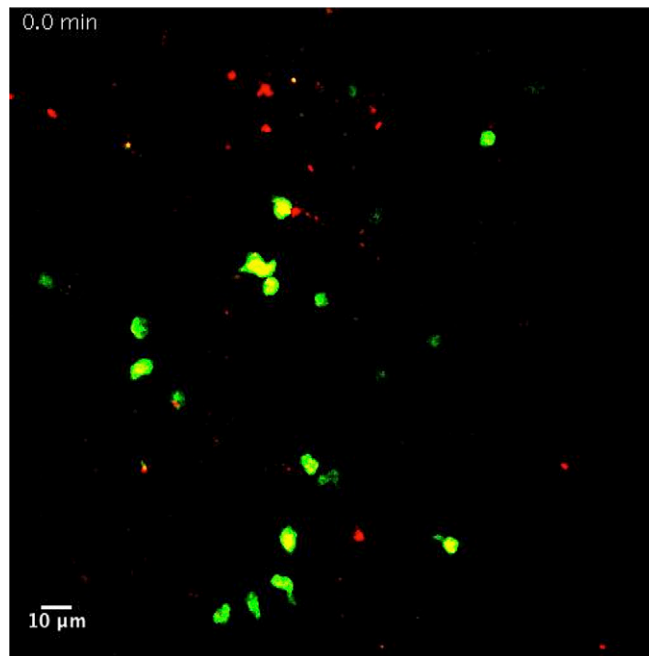
Movie S3. Polyclonal CD4⁺ T-cell motility in WT *S. flexneri*-infected LNs. Dynamic 2PM analysis of CFSE-labeled CD4⁺ T cells in the SCS region of intact LNs infected with WT *S. flexneri* 4 h post s.c. inoculation.

[Movie S3](#)



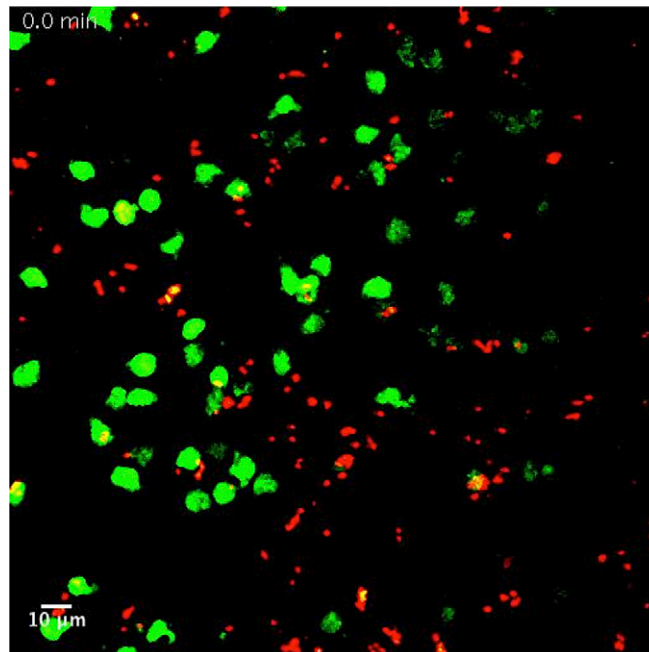
Movie S4. OT-II T-cell motility in uninfected LNs. Dynamic 2PM analysis of CFSE-labeled CD4⁺ T cells in the subcapsular sinus region of uninfected intact LNs.

[Movie S4](#)



Movie S5. OT-II T-cell motility in T3SS⁻ *S. flexneri*-infected LNs. Dynamic 2PM analysis of CFSE-labeled CD4⁺ T cells in the SCS region of intact LNs infected with T3SS⁻ *S. flexneri* 4 h post s.c. inoculation.

[Movie S5](#)



Movie S6. OT-II T-cell motility in WT *S. flexneri*-infected LNs. Dynamic 2PM analysis of CFSE-labeled CD4⁺ T cells in the SCS region of intact LNs infected with WT *S. flexneri* 4 h post s.c. inoculation.

[Movie S6](#)