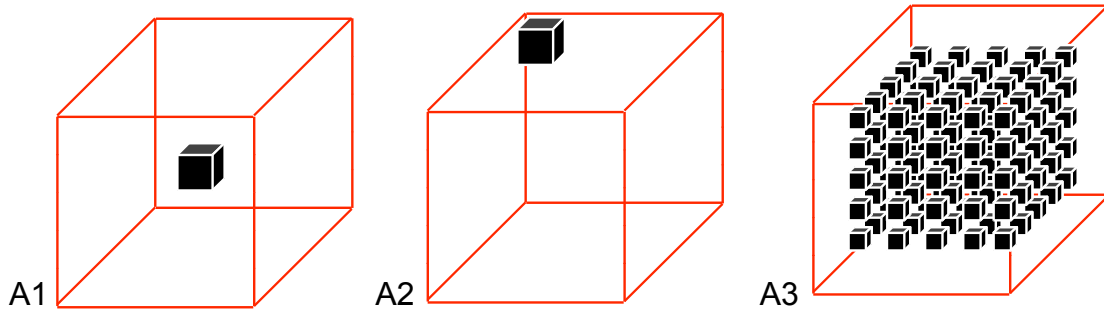


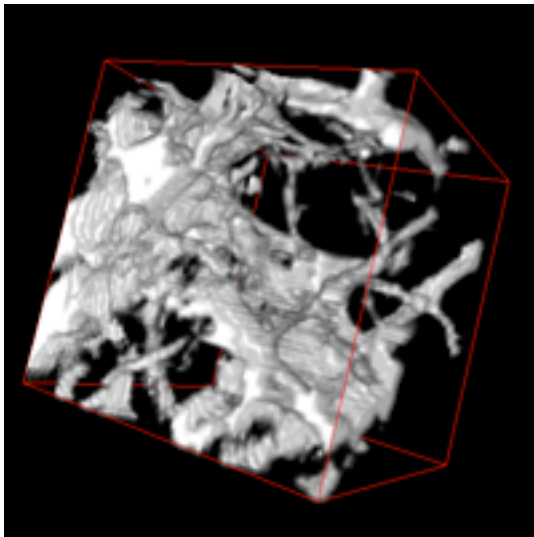
**A**

Voxels: 9x9x9

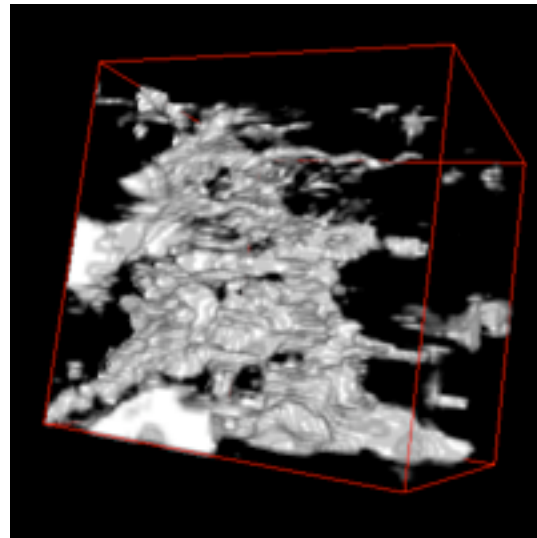
9x9x9

49x49x49

	Manual	ImageJ Macro	ImageJ Plugin
Volume A1	5.40247	5.40250	5.40246
Volume A2	9.56686	9.56690	9.56686
Volume A3	5.68878	5.68880	5.68877
Volume B1	ND	19.71170	19.71173
Volume B2	ND	19.37880	19.37884

**B**

B1



B2

Voxels: 128x128x128

128x128x128

**Figure S6. Panel A** Validation of ImageJ routines for space-filling calculations on artificial point distributions. The values of nHv 90% for the 3 artificial point distributions shown were

calculated manually and then compared with those obtained with an ImageJ plugin and an ImageJ macro as internal control. Values, shown in the accompanying table, appeared identical if not for different levels of approximation.

**Panel B** The values of the 2 additional binary distributions, shown as black and white renderings, were calculated by both the ImageJ plugin and the ImageJ macro, providing results differing only because of different levels of approximation. This procedure was necessary because the ImageJ macro, whose operations could be followed visually in a step by step basis, served as a control of the results of the plugin on volumes whose nHv values could not be calculated manually.