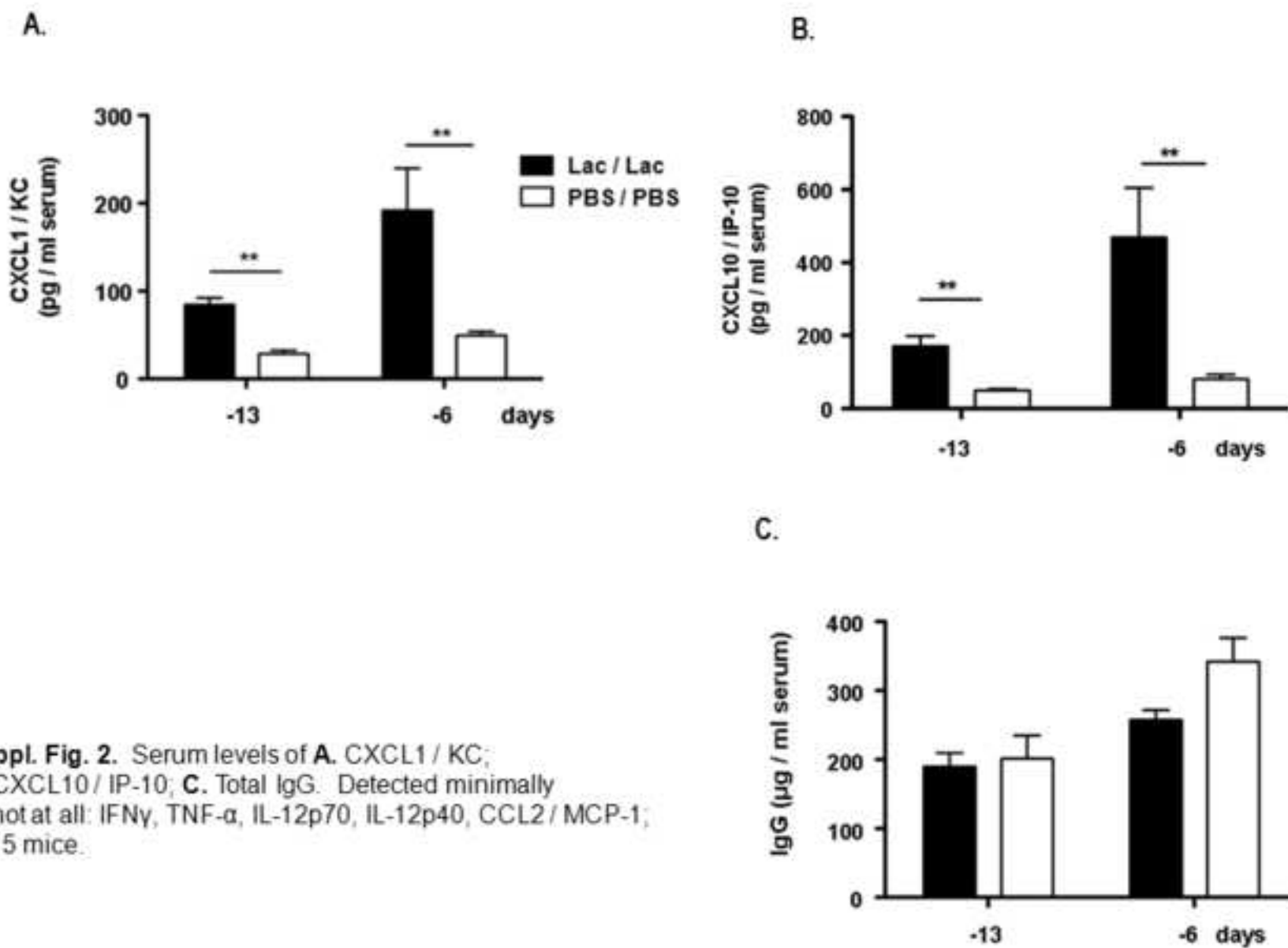
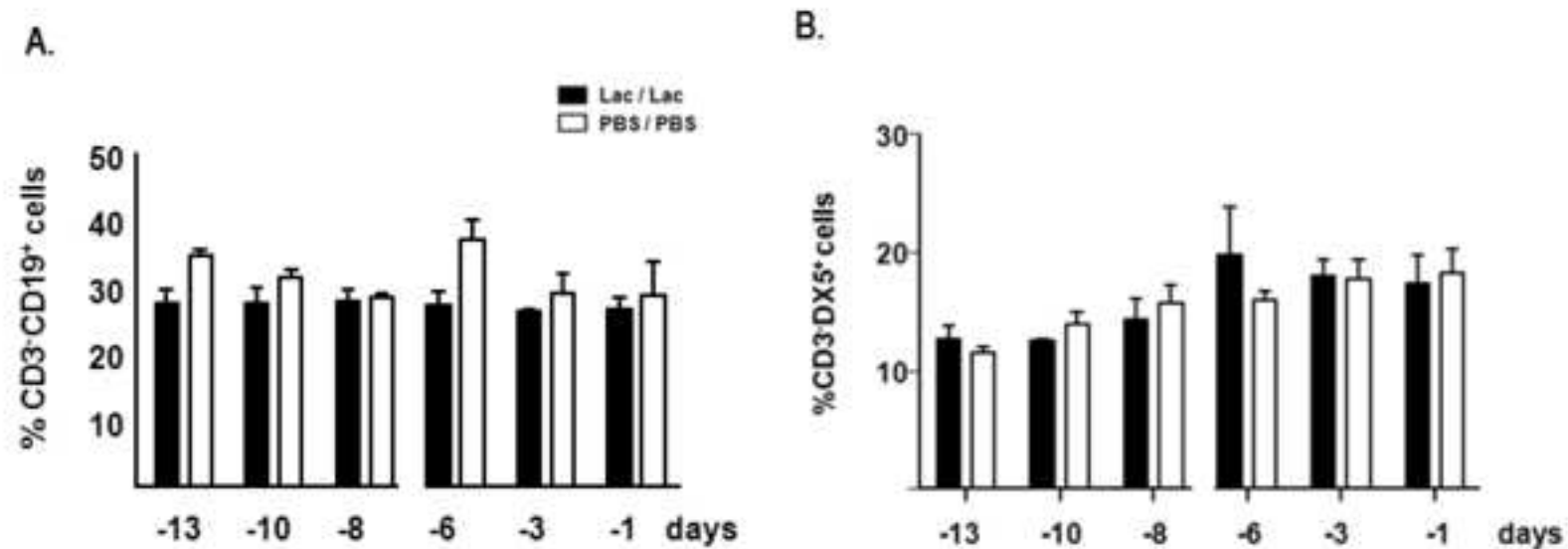


Suppl. Fig. 1. Standard curves (A_{650} vs. time) used to detect peptidoglycan (PGN) in whole lung homogenates using the silkworm larvae plasma (SLP) method as per Inada et al. [2003]. A standard PGN dilution series (Wako; Richmond, VA) was evaluated as shown; concentrations of unknowns were calculated via linear regression of the logarithmic plot of time to the midpoint of the linear range vs. concentration; midpoint shown here, $A_{650} = 0.4$.



Suppl. Fig. 2. Serum levels of **A.** CXCL1 / KC; **B.** CXCL10 / IP-10; **C.** Total IgG. Detected minimally or not at all: IFN γ , TNF- α , IL-12p70, IL-12p40, CCL2 / MCP-1; n = 5 mice.



Suppl. Fig. 3. Cells from whole lung evaluated by flow cytometry, as shown, % cells within the lymphocyte gate. **A.** % B cells (CD3-CD19*); **B.** % NK cells (CD3-DX5*)