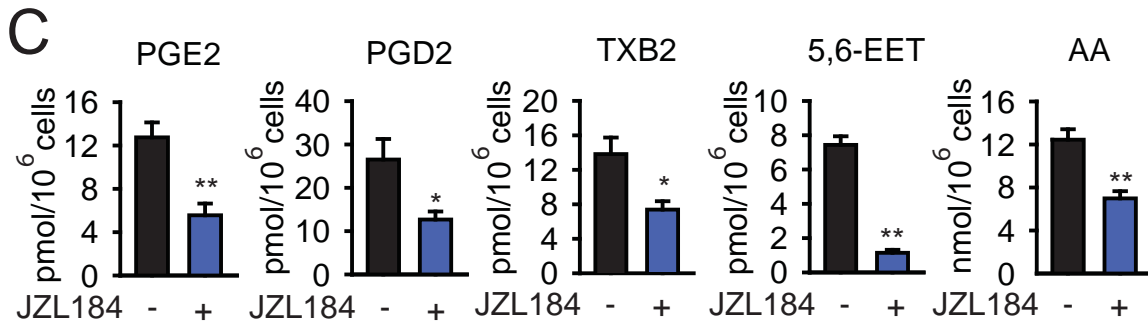
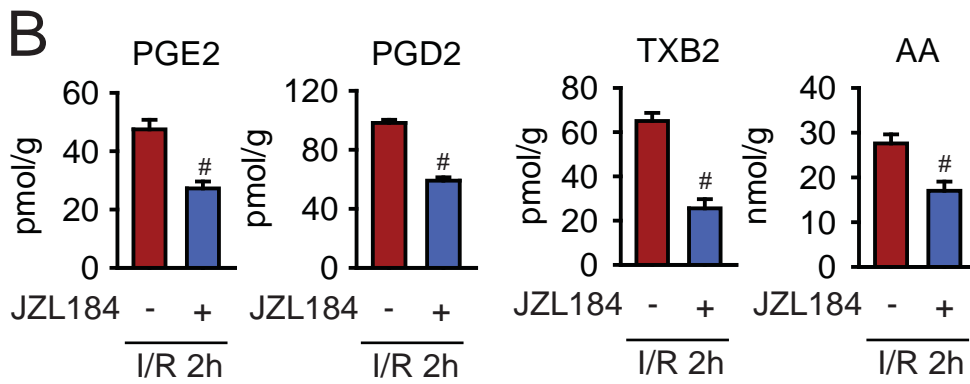
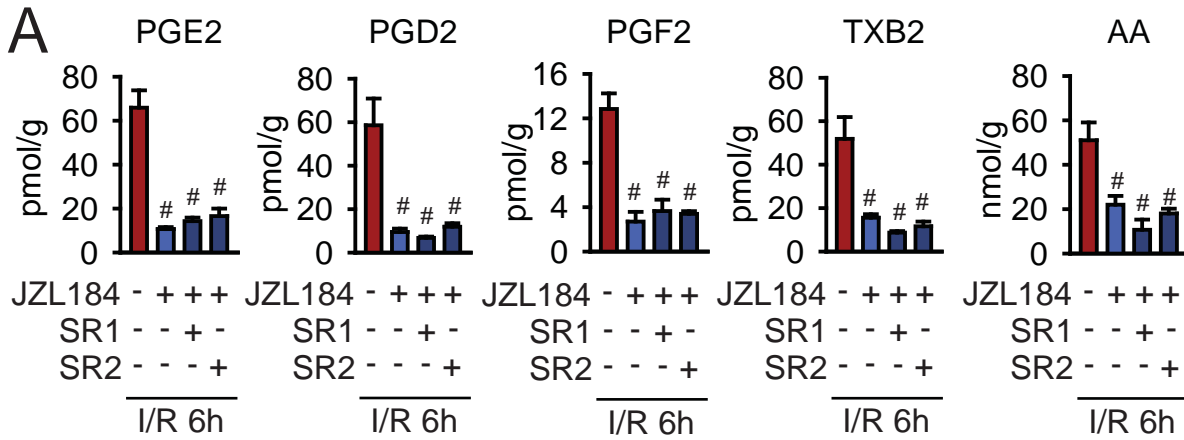
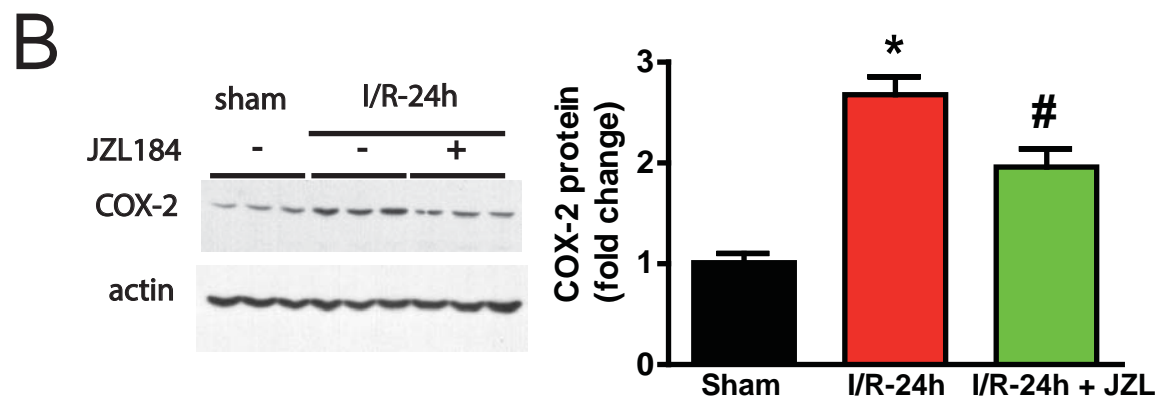
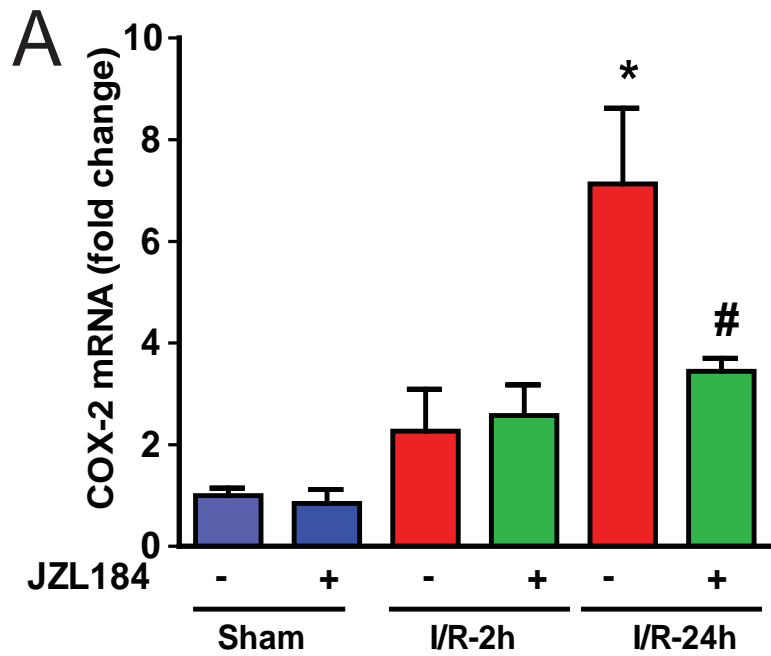


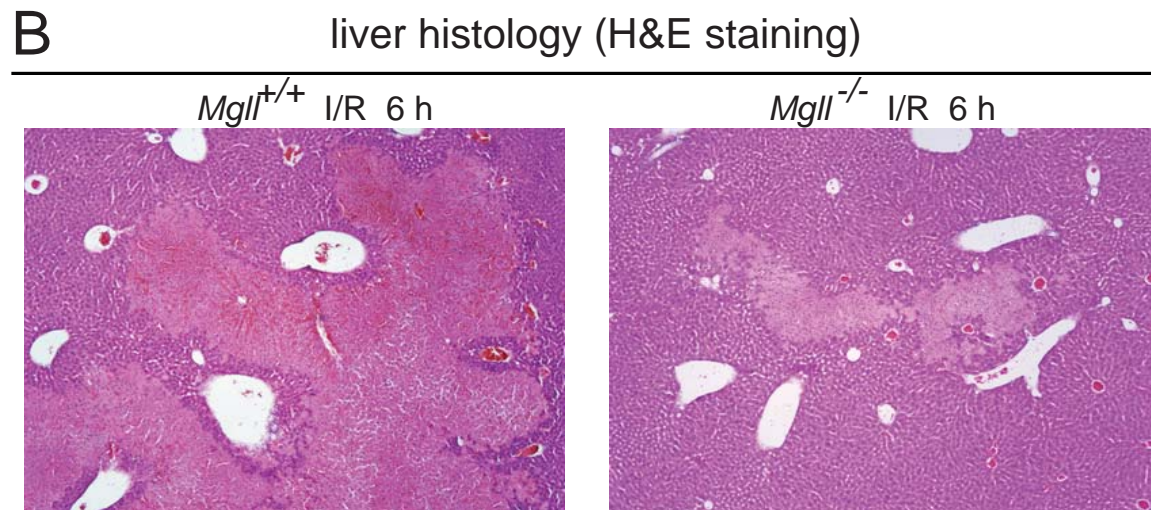
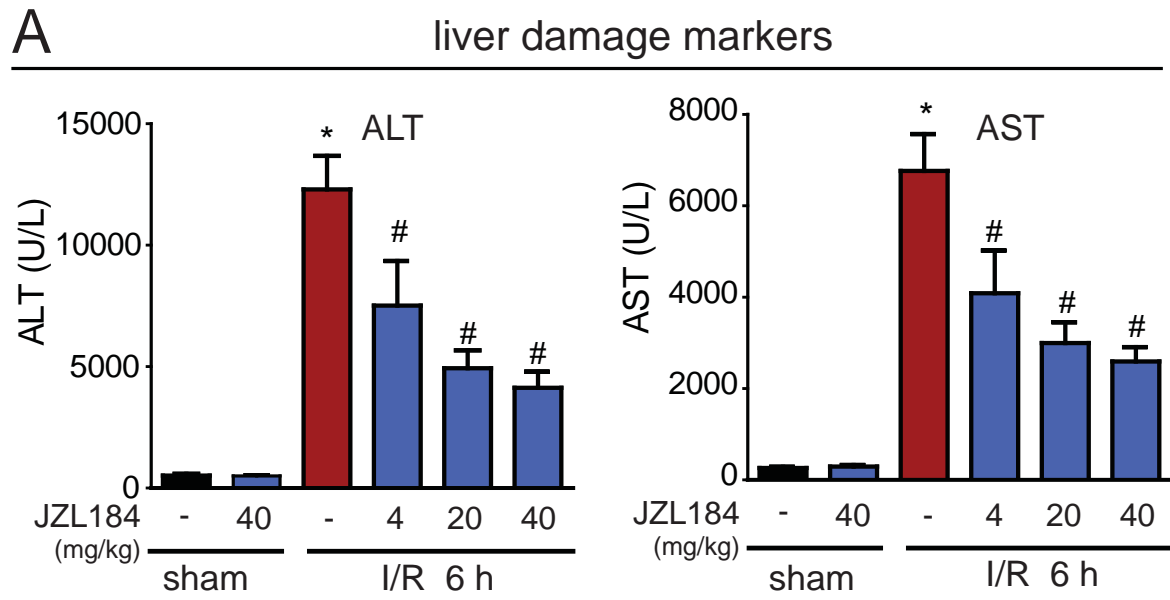
Suppl. Figure 1



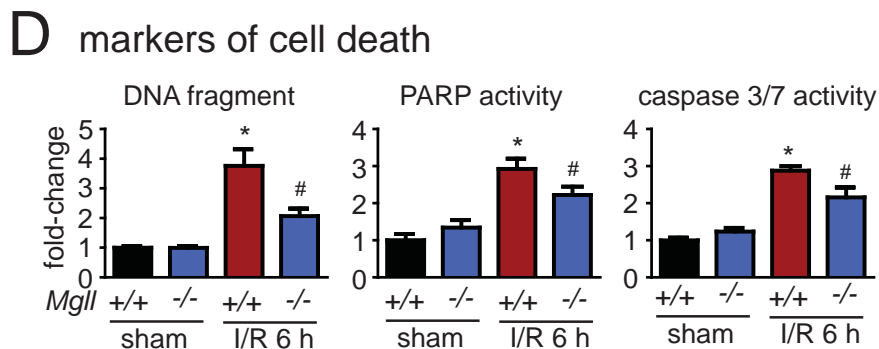
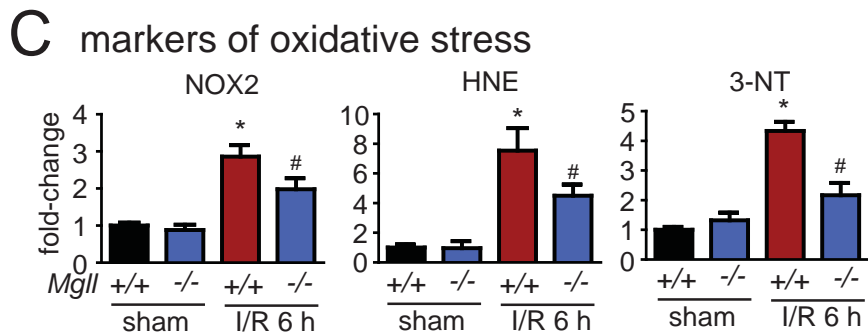
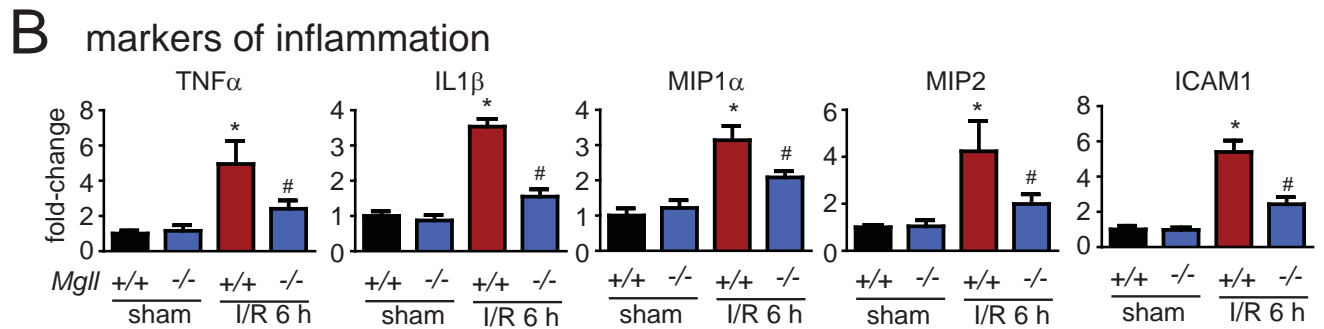
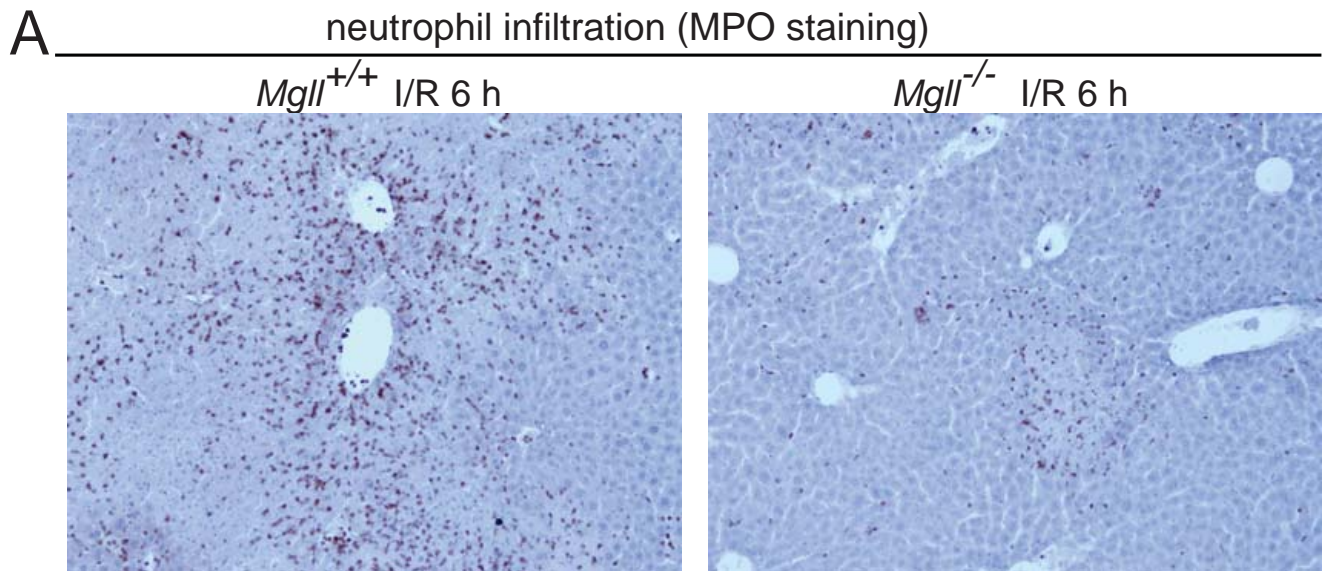
Suppl. Figure 2



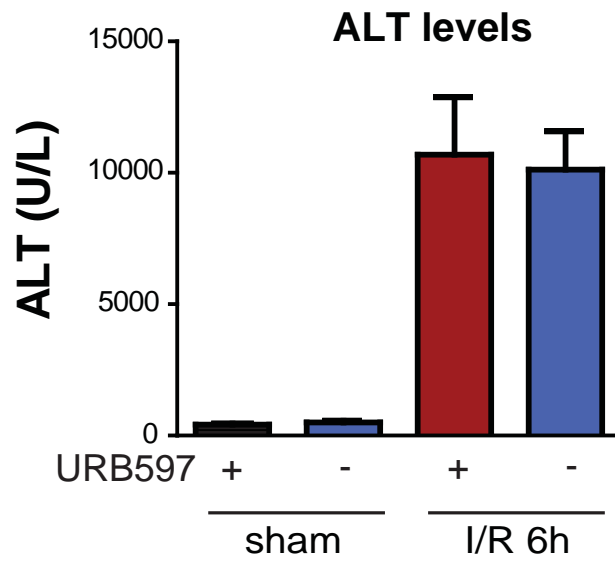
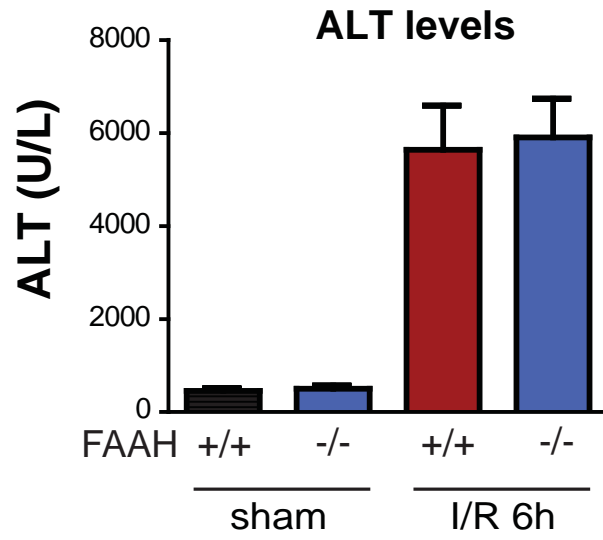
Suppl. Figure 3



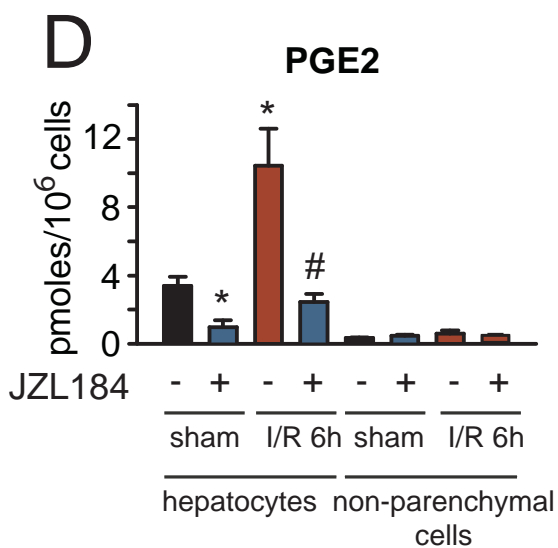
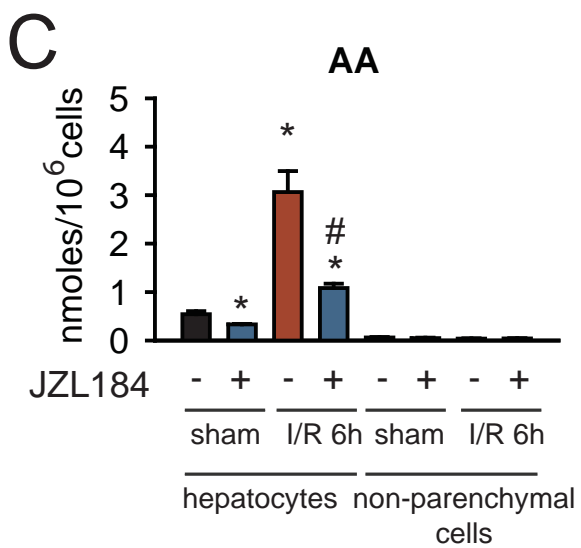
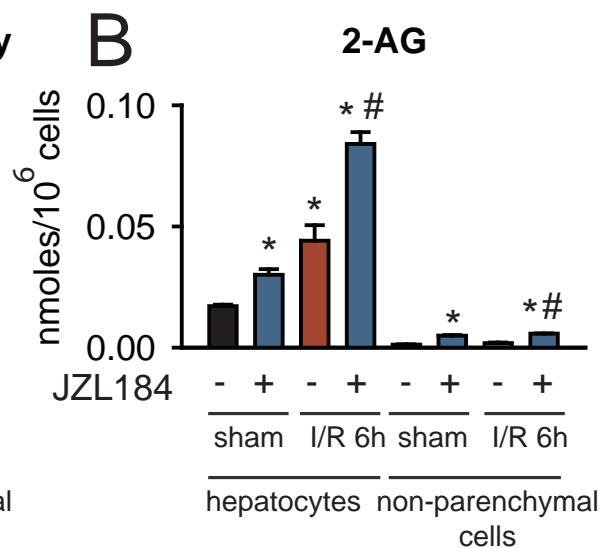
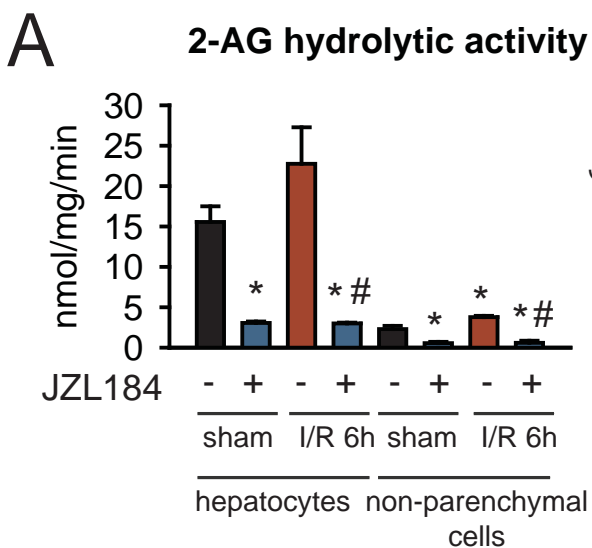
Suppl. Figure 4



Suppl. Figure 5



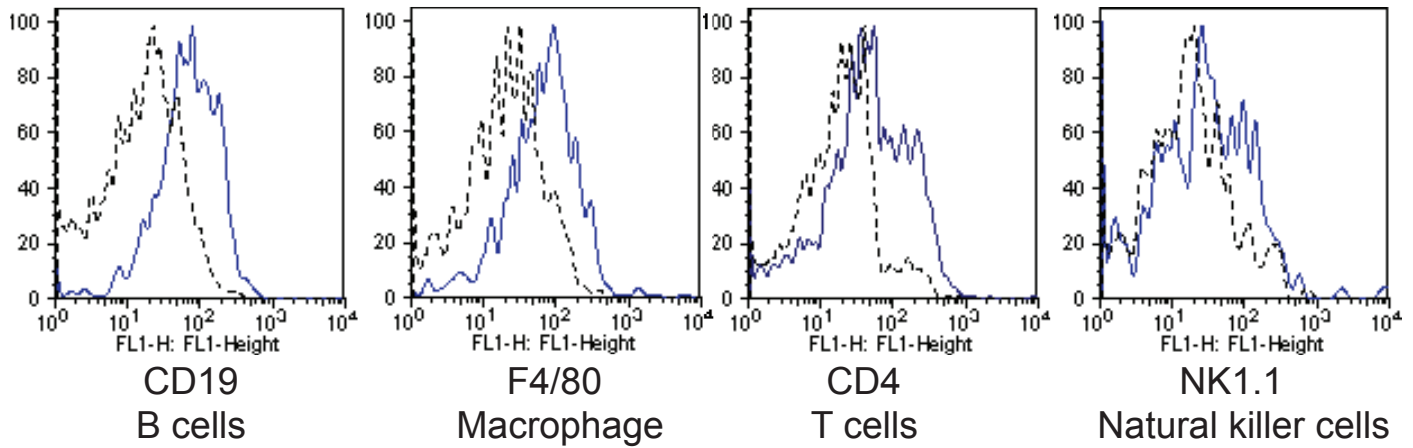
Suppl Figure 6



Suppl. Figure 7

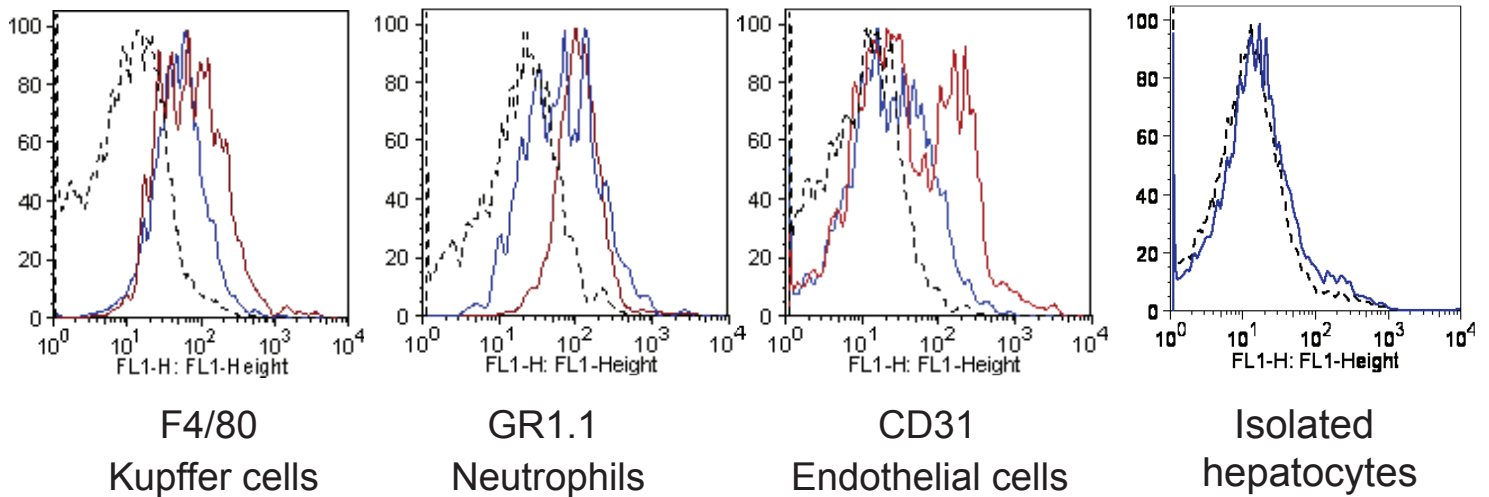
Spleen

---- cells without antibody
 — CB₂ antibody

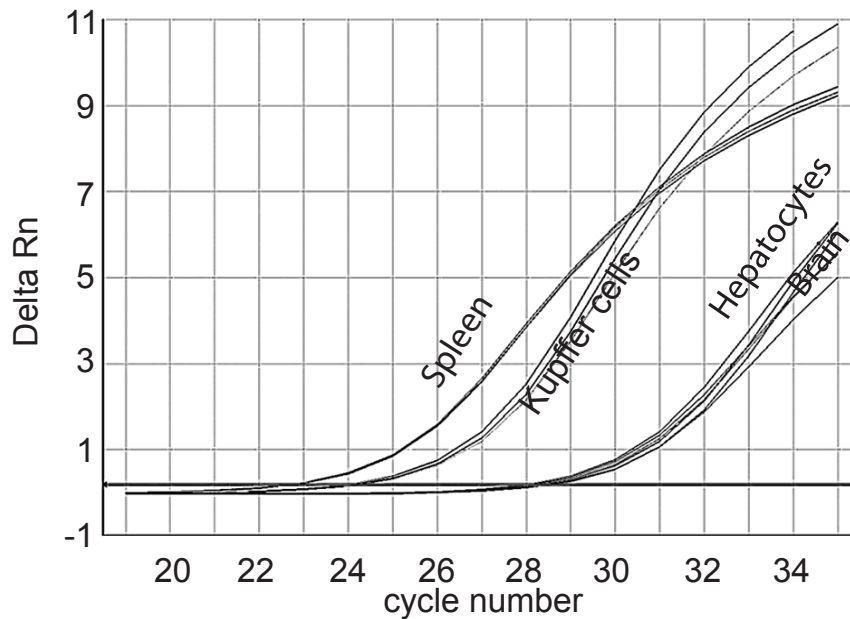


Liver

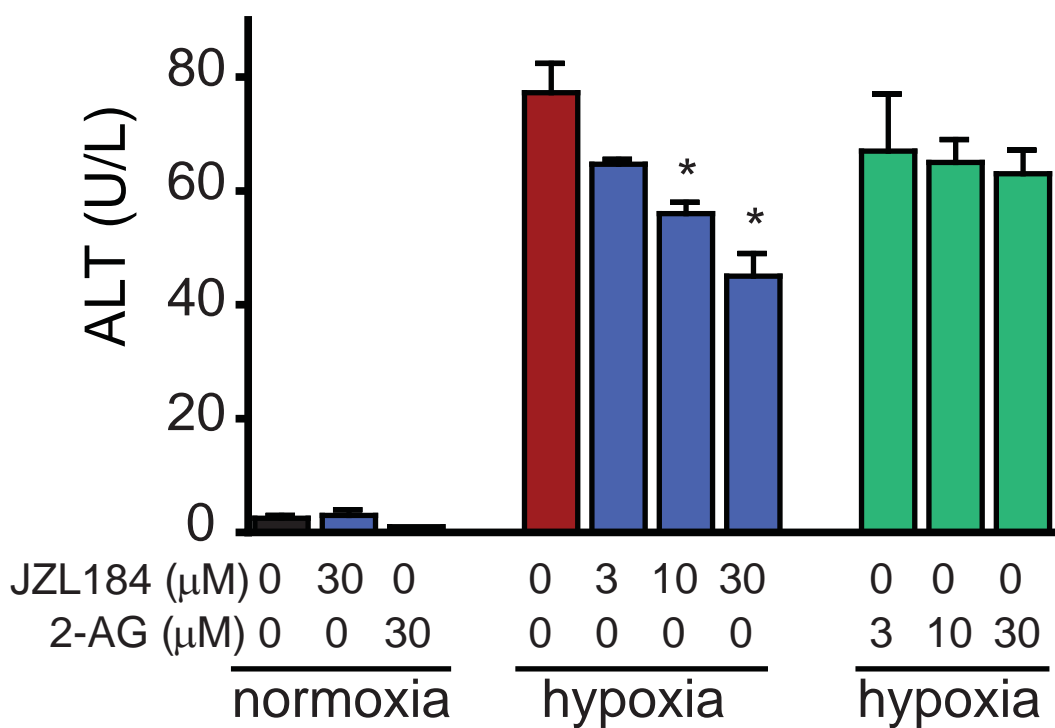
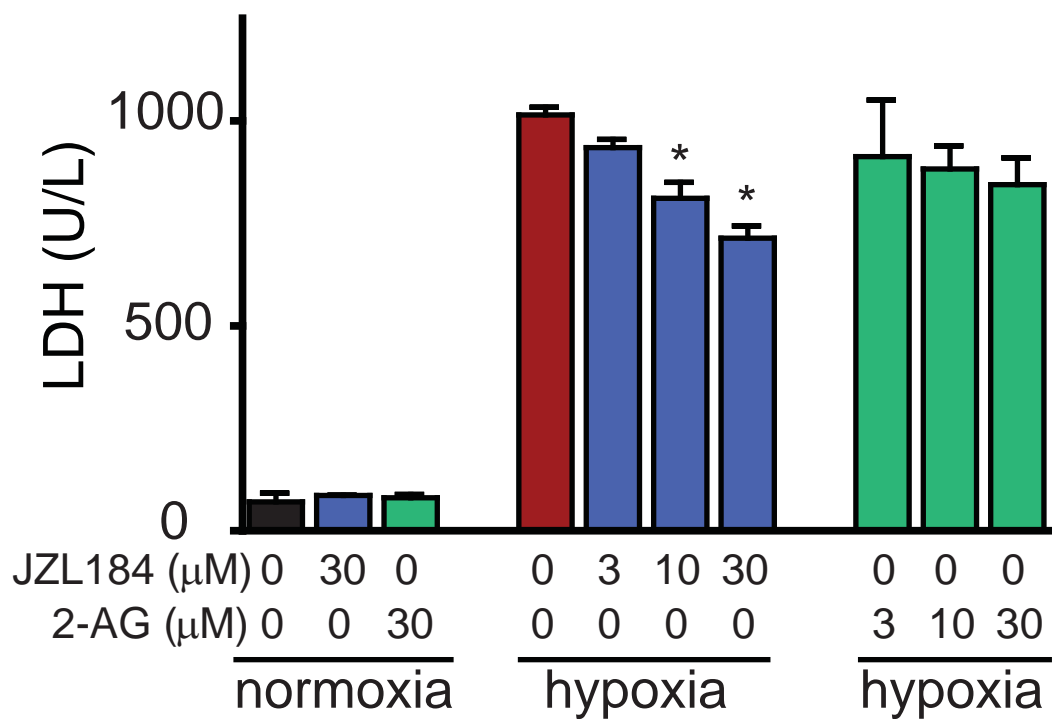
---- cells without antibody — sham CB₂ antibody
 — 6h ischemia/reperfusion CB₂ antibody



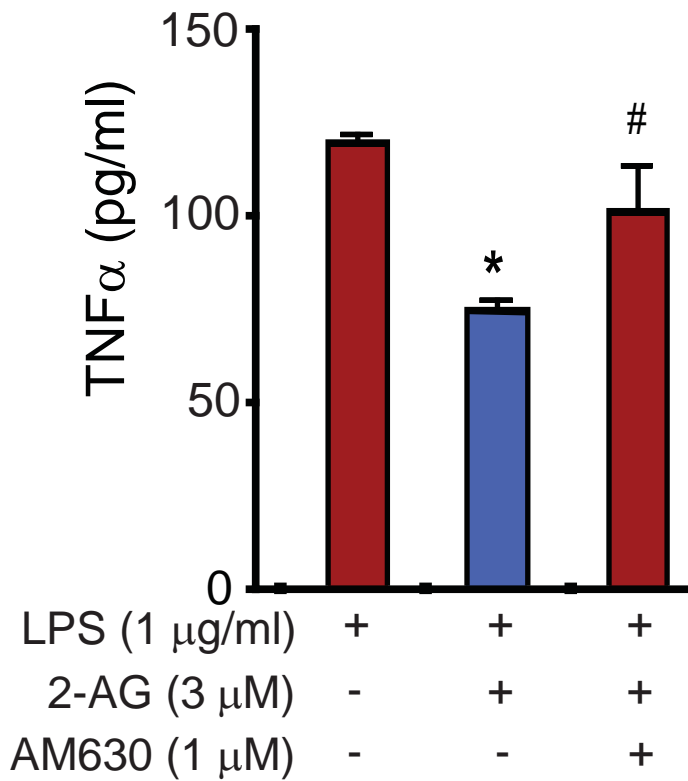
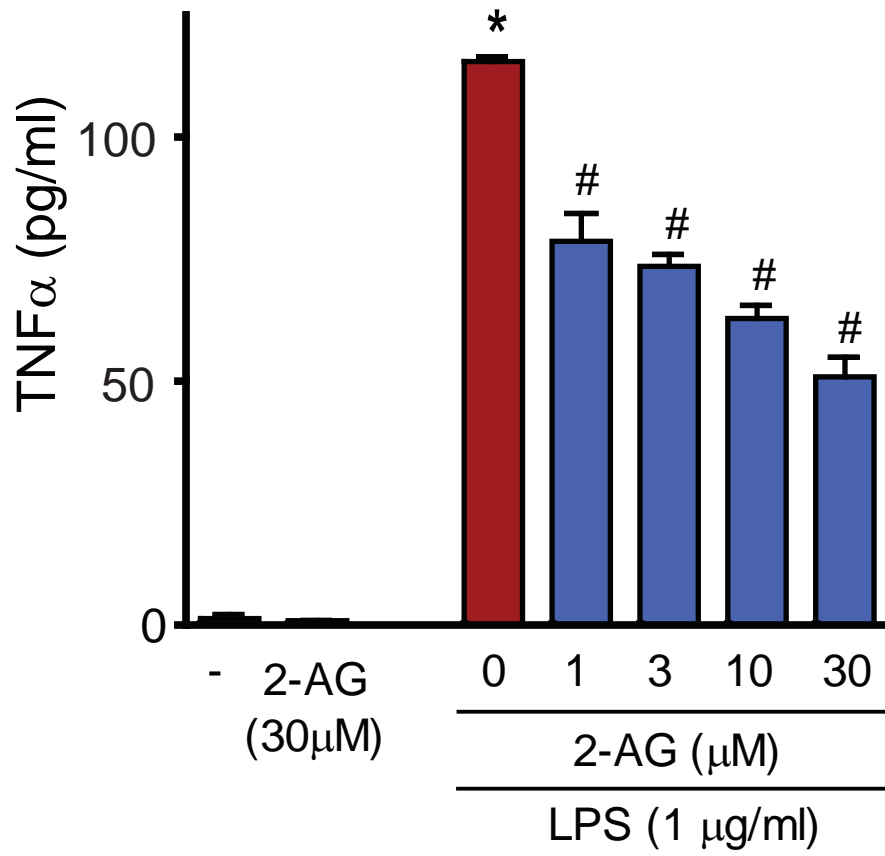
CB2 mRNA



Suppl. Figure 8

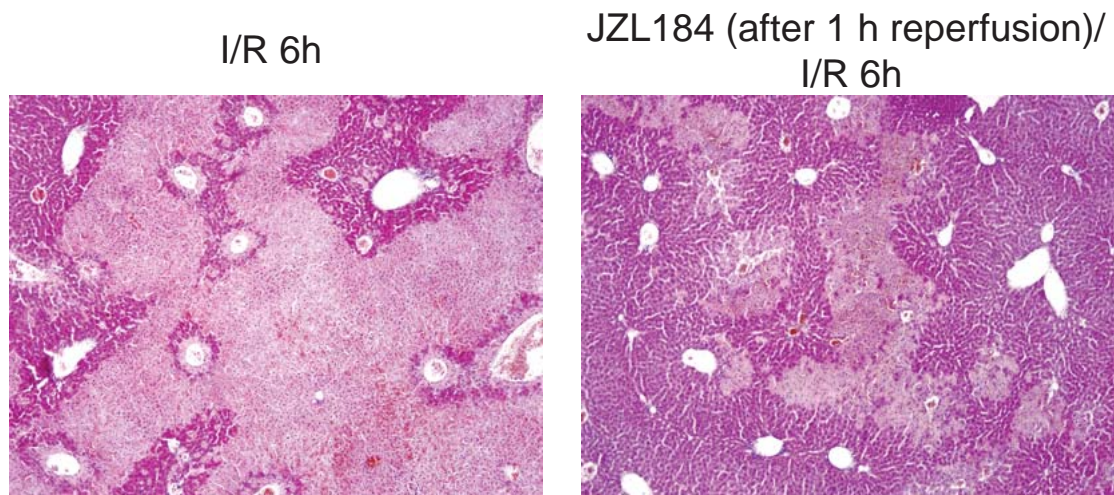


Suppl. Figure 9

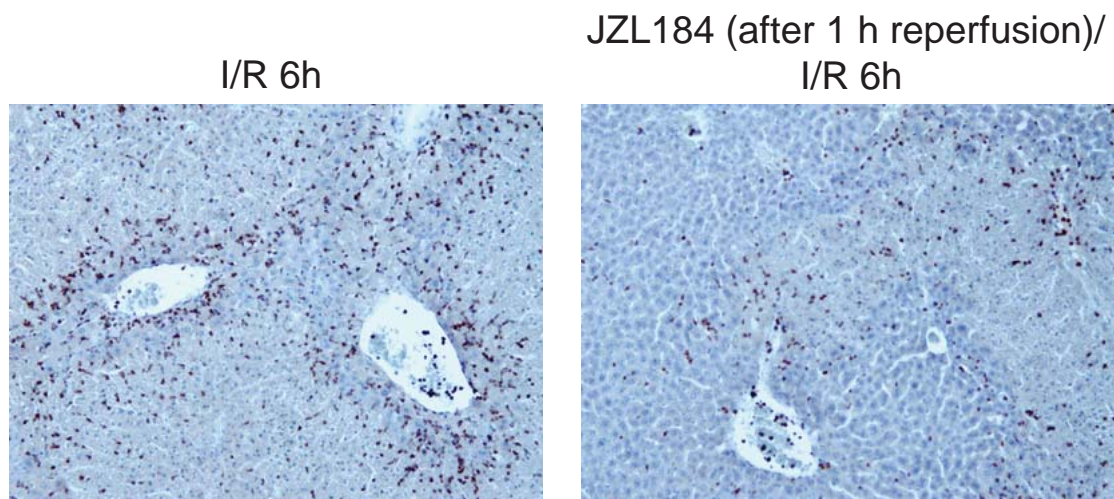


Suppl. Figure 10

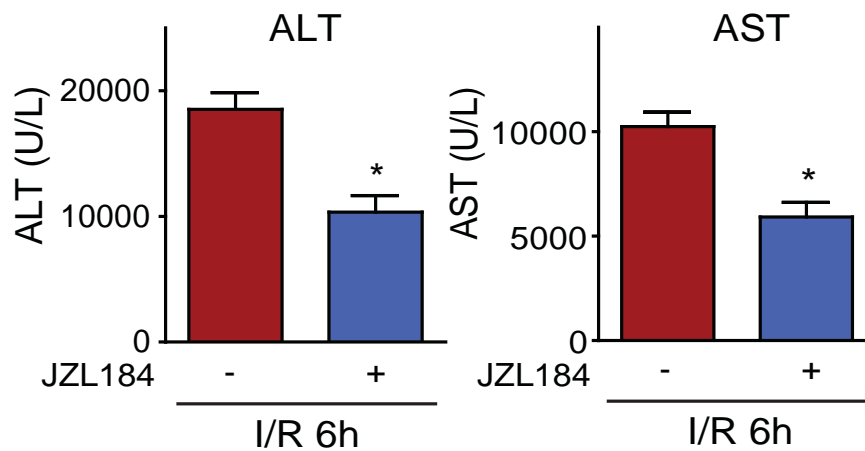
A liver histology (H&E staining)



B neutrophil infiltration (MPO staining)



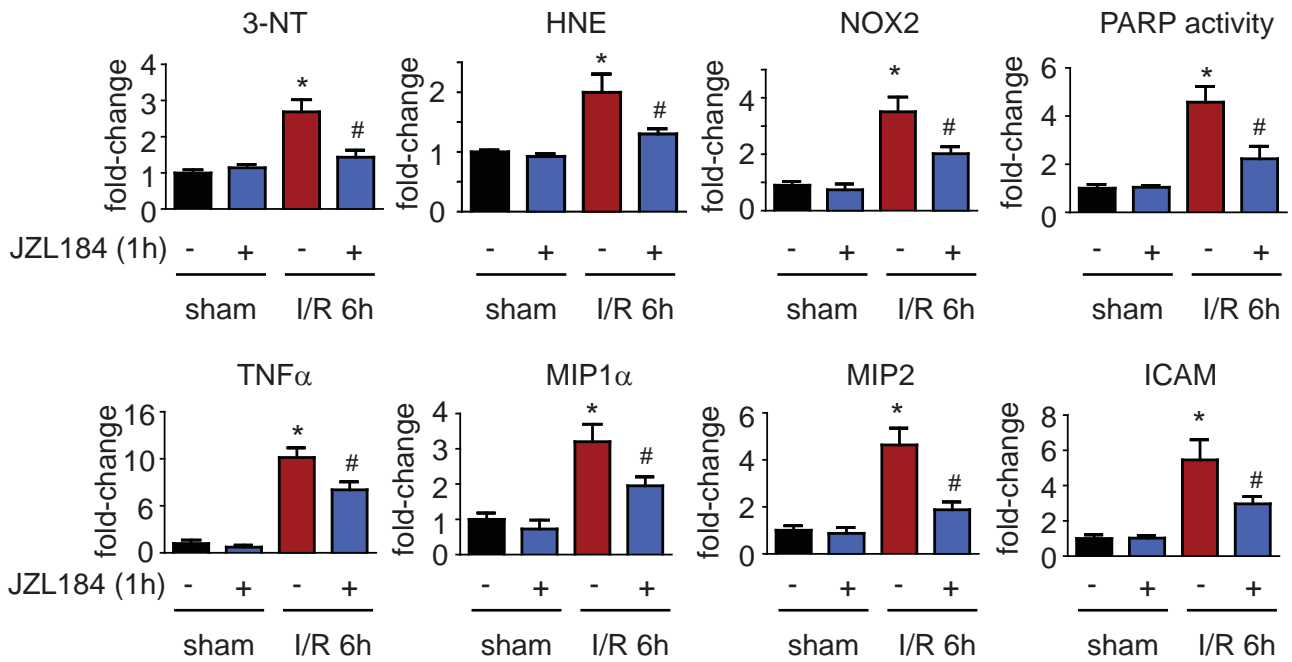
C liver damage markers



Suppl. Figure 11

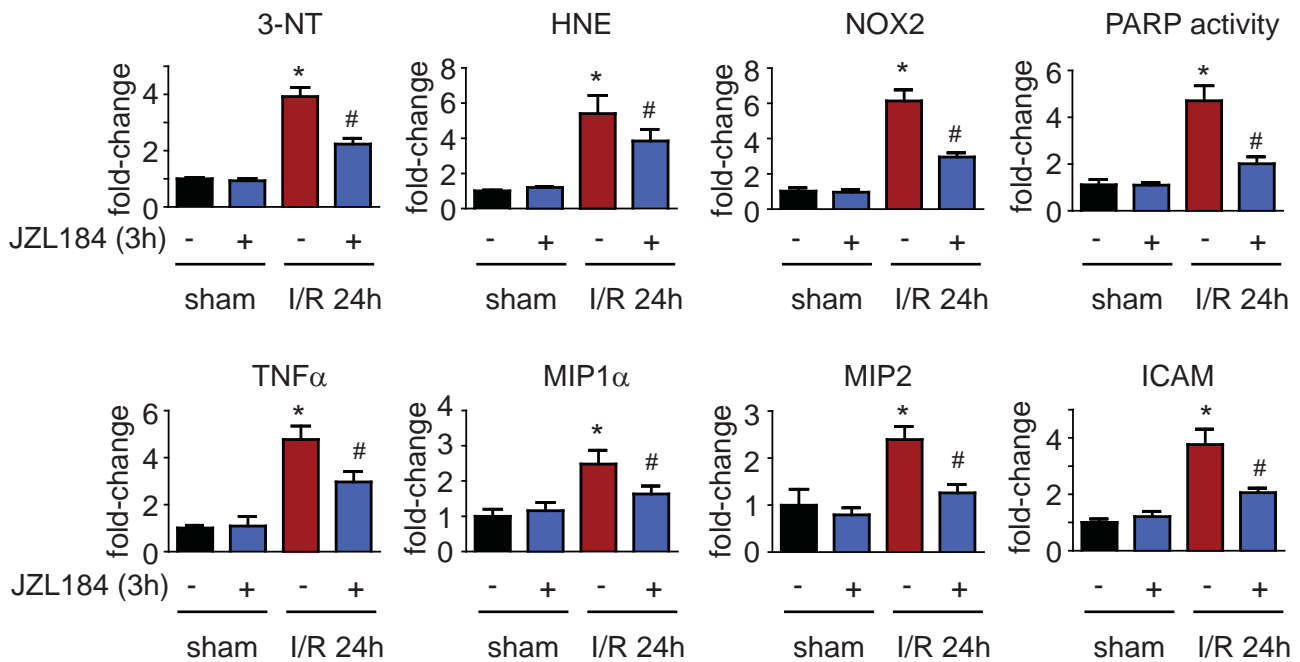
A

1h post-reperfusion treatment (6 h of I/R)

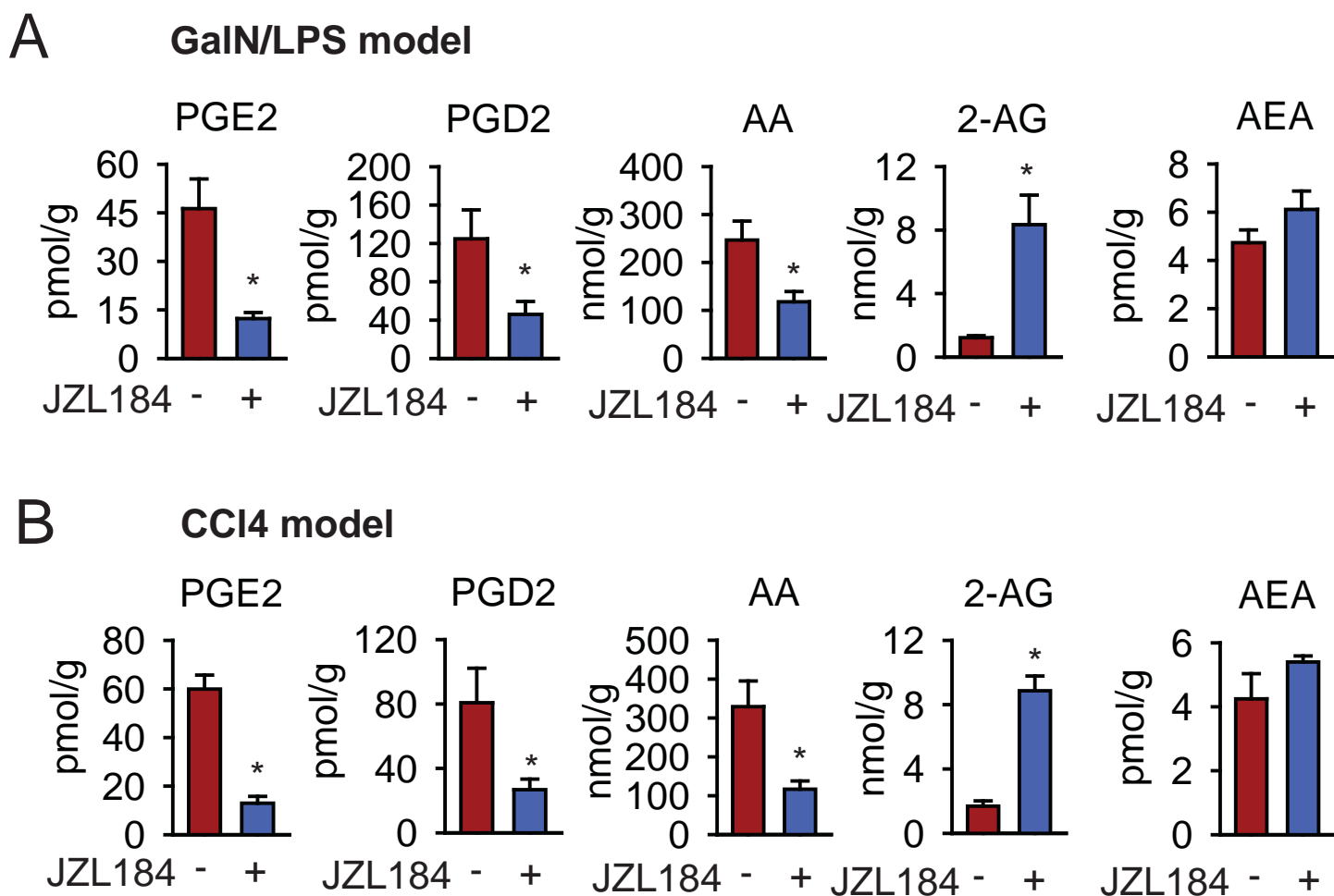


B

3h post-reperfusion treatment of JZL184 (24h of I/R)



Suppl. Figure 12



Suppl. Figure 13

