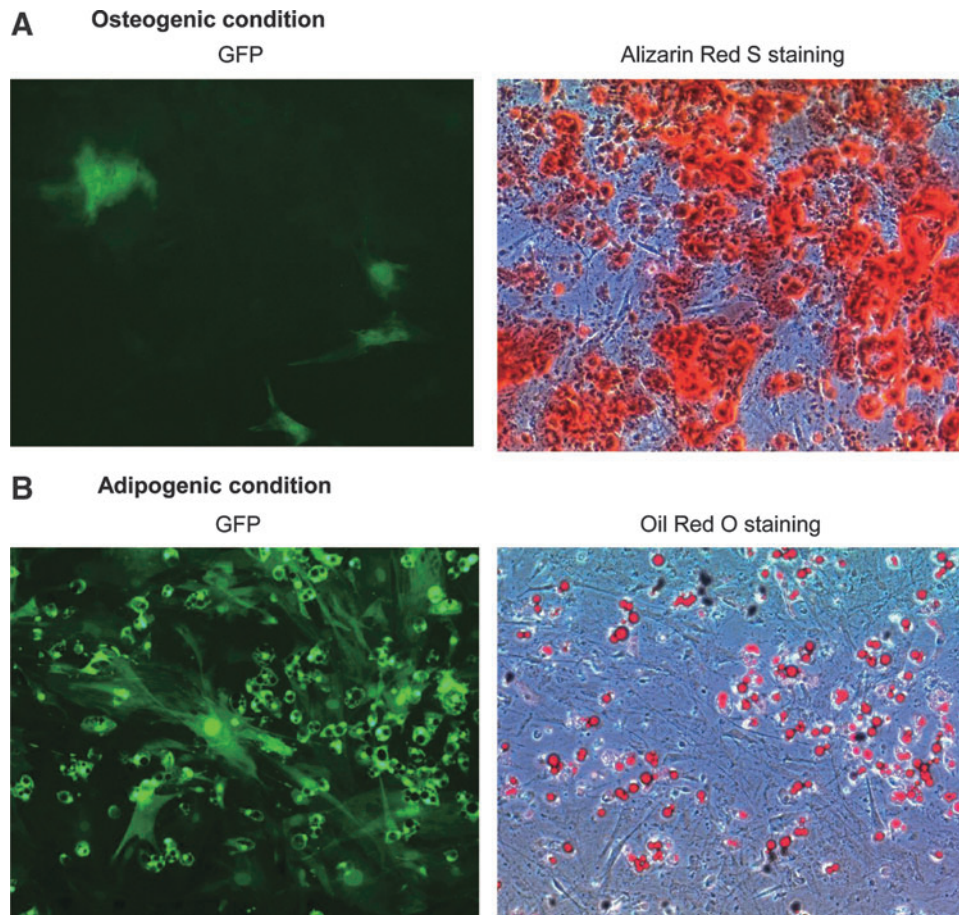


## Supplementary Data



**SUPPLEMENTARY FIG. S1.** Confirmation of the bipotency of mouse adipose tissue-derived stem/stromal cells (mADSCs) after lentiviral transduction. mADSCs at passage 2 were transduced with SIV-EGFP vector, and were induced to differentiate into the osteogenic lineage (**A**) or adipogenic lineage (**B**) 96 hr after SIV transduction. (**A**) *Left*: GFP expression. *Right*: Alizarin red S staining was performed after 4 weeks of osteogenic induction culture conditions. The red color in the photograph indicates calcium deposition (marker of osteogenesis) in the cells. (**B**) *Left*: GFP expression. *Right*: Oil droplets (marker of adipogenesis) were visualized by oil red O staining 2 weeks after adipogenic induction.