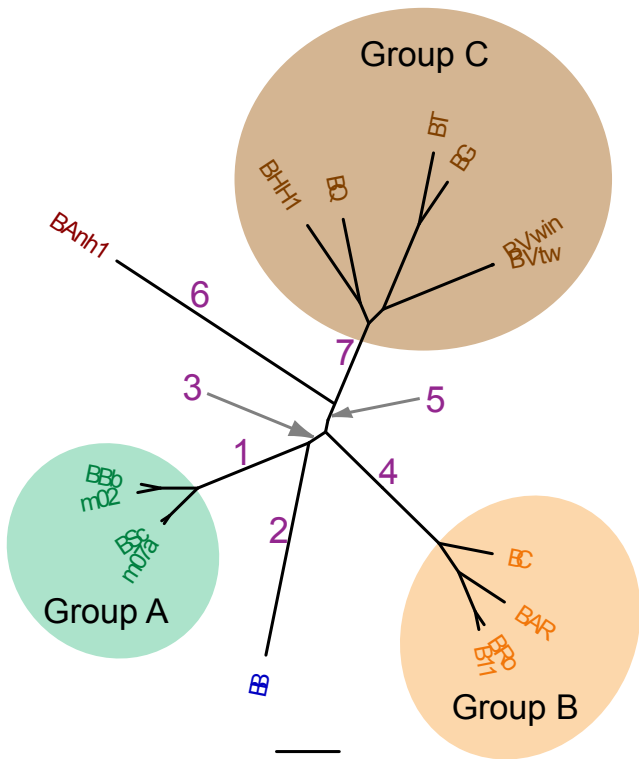


Group C



0.05

Tree tested:

	1	2	3	4	5	6	7
baseml (codon)	32	71	3	22	1	259	40
<i>% of total</i>	7.5	16.6	0.7	5.1	0.2	60.5	9.3
codeml (AA)	43	93	8	52	14	127	91
<i>% of total</i>	10	21.7	1.9	12.1	3.3	29.7	21.3