

1 **SUPPLEMENTARY MATERIAL**

2 Submitted to *BioMed Research International* - Special Issue "Actinomycetes: Role in
3 Biotechnology and Medicine"

4

5 **Anti-*Candida* properties of urauchimycins from actinobacteria associated with**
6 ***Trachymyrmex* ants**

7

8 Thais D. Mendes, Warley S. Borges, Andre Rodrigues, Scott E. Solomon, Paulo C. Vieira, Marta
9 C. T. Duarte, Fernando C. Pagnocca

10

11 Contents:

12

13 Table S1. Actinobacteria strains used in the present study.

14

15 Figure S1. ^1H NMR of Urauchimycin A (CDCl_3 , 400 MHz).

16

17 Figure S2. ^1H NMR of Urauchimycin B (CDCl_3 , 400 MHz).

18

19

20

21

22

23

24

25
26
27
28
29
30
31
32
33
34

35 Table S1. Actinobacteria strains used in the present study

Colony Id	Worker ¹	Isolate Id	Ant	Collection site	GPS
CTL080820-02	A	TD016	<i>Trachymyrmex</i> sp.	Estação Ecológica do Panga, Uberlândia – MG	S 19°17.291' W 48°39.670'
CTL080820-02	B	TD017	<i>Trachymyrmex</i> sp.	Estação Ecológica do Panga, Uberlândia – MG	S 19°17.291' W 48°39.670'
ARTD080903-01	B	TD018	<i>Trachymyrmex</i> sp.	UNESP, Rio Claro – SP ²	S 10° 23.766' W 48° 21.700'
ARTD080903-02	A	TD019	<i>Trachymyrmex</i> sp.	UNESP, Rio Claro – SP	S 10° 23.766' W 48° 21.700'
ARTD080903-02	B	TD020	<i>Trachymyrmex</i> sp.	UNESP, Rio Claro – SP	S 10° 23.766' W 48° 21.700'
ARTD080903-02	C1	TD021	<i>Trachymyrmex</i> sp.	UNESP, Rio Claro – SP	S 10° 23.766' W 48° 21.700'
ARTD080903-02	C2	TD022	<i>Trachymyrmex</i> sp.	UNESP, Rio Claro – SP	S 10° 23.766' W 48° 21.700'
ARTD080903-02	C3	TD023	<i>Trachymyrmex</i> sp.	UNESP, Rio Claro – SP	S 10° 23.766'

Colony Id	Worker ¹	Isolate Id	Ant	Collection site	GPS
					W 48° 21.700'
ARTD080903-03	A	TD025	<i>Trachymyrmex</i> sp.	UNESP, Rio Claro – SP	S 10° 23.766'
					W 48° 21.700'
ARTD080903-03	D	TD027	<i>Trachymyrmex</i> sp.	UNESP, Rio Claro – SP	S 10° 23.766'
					W 48° 21.700'
ARTD080903-04	A	TD028	<i>Trachymyrmex</i> sp.	UNESP, Rio Claro – SP	S 10° 23.766'
					W 48° 21.700'
ARTD080903-04	B	TD030	<i>Trachymyrmex</i> sp.	UNESP, Rio Claro – SP	S 10° 23.766'
					W 48° 21.700'
SES080909-08	A	TD032	<i>Trachymyrmex</i> sp.	Fazenda São Bento, Miranda – MS	S 19° 50.146'
					W 57° 01.016'
SES080911-04	A1	TD033	<i>Trachymyrmex</i> sp.	Fazenda São Bento, Miranda – MS	S 19° 57.612'
					W 56° 99.019'
SES080911-04	A2	TD034	<i>Trachymyrmex</i> sp.	Fazenda São Bento, Miranda – MS	S 19° 57.612'
					W 56° 99.019'
SES080911-06	A	TD035	<i>Trachymyrmex</i> sp.	Fazenda São Bento, Miranda – MS	S 19° 49.474'
					W 56° 01.079'
SES080921-03	A	TD045	<i>Trachymyrmex</i> sp.	Estação Ecológica do Panga, Uberlândia – MG	S 19° 17.291'
					W 48° 39.670'
SES080921-03	B	TD047	<i>Trachymyrmex</i> sp.	Estação Ecológica do Panga, Uberlândia – MG	S 19° 17.291'
					W 48° 39.670'
SES080922-03	C	TD049	<i>Trachymyrmex</i> sp.	Estação Ecológica do Panga, Uberlândia – MG	S 19° 17.291'
					W 48° 39.670'
SES080922-03	D	TD050	<i>Trachymyrmex</i> sp.	Estação Ecológica do Panga, Uberlândia – MG	S 19° 17.291'
					W 48° 39.670'
SES080924-01	A1	TD051	<i>Trachymyrmex</i> sp.	Estação Ecológica do Panga, Uberlândia – MG	S 19° 17.291'
					W 48° 39.670'
SES080924-01	A2	TD053	<i>Trachymyrmex</i> sp.	Estação Ecológica do Panga, Uberlândia – MG	S 19° 17.291'
					W 48° 39.670'
SES080924-01	B	TD055	<i>Trachymyrmex</i> sp.	Estação Ecológica do Panga, Uberlândia – MG	S 19° 17.291'

Colony Id	Worker ¹	Isolate Id	Ant	Collection site	GPS
					W 48°39.670'
SES080924-02	B	TD058	<i>Trachymyrmex</i> sp.	Estação Ecológica do Panga, Uberlândia – MG	S 19°17.291'
					W 48°39.670'

36 ¹ Letters refers to an ant worker from which we isolated actinobacteria. Letters followed by numbers indicate that
37 more than one actinobacteria was isolated from the same worker.

38 ² UNESP: São Paulo State University; SP: São Paulo State; MS: Mato Grosso do Sul State; MG: Minas Gerais State

39

40

41

42

43

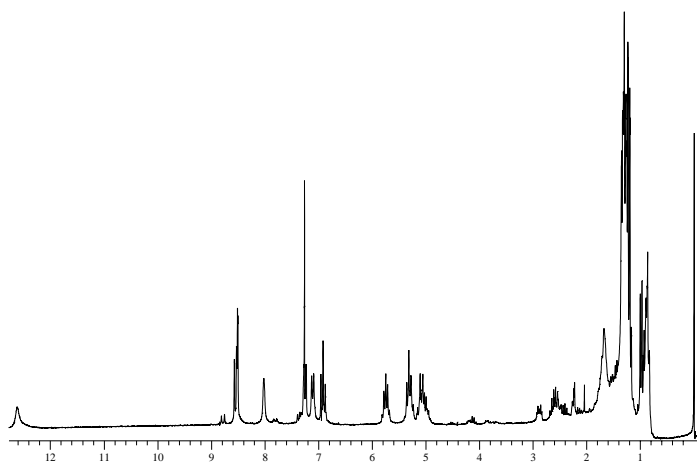
44

45

46

47 Fig. S1.

48



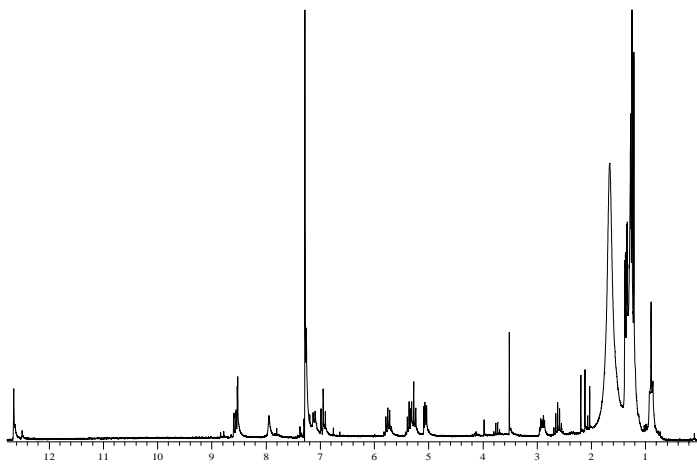
49

50

51

52

53 Fig. S2.



54

55

56