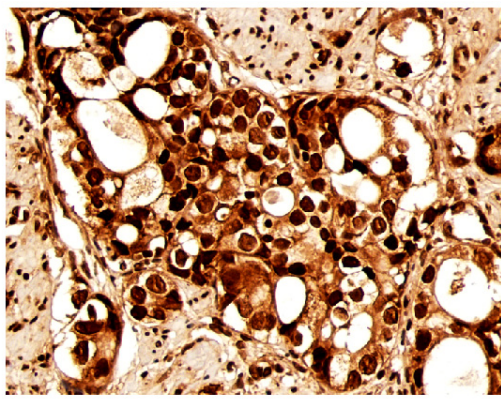


**Supplementary Information S-6:** High-resolution microscopic images depicting the staining pattern/localization and intensities of the candidate proteins (*viz.* CK2alpha, PML, pAKT(S473), pFOXO3a(S253)) involved in the described signaling axis.

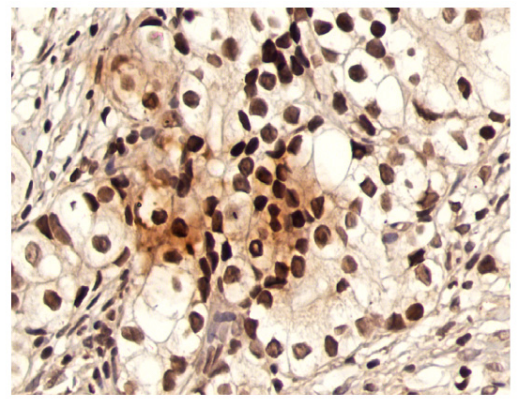
S - 6

A

PCa

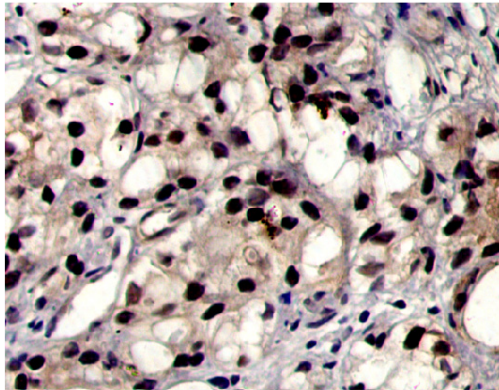


CK2alpha

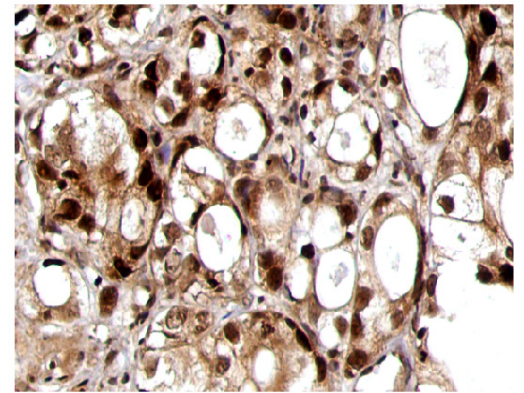


PML

PCa



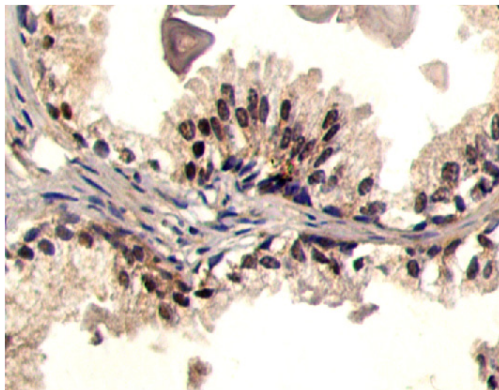
pAKT(S473)



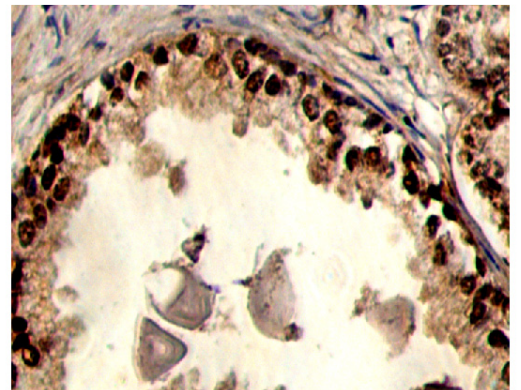
pFOXO3a(S253)

B

PHp

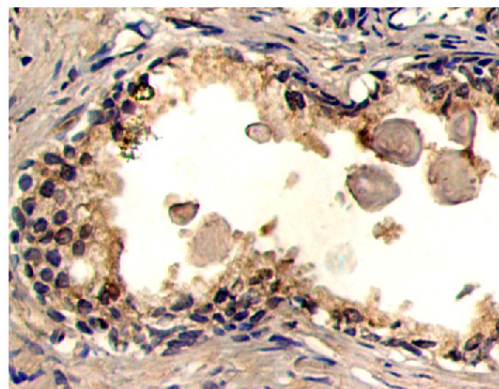


CK2alpha

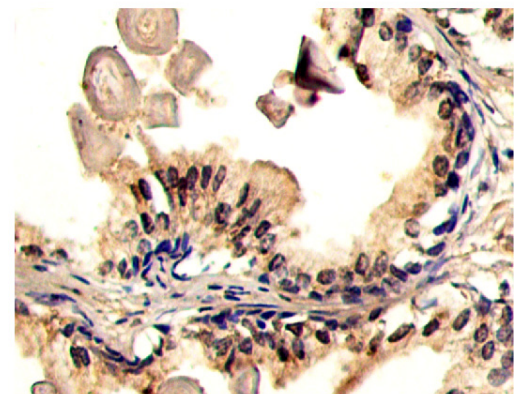


PML

PHp



pAKT(S473)



pFOXO3a(S253)

1 **Figure Legend\_S6**

2 Protein Kinase CK2, pAKT(S473) and pFOXO3a(S2530 are up regulated in Human  
3 Prostate Cancer (PCa) with prominent nuclear localizations while PML depicts an  
4 intense nuclear localization in Prostate Hyperplasia (PHp) tissue samples **(A)**  
5 Representative high resolution Immunohistochemistry images of the candidate proteins  
6 involved in the signalling axis, *viz*; CK2alpha, PML, pAKT (S473) and pFOXO3a (S253)  
7 in human PCa tissue samples. **(B)** Representative high resolution  
8 Immunohistochemistry images of the candidate proteins involved in the signalling axis,  
9 *viz*; CK2alpha, PML, pAKT (S473) and pFOXO3a (S253) in human PHp tissue samples.