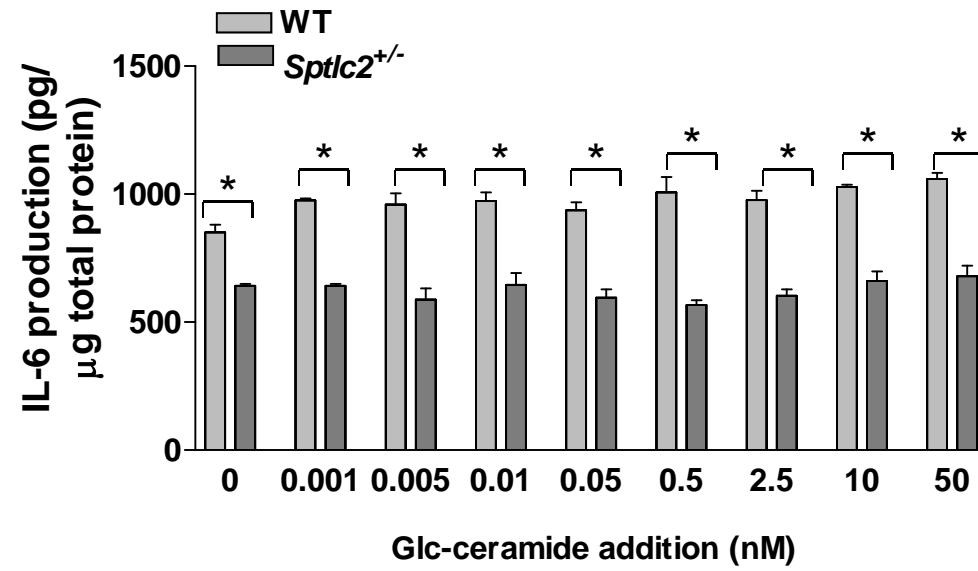
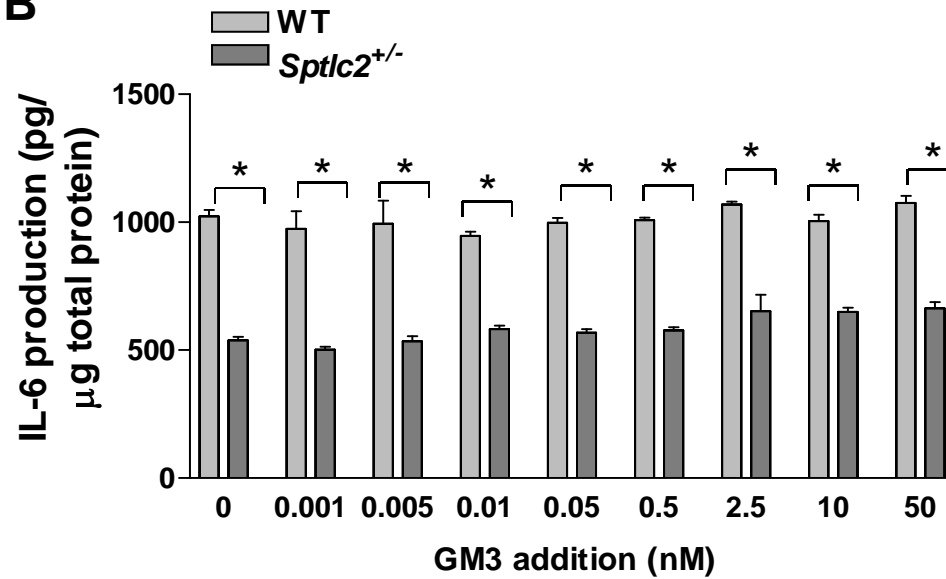


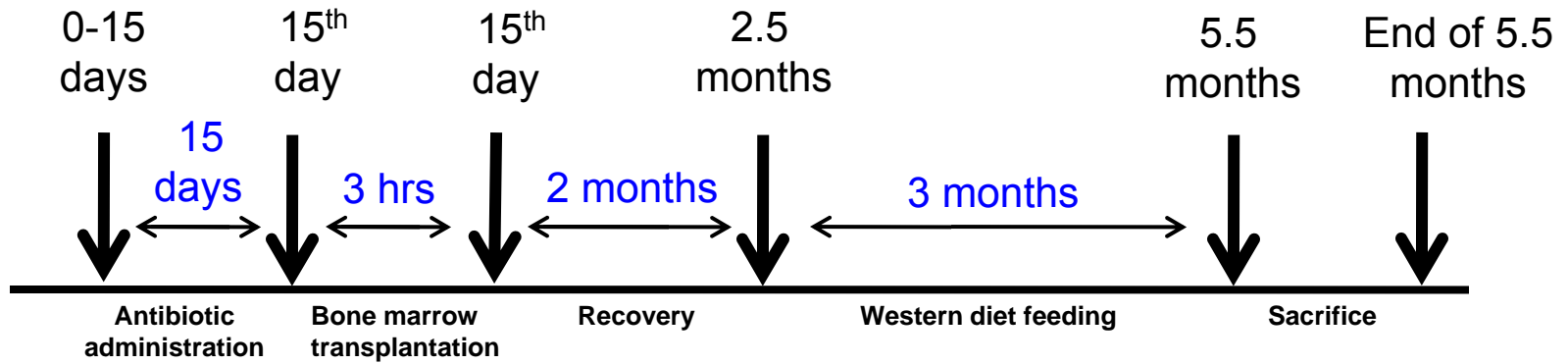
A



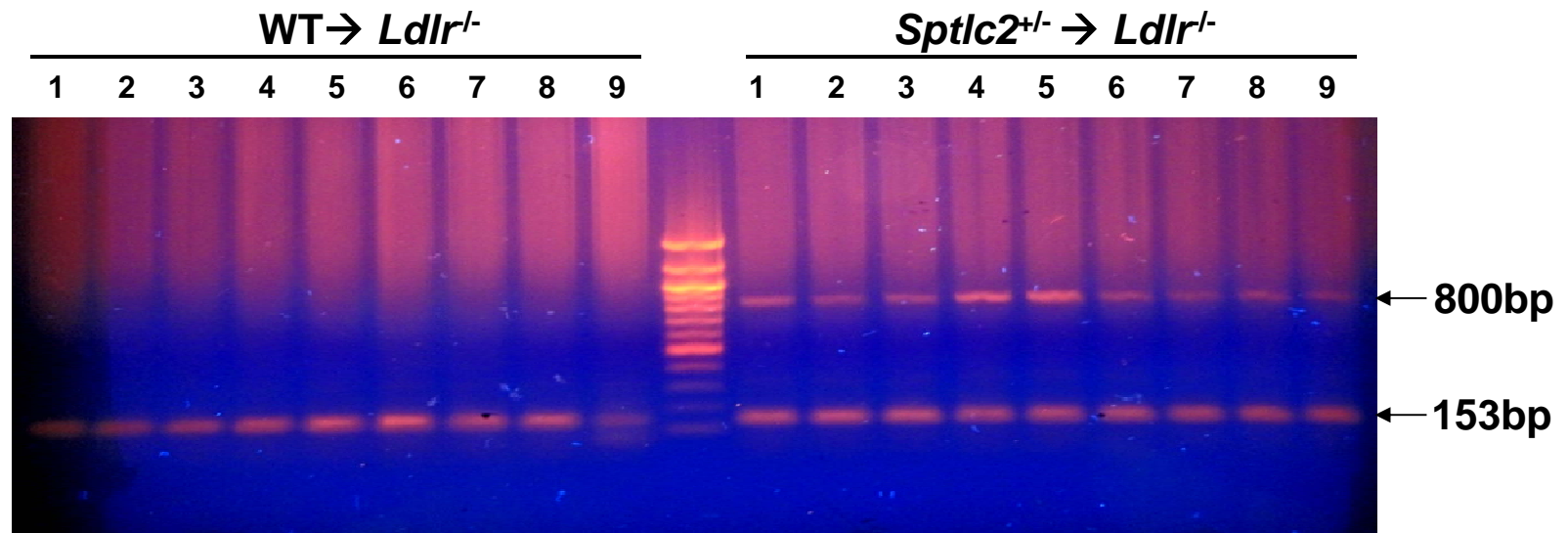
B



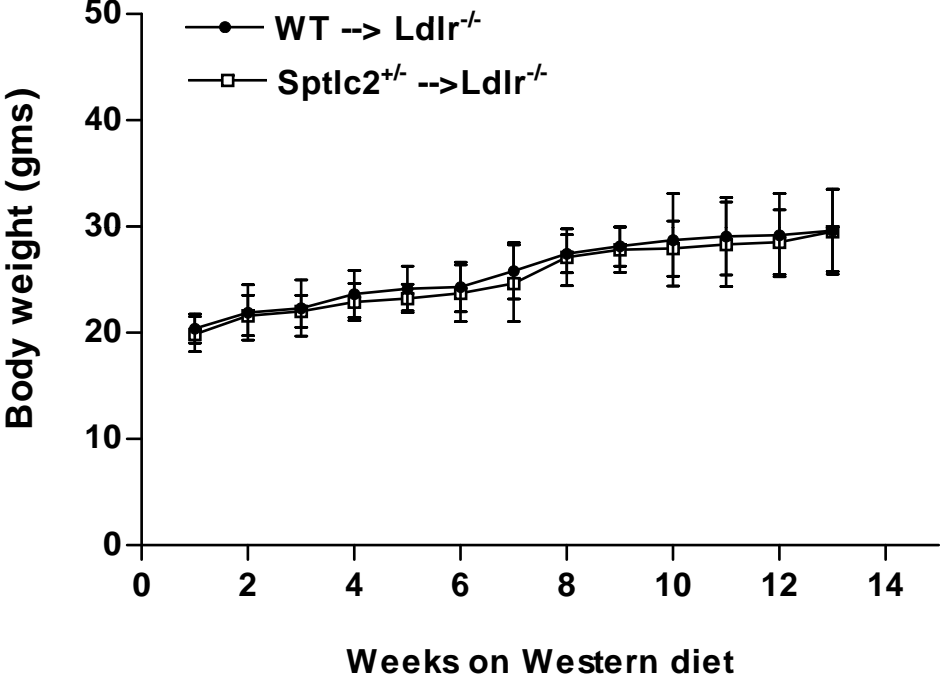
A



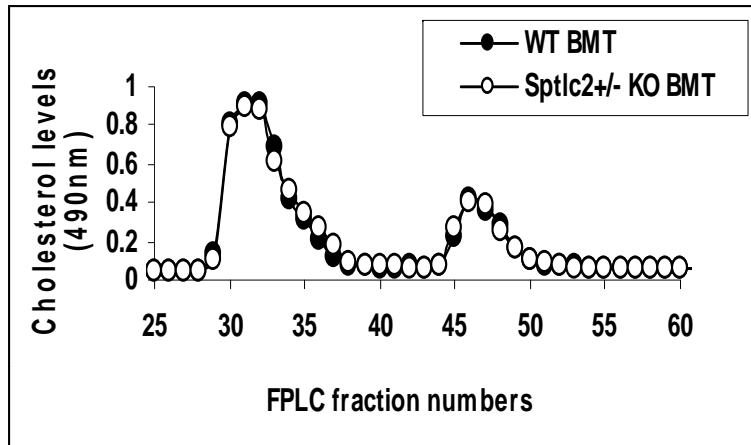
B



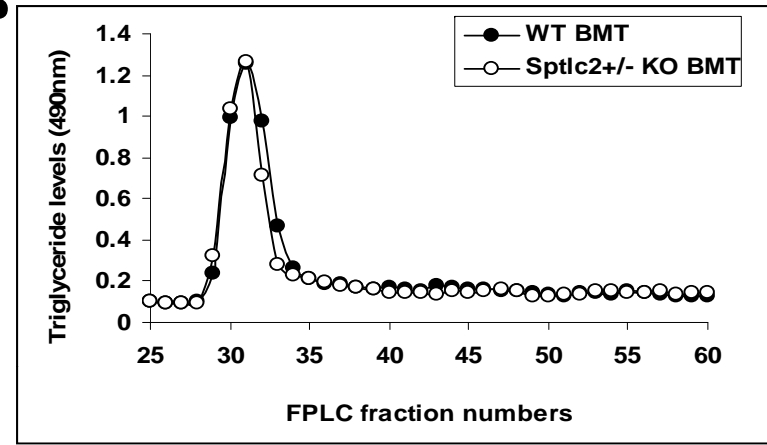
Supplemental Fig.3. Chakraborty et al.



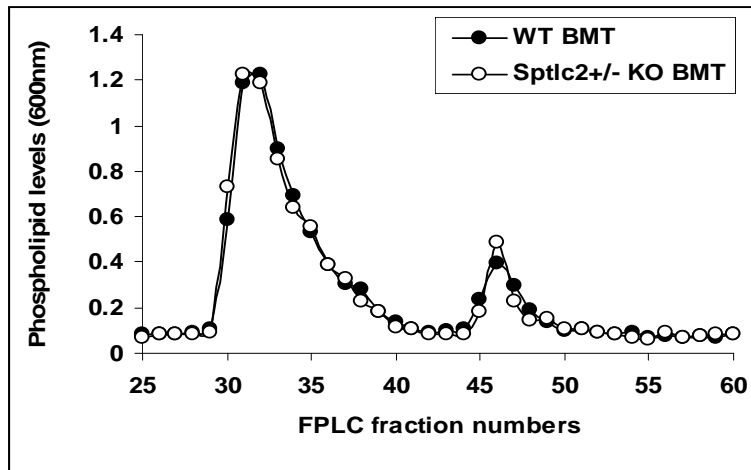
A



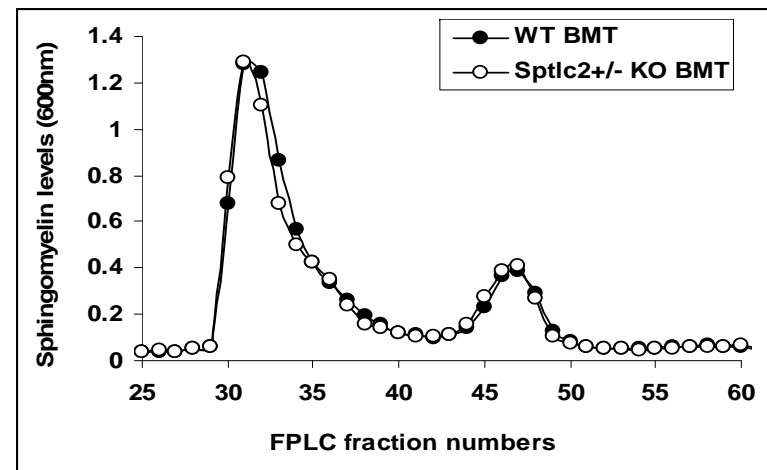
B



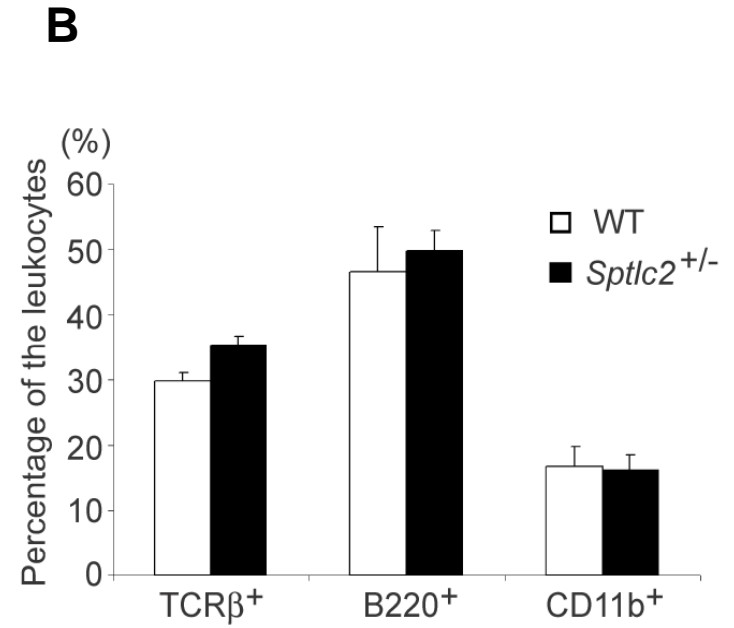
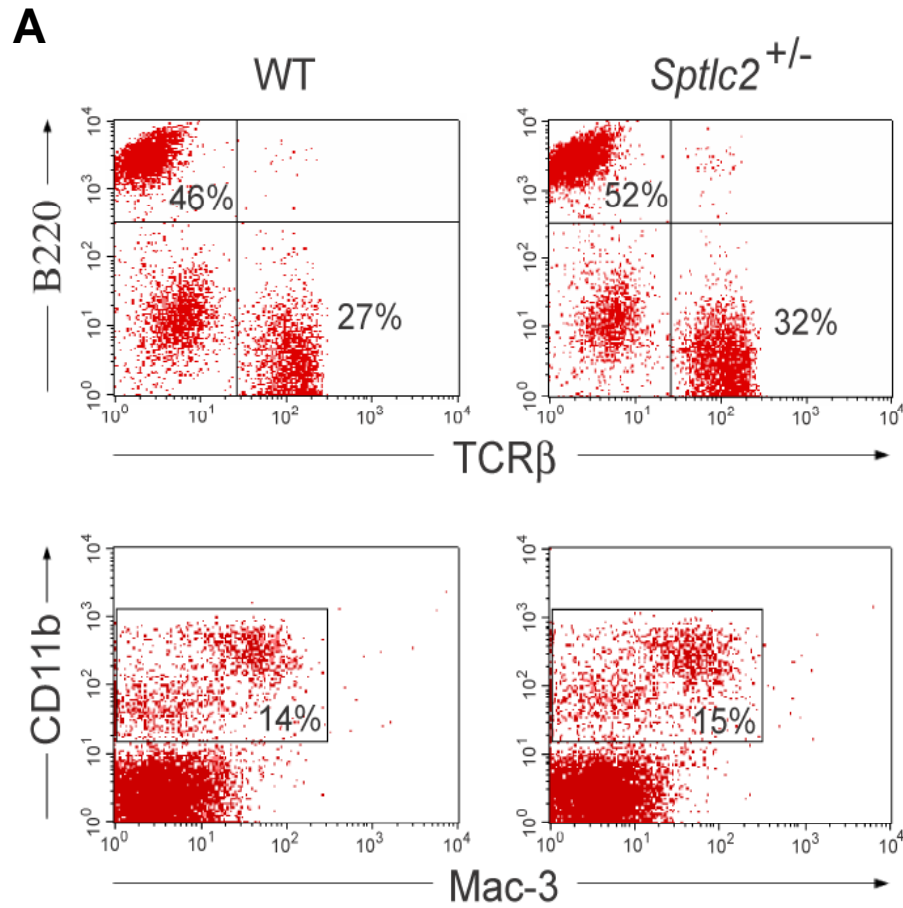
C

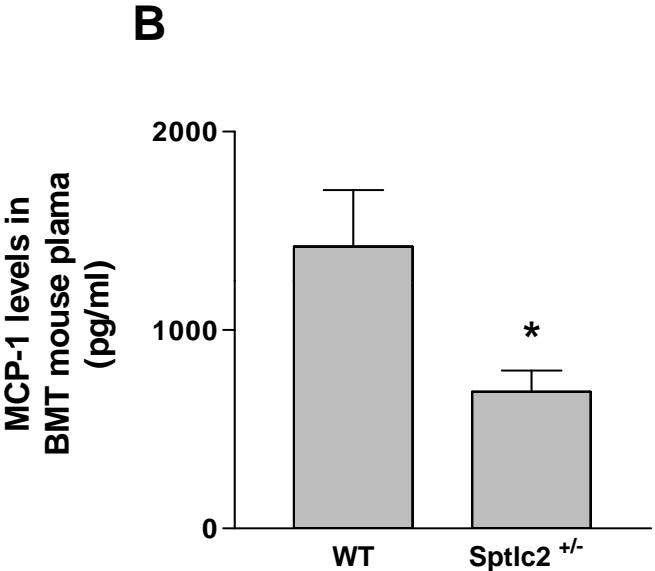
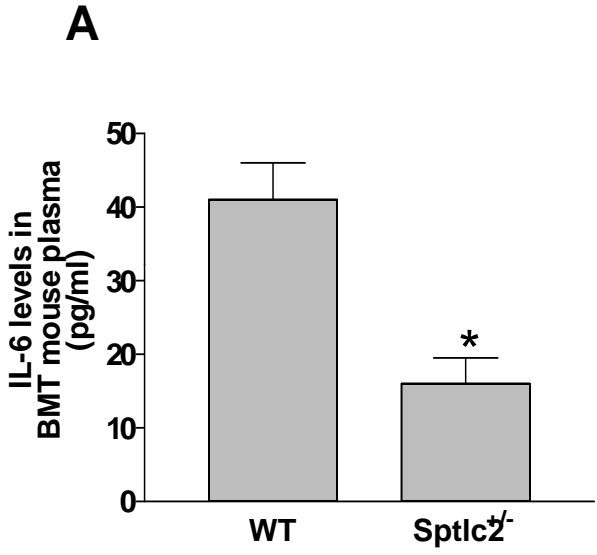


D

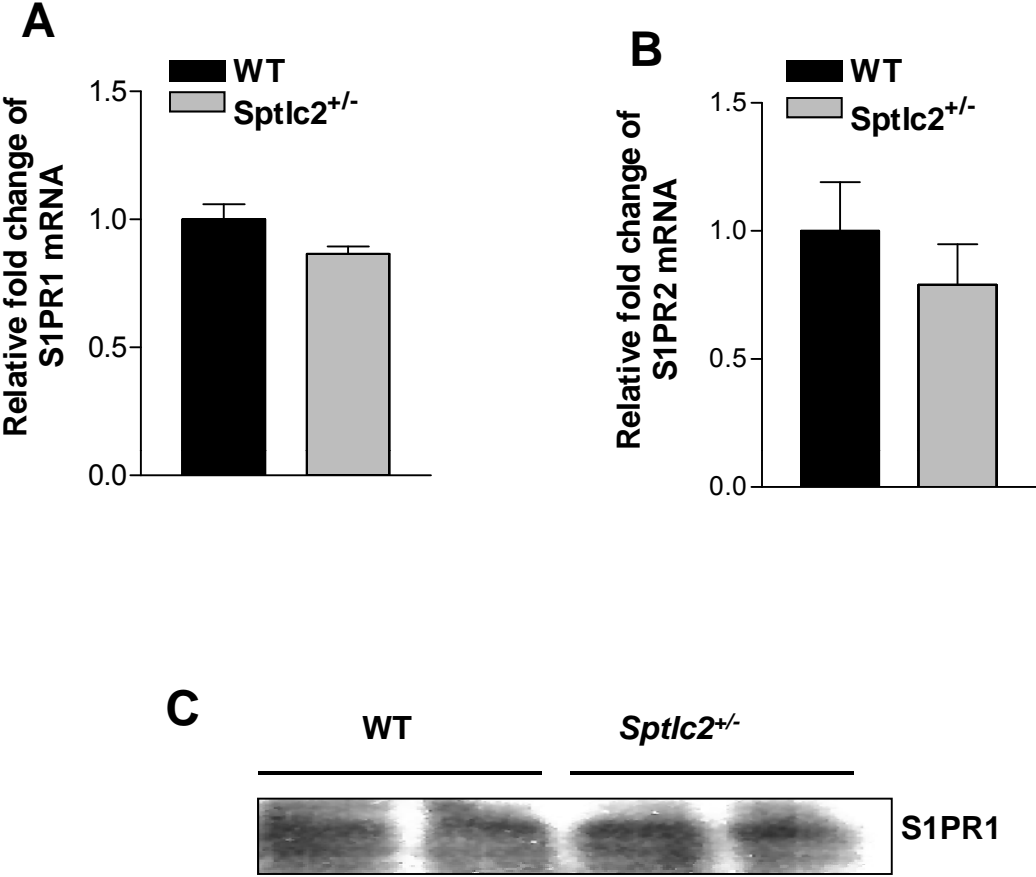


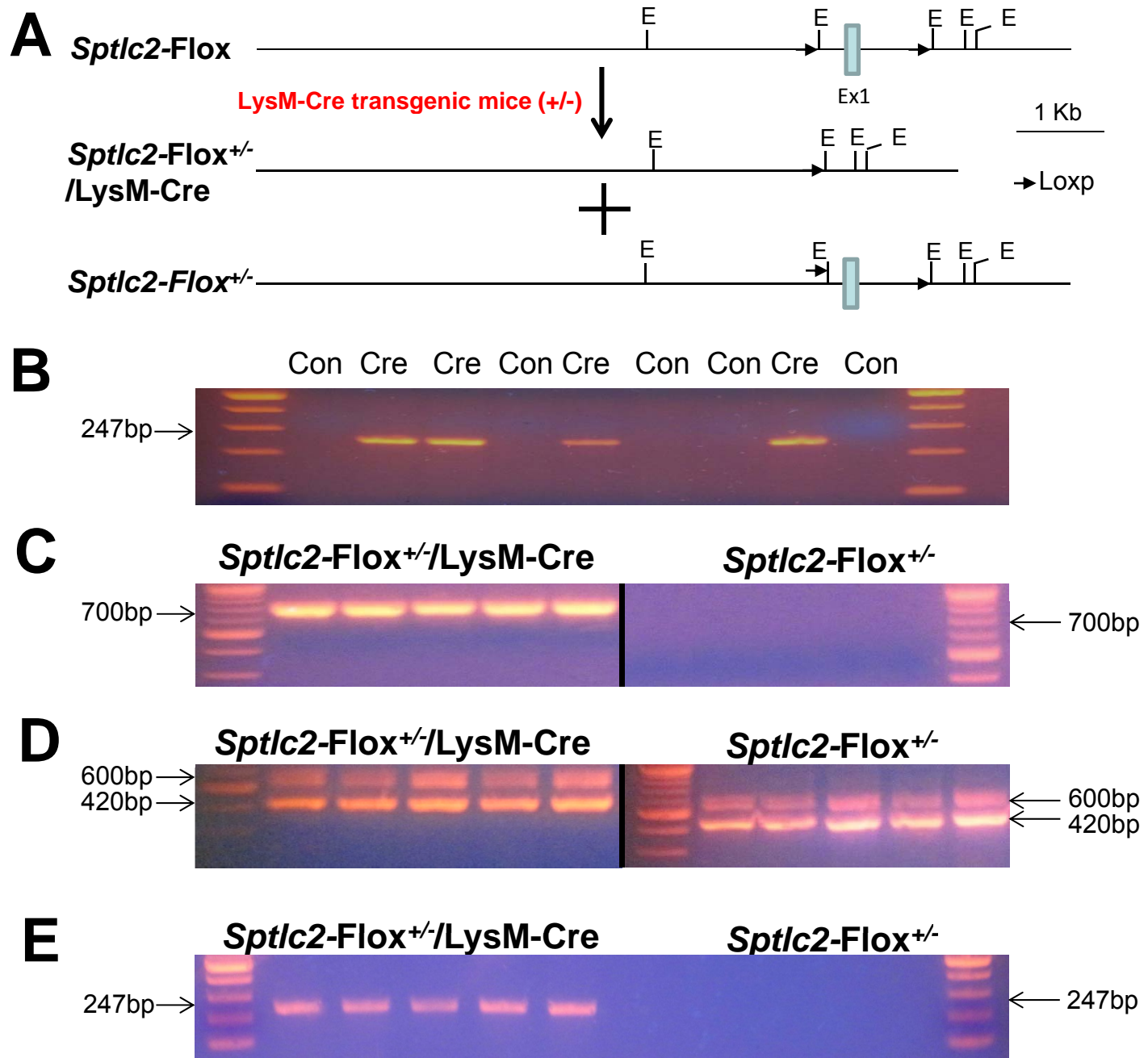
Supplemental Fig.5. Chakraborty et al.





Supplemental Fig.7. Chakraborty et al.





Intracellular Sphingolipid concentrations of WT and *Sptlc2*^{+/-} macrophages.

	SM	PC	Cer	DAG	SO	S-1-P
	------(nmol/mg protein)-----					
WT	45±5	82±7	1.7±0.2	2.1±0.3	0.05±0.01	0.29±0.02
<i>Sptlc2</i>^{+/-}	33±3*	79±10	1.5±0.3	1.9±0.4	0.03±0.01	0.34±0.03

Value are mean ± SD, Bone marrow macrophages derived from n=5 mice. *p<0.05.

SM, sphingomyelin; PC, phosphatidylcholine; Cer, ceramide; DAG, diacylglycerol; SO, Sphingosine; S-1-P, Sphingosine-1-phosphate.

**Plasma lipid measurements of WT \rightarrow *Ldlr*^{-/-} and *Sptlc2*^{+/-} \rightarrow *Ldlr*^{-/-}
bone marrow transplanted mice.**

	Total cholesterol	Triglycerides	Phospholipids	Sphingomyelin
	------(mg/dL)-----			
WT \rightarrow <i>Ldlr</i>^{-/-}	1613 \pm 183	254 \pm 49	970 \pm 169	94 \pm 14
<i>Sptlc2</i>^{+/-} \rightarrow <i>Ldlr</i>^{-/-}	1603 \pm 242	236 \pm 48	827 \pm 141	81 \pm 12

Values are Mean \pm SD, Plasma derived from n=9 mice put on Western diet for 12 weeks.

Plasma sphingolipid concentrations of WT \rightarrow *Ldlr*^{-/-} and *Sptlc2*^{+/-} \rightarrow *Ldlr*^{-/-} bone marrow transplanted mice.

	SM (mmol/L)	Cer (μ mol/L)	SO (μ mol/L)	S-1-P (μ mol/L)
WT	3.7 \pm 0.1	173 \pm 37	1 \pm 0.2	22 \pm 3
<i>Sptlc2</i> ^{+/-}	3.4 \pm 0.1	155 \pm 20	0.9 \pm 0.2	24 \pm 3

SM, sphingomyelin; Cer, ceramide; SO, Sphingosine; S-1-P, Sphingosine-1-phosphate.

Value are Mean \pm SD. Plasma derived from n=5 mice put on Western diet for 12 weeks.

Blood cell counts in WT and *Sptlc2*^{+/-} donor mice

Mice	WT	<i>Sptlc2</i> ^{+/-}
Red Blood Cells (M/ul)	6.2 _± 0.7	5.7 _± 0.5
White Blood Cells (K/ul)	9.2 _± 2.1	9.0 _± 1.5
Hemoglobin (g/dl)	17.3 _± 2.2	18.8 _± 2.8
Platelets (K/ul)	963 _± 41	896 _± 65
Neutrophils (K/ul)	3.3 _± 0.10	3.5 _± 0.1
Eosinophils (K/ul)	0.6 _± 0.07	0.7 _± 0.15
Basophils (K/ul)	0.2 _± 0.1	0.2 _± 0.1
Monocytes (K/ul)	1.4 _± 0.6	1.3 _± 0.4
Lymphocytes (K/ul)	8.8 _± 1.8	8.5 _± 0.6

Values are mean_±SD, n=5. M, million; K, thousand.

**Blood cell counts in WT → *Ldlr*^{-/-} and *Sptlc2*^{+/-} → *Ldlr*^{-/-}
bone marrow transplanted mice**

Mice	WT → <i>Ldlr</i> ^{-/-}	<i>Sptlc2</i> ^{+/-} → <i>Ldlr</i> ^{-/-}
Red Blood Cells (M/ul)	4.6±0.4	4.4±0.1
White Blood Cells (K/ul)	6±1.2	5.2±0.7
Hemoglobin (g/dl)	16.6±0.6	16.5±0.2
Platelets (K/ul)	216±78	193±29
Neutrophils (K/ul)	2.6±0.3	2.2±0.2
Eosinophils (K/ul)	0.9±0.2	0.8±0.3
Basophils (K/ul)	0.2±0.1	0.1±0.1
Monocytes (K/ul)	1.5±0.2	1.3±0.2
Lymphocytes (K/ul)	4.2±0.9	3.4±0.7

Values are Mean±SD. M, million; K, thousand.

Blood collected from n=5 mice put on Western diet for 12 weeks.

**Blood cell counts in *Sptlc2-Flox^{+/-}* → *Ldlr^{-/-}* and *Sptlc2-Flox^{+/-}* /*LysM-Cre* → *Ldlr^{-/-}*
bone marrow transplanted mice**

Mice	<i>Sptlc2-Flox^{+/-}</i> → <i>Ldlr^{-/-}</i>	<i>Sptlc2-Flox^{+/-}</i> / <i>LysM-Cre</i> → <i>Ldlr^{-/-}</i>
Red Blood Cells (M/ul)	8.1±0.2	8.5±0.1
White Blood Cells (K/ul)	8.2±2.1	6.5±0.6
Hemoglobin (g/dl)	12.6±0.2	12.9±0.3
Platelets (K/ul)	497±169	488±90
Neutrophils (K/ul)	4.1±0.5	4.5±0.7
Eosinophils (K/ul)	1.1±0.2	1.0±0.3
Basophils (K/ul)	0.6±0.5	0.6±0.3
Monocytes (K/ul)	1.8±0.2	1.5±0.1
Lymphocytes (K/ul)	5.3±1.4	4.6±0.5

Values are Mean±SD. M, million; K, thousand.

Blood collected from n=5 mice put on Western diet for 12 weeks.