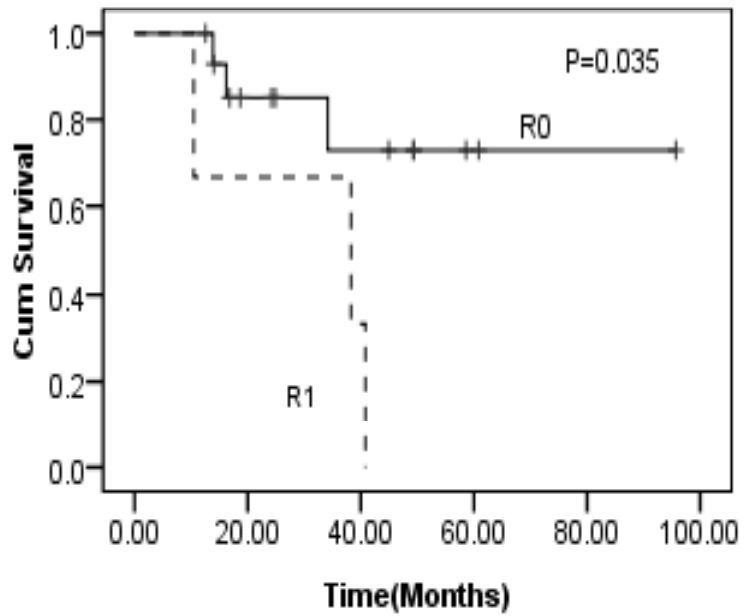
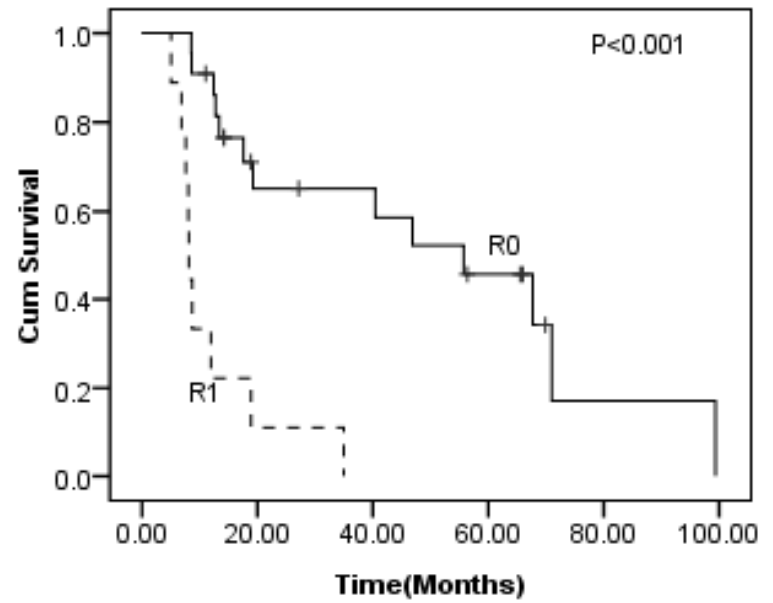


Supplemental data:

Overall survival R0 vs. R1 in tumors ≤ 20 mm

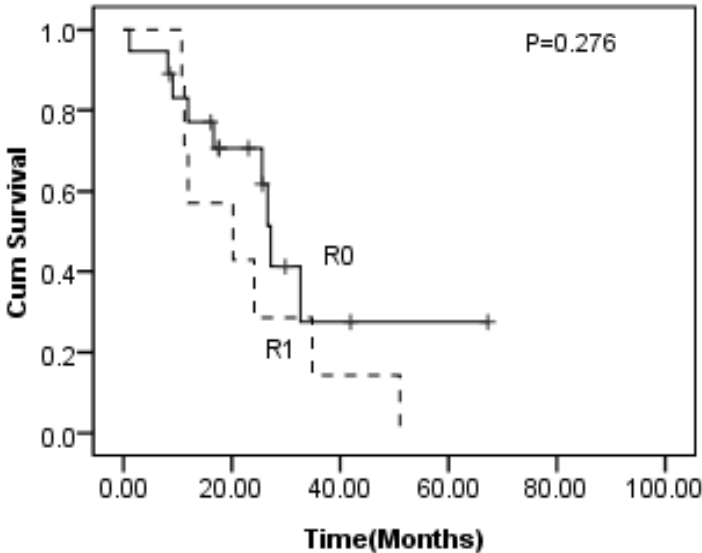


Overall survival R0 vs. R1 in tumors 21-25 mm

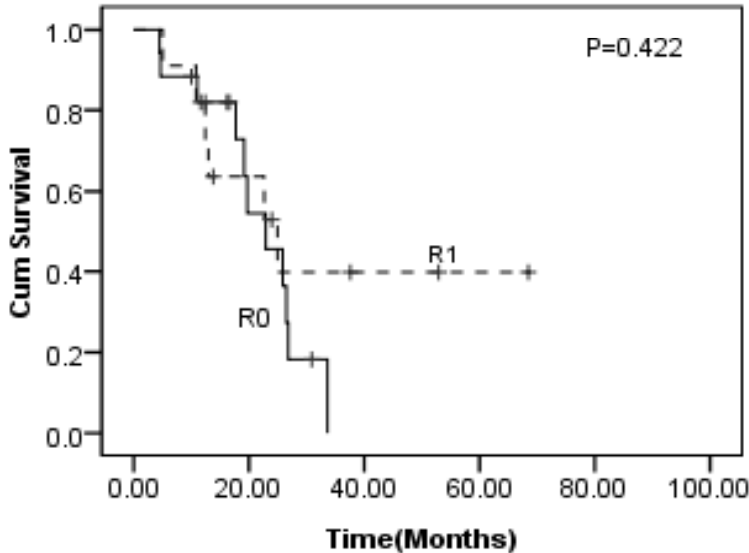


Supplemental data (cont'd):

Overall survival R0 vs. R1 in tumors 26-30 mm

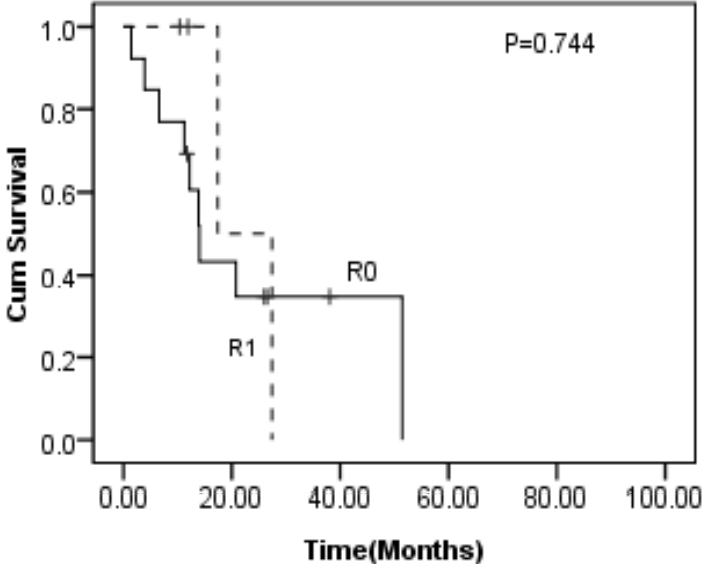


Overall survival R0 vs. R1 in tumors 31-35 mm

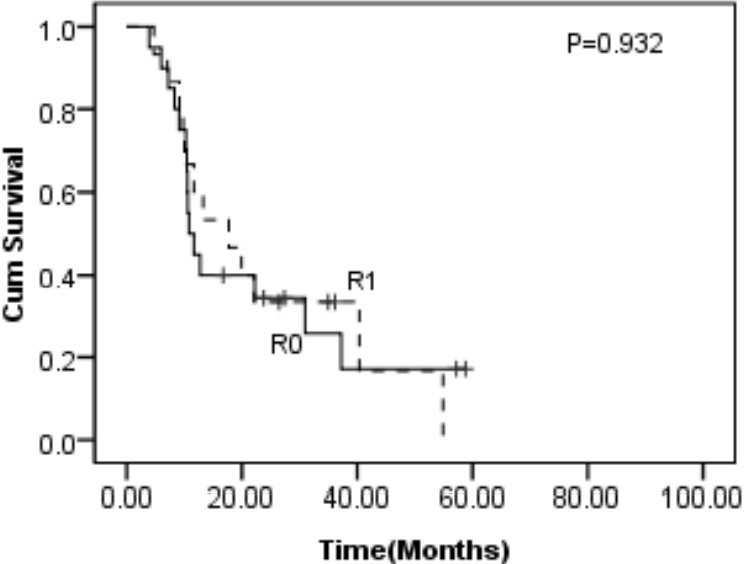


Supplemental data (cont'd):

Overall survival R0 vs. R1 in tumors 36-40 mm

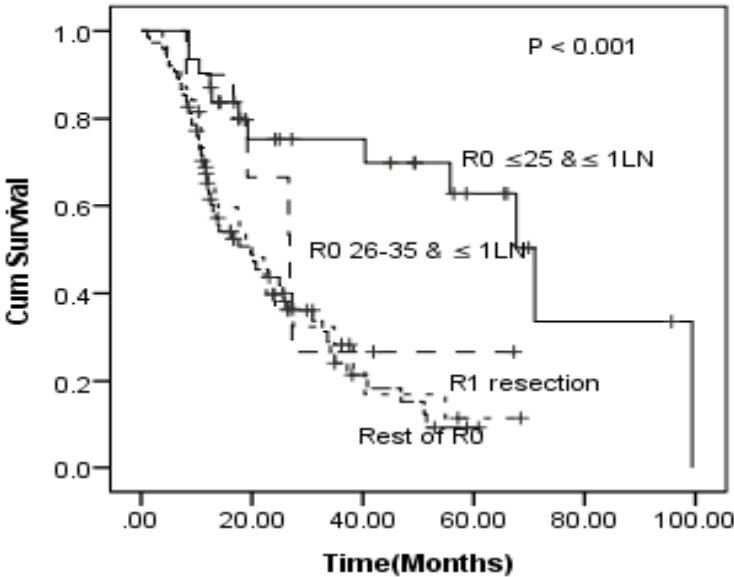


Overall survival R0 vs. R1 in tumors >40 mm



Supplemental figure:

Cumulative survival following upfront surgical resection of pancreatic cancer



	Survival (Months) Median(95%CI) Mean ± SD(95%CI)
R0 resection ≤25mm and ≤ 1LN N= 30	70.9 (54.0, 87.9) 63.1 ± 8.0 (47.3,78.4)
R0 resection 26-35 mm and ≤ 1LN N= 10	26.8(16..9, 36.6) 33.7 ± 7.4 (19.2,48.2)
Rest of R0 N=65	19.7(10.1, 29.2) 25.1 ± 2.5 (20.0,30.2)
R1 resection N=49	17.4(10.0, 25.4) 24.3 ± 2.7(18.8,29.7)
P value	<0.001