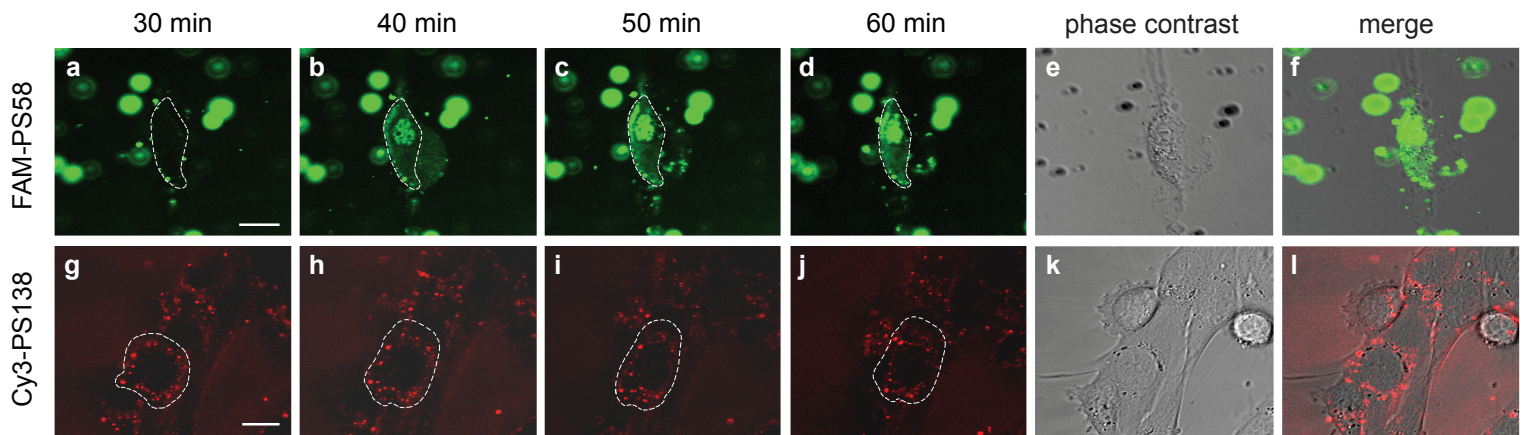


FIGURE S3



Supplementary Figure S3.

Differential uptake and localization of AONs in DM500 myoblasts. DM500 myoblasts were transfected with (a-f) FAM-PS58 or (g-l) Cy3-PS138. Uptake was visualized by live cell imaging. Time points indicate minutes after addition of the oligo-transfection reagent complex to the culture medium. Phase contrast (e, k) and dashed lines help to recognize cell boundaries (see also merge). Essentially no nuclear localization was detected for ENA-modified PS138, whereas 2'-OMe/PT-modified PS58 showed prominent nuclear localization. Intense signals in panels a-f represent FAM-PS58-polyethyleneimine complexes in the medium. Representative images of two independent experiments are shown. The type of fluorophore used did not affect AON behaviour (data not shown). Bars: 20 μm .