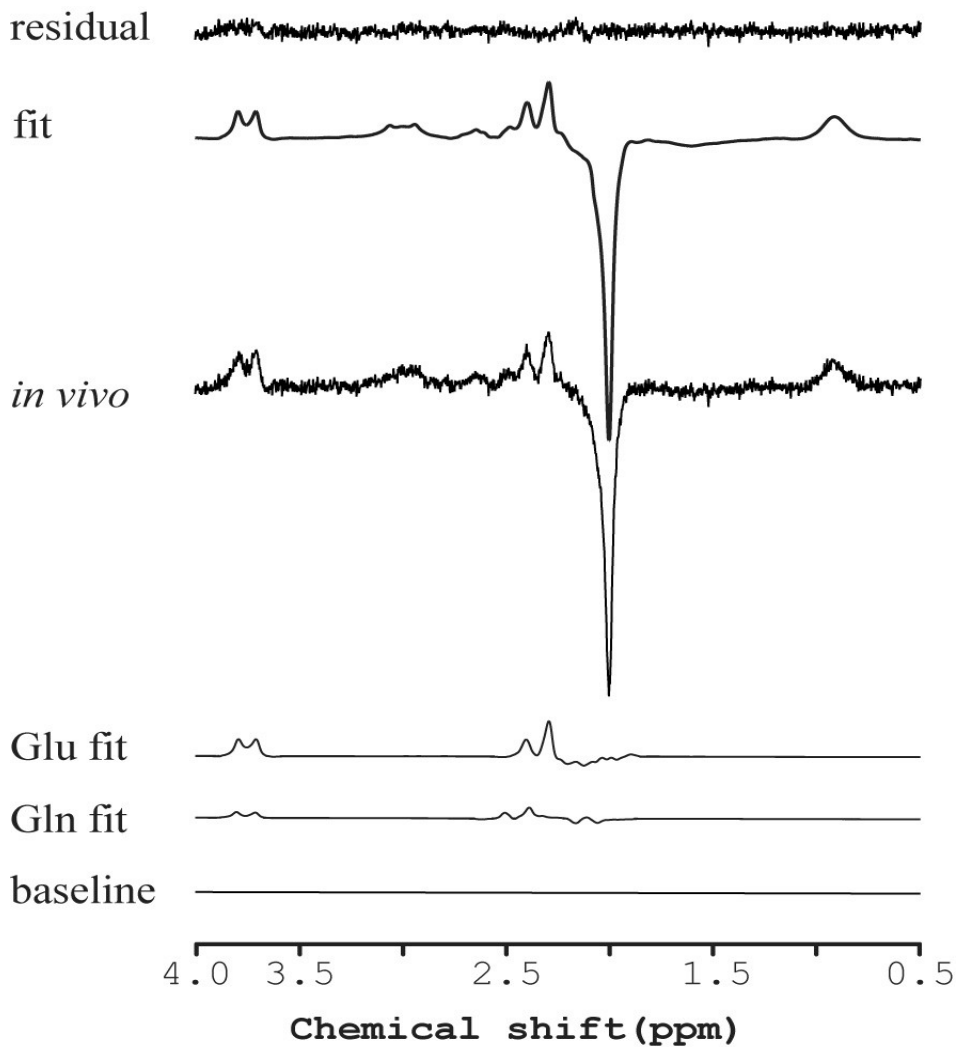


Supplementary figure 1A: mPFC (blue) and left insula (red) MRS voxel locations shown on the MNI template.



Supplementary figure 1B: LCMoDel quantification of the representative 1H NMR spectrum obtained using MEGA-PRESS sequence from a 48 x 21 x 21 mm³ voxel placed in the mPFC region of the human brain. The contribution of Glu and Gln are shown.