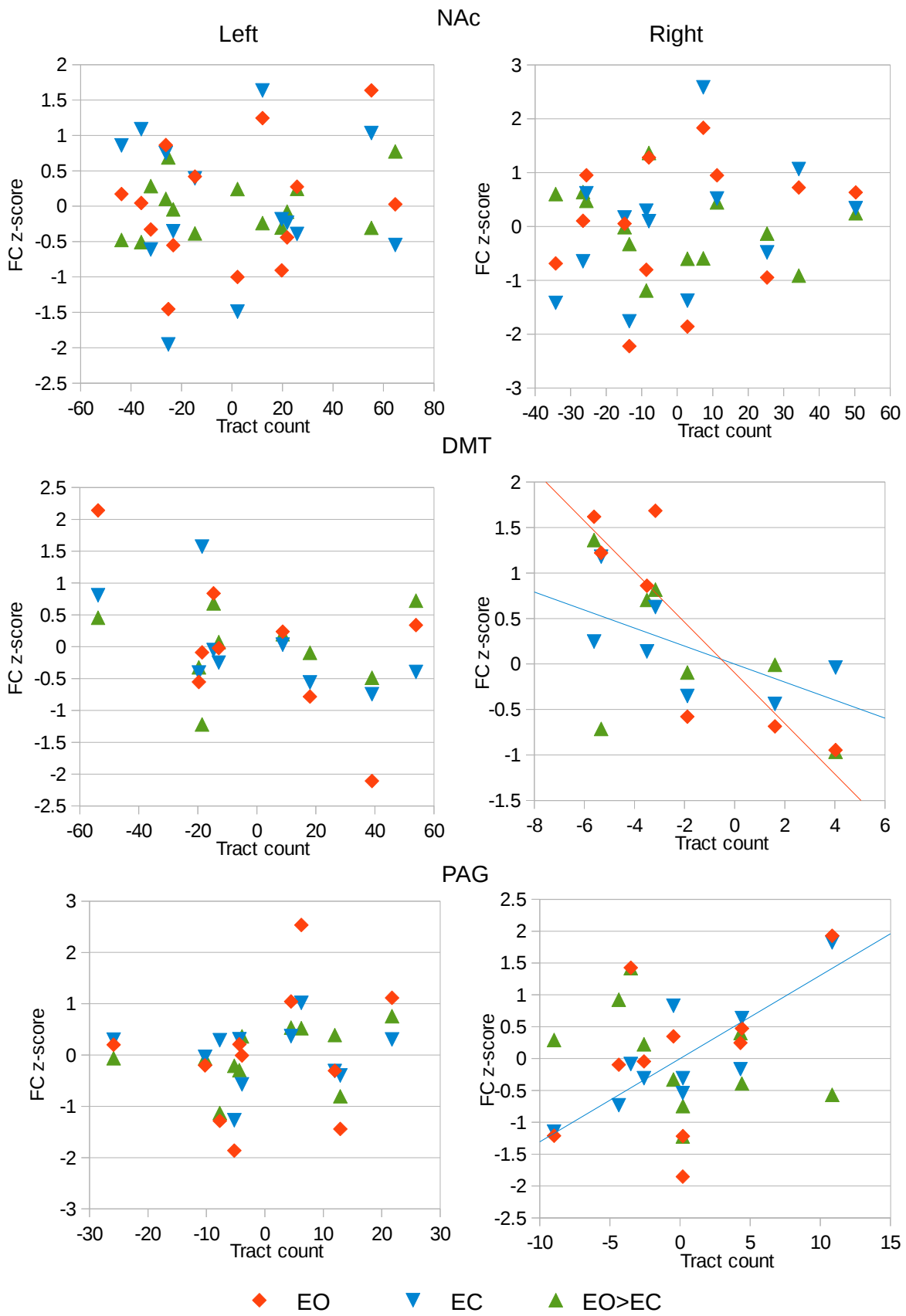


Supplementary figure 4a: Scatter plots for FC for all regions vs mPFC Glu/NAA in EO, EC and EO>EC conditions. Note that values are residuals following the removal of confounding variables.



Supplementary figure 4b: Scatter plots for FC for all regions vs tract count in EO, EC and EO>EC conditions. Note that values are residuals following the removal of confounding variables.