

Supplementary information, Figure S2

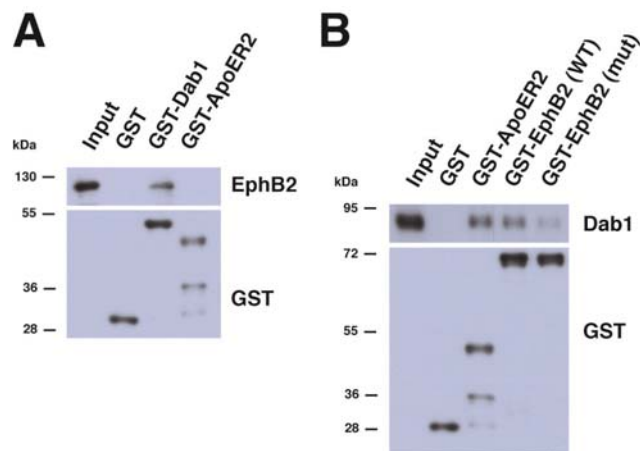


Figure 2 Interaction of the EphB2 intracellular domain with Dab1. **(A)** Pull-down of EphB2 from neuronal lysates by a recombinant GST-fusion protein containing the amino-terminal protein interaction (PI/PTB) domain of Dab1. Cortical neurons were lysed and incubated with GST control protein, GST-Dab1, and GST fusion protein containing the cytoplasmic tail of ApoER2. The ApoER2 intracellular domain (GST-ApoER2) does not interact with EphB2. Neuronal lysate was loaded for comparison (input, left lane). **(B)** Dab1 interacts with a GST fusion protein containing the full cytoplasmic tail of EphB2 (WT: wild-type sequence; mut: with inactivated DPXY motif). Neuronal lysate was loaded for comparison (input, left lane). GST fused with the ApoER2 intracellular domain was used as positive control. In **A** and **B**, western blotting with a GST-specific antibody was performed to demonstrate input of GST-fusion proteins.