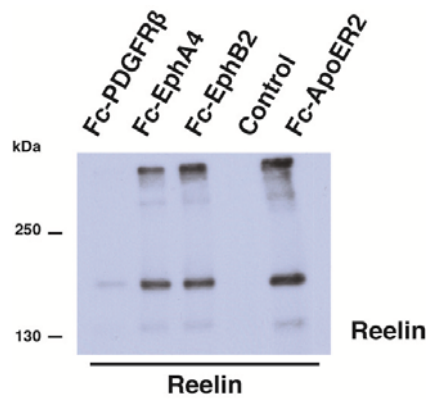


## Supplementary information, Figure S5



**Figure S5** Reelin binds to the extracellular domain of EphA subclass receptors. Recombinant Reelin was incubated with the Fc-tagged ectodomains of EphA4 and EphB2. After precipitation with protein A/G-beads, bound Reelin was detected by immunoblotting. Fc-ApoER2 served as a positive and Fc-PDGFR $\beta$  as negative control. Reelin was bound by the ectodomains of EphB2 and EphA4.