

Supplementary information

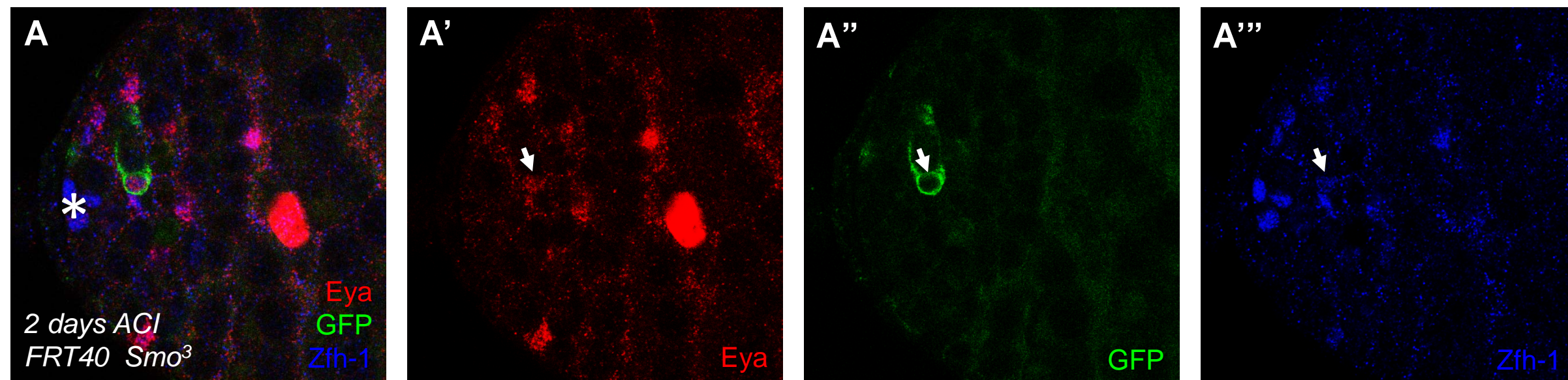


Figure S5 *Smo³* mutant CySCs undergo differentiation.

(A) Testis with *FRT40 Smo³* clones is immunostained to show GFP (green), Eya (red) and Zfh-1 (blue). The arrow shows a *Smo³* clone near the hub expresses a weak Zfh-1 and Eya, thus indicating that CySC without Smo undergoes differentiation. All the apices of testes are positioned to the left and asterisks indicate the hub cells.