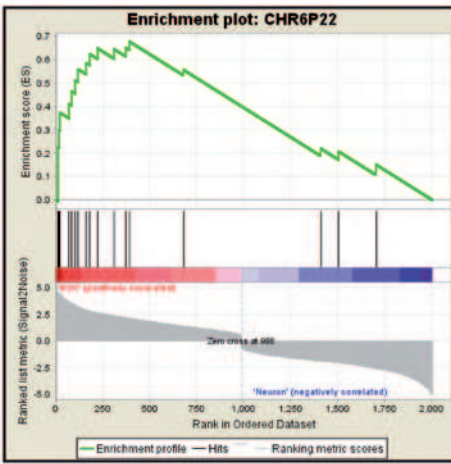


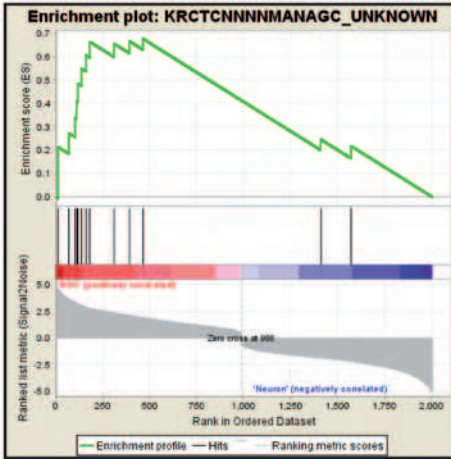
Figure S1A

G



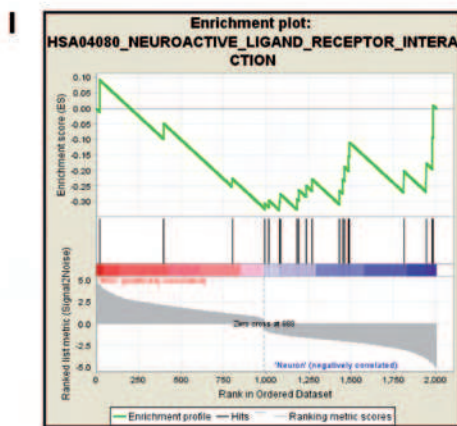
NSC		Neuron		SampleName
1234	1234	1234	1234	
				HIST1H4D HIST1H4D histone cluster 1, H4d
				HIST1H2AF HIST1H2AF histone cluster 1, H2af
				HIST1H2AA HIST1H2AA histone cluster 1, H2aa
				HIST1H4H HIST1H4H histone cluster 1, H4h
				HIST1H4F HIST1H4F histone cluster 1, H4f
				HIST1H2AR HIST1H2AR histone cluster 1, H2ar
				TCF19 TCF19 transcription factor 19 (SFI)
				HIST1H2AF HIST1H2AF histone cluster 1, H2af
				HIST1H2BA HIST1H2BA histone cluster 1, H2ba
				HIST1H1A HIST1H1A histone cluster 1, H1a
				HIST1H2BM HIST1H2BM histone cluster 1, H2bm
				MROAT1 MROAT1 membrane bound O-acyltransferase domain containing 1
				HIST1H1B HIST1H1B histone cluster 1, H1b
				CLIC1 CLIC1 chloride intracellular channel 1
				HIST1H2BR HIST1H2BR histone cluster 1, H2br
				HIST1H4C HIST1H4C histone cluster 1, H4c
				HIST1H2AC HIST1H2AC histone cluster 1, H2ac
				ID4 ID4 inhibitor of DNA binding 4, dominant negative helix-loop-helix protein
				GPLD1 GPLD1 glycosylphosphatidylinositol specific phospholipase D1

H

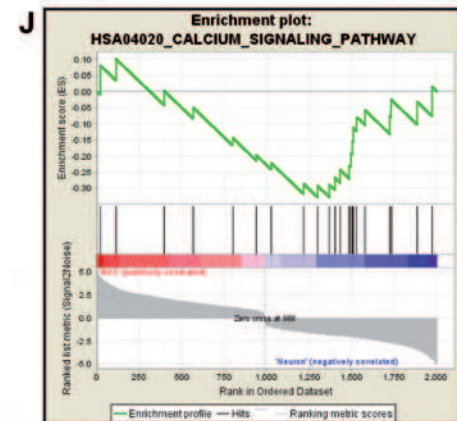


NSC		Neuron		SampleName
1234	1234	1234	1234	
				HIST1H2AF HIST1H2AF histone cluster 1, H2af
				HIST1H2AA HIST1H2AA histone cluster 1, H2aa
				HIST1H2AB HIST1H2AB histone cluster 1, H2ab
				HIST1H2AF HIST1H2AF histone cluster 1, H2af
				HIST1H2BH HIST1H2BH histone cluster 1, H2bh
				HIST1H2BA HIST1H2BA histone cluster 1, H2ba
				HIST1H2CA HIST1H2CA histone cluster 3, H2ca
				HIST1H1A HIST1H1A histone cluster 1, H1a
				HIST1H2BM HIST1H2BM histone cluster 1, H2bm
				HIST1H1B HIST1H1B histone cluster 1, H1b
				HIST1H2BR HIST1H2BR histone cluster 1, H2br
				UREC1 UREC1 ubiquitin-conjugating enzyme E2C
				HIST1H2AC HIST1H2AC histone cluster 1, H2ac
				PHACTR3 PHACTR3 phosphatase and actin regulator 3

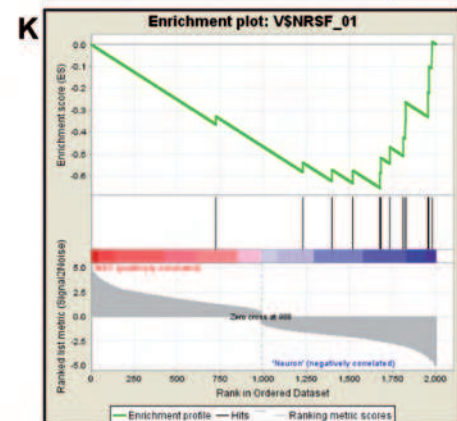
Figure S1G-H



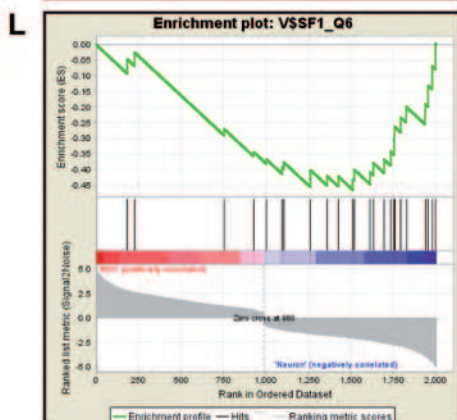
NSC	Neuron	SampleName		
1234	1234	CHEM3	CHEM3	cholinergic receptor, muscarinic 3
		P2RX7	P2RX7	purinergic receptor P2X, ligand-gated ion channel, 7
		ADBR2	ADBR2	adrenergic, beta-2-, receptor, surface
		GR12	GR12	glutamate receptor, ionotropic, delta 2
		SSTR5	SSTR5	somatostatin receptor 5
		GR1A	GR1A	glutamate receptor, ionotropic, AMPA 1
		GRB35	GRB35	G protein-coupled receptor 35
		MCHR2	MCHR2	melanin-concentrating hormone receptor 2
		GR13	GR13	glutamate receptor, ionotropic, kainate 3
		GABRE2	GABRE2	gamma-aminobutyric acid (GABA) B receptor, 2
		GHR	GHR	growth hormone receptor
		ADORA2A	ADORA2A	adenosine A2A receptor
		GR1A	GR1A	glutamate receptor, ionotropic, AMPA 1
		OPRL1	OPRL1	opioid receptor-like 1
		ADORA1	ADORA1	adrenergic, alpha-1A-, receptor
		MCHR	MCHR	melanocortin 4 receptor
		NPY1R	NPY1R	neuropeptide Y receptor Y1
		ADORA2A	ADORA2A	adenosine A2A receptor
		P2RY1	P2RY1	purinergic receptor P2Y, G-protein coupled, 1
		GR12A	GR12A	glutamate receptor, ionotropic, kainate 2



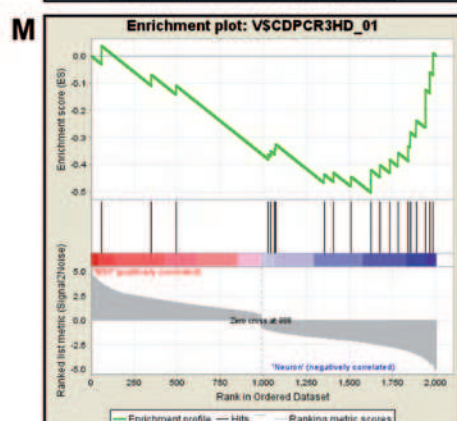
NSC	Neuron	SampleName		
1234	1234	CHEM3	CHEM3	cholinergic receptor, muscarinic 3
		CAMK2R	CAMK2R	calcium/calmodulin-dependent protein kinase (CaM kinase) II beta
		P2RX7	P2RX7	purinergic receptor P2X, ligand-gated ion channel, 7
		CAIM2	CAIM2	calmodulin 2 (phosphorylase kinase, delta)
		ADBR2	ADBR2	adrenergic, beta-2-, receptor, surface
		MYLK	MYLK	myosin, light chain kinase
		SLC12A1	SLC12A1	solute carrier family 12, sodium/calcium exchanger, member 1
		EPOR4	EPOR4	erythropoietin receptor 4 (avian)
		PLCB1	PLCB1	phospholipase C, beta 1 (phosphoinositide-specific)
		CACNA1A	CACNA1A	calcium channel, voltage-dependent, L type, alpha 1A subunit
		CACNA1B	CACNA1B	calcium channel, voltage-dependent, L type, alpha 1B subunit
		ADORA2A	ADORA2A	adenosine A2A receptor
		ADORA1	ADORA1	adrenergic, alpha-1A-, receptor
		PRKAI	PRKAI	phosphorylase kinase, alpha 1 (muscle)
		GNAT	GNAT	guanine nucleotide binding protein (G protein), alpha activating activity polypeptide, olfactory type 2
		EYF2	EYF2	ryanodine receptor 2 (cardiac)
		PTK2R	PTK2R	protein tyrosine kinase 2 beta
		PRKG1	PRKG1	phosphorylase kinase, gamma 1 (muscle)
		ATP2B3	ATP2B3	ATPase, class transporting, plasma membrane 3
		PDGFRA	PDGFRA	platelet-derived growth factor receptor, alpha polypeptide
		CAMK2D	CAMK2D	calcium/calmodulin-dependent protein kinase (CaM kinase) II delta
		PLCB1	PLCB1	phospholipase C, delta 1



NSC	Neuron	SampleName		
1234	1234	HEF1	HEF1	heiry and enhancer of split 1 (Drosophila)
		DMG	DMG	oligodendrocyte myelin glycoprotein
		INA	INA	interneurin neuronal intermediate filament protein, alpha
		TRIMS	TRIMS	tripartite motif-containing 6
		DBC1	DBC1	deleted in bladder cancer 1
		P2RX7	P2RX7	purinergic receptor P2X, ligand-gated ion channel, 7
		RPH3A	RPH3A	rahphilin 3A homolog (mouse)
		SVTA	SVTA	synaptotagmin IV
		SHAP2	SHAP2	synaptonemal-associated protein, 29kDa
		OGDH	OGDH	oxoglutarate dehydrogenase-like
		FLAV13	FLAV13	FLAV (lethronic lethal, abnormal vision, Drosophila)-like 3 (Hu antigen C)
		GDAP11	GDAP11	ganglioside-induced differentiation-associated protein 1-like 1
		CHG1	CHG1	chromogranin 3 (parathyroid secretory protein 1)



NSC	Neuron	SampleName		
1234	1234	SPR4	SPR4	sporadic protein 4
		RIB1R	RIB1R	RIB1 budding uninhibited by hexamides 1 homolog beta (yeast)
		CHRF1	CHRF1	chrysalin 1
		KCNK1	KCNK1	potassium voltage-gated channel, Shaw-related subfamily, member 1
		SLITERR1	SLITERR1	SLIT and NTRG-like family, member 1
		PANK1	PANK1	panthothenate kinase 1
		CATSPER2	CATSPER2	cation channel, sperm associated 2
		NEFL	NEFL	nebulin
		FRYDC	FRYDC	F-fox protein 2
		MAL	MAL	mal, T-cell differentiation protein
		SCN1A	SCN1A	sodium-related receptor, LDR class, 1 repeat-containing
		SLC24A4	SLC24A4	solute carrier family 24, facilitated glucose transporter, member 4
		PNMT	PNMT	potassium channel, subfamily F, member 1
		SPN47A	SPN47A	scaphorin 7A, GPI membrane anchor (John Milton Hagen blood group)
		TUBB4	TUBB4	tubulin, beta 4
		ABAT	ABAT	4-aminobutyrate aminotransferase
		RPH3A	RPH3A	rahphilin 3A homolog (mouse)
		HR23C	HR23C	HR23 family member 3
		SLC7A8	SLC7A8	solute carrier family 7 (glycerol-3-phosphate transporter), member 8
		ABHD3	ABHD3	abhydrolase domain containing 3
		OGDH	OGDH	oxoglutarate dehydrogenase-like
		ATP1A4	ATP1A4	ATPase, Na/K+ transporting, alpha 4 polypeptide
		FLAV13	FLAV13	FLAV (lethronic lethal, abnormal vision, Drosophila)-like 3 (Hu antigen C)
		CHGA	CHGA	chromogranin 3 (parathyroid secretory protein 1)
		FDX5	FDX5	fibronectin type III domain containing 5



NSC	Neuron	SampleName		
1234	1234	TIMELESS	TIMELESS	timeless homolog (Drosophila)
		IFED2	IFED2	interferon-related developmental regulator 2
		SLC12A2	SLC12A2	solute carrier family 12, member 2
		ITGA7	ITGA7	integrin, alpha 7
		NR3C2	NR3C2	nuclear receptor subfamily 3, group C, member 2
		STPAP2	STPAP2	six transmembrane epithelial antigen of the prostate 2
		BRN114	BRN114	brn-like 4, RNA binding protein (Drosophila)
		EFH15	EFH15	EFH finger protein 15
		FEEM14	FEEM14	FE domain containing 14
		DIO2	DIO2	deiodinase, iodothyronine, type II
		DEP1D	DEP1D	dipeptidyl-peptidase 1D
		DEP2	DEP2	dipeptidyl-peptidase 2
		DBC1	DBC1	deleted in bladder cancer 1
		RPH3A	RPH3A	rahphilin 3A homolog (mouse)
		MYT1	MYT1	myelin transcription factor 1
		ELF1A	ELF1A	ElF1-like factor 15
		CMD3	CMD3	CBR and Sushi multiple domains 3
		CAMK2D	CAMK2D	calcium/calmodulin-dependent protein kinase (CaM kinase) II delta
		ACCN2	ACCN2	aniloride-sensitive cation channel 2, neuronal
		IL1RAP1	IL1RAP1	interleukin 1 receptor accessory protein-like 1
		KCNK1	KCNK1	potassium voltage-gated channel, Shaker-related subfamily, member 1 (epileptic ataxia with myoclonia)
		GR12A	GR12A	glutamate receptor, ionotropic, kainate 2

Figure S11-M

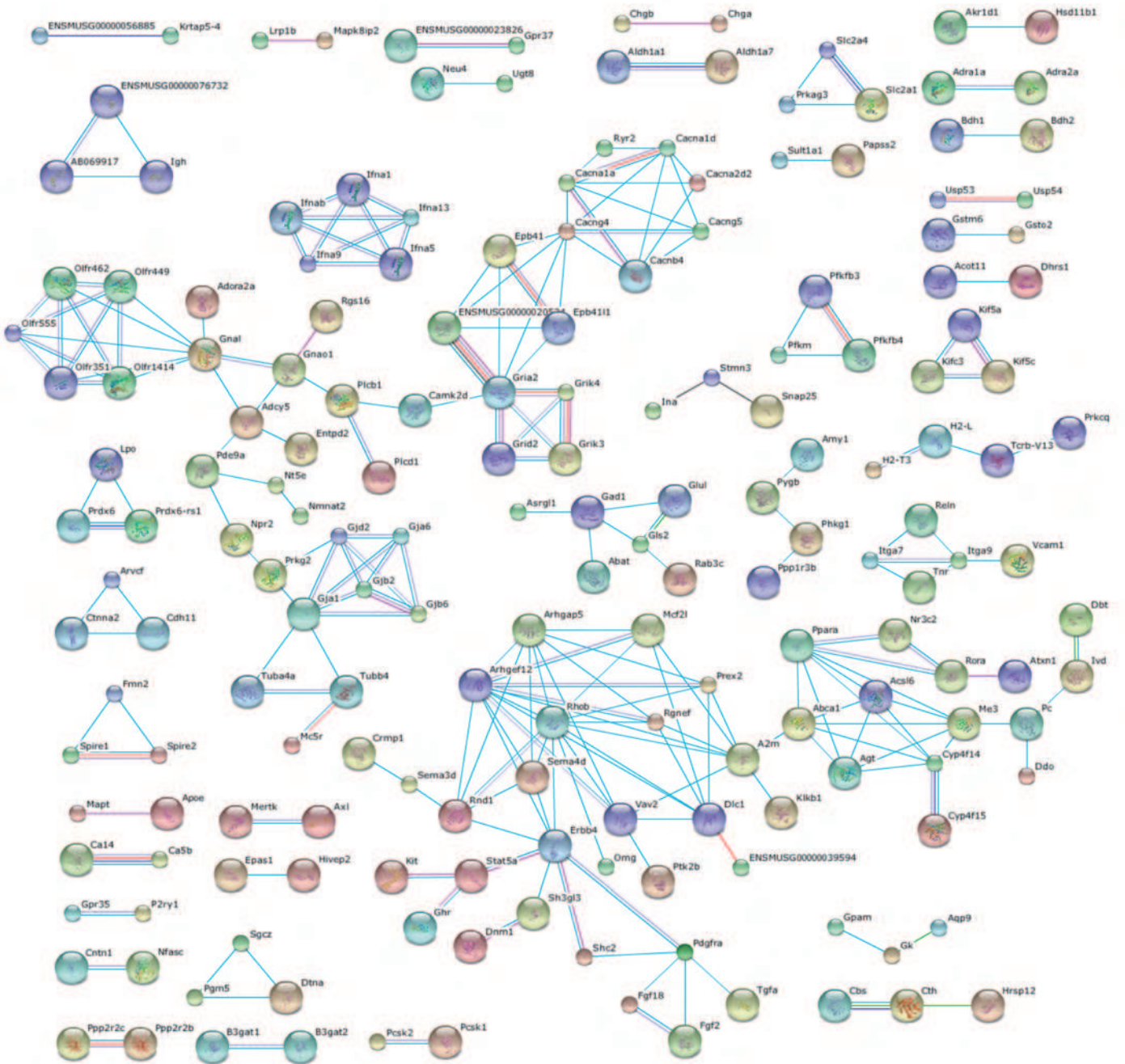


Figure S1S

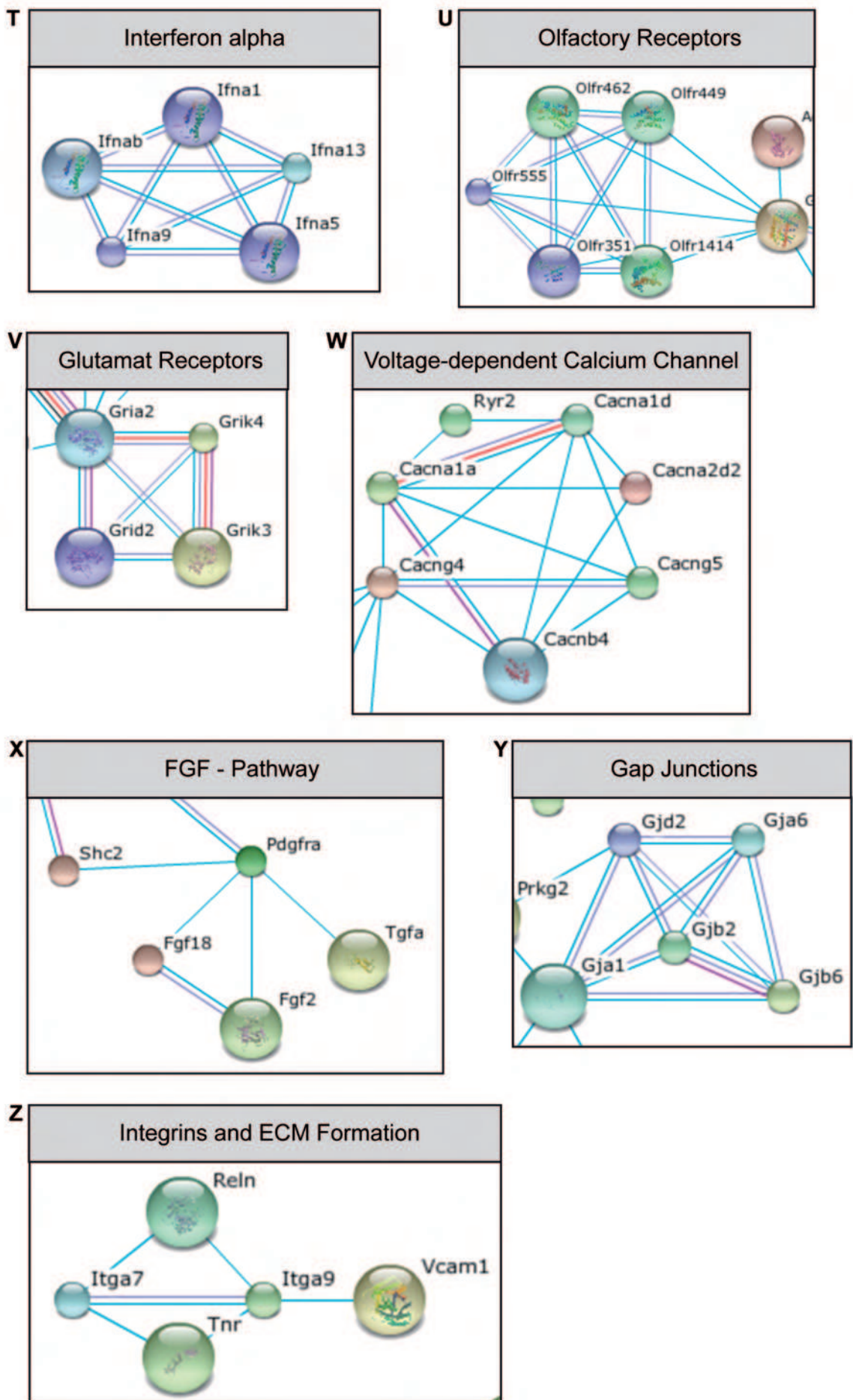


Figure S1T-Z

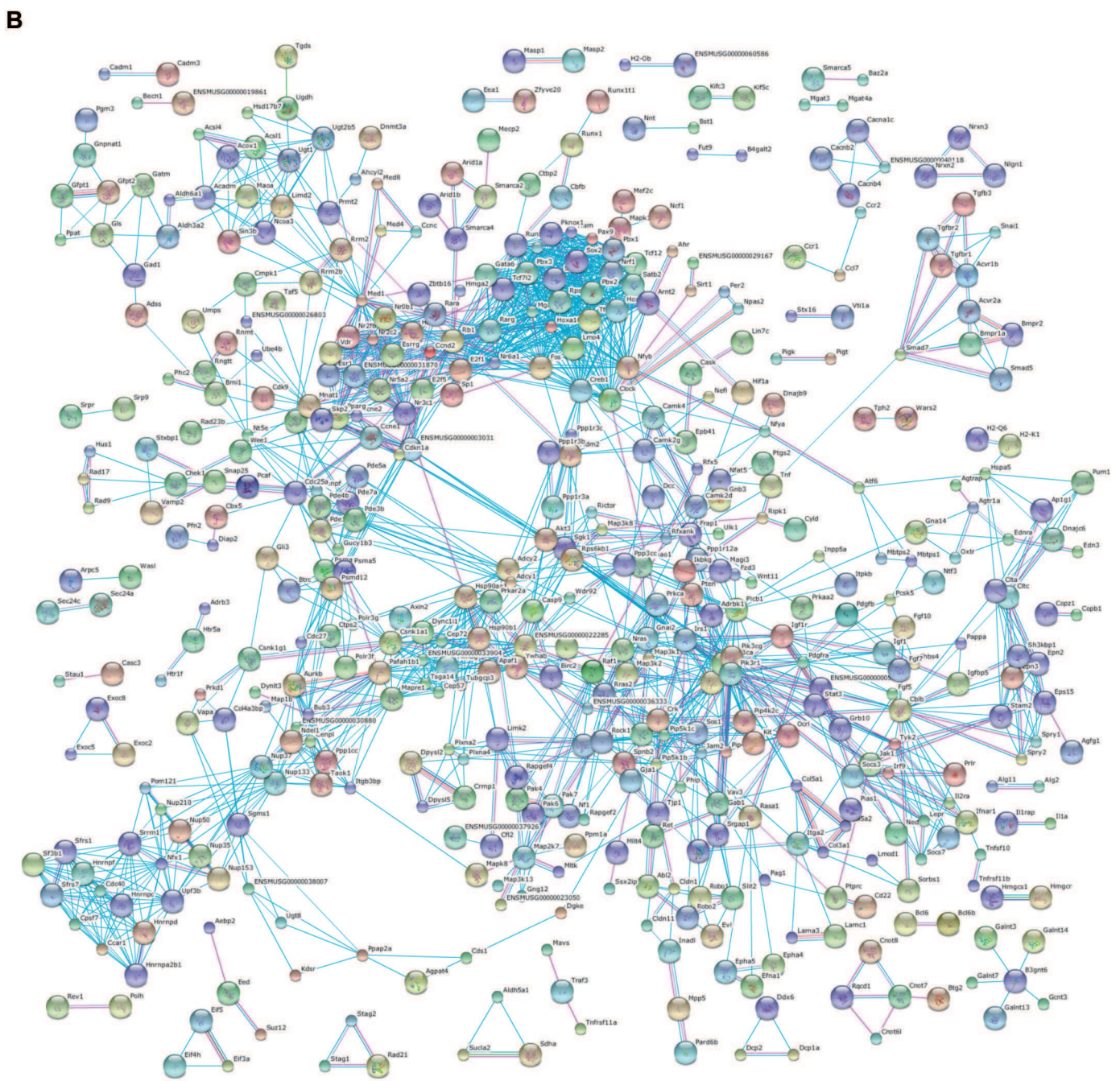
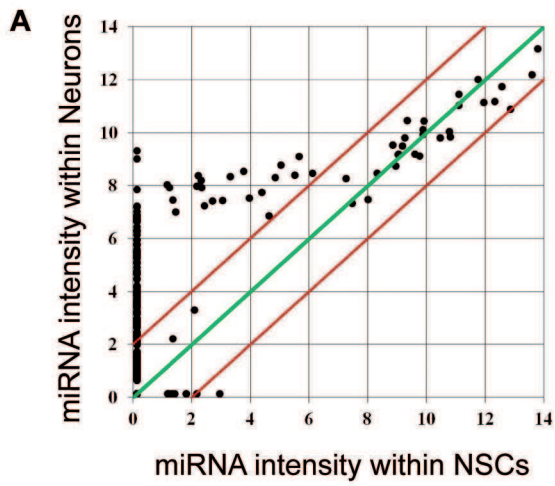


Figure S2A-B

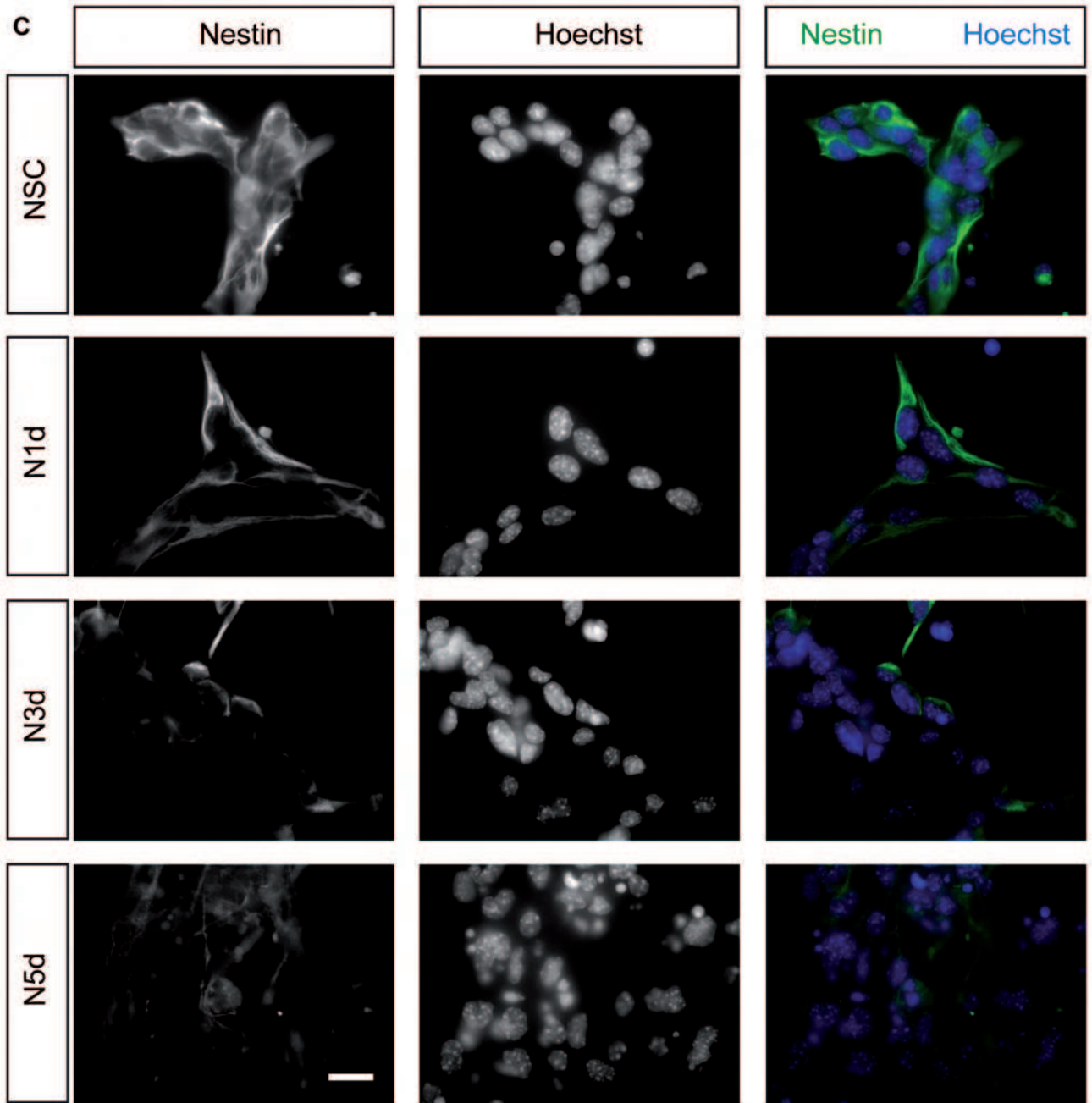


Figure S2C

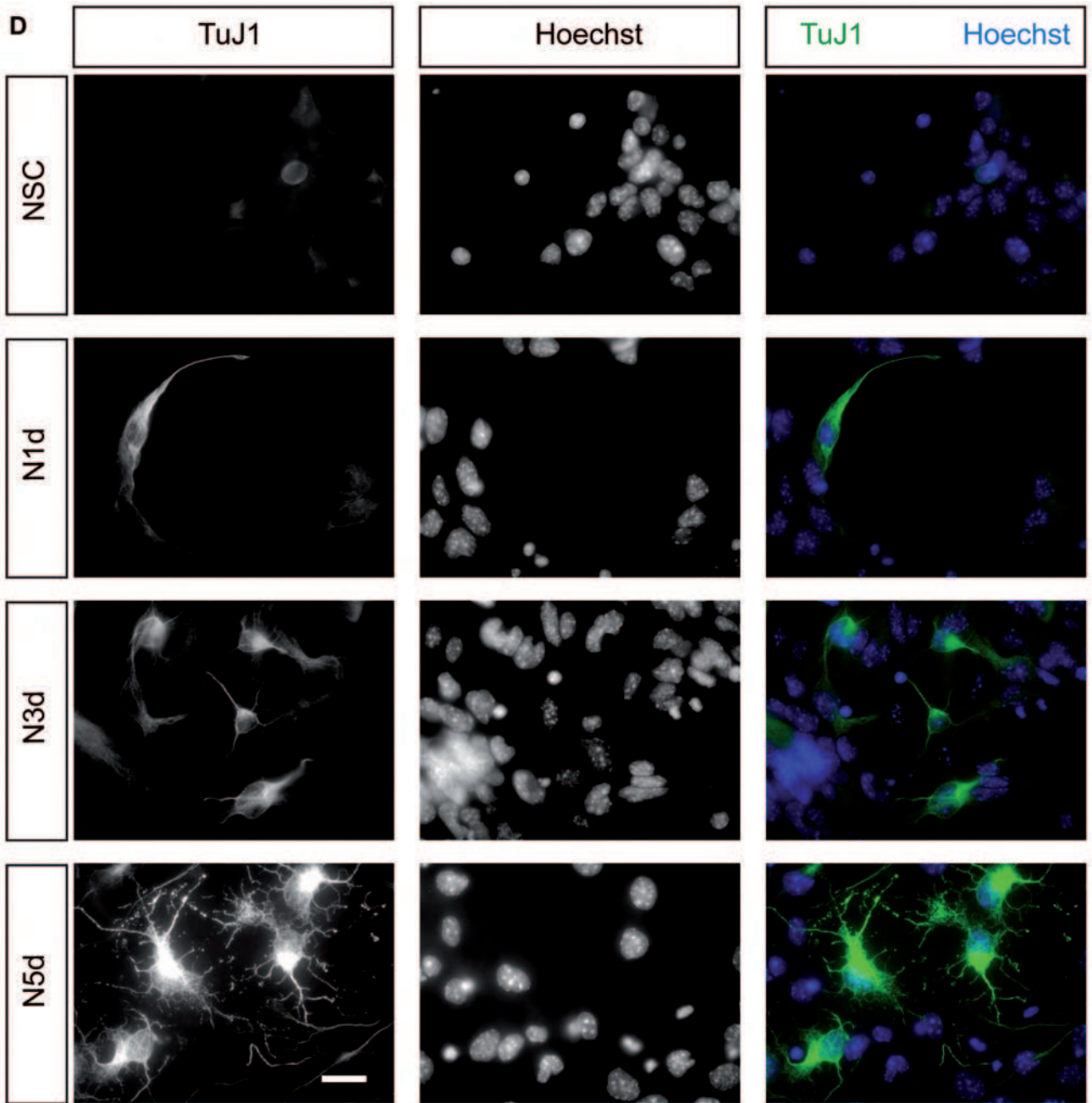


Figure S2D

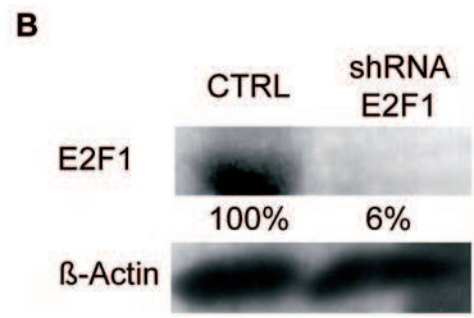
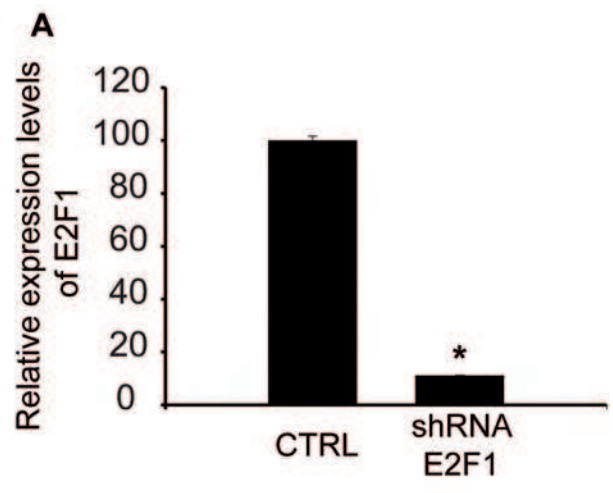
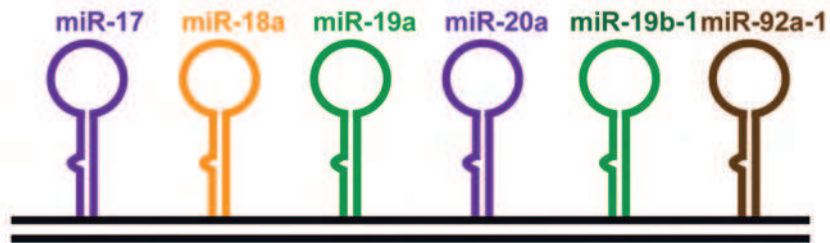


Figure S3

Cluster miR-17~92



miR-17 family
miR-18 family
miR-19 family
miR-92 family

Cluster miR-106a~363



Sequences of E2F1 associated miRNAs

Mmu-miR-17	CAAAGUGCUUACAGUGCAGGUAG
Mmu-miR-20a	UAAAGUGCUUAUAGUGCAGGUAG
Mmu-miR-20b	CAAAGUGCUCAUAGUGCAGGUAG
Mmu-miR-106a	CAAAGUGCUAACAGUGCAGGUAG
Mmu-miR-18a	UAAGGUGCAUCUAGUGCAGAUAG

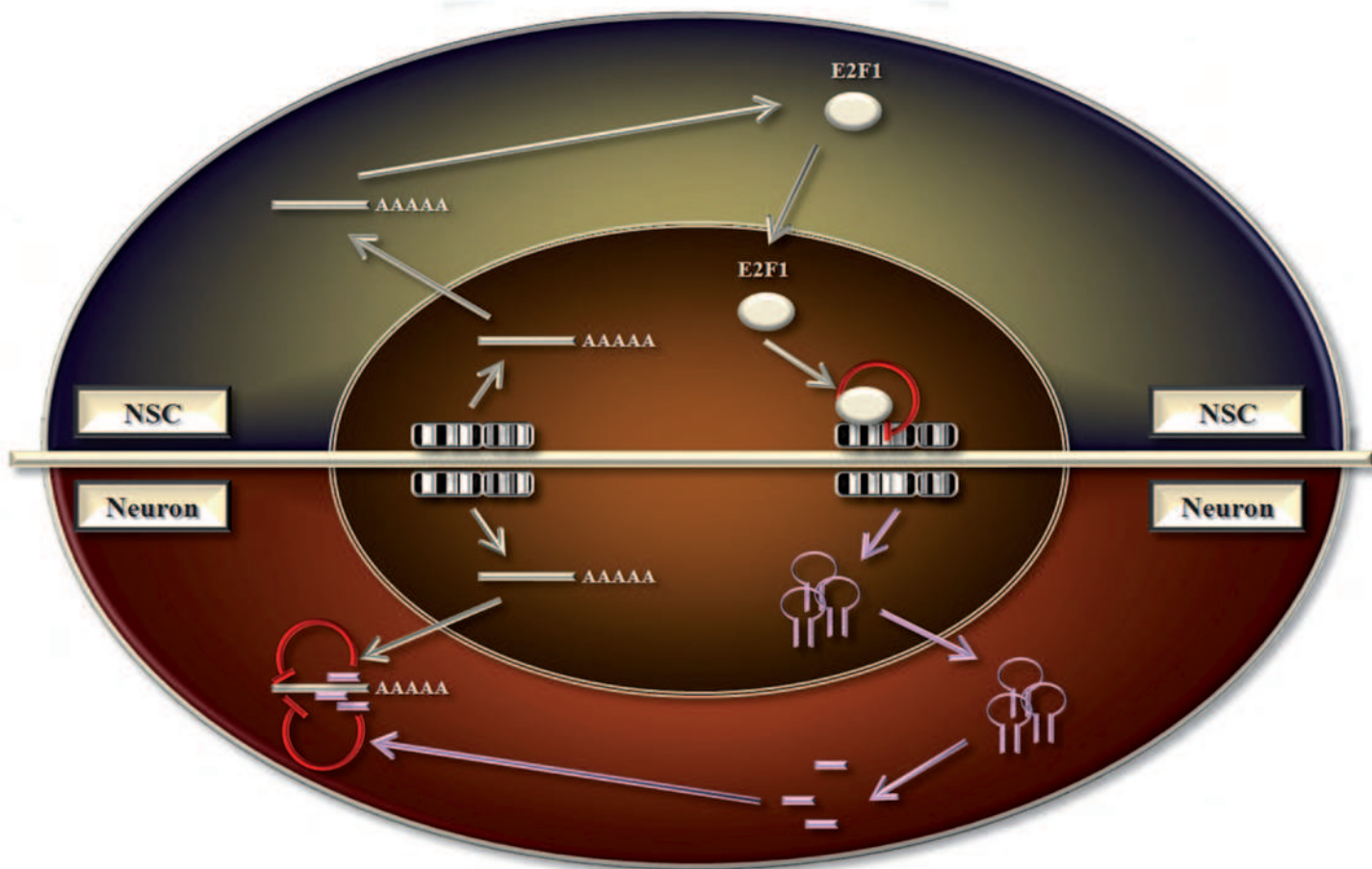


Figure S5

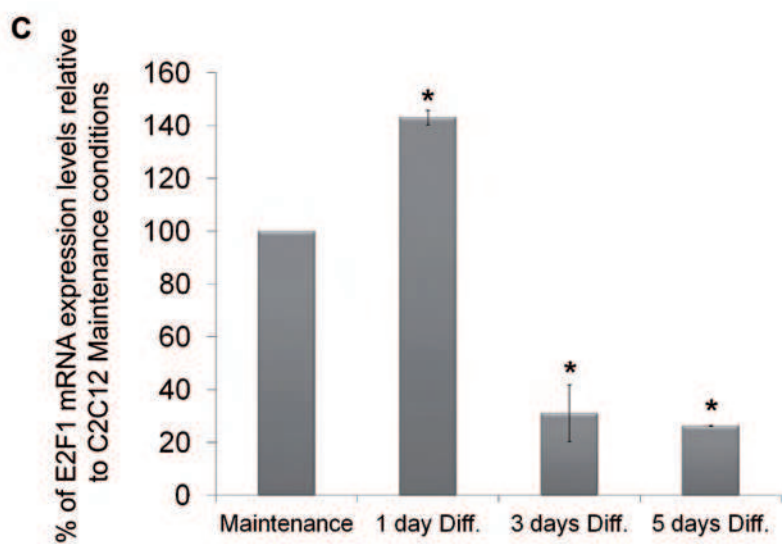
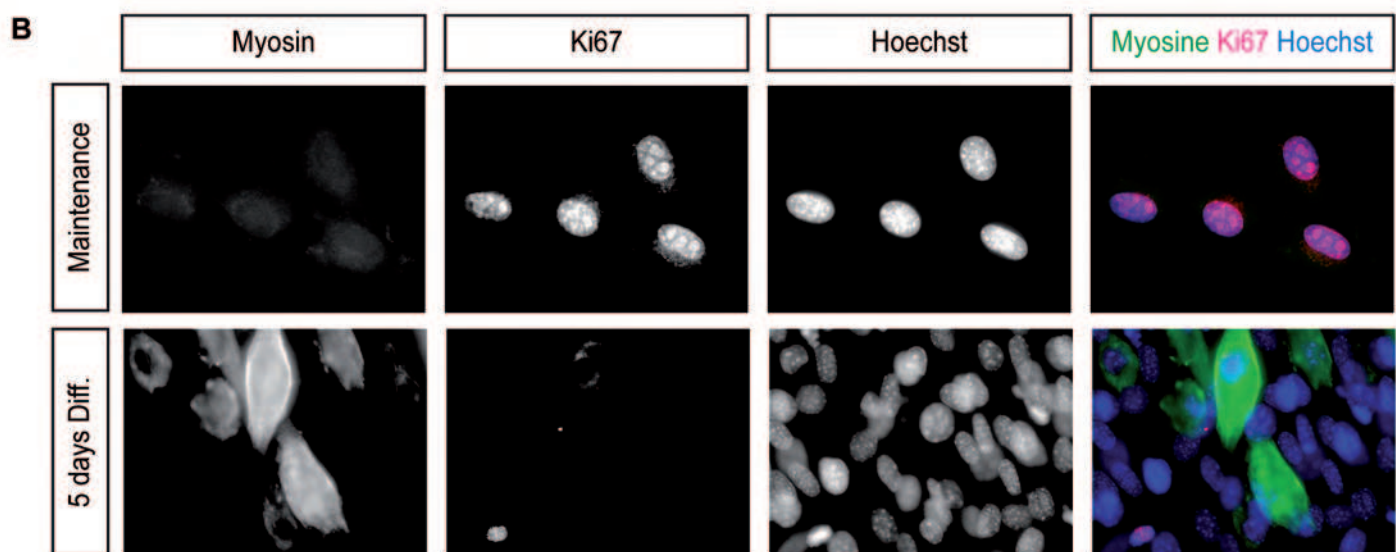
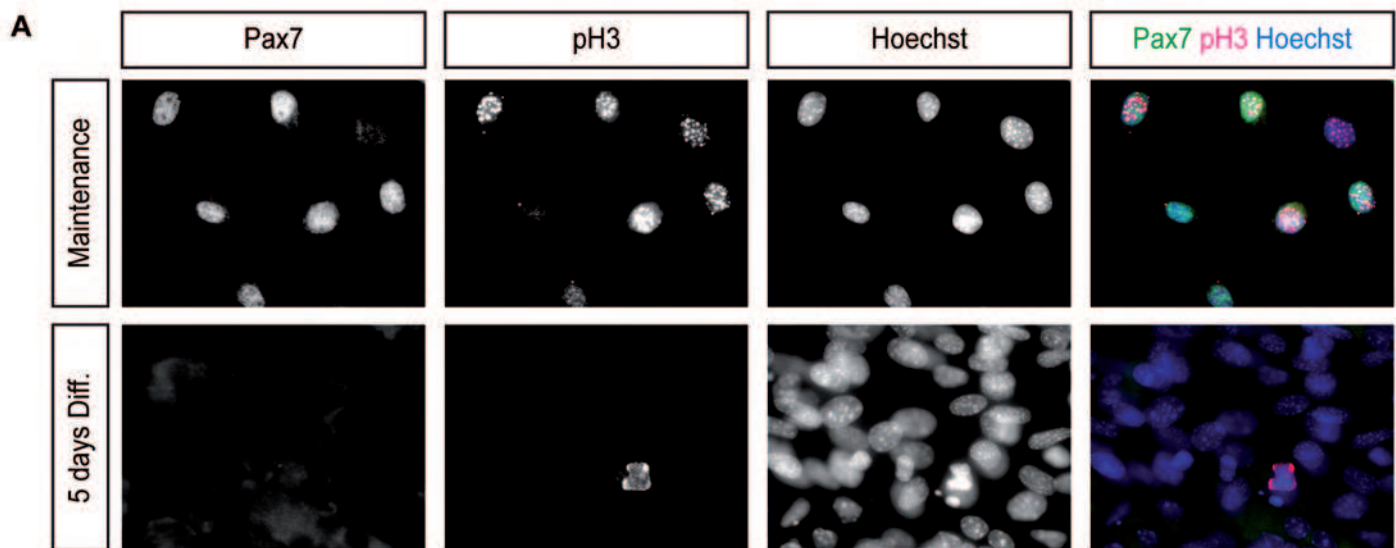


Figure S6