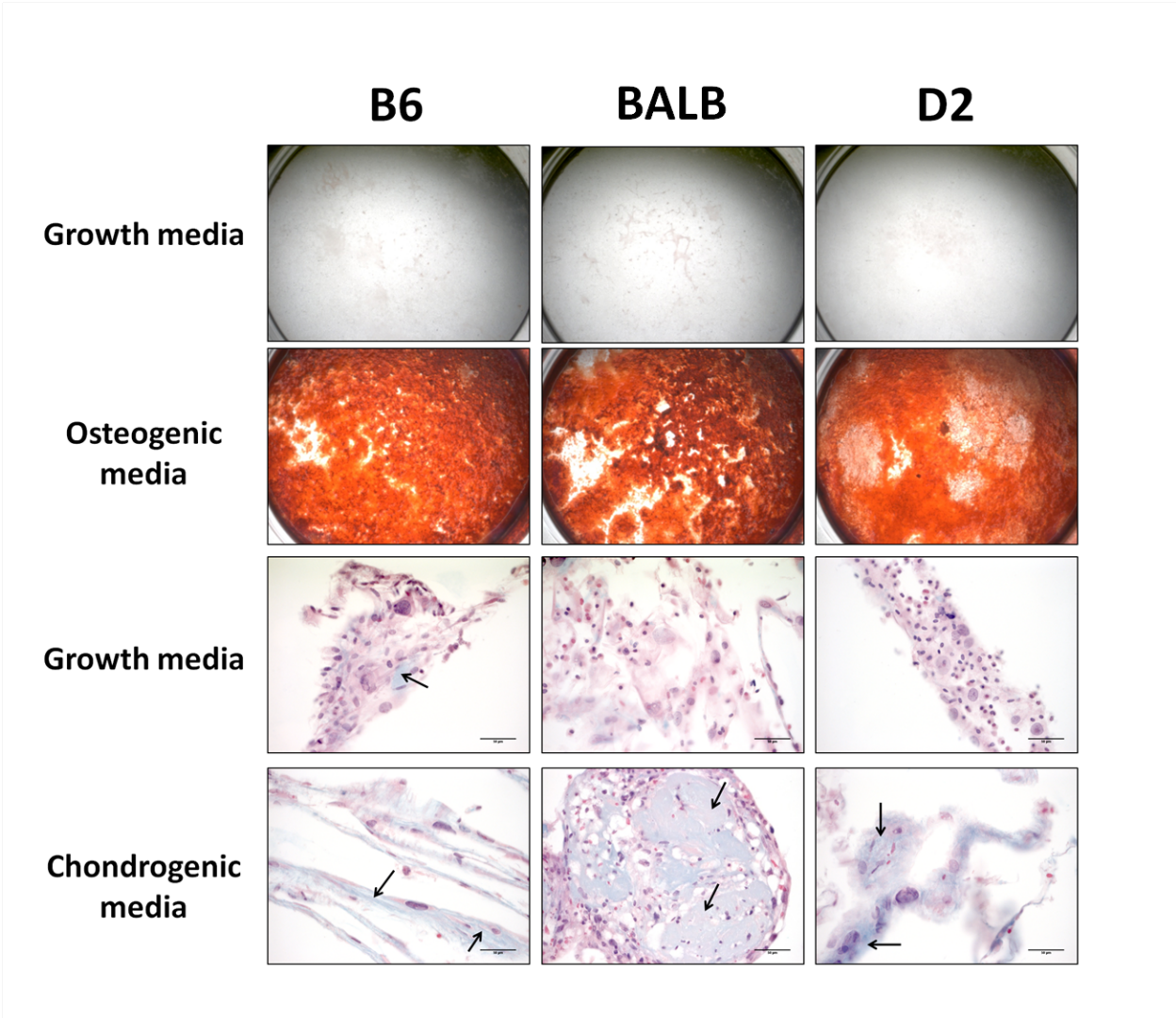


Figure S1. Histological staining of differentiated ADSCs.



B6, BALB, and D2 ADSCs were cultured and differentiated for 4 weeks into osteogenic or chondrogenic lineages. Cells grown in normal growth media for that time were used as negative controls. Cells were stained using either alizarin red (osteogenic) or alcian blue/nuclear fast red (chondrogenic, as specified by arrows). Pictures were captured using a Leica microscope and are representative of three independent experiments.