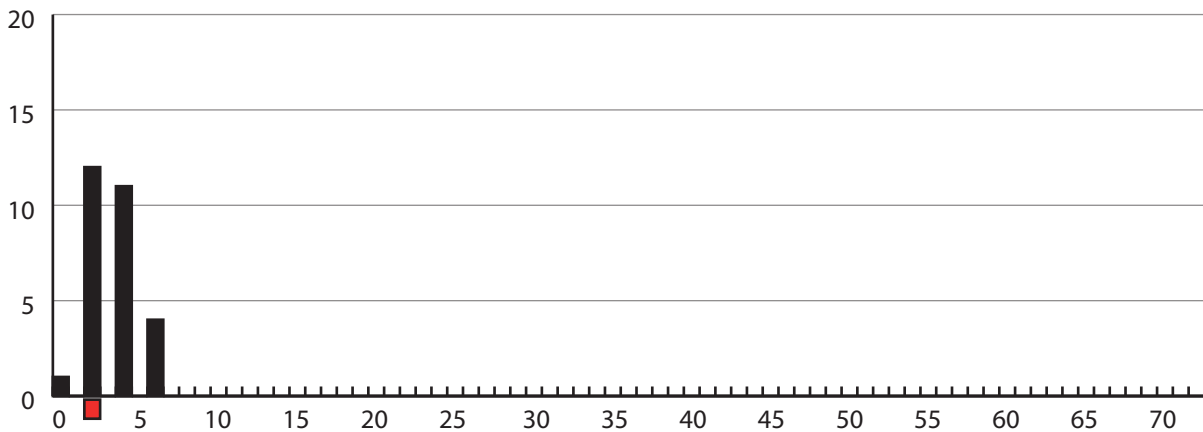


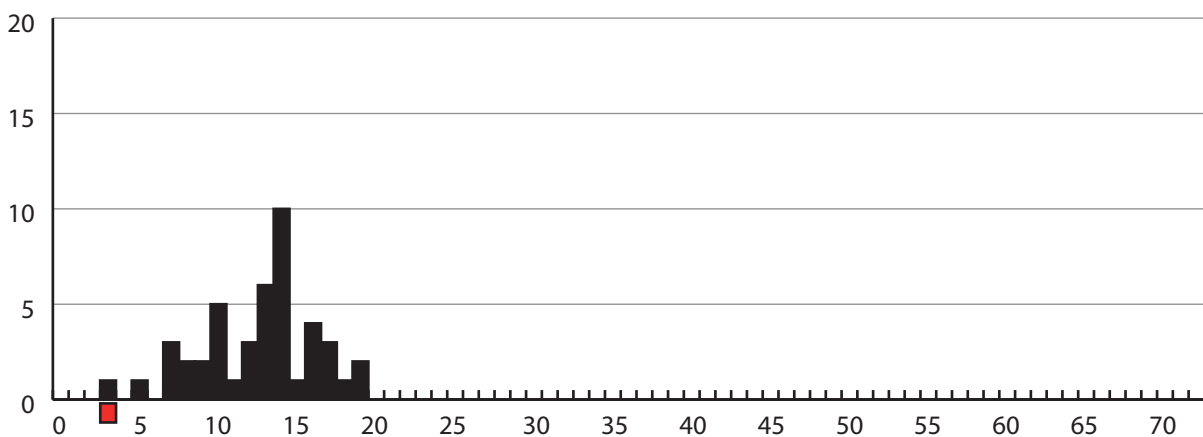
Supporting Information Fig. S1

Fig. S1 Frequency distribution of pairwise genotypic differences (x -axis) between pairs of individuals (y -axis). Red square indicates the threshold value based on the 96% repeatability counted for each sample separately.

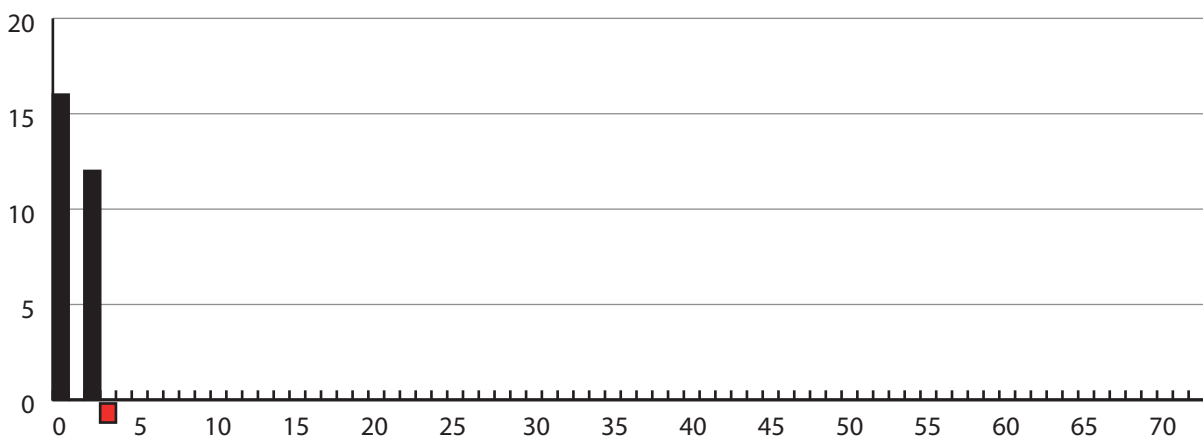
Ptl2650 *Drymocallis arguta* - 50 AFLP fragments



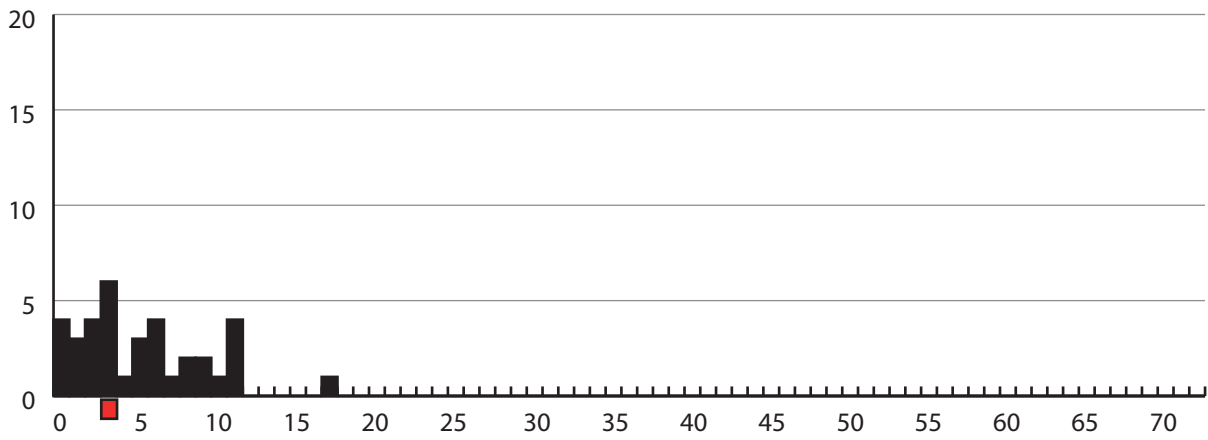
Ptl4731 *Potentilla calabra* - 73 AFLP fragments



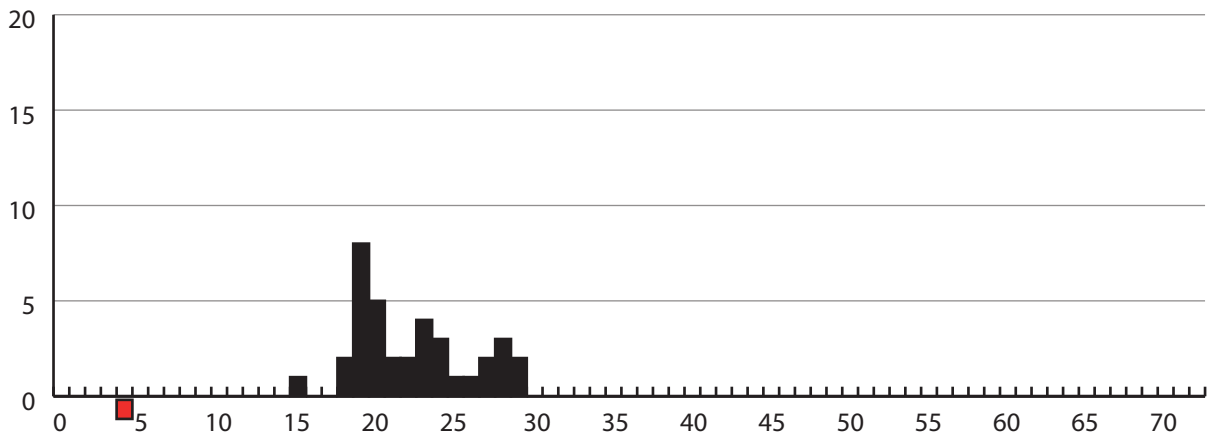
Ptl8202 *Potentilla indica* - 78 AFLP fragments



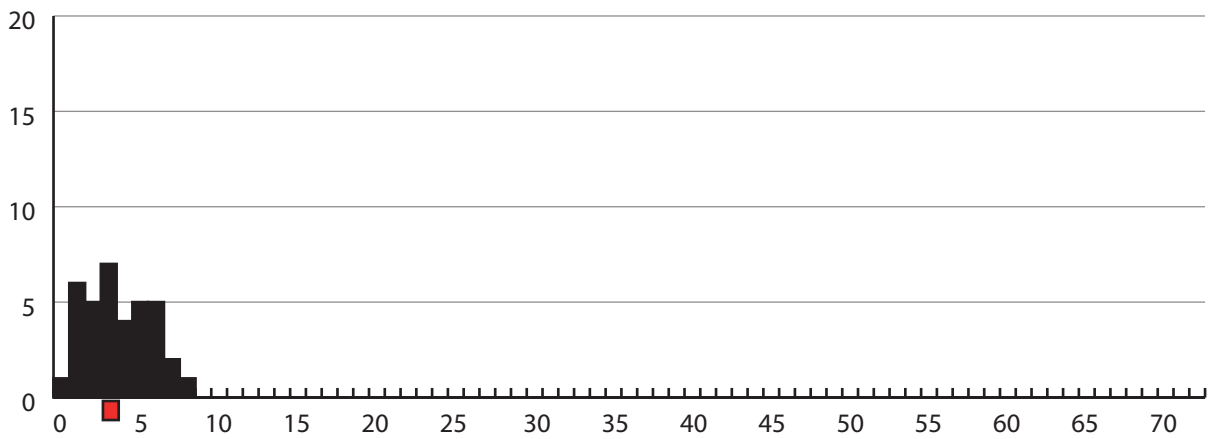
PtI8224 *Potentilla micrantha* - 70 AFLP fragments



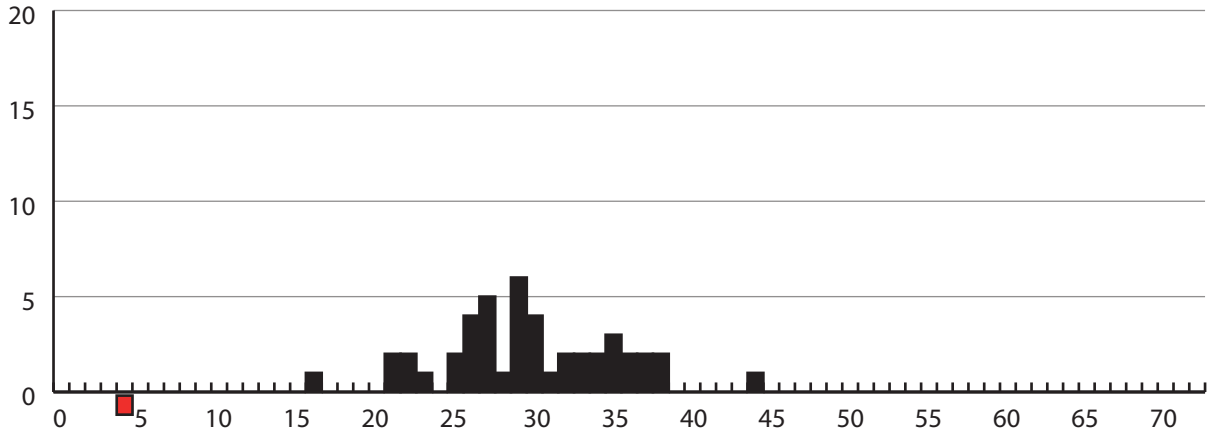
PtI8249 *Potentilla incana* - 105 AFLP fragments



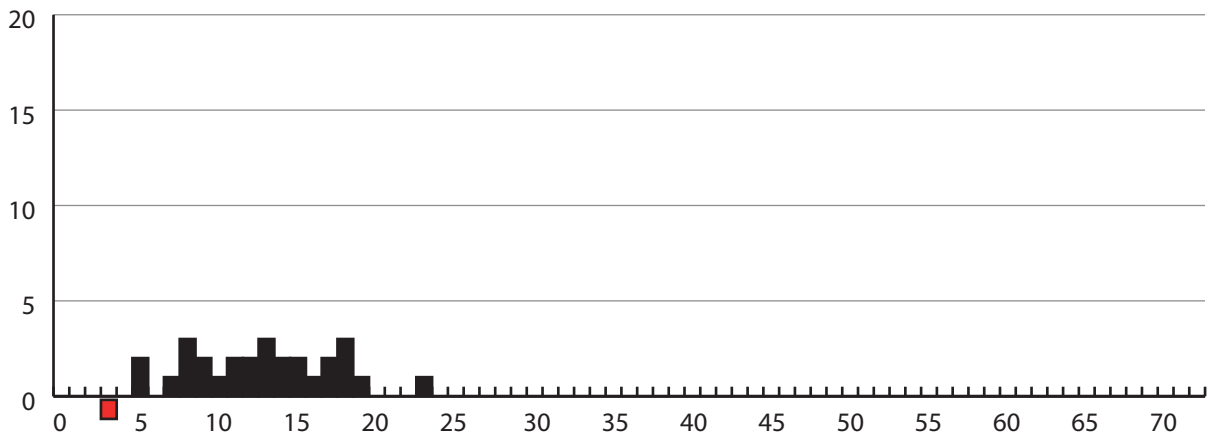
PtI8407 *Sibbaldia procumbens* - 71 AFLP fragments



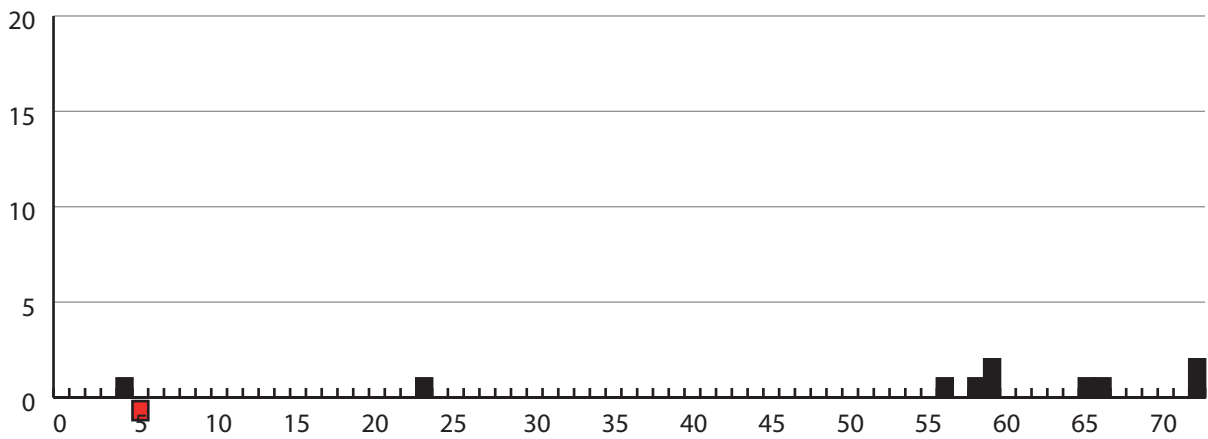
Ptl8410 *Comarum palustre* - 108 AFLP fragments



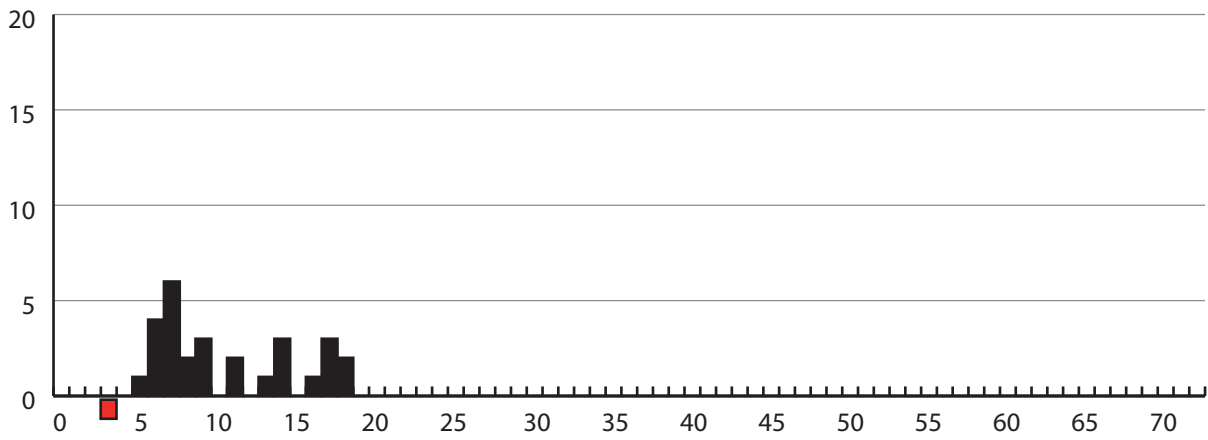
Ptl8411 *Dasiphora fruticosa* - 69 AFLP fragments



Ptl8413 *Sibbaldia tridentata* - 114 AFLP fragments



PtI8415 *Argentina anserina* - 72 AFLP fragments



PtI8418 *Horkeliella purpurascens* - 73 AFLP fragments

