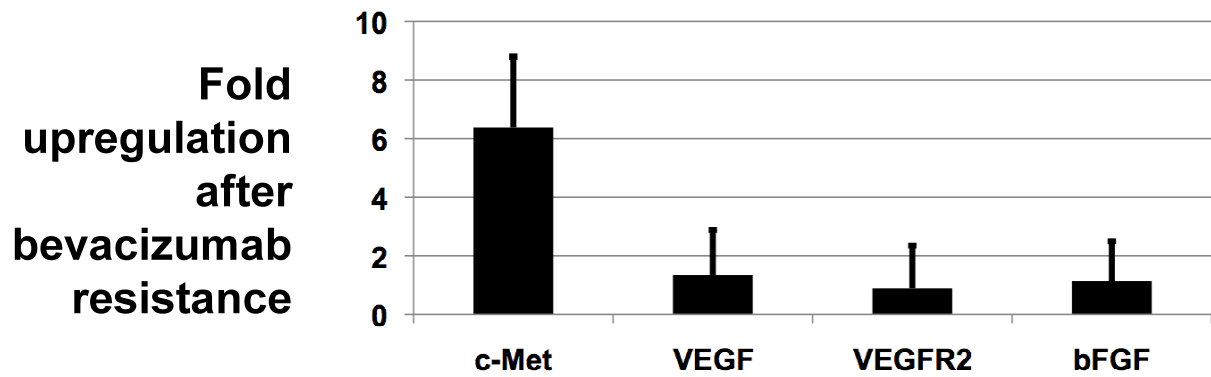
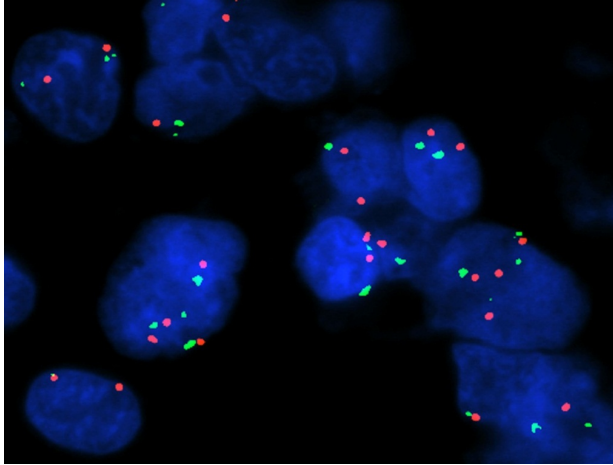


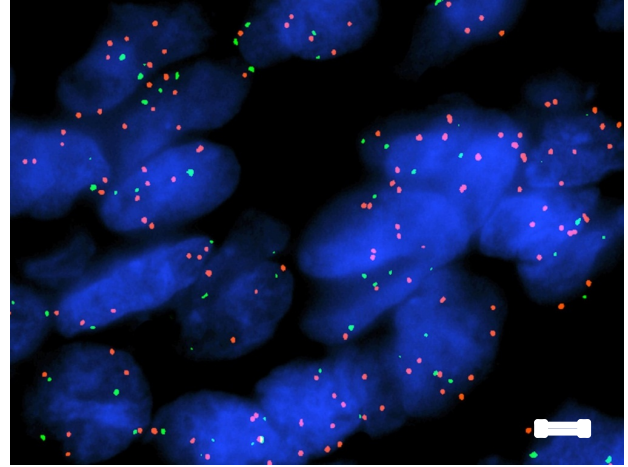
## Supplementary Figure S1



## Supplementary Figure S2

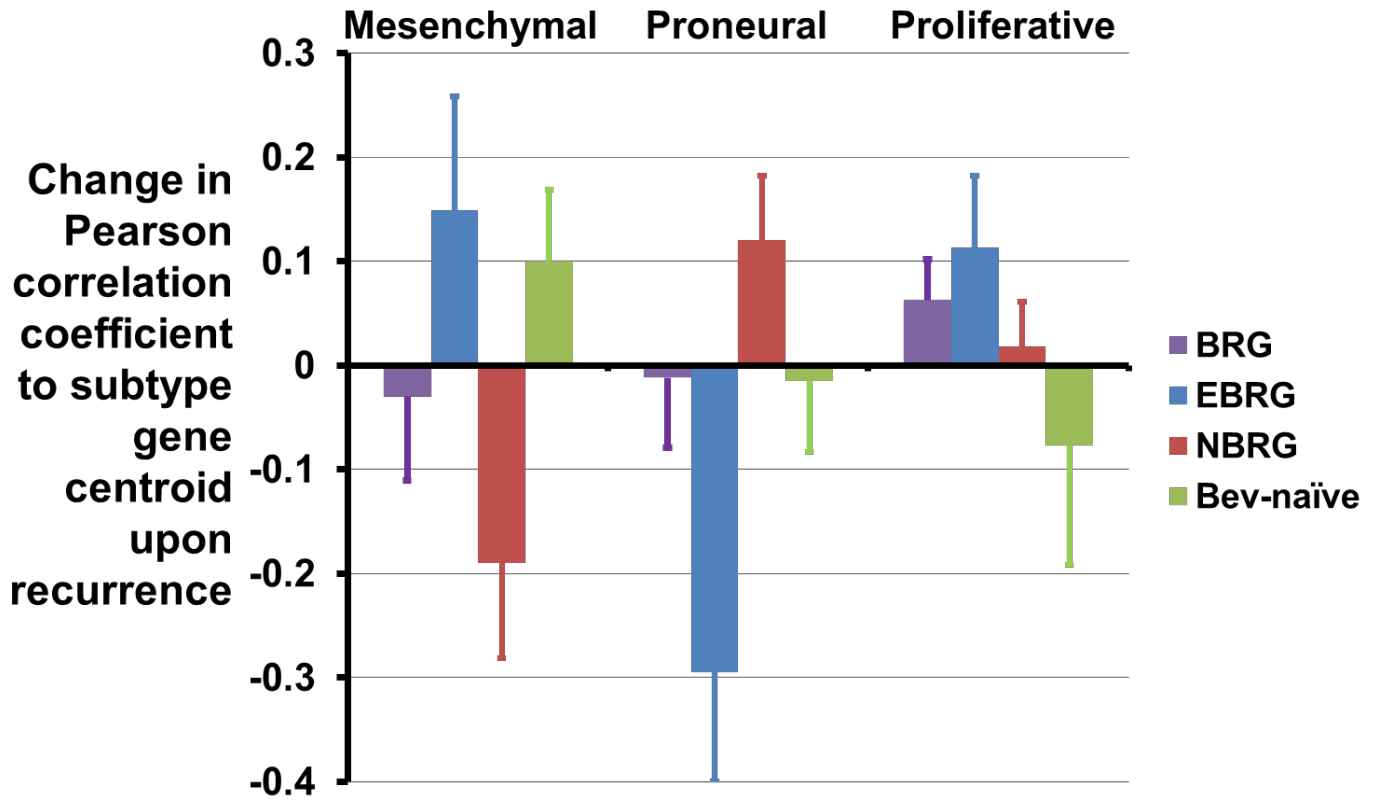


**Polysomy 7**



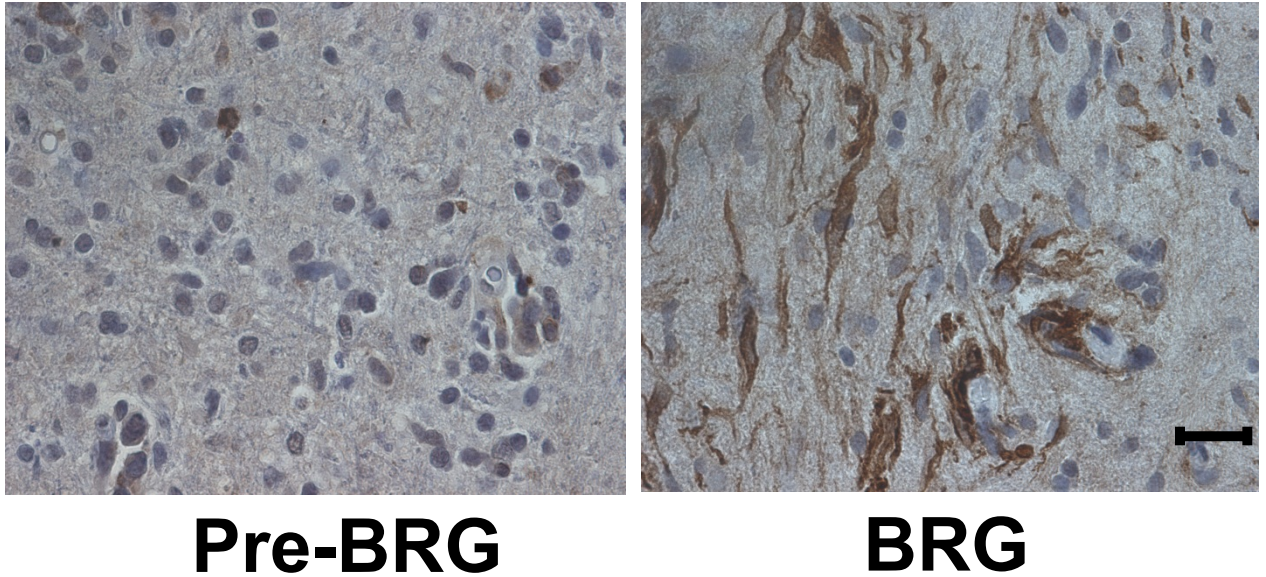
**c-Met amplification**  
(seen in only one of 20 cases)

# Supplementary Figure S3

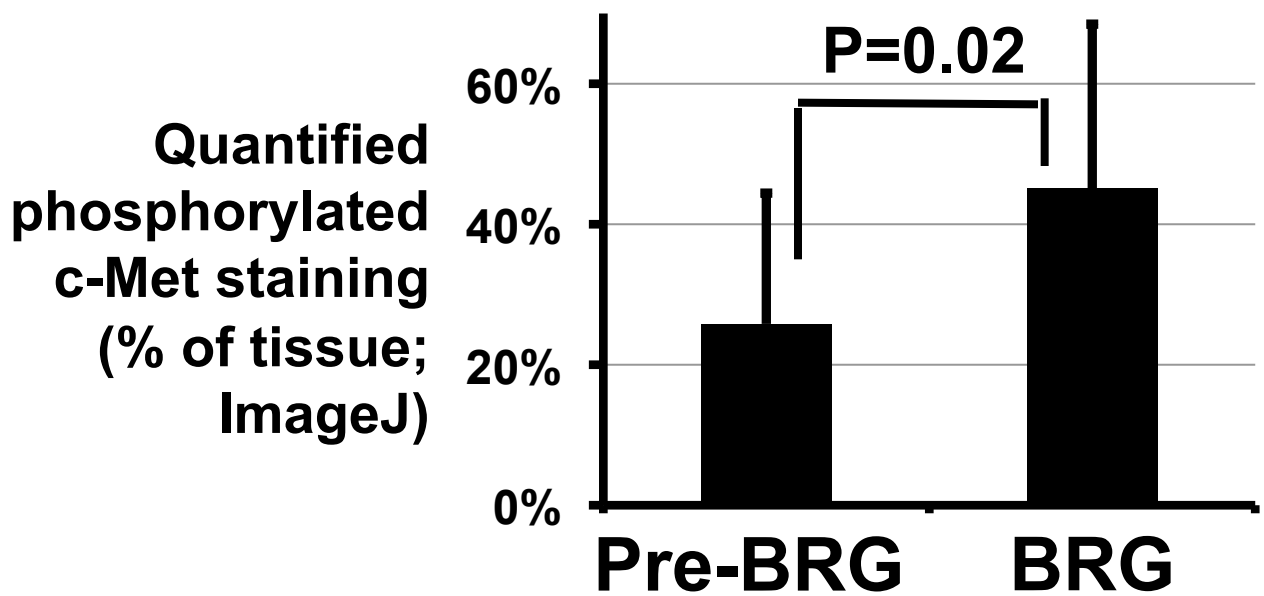


# Supplementary Figure S4

## A

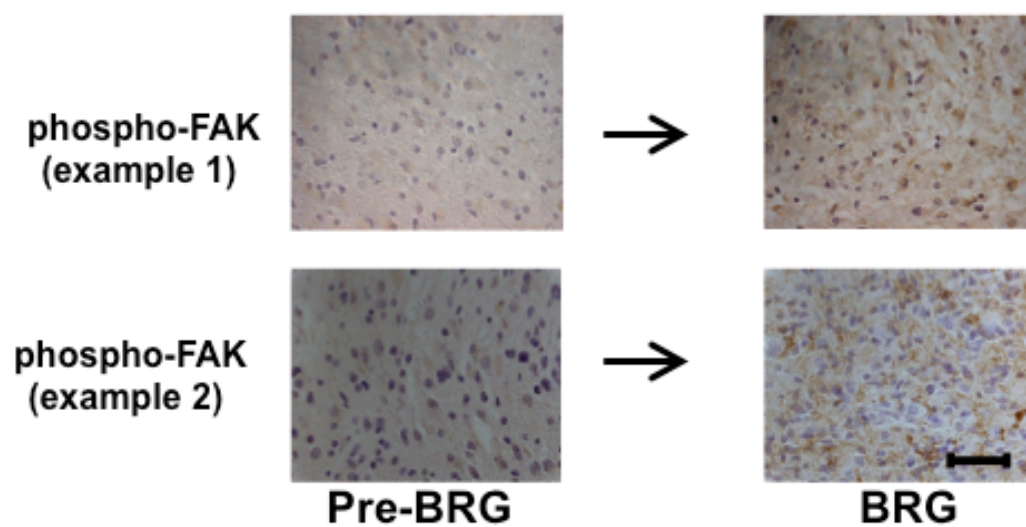


## B

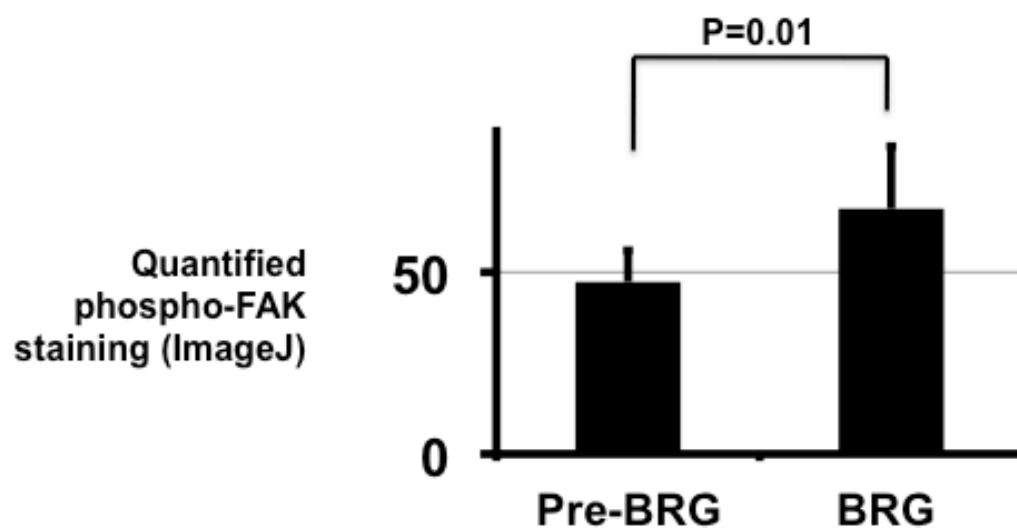


## Supplementary Figure S5

### A

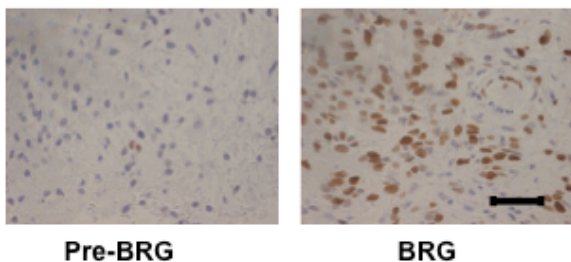


### B

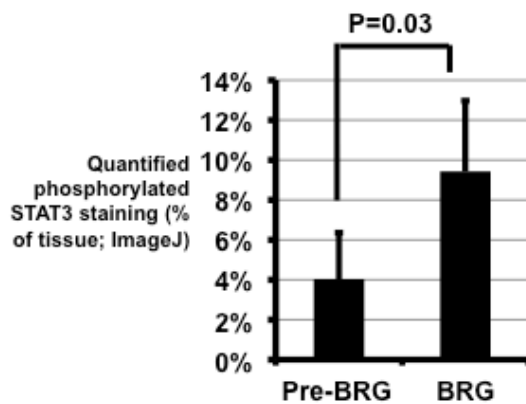


## Supplementary Figure S6

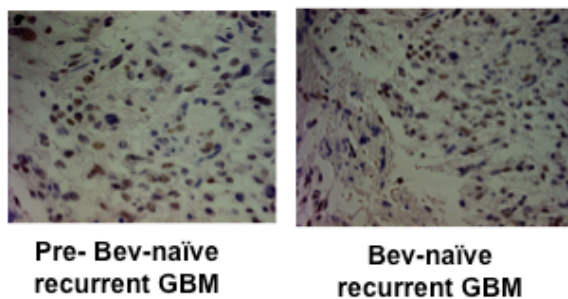
**A**



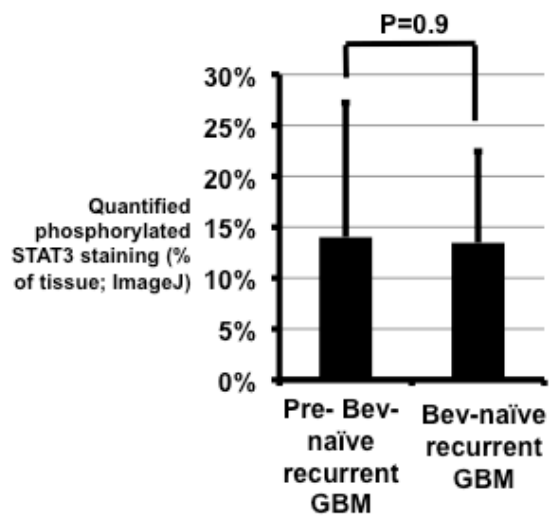
**B**



**C**

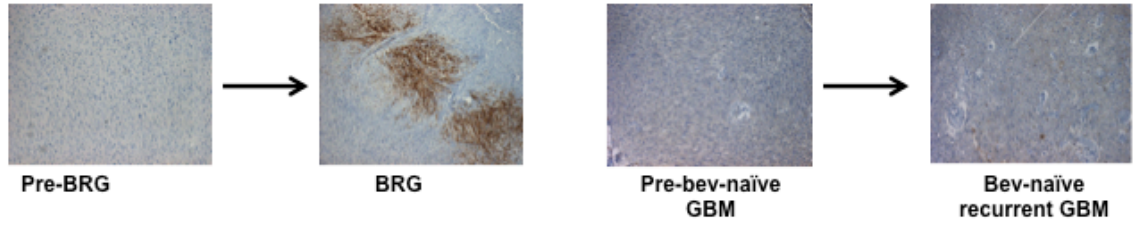


**D**

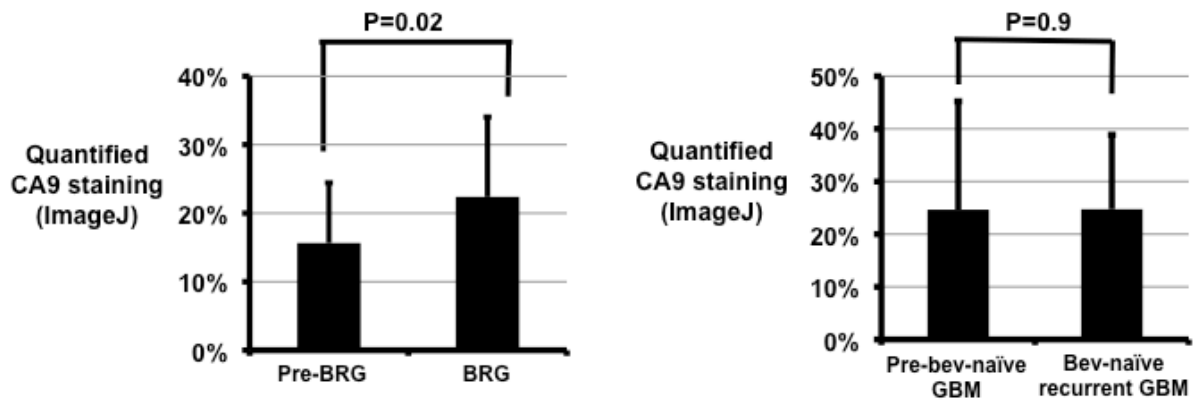


# Supplementary Figure S7

## A

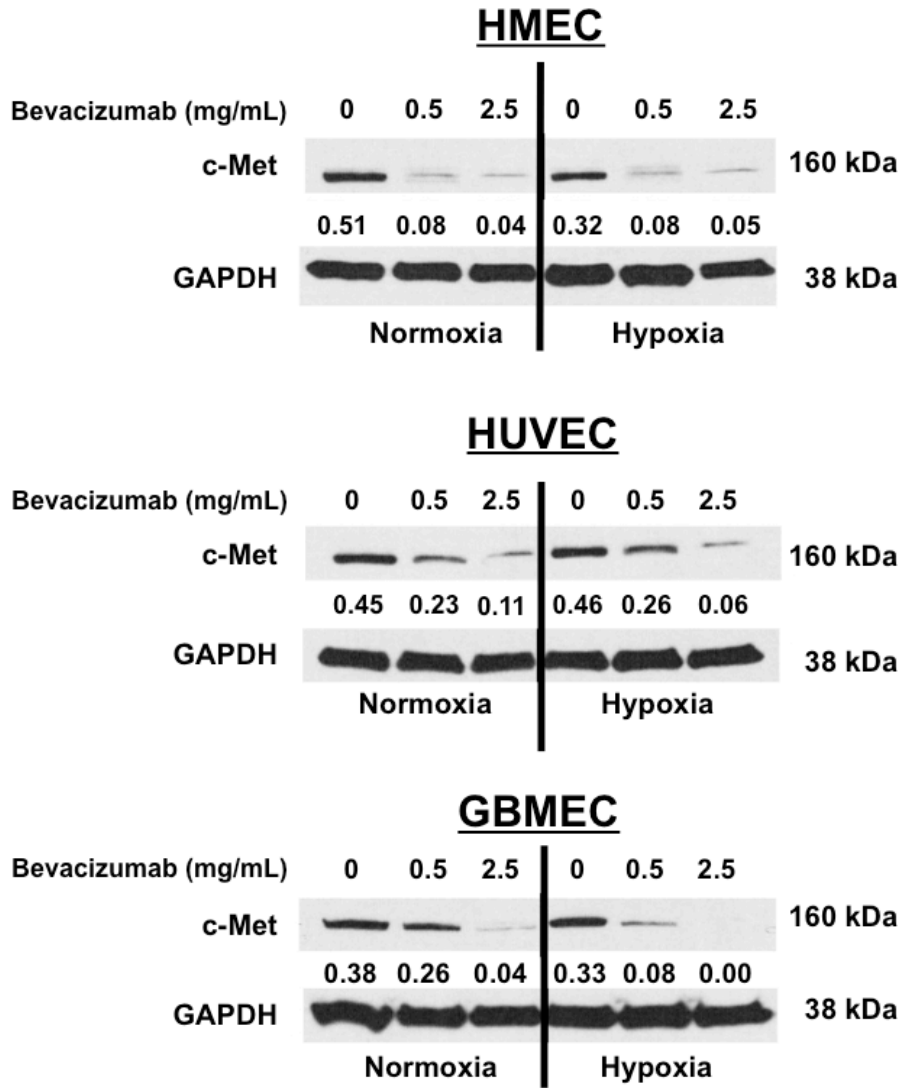


## B

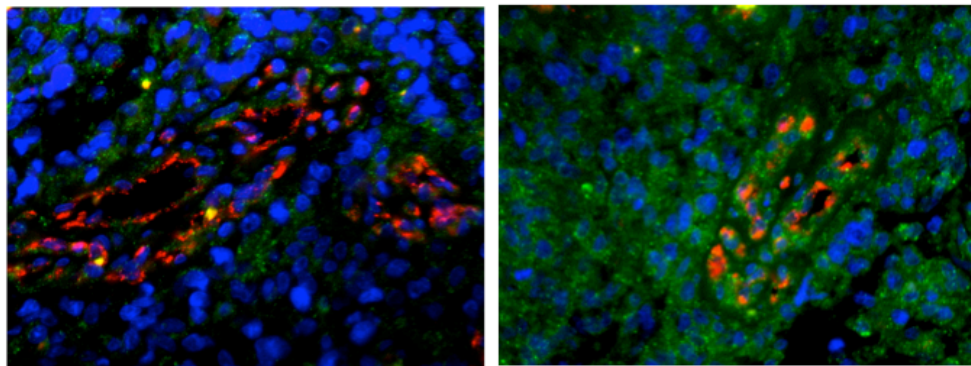


## Supplementary Figure S8

### A



### B

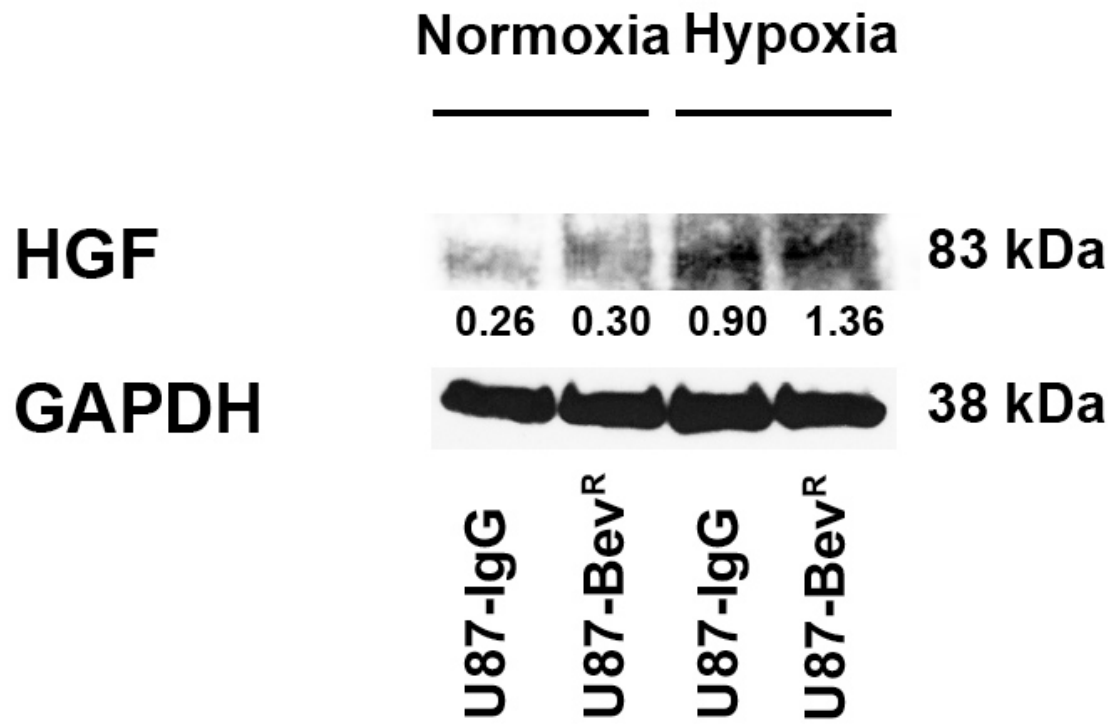


Pre-BRG

BRG



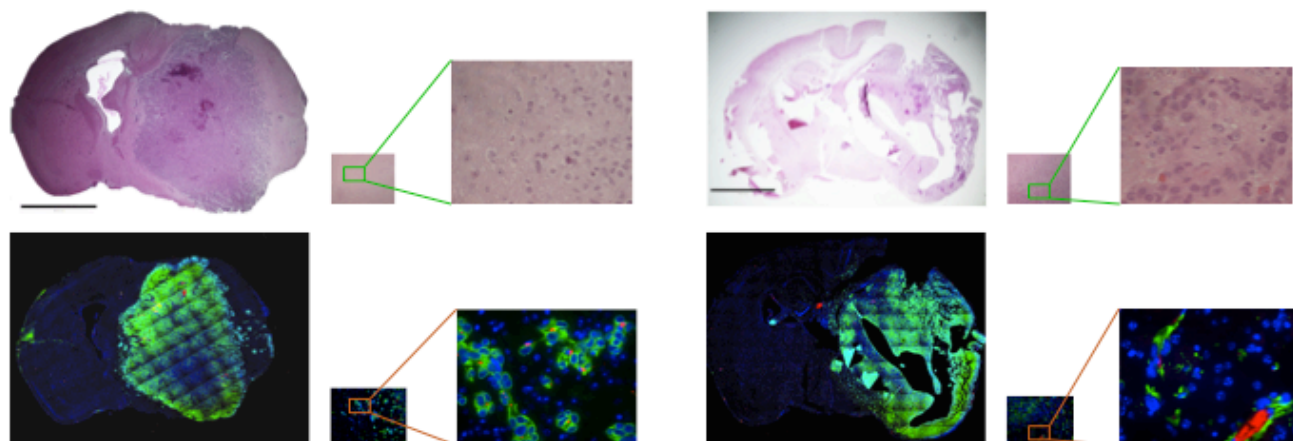
# Supplementary Figure S9



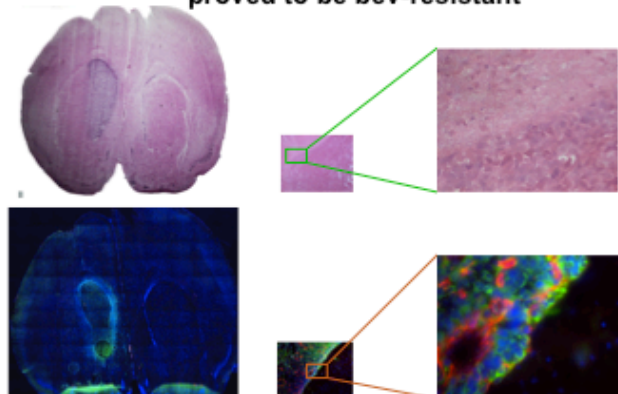
## Supplementary Figure S10

SF7796=BRG-derived

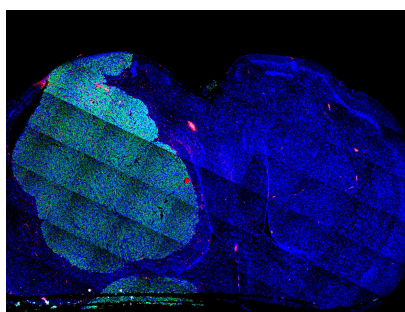
SF8106=BRG-derived



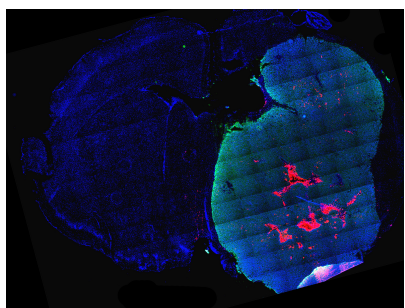
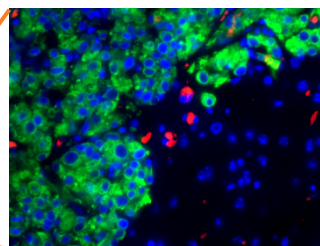
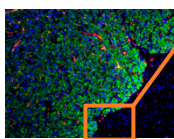
SF8244=acquired from bev-naïve GBM but proved to be bev-resistant



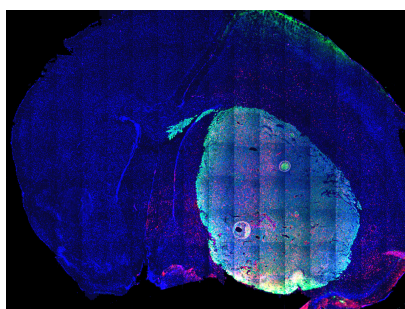
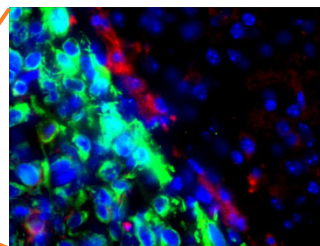
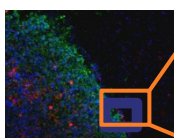
# Supplementary Figure S11



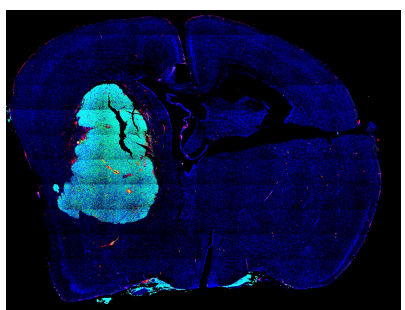
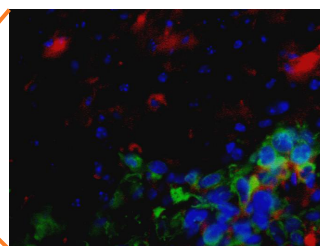
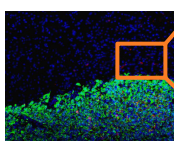
**SF8557**



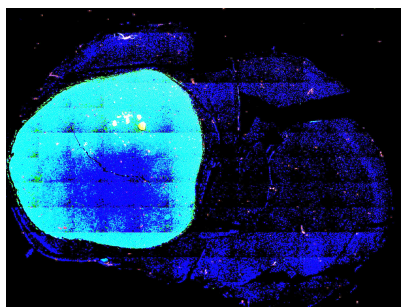
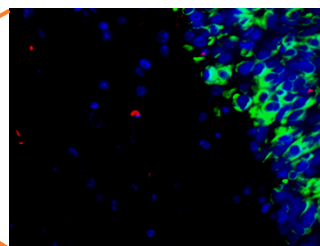
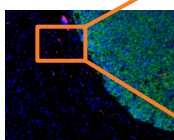
**SF7300**



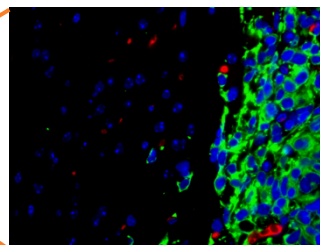
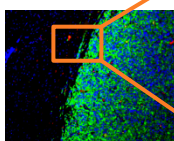
**SF7227**



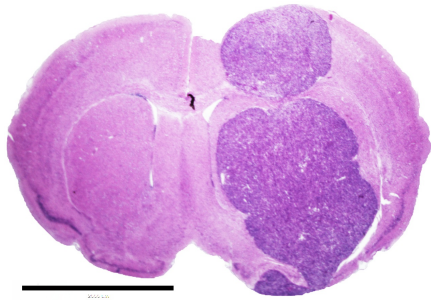
**GBM43**



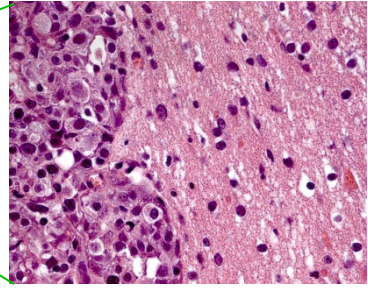
**GBM6**



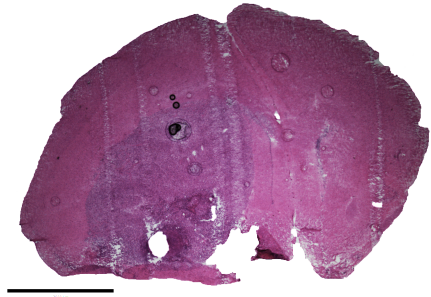
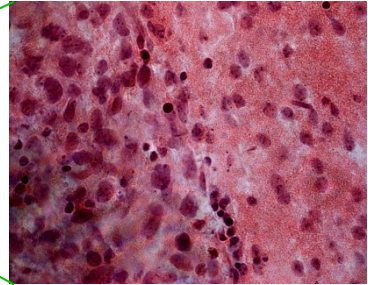
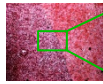
# Supplementary Figure S12



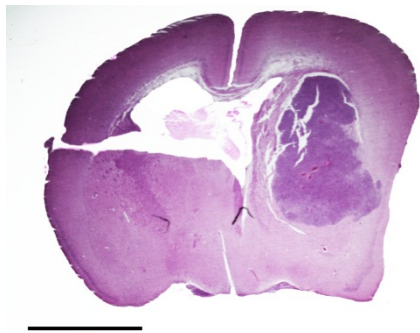
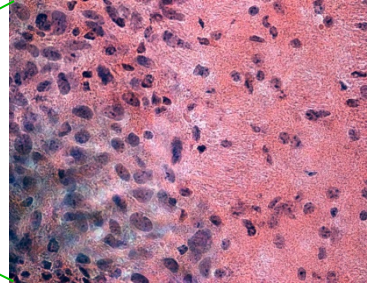
**SF8557**



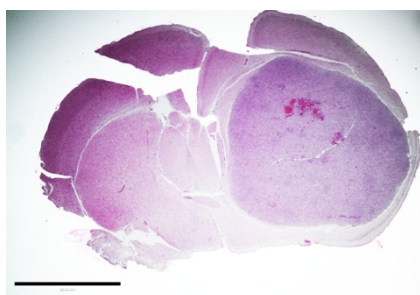
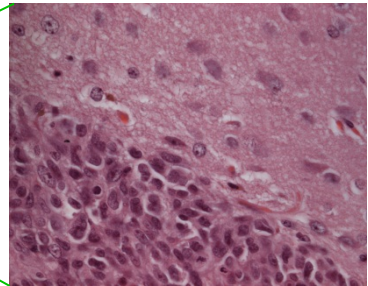
**SF7300**



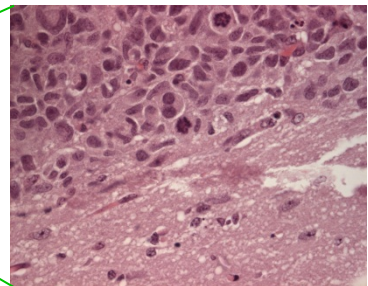
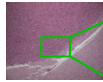
**SF7227**



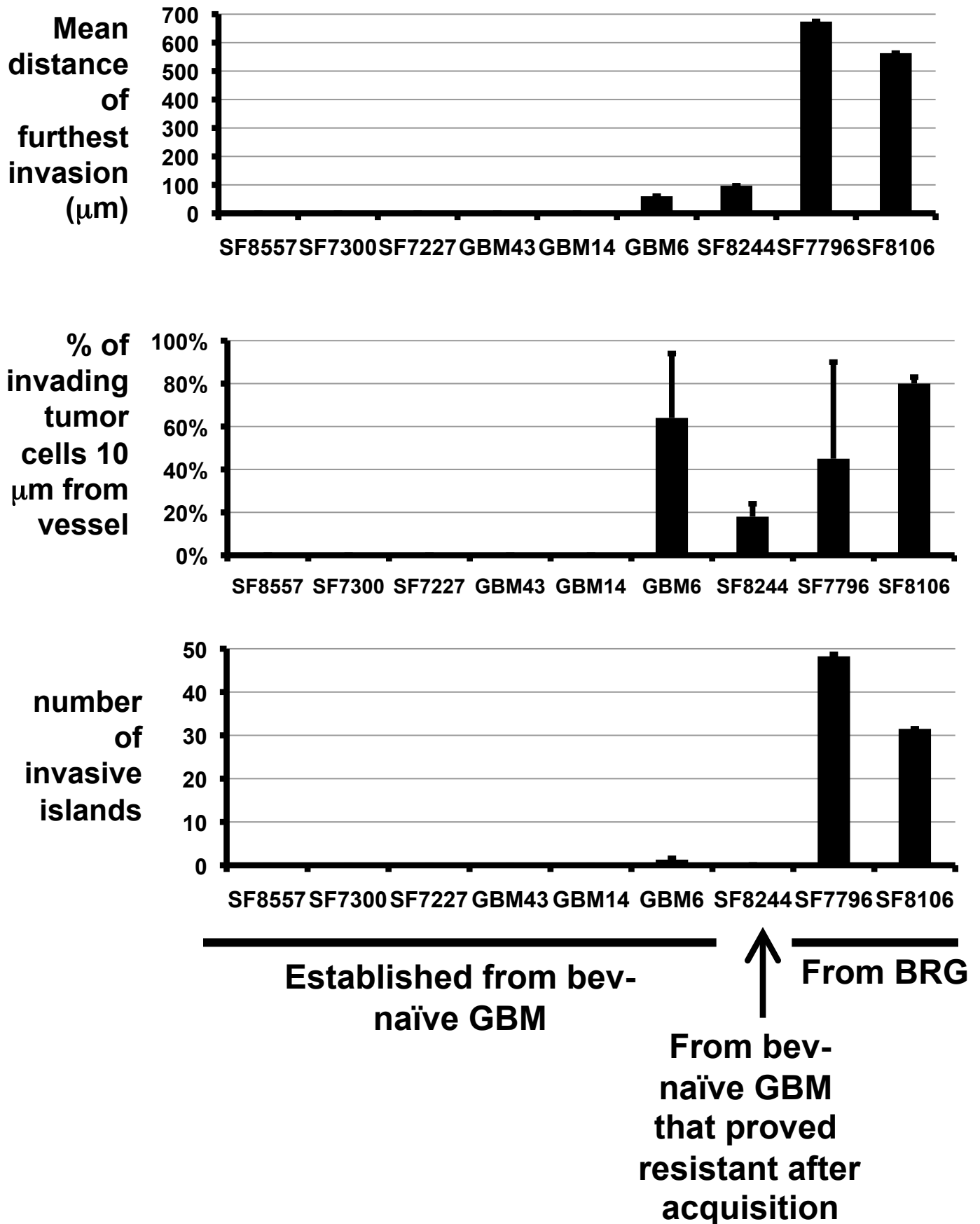
**GBM43**



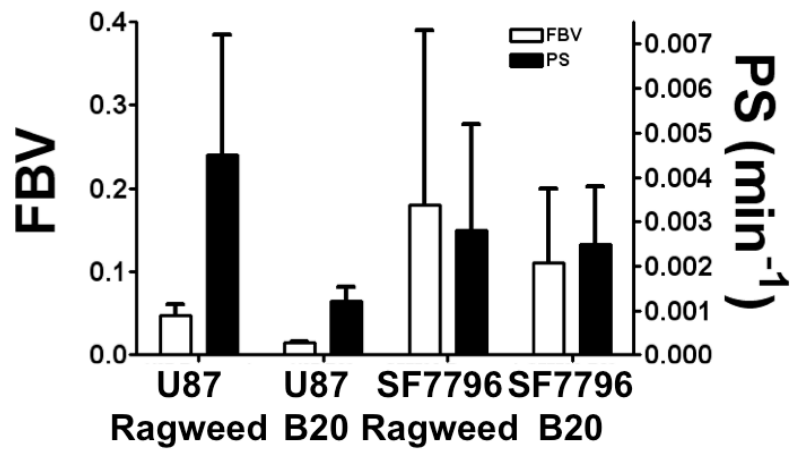
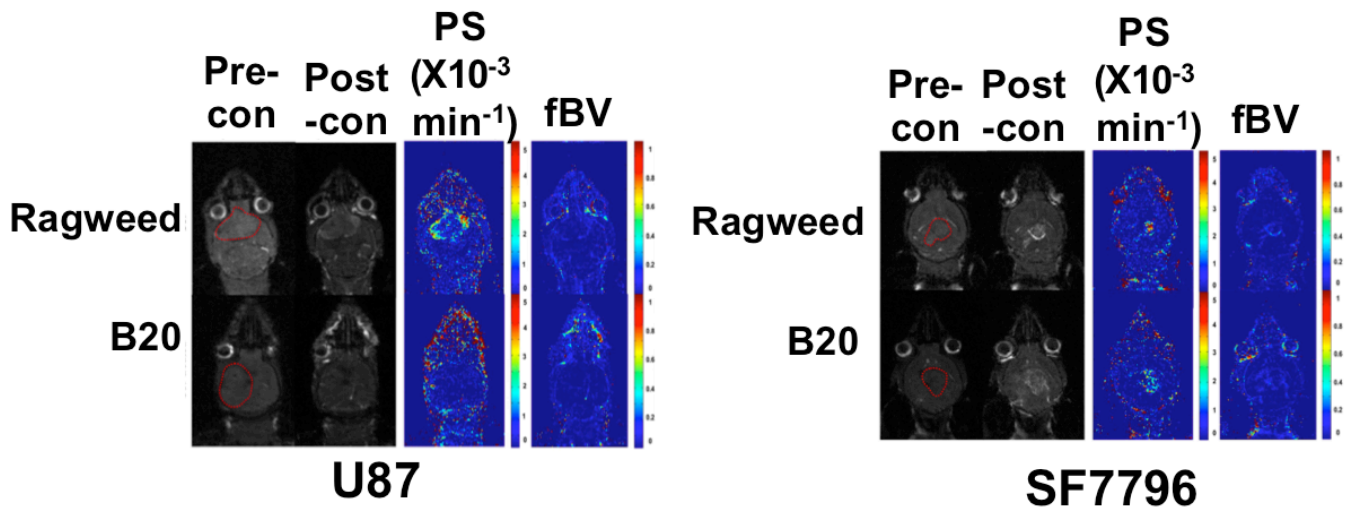
**GBM6**



# Supplementary Figure S13

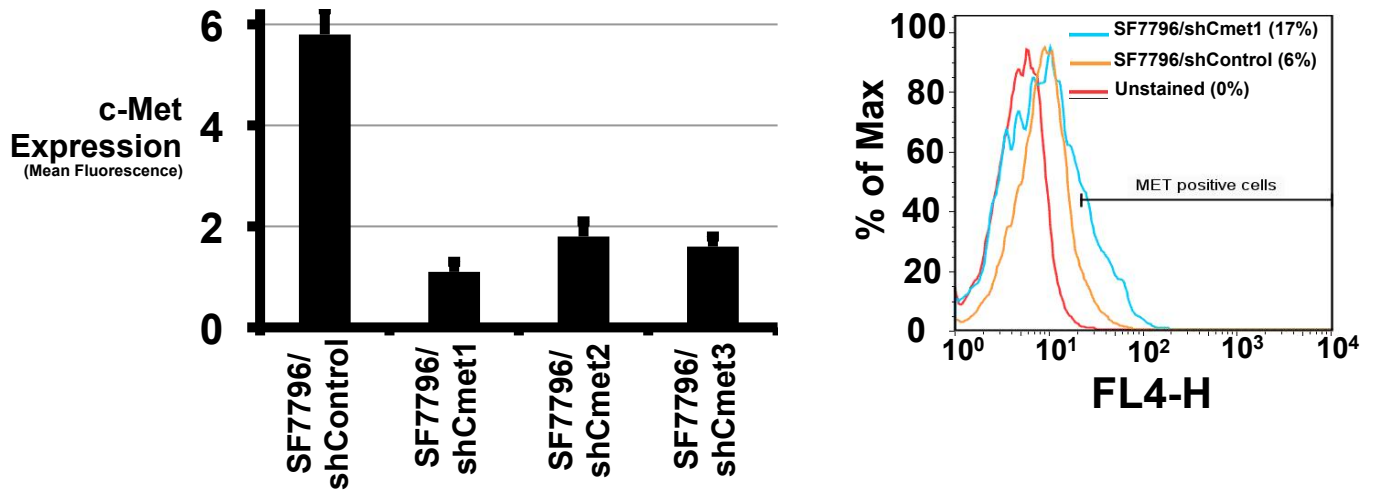


# Supplementary Figure S14

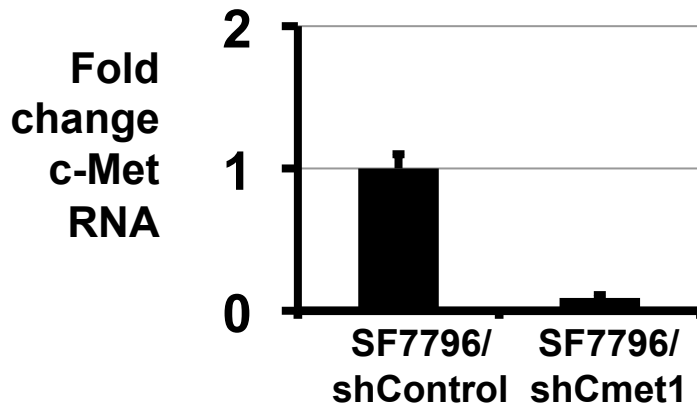


# Supplementary Figure S15

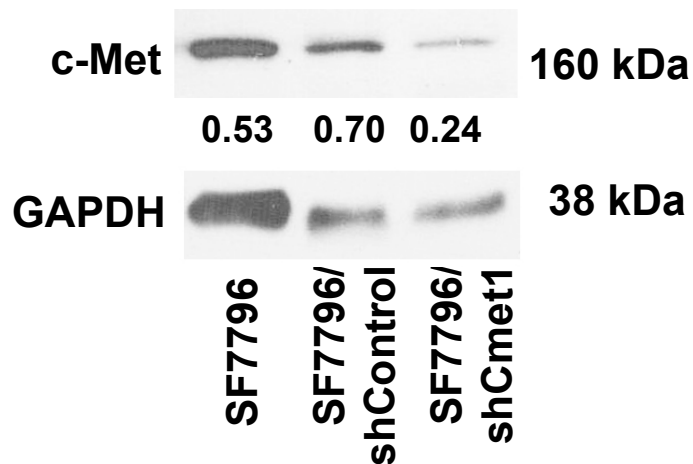
## A



## B

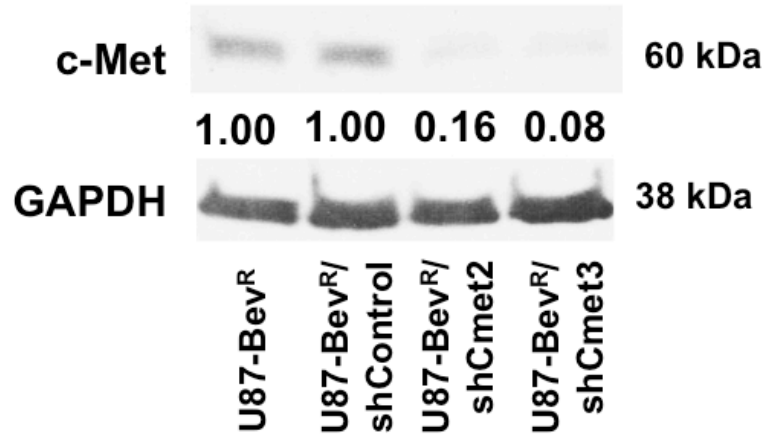


## C

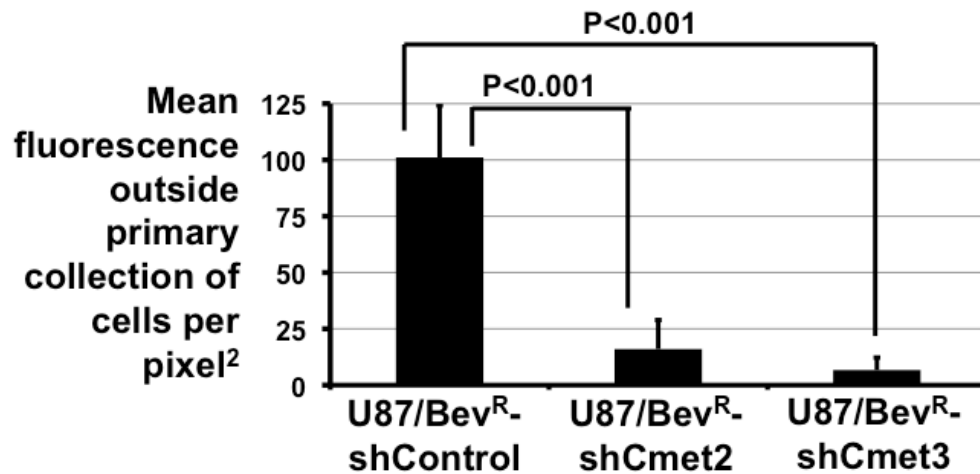
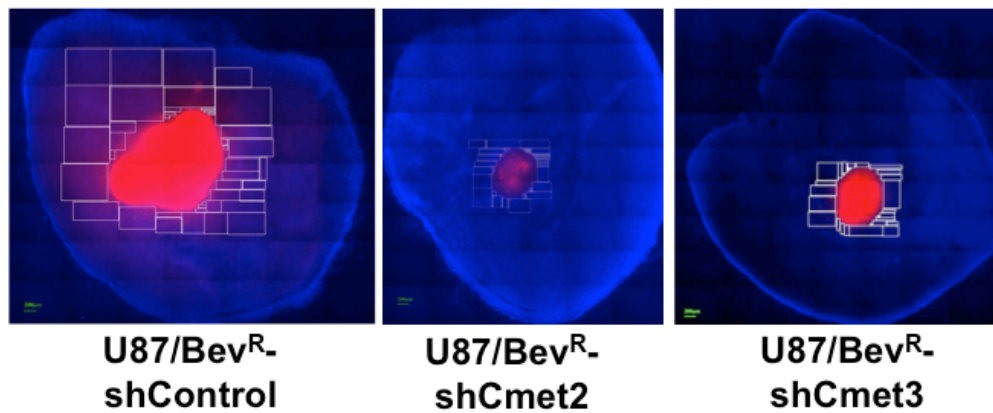


# Supplementary Figure S16

## A

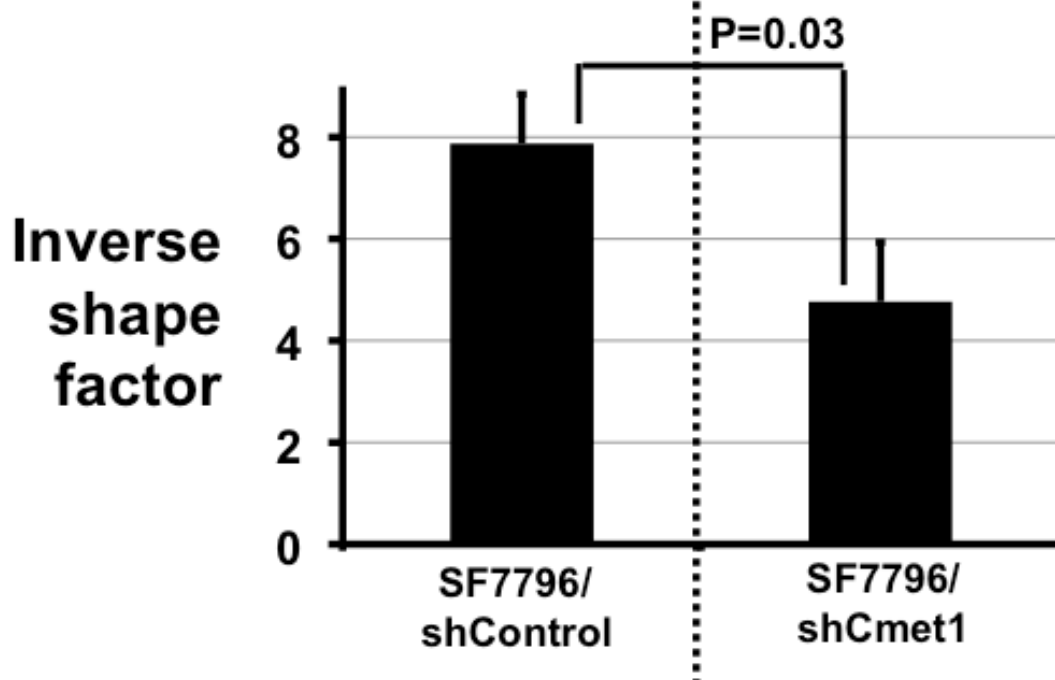
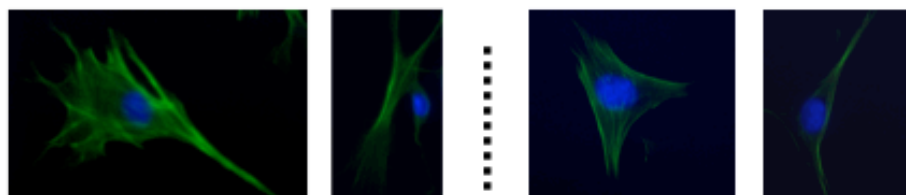


## B

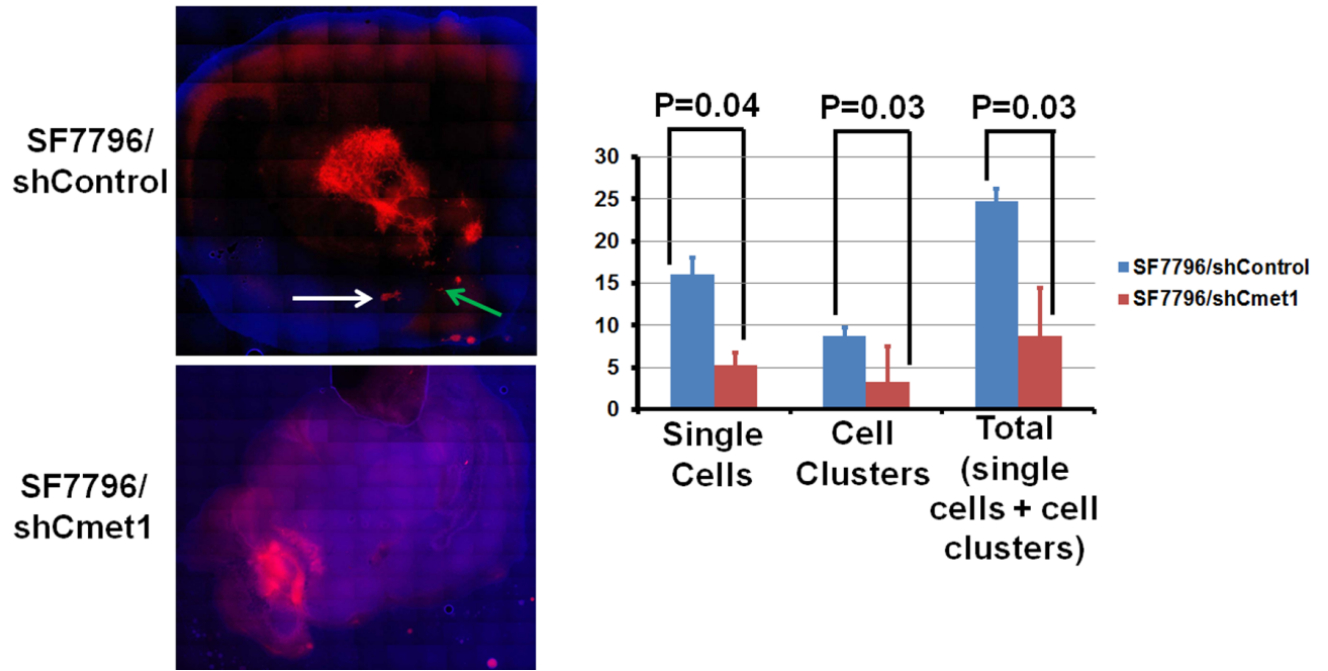




## Supplementary Figure S17

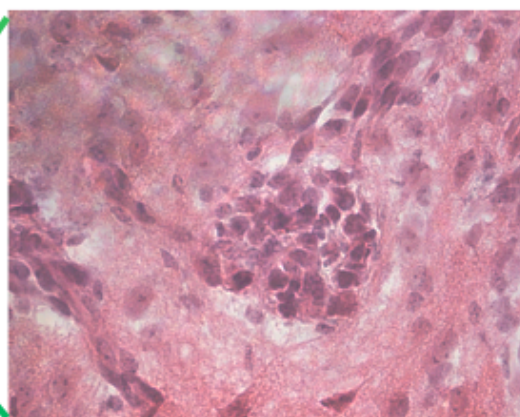
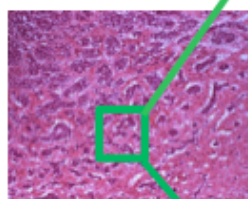
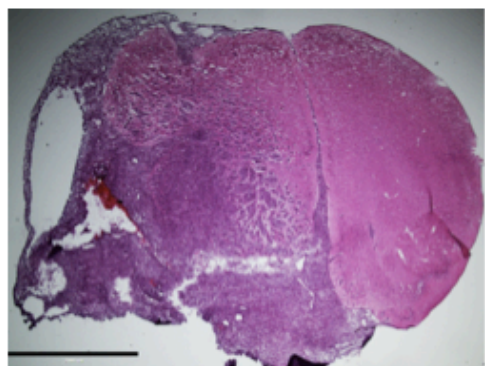


# Supplementary Figure S18

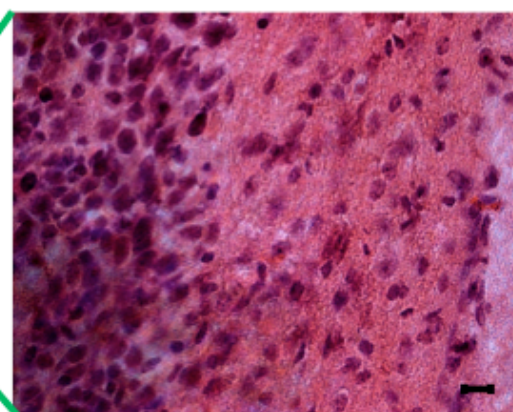
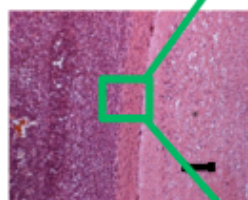
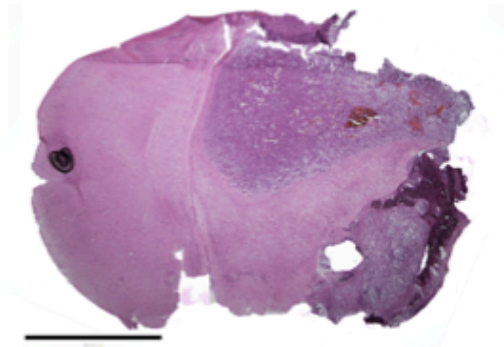


## Supplementary Figure S19

SF7796/shControl



SF7796/shCmet1



## Supplementary Figure S20

