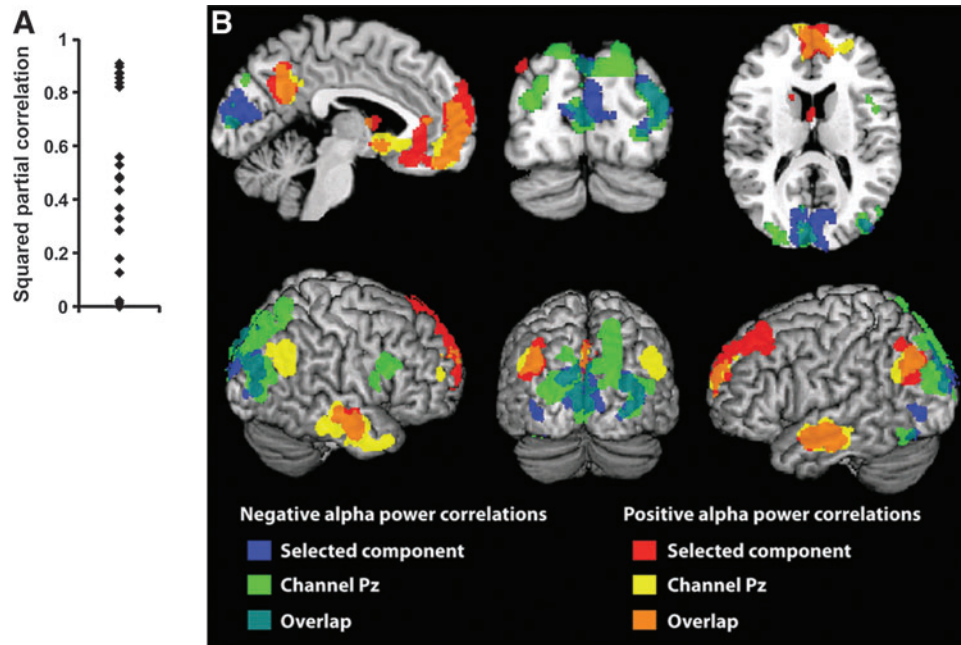


Supplementary Data



SUPPLEMENTARY FIG. S1. Comparison between alpha-BOLD correlation based on either channel-level alpha power fluctuations observed on channel Pz or alpha power fluctuations in the selected posterior independent component. **(A)** The squared partial correlation between these two regressors for each individual subject. The effects of the brain compartment signals and movement parameters are partialled out. **(B)** The regions that correlate with channel (green and yellow) and component (blue and red)-based alpha power fluctuations, and where there is overlap (turquoise and orange) between the two approaches. All regions are significant after a cluster-level correction for multiple comparisons ($p < 0.05$).