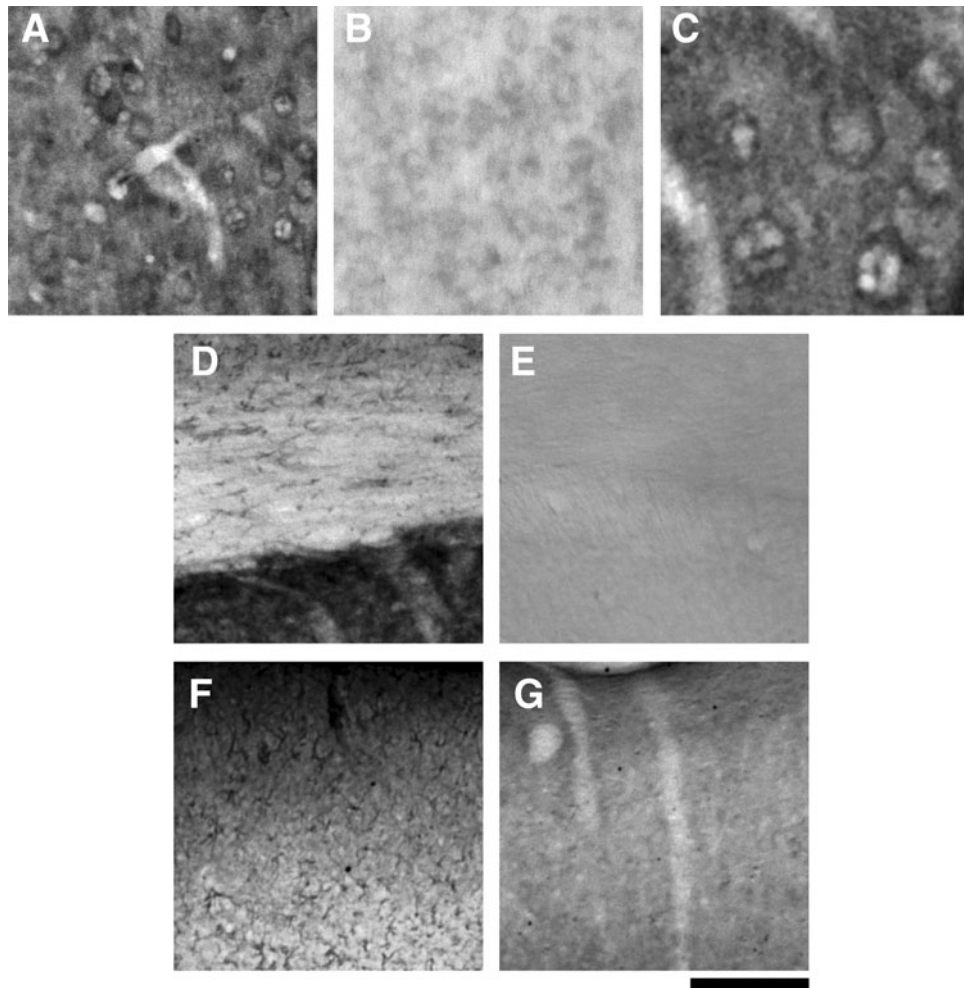


Supplementary Data



SUPPLEMENTARY FIG. S1. Representative photomicrographs of sections checking specificity of the antibodies used. All immunohistochemistry was processed at the same time. The photographs show that all immunostaining is eliminated when the slices are processed without anti- A_{1} , anti- A_{2A} , or anti-GFAP [negative controls: (B, E, G)]. (A–C) A_{1} -immunostaining in S2; (D, E) A_{2A} -immunostaining in border between the Str and neocortex; (F, G) GFAP-immunostaining in Cg2. Scale bar: 75 μm in (A, B); 35 μm in (C); 200 μm in (D–G). GFAP, glial fibrillary acidic protein; Cg2, cingulate cortex; S2, secondary somatosensory cortex; Str, striatum.