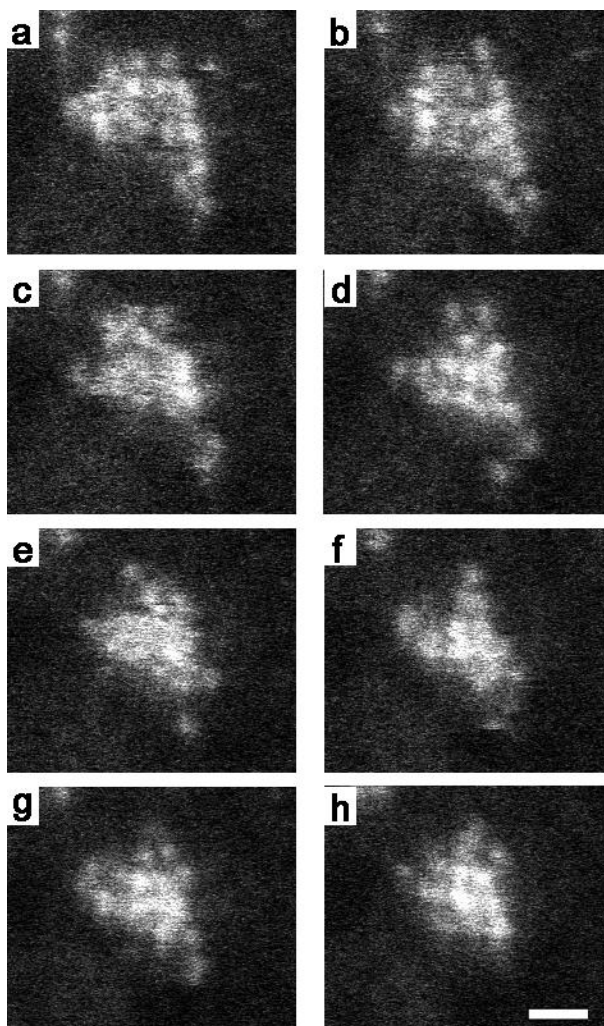


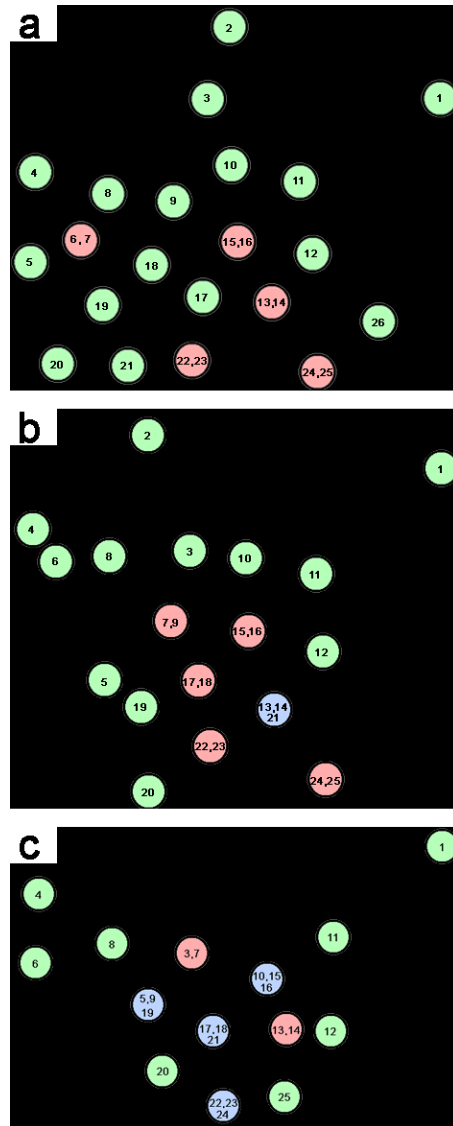
Supplementary Information

Supplementary Figures:



Supplementary Figure S1: Sequence of HAADF-STEM images of a Ge cluster.

Sequence of HAADF-STEM images of a Ge cluster. Each image is acquired with a frame time of 0.1s. It can be seen that a 2D-like configuration transforms into a 3D configuration. The scale bar in h) corresponds to 0.5 nm.



Supplementary Figure S2: Possible pathway of atoms in the cluster during transformation. Pathway of the atoms during the transformation of a 2D configuration to a 3D configuration. Green, red and blue dots correspond to 1, 2, and 3 atoms respectively.