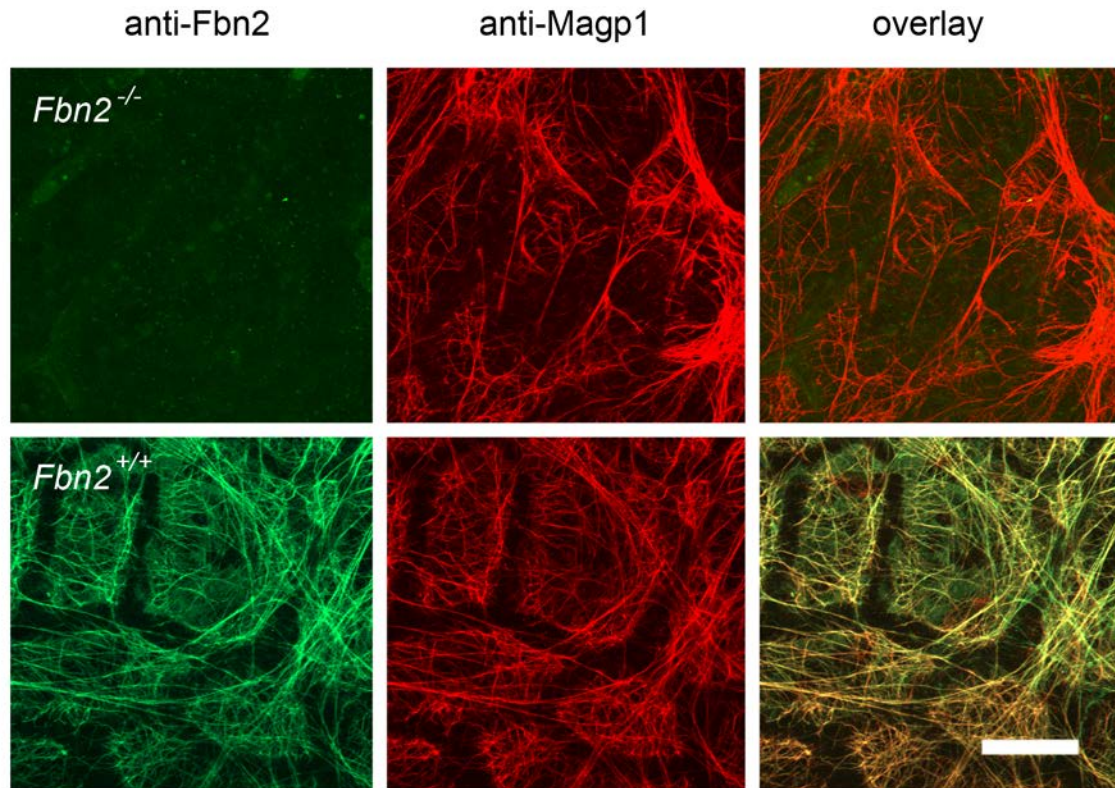


SUPPLEMENTAL DATA FIGURE S1.

Specificity of Magp1 antibody. Globes were obtained from one-month-old wildtype of *Mfap2*-null mice. The *Mfap2* gene encodes Magp1 protein. Samples were incubated with anti-Magp1 (red) and the DNA stain, Draq5 (blue). In wildtype eyes (A), the zonular fibers were stained intensely by anti-Magp1. In contrast, the zonules were not stained by the Magp1 antibody in eyes from *Mfap2*-null mice (B), demonstrating the specificity of the Magp1 antibody. Scale bar = 100  $\mu$ m.



SUPPLEMENTAL DATA FIGURE S2.

Specificity of Fbn2 antibody. Globes were obtained from P1 wildtype or Fbn2-null mice. The pupillary membrane on the anterior surface of the lens was imaged after incubation with anti-Fbn2 (green) or anti-Magp1 (red). In both genotypes the pupillary membrane contained abundant microfibrils. In wildtype mice the microfibrils were stained by both anti-Magp1 and anti-Fbn2. In contrast, in Fbn2-null mice Fbn2 immunofluorescence was reduced to background levels, demonstrating the specificity of the Fbn2 antibody. Scale bar = 20  $\mu$ m.