

1 **Supplementary Figure legends**

2

3 **Supplementary Figure 1. A.** Telomerase activity was measured in MEFs extracts grown in the
4 presence or absence of TA-65 for 24h and 5 days. Two different concentrations of TA-65 were
5 tested. A cellular extract from HCT116 cells was included as a positive control, and RNase was
6 added in all experimental settings as negative control. IC, PCR efficiency control.

7

8 **Supplementary Figure 2. A** Body weight of the indicated mice before or after treatment is given
9 as mean \pm SEM.

10

11 **Supplementary Figure 3. A.** Fold change in mTERT mRNA levels 3 months post treatment in
12 different tissues of 1 year old TA-65 treated mice compared to age-matched controls. mTERT
13 mRNA values were normalized to actin. **B.** Fold change in JunB mRNA levels 3 months post
14 treatment in different tissues of 1 year old TA-65 treated mice compared to age-matched controls.
15 JunB mRNA values were normalized to actin. **C.** Fold change in c-Myc mRNA levels 3 months post
16 treatment in different tissues of 1 year old TA-65 treated mice compared to age-matched controls.
17 c-Myc mRNA values were normalized to actin.

18

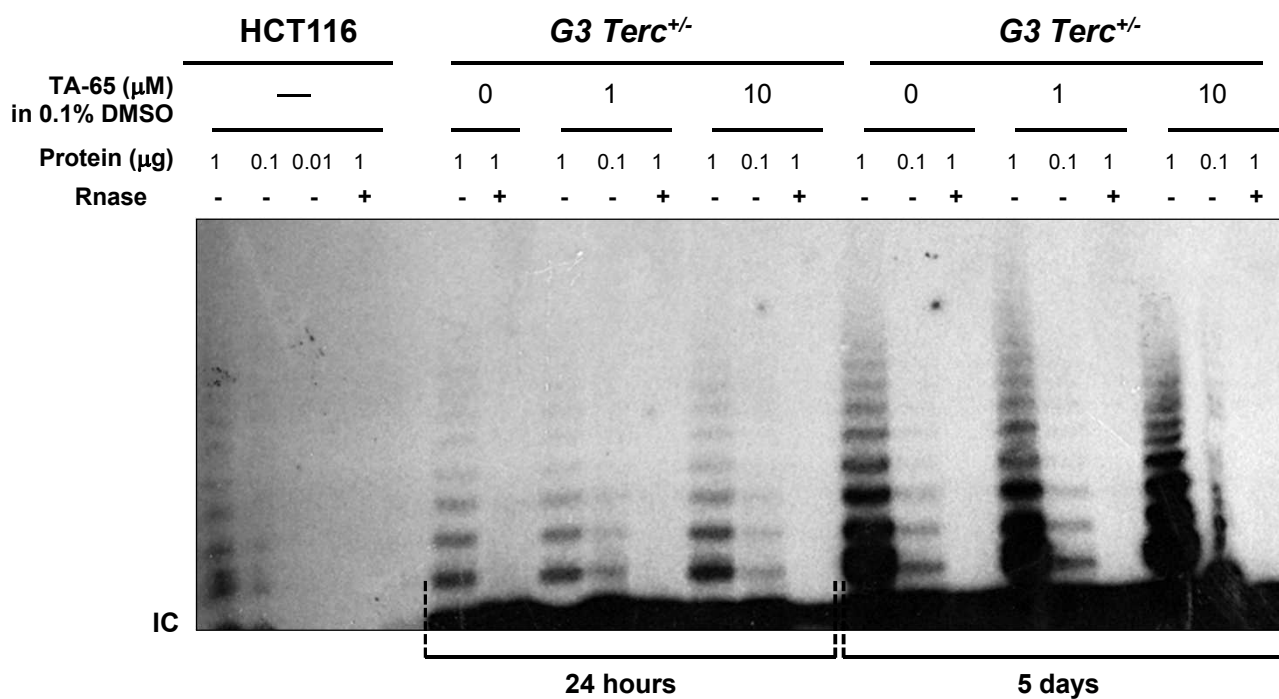
19 **Supplementary Figure 4. A.** Fold changes in CD44, CyclinD1, Klf4, Fibronectin and p16 mRNA
20 levels in liver extracts of TA-65 treated mice compared to age-matched controls. mRNA values
21 were normalized to actin.

22

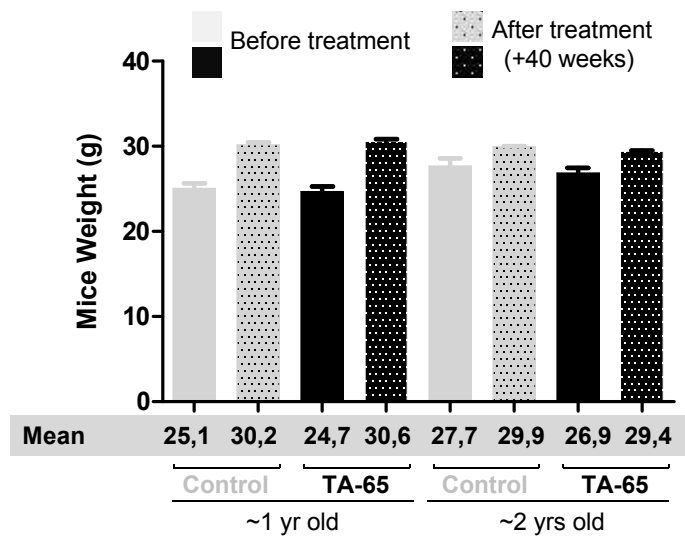
23 **Supplementary Figure 5. A.** Percentage of Ki67-positive cells in the lung from mice non-treated
24 (control) or treated with TA-65. Student's t-test was used for statistical assessments. At least 4
25 HPF (x100) were used per independent mouse (around 24000 lung cells scored per mouse). **B.**
26 Representative Ki67 immunohistochemistry images of lung from the indicated mice cohorts. **C.**
27 Percentage of TUNEL-positive (Apoptag detection kit) cells in the lung from mice non-treated

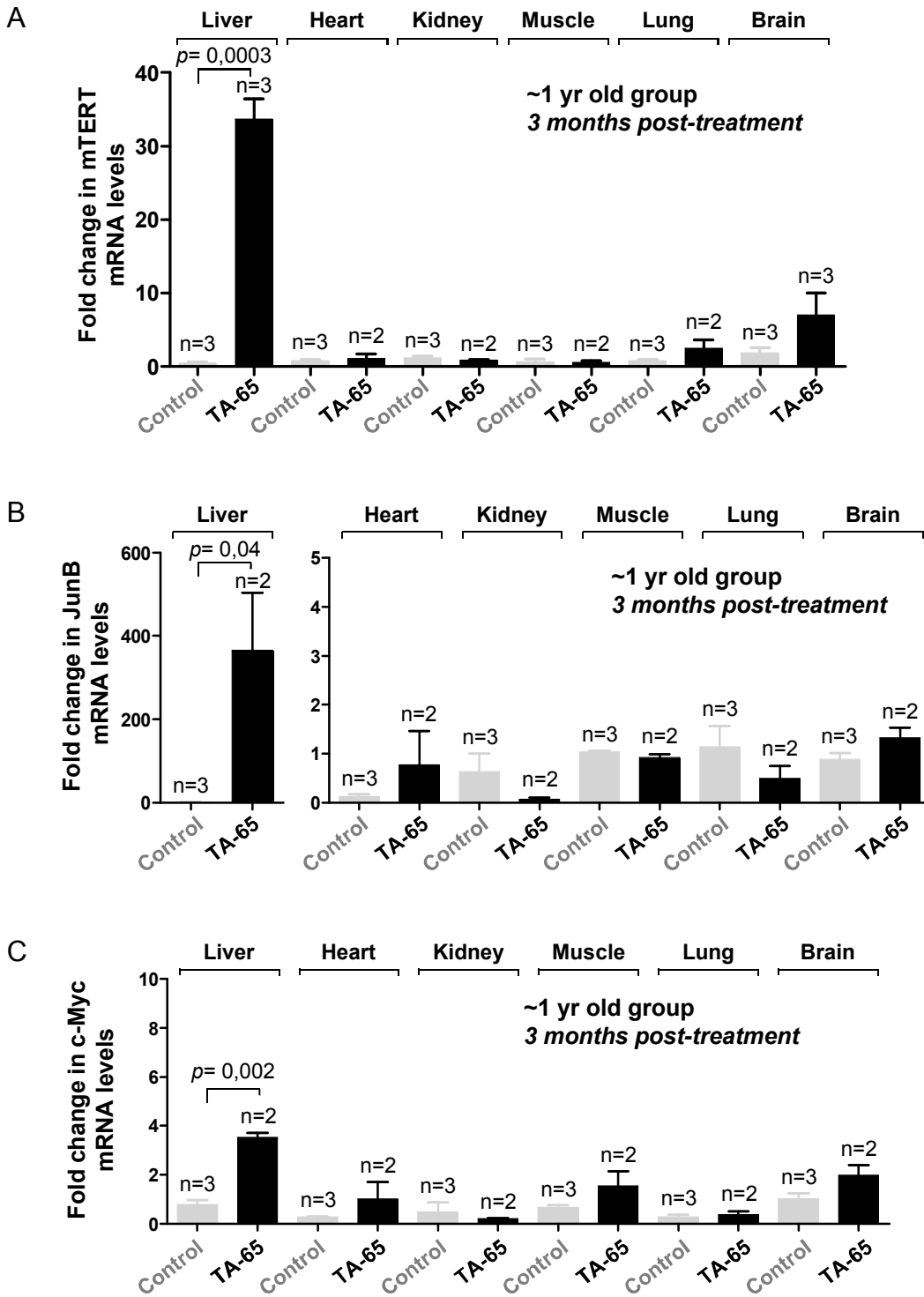
1 (control) or treated with TA-65. Student's t-test was used for statistical assessments. At least 4
2 HPF (x100) were used per independent mouse (around 24000 cells scored per mouse). **D.**
3 Representative TUNEL stained images of lung from the indicated mice cohorts. **E.** Percentage of
4 Ki67-positive cells in the liver from mice non-treated (control) or treated with TA-65. Student's t-test
5 was used for statistical assessments. At least 5 HPF (x100) were used per independent mouse
6 (around 3000 hepatocytes scored per mouse). **F.** Representative Ki67 immunohistochemistry
7 images of liver from the indicated mice cohorts. **G.** Percentage of TUNEL-positive (Apoptag
8 detection kit) cells in the liver from mice non-treated (control) or treated with TA-65. Student's t-test
9 was used for statistical assessments. At least 5 HPF (x100) were used per independent mouse
10 (around 3000 hepatocytes scored per mouse). **H.** Representative TUNEL stained images of liver
11 from the indicated mice cohorts.
12

A



A





A

