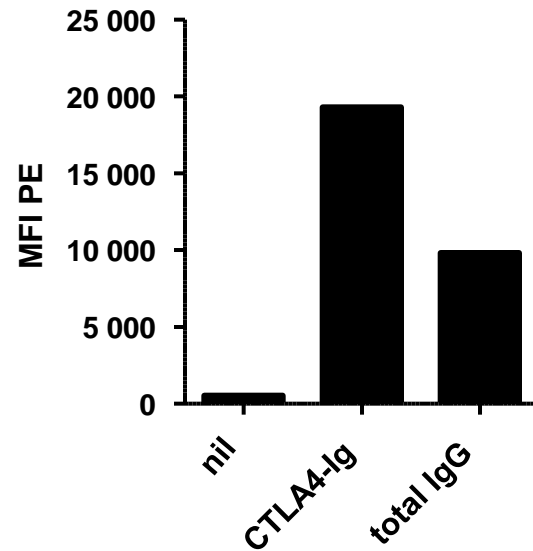


S1



Supplementary Figure 1. PE labelled anti-IgG antibody specifically detects CTLA4-Ig bound to CD80 or CD86 molecules. C57BL/6 BMDCs were incubated without CTLA4-Ig, with CTLA4-Ig or with total human immunoglobulin (Beriglobin) at 37°C and stained with PE labelled anti-IgG antibody. MFI, mean fluorescence intensity. PE, phycoerythrin.

S2

MLR	Trp (μMol)	Kyn (μMol)
no CTLA4-Ig	92.0	0.29
with CTLA4-Ig	86.9	0.26

Supplementary Table 1. Tryptophan (Trp) and kynurenine (Kyn) concentrations measured by HPLC in cell culture supernatants after 3 days of MLR performed in the presence or absence of CTLA-4Ig (100 $\mu\text{g/ml}$).