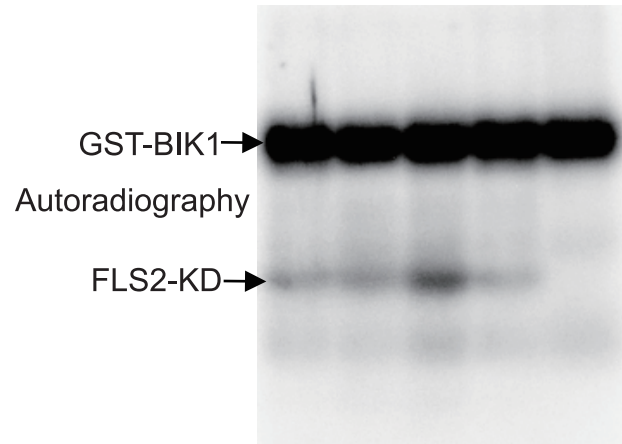


FLS2-D997A-KD	-	-	-	+	-
FLS2-S938D-KD	-	-	+	-	-
FLS2-S938A-KD	-	+	-	-	-
FLS2-KD	+	-	-	-	-
GST-BIK1	+	+	+	+	+



Supplemental Figure 9. Second example (see also Figure 4) of transphosphorylation of FLS2 kinase domain by BIK1. Kinase domains of FLS2 (wild-type or mutant as specified), and full-length wild-type BIK1 were purified from *E. coli* as GST fusion proteins; GST was cleaved from FLS2 proteins during purification. In vitro kinase assays carried out in the presence of [$\gamma^{32}\text{P}$]-ATP. Autoradiograph after SDS-PAGE.