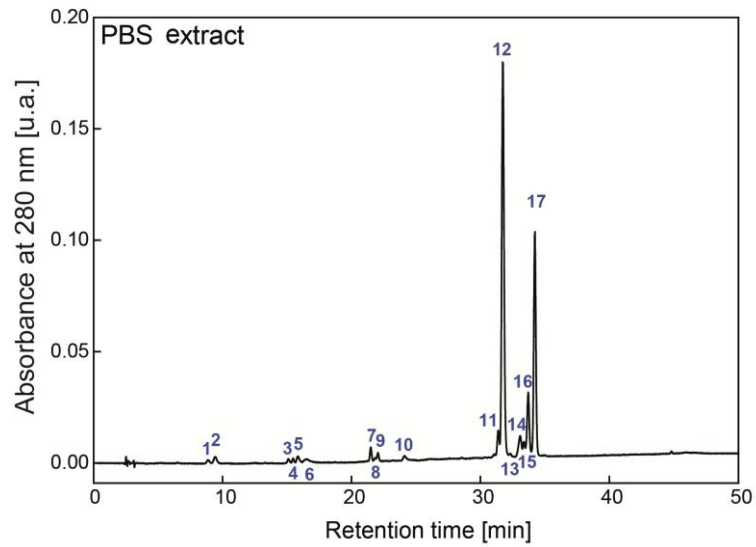
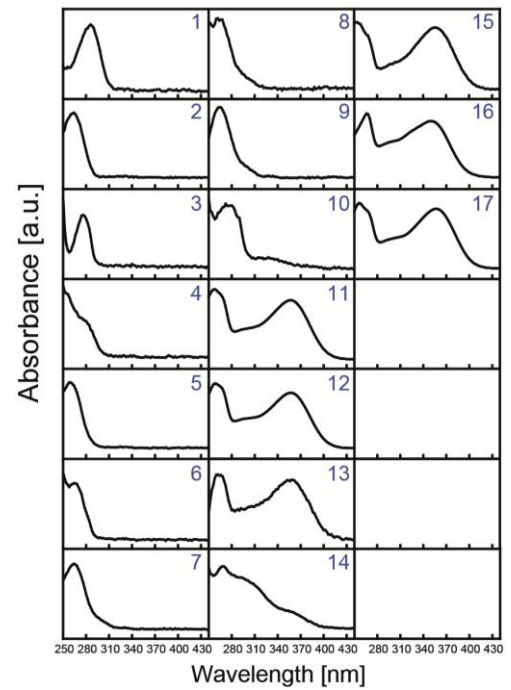
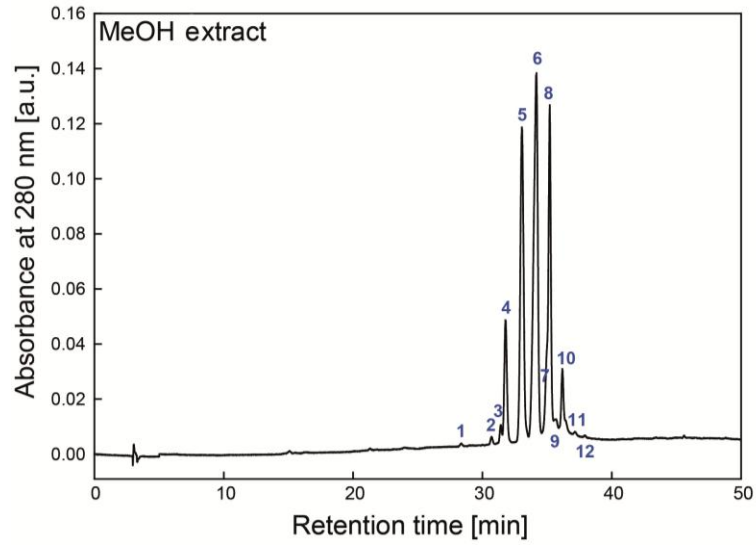


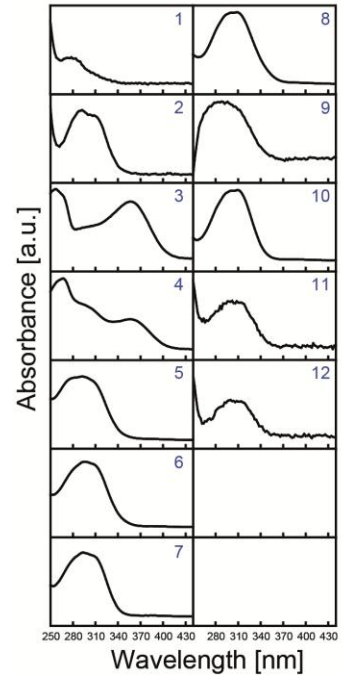
a)**b)****c)**

#	Time	Maxima	Preliminary assignment
1	8.8	285	
2	9.3	263	
3	14.8	274	
4	15.1	255-277	
5	15.4	258	
6	16.2	264	
7	21.4	263	
8	21.7	260-266	
9	22.0	263	
10	24.0	272-278-289	
11	31.4	256-356	Quercetin 3-O-glycoside
12	31.7	257-356	Quercetin 3-O-glycoside
13	32.3	261-264-356	Quercetin 3-O-glycoside
14	33.2	267	
15	33.4	252-266-354	Quercetin 3-O-glycoside
16	33.8	265-348	Kaempferol 3-O-glycoside
17	34.3	256-356	Quercetin 3-O-glycoside

d)



e)



f)

#	Time	Maxima	Preliminary assignment
1	28.4	276	
2	30.7	290-306	
3	31.4	255-355	= PBS 11
4	31.8	265-300-355	= PBS 12 + ?
5	33.1	290	
6	34.2	295	
7	35.0	292	
8	35.2	308	
9	35.6	290	
10	36.2	308	
11	37.1	308	
12	37.9	300-312	

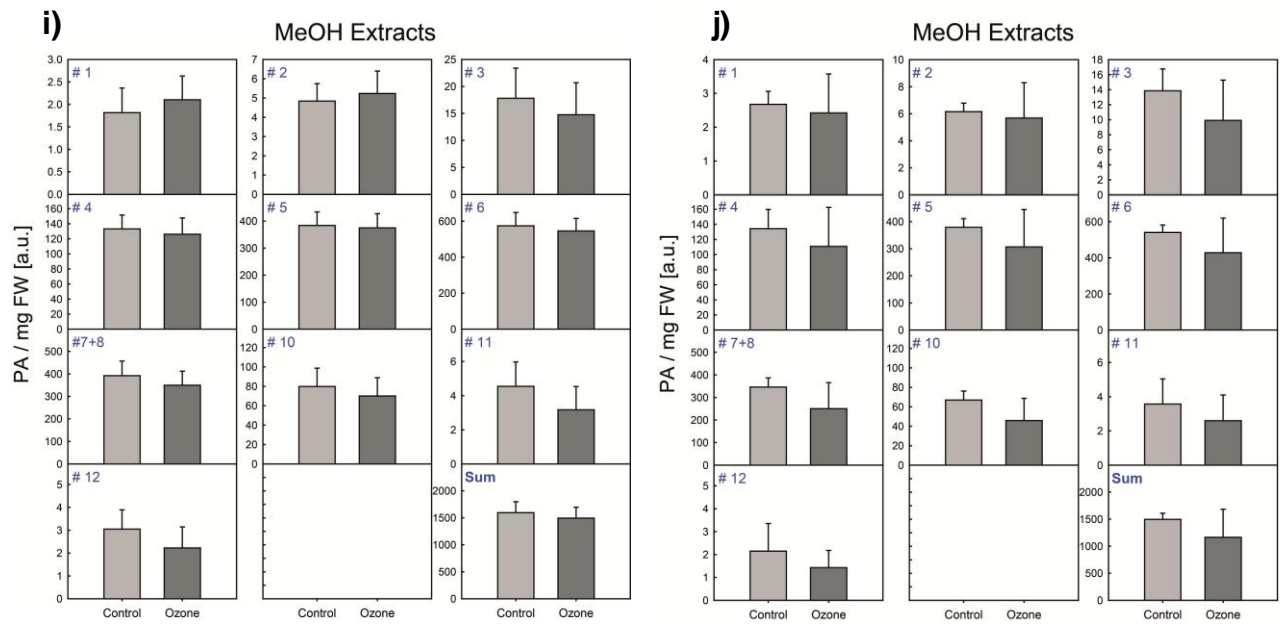
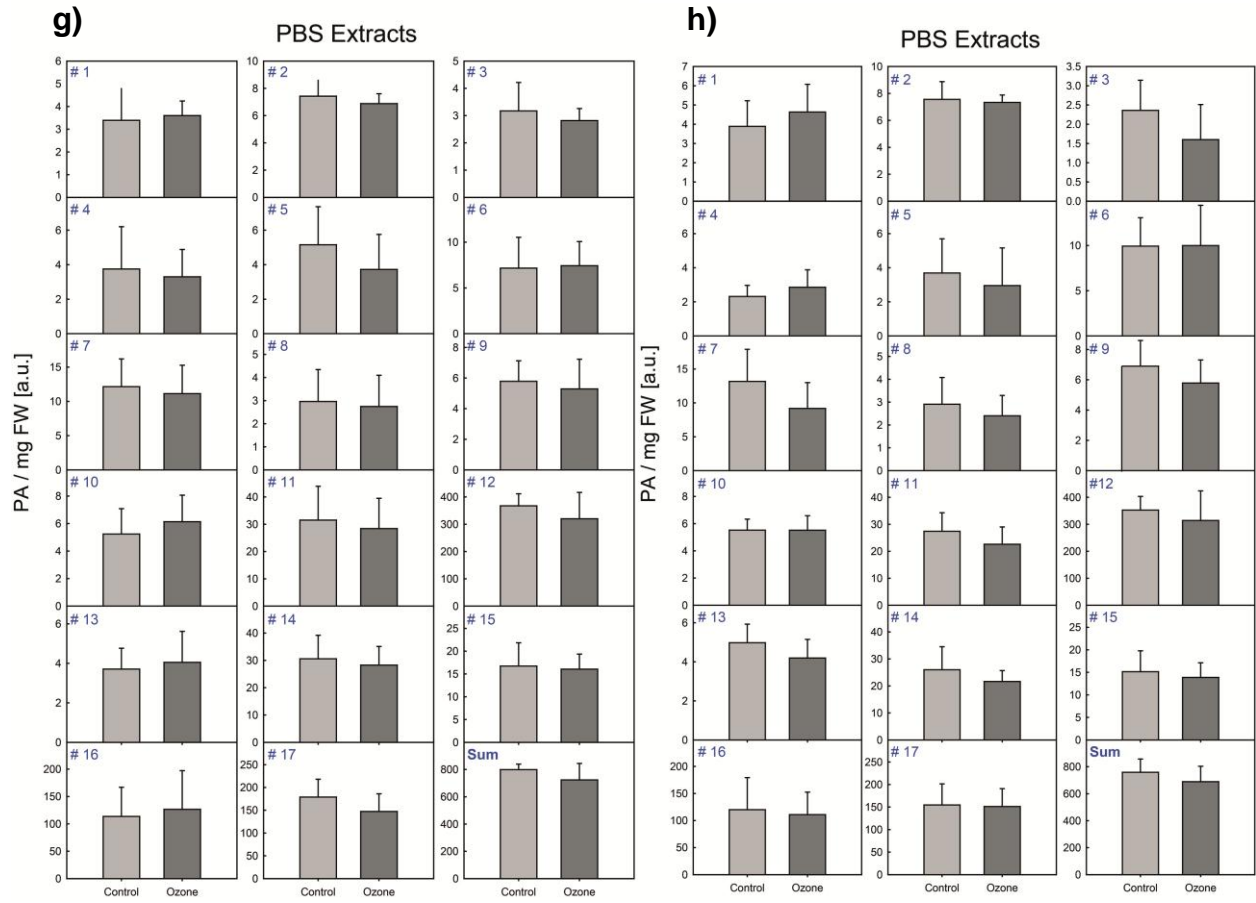


Figure S4. (a) shows a typical HPLC run of a PBS extract from *Ambrosia* pollen at an absorbance of 280 nm, resulting in 17 distinct peaks. (b) represents the diode array spectra of the respective peaks between 250 and 430 nm. (c) indicates the elution times and the maxima of the corresponding peaks. For the peaks #11-13 and #15-17 preliminary structural assignments are given. (d) gives a typical HPLC run of a methanol extract, following the PBS extraction, from *Ambrosia* pollen at an absorbance of 280 nm. The HPLC run results in 12 distinct peaks. Diode array spectra of the respective peaks between 250 and 430 nm are given in (e). (f) indicates the corresponding retention time and the peak maxima for each single peak stated in figure part (d). Peak # 3 corresponds to the peak 11 from the PBS extraction. Peak # 4 contains in part the compounds related to peak 12 of the PBS extract besides an unknown compound.

On the basis of peak area obtained at 280 nm, the PBS and methanol extractable metabolites from *Ambrosia artemisiifolia* pollen are given. (g) represents the PBS soluble fraction from pollen sampled on August 23, and (h) the respective ones sampled on August 30. (i) and (j) represent the peak areas of methanol extracted metabolites after PBS extraction sampled on August 23 and August 30, respectively. PBS = phosphate buffer saline; PA = peak area; FW = fresh weight.