

A

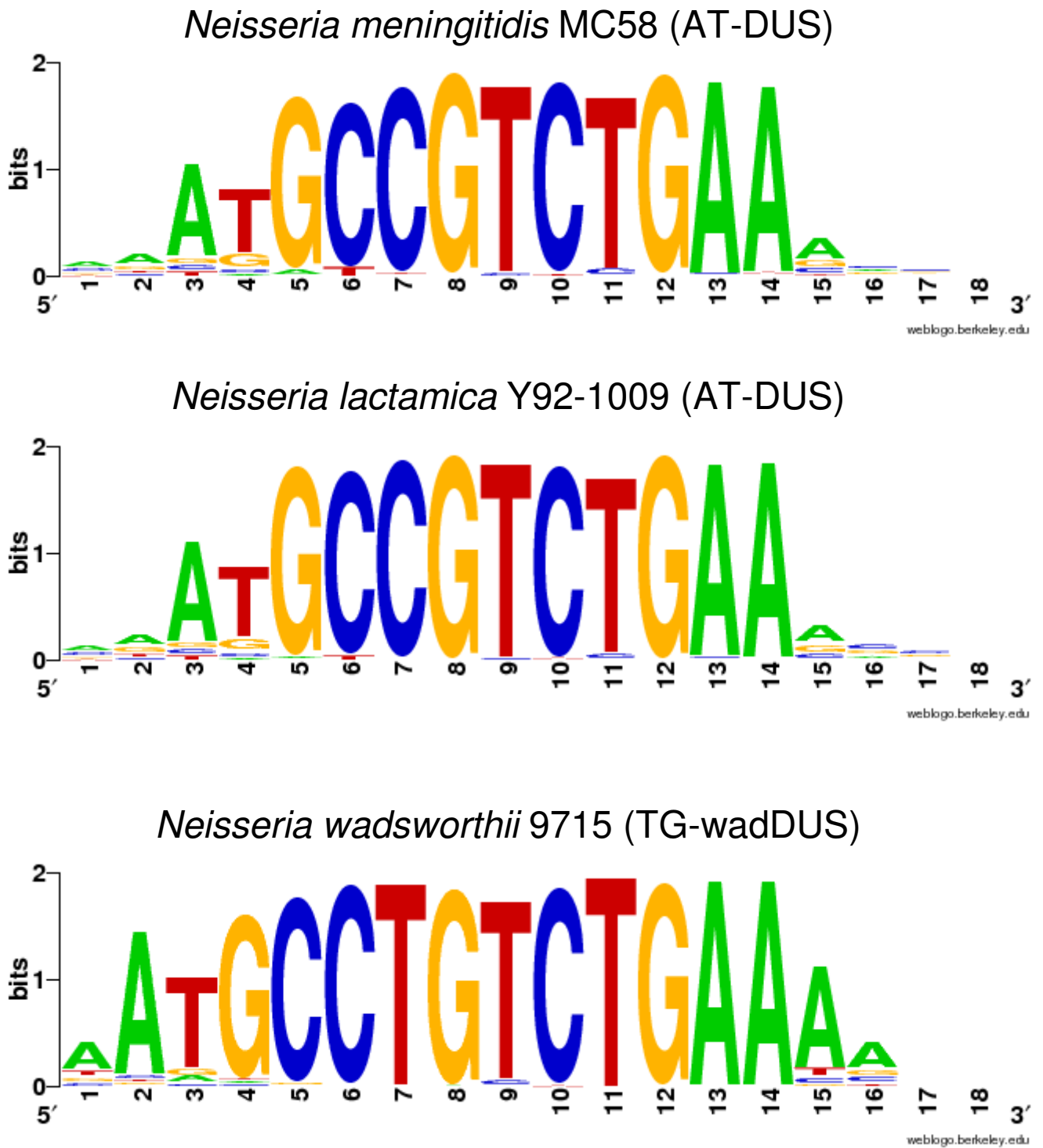


Figure S1: Sequence logos, single divergence permitted

B

*Neisseria bacilliformis* ATCC BAA-1200 (AG-DUS)



*Neisseria flavescens* SK114 (AG-DUS)



*Neisseria mucosa* C102 (AG-DUS)



Figure S1: Sequence logos, single divergence permitted

C

*Neisseria elongata* subsp. *glycolytica* ATCC 29315 (AG-DUS)



*Neisseria* sp. oral taxon 014 str.F0314 (AG-DUS)



*Neisseria mucosa* ATCC 25996 (AG-mucDUS)



Figure S1: Sequence logos, single divergence permitted

D

*Eikenella corrodens* ATCC 23834 (AG-eikDUS)



*Kingella oralis* ATCC 51147 (AG-kingDUS)

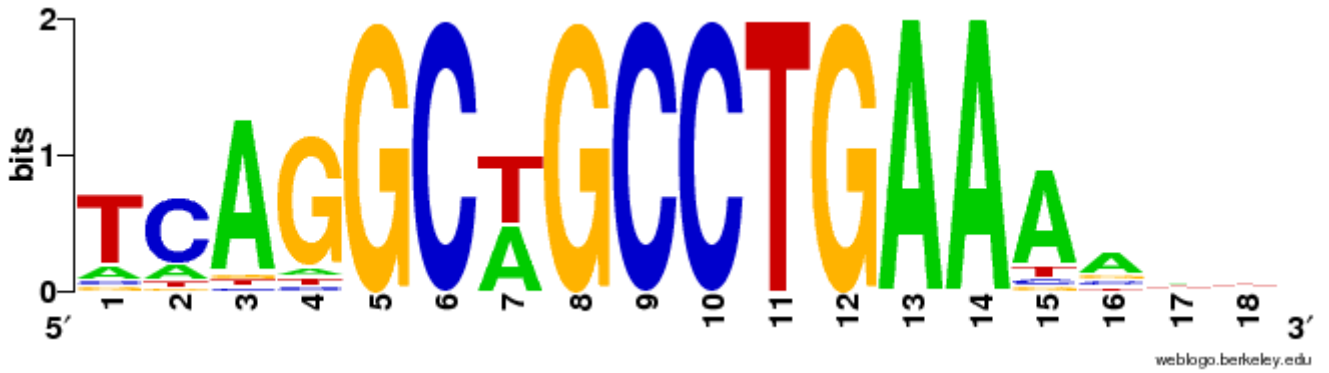


*Kingella denitrificans* ATCC 33394 (AA-king3DUS)



Figure S1: Sequence logos, single divergence permitted

*Simonsiella muelleri* ATCC 29453



(AG-kingDUS)



(AG-simDUS)



*Simonsiella muelleri* ATCC 29453

(positions -7 to +17)

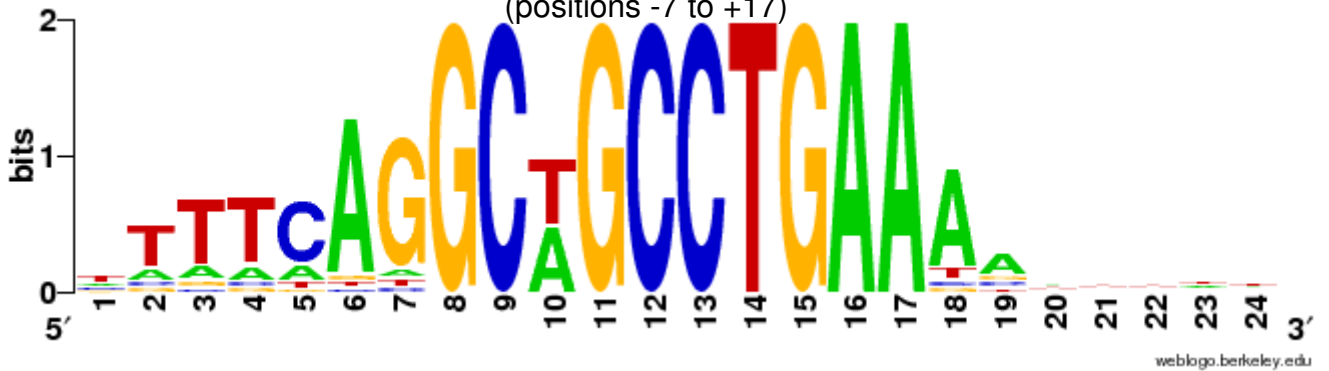


Figure S1: Sequence logos, no divergence permitted