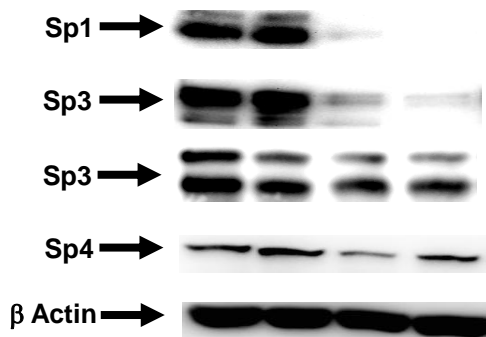


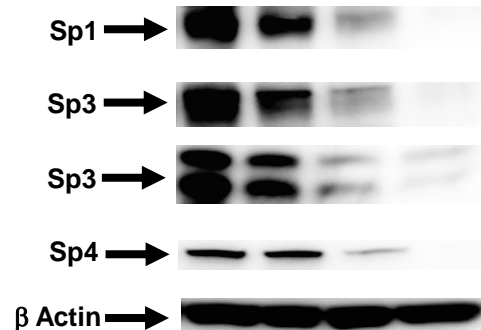
Supplementary Figure 3

DU145 – CDODA-Me (48 hr)

DMSO	+			
GSH		+		+
CDODA-Me (2.5 uM)			+	+

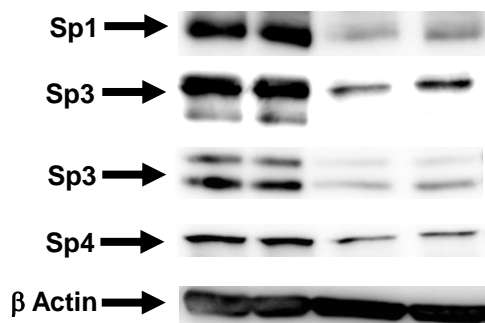


DMSO	+			
Glutoxin		+		+
CDODA-Me (2.5uM)			+	+

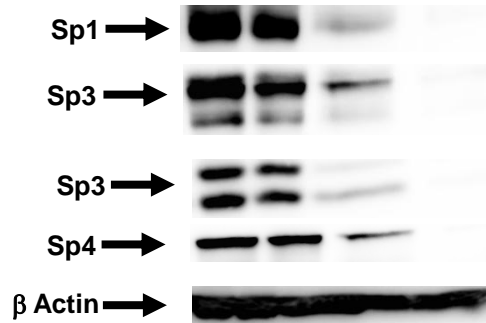


PC3 – CDODA-Me (48 hr)

DMSO	+			
GSH		+		+
CDODA-Me (2.5 uM)			+	+



DMSO	+			
Glutoxin		+		+
CDODA-Me (2.5uM)			+	+



Supplemental Figure 3. Effects of proteasome and ROS inhibitors. Cells were treated with CDODA-Me ± GSH or the proteasome inhibitor MG132 for 48 hr, and whole cell lysates were analyzed by western blots as outlined in the Materials and Methods.