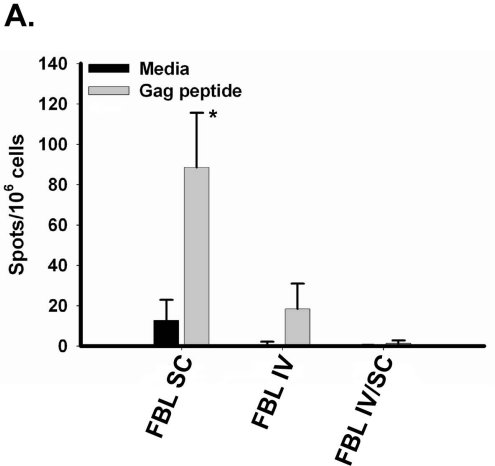


**Supplementary Figure 1. T cell tolerance is also generated in hosts following an IV inoculation of FBL cells.** FBL cells ( $10^5$ ) were introduced IV or SC into groups of 3 mice on day 0. A third group of mice received  $10^5$  FBL cells IV on day -6, followed by a SC inoculation of FBL cells on day 0. On day 6, spleen cells from individual mice were restimulated ex vivo with media or Gag peptide, and an IFN- $\gamma$  ELISPOT assay was performed (\* $p < 0.05$  for comparison between the numbers of IFN- $\gamma$  spot-forming cells in mice challenged with FBL cells SC and all other groups). Data are representative of 2 independent experiments with 3 mice/group.

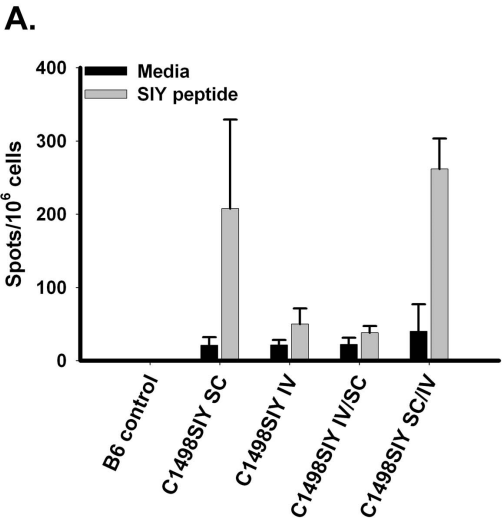
**Supplementary Figure 2. T cell tolerance to an IV C1498.SIY cells is prevented in previously primed antigen-specific T cells.** C1498.SIY cells were inoculated into C57BL/6 mice IV or SC on day 0. A third group received C1498.SIY cells IV on day -6, followed by a SC challenge with C1498.SIY cells on day 0 (IV/SC). A fourth group received C1498.SIY cells SC on day -6, followed by and IV challenge with C1498.SIY cells on day 0 (SC/IV). On day 6, spleen cells from individual mice were restimulated with media or SIY peptide in an IFN- $\gamma$  ELISPOT assay ( $p = \text{n.s.}$  for comparison of C1498.SIY SC versus SC/IV). Data are representative of 2 independent experiments with 3 mice/group.

**Supplementary Figure 3. CFSE dilution profiles of 2C and 2C<sup>Bcl-XL</sup> T cells in hosts challenged with C1498.SIY.** **A.** 2C T cells were purified, labeled with CFSE, and adoptively-transferred into groups of C57BL/6 mice. 24 hours later, mice were challenged with C1498.SIY cells IV, SC or remained tumor-free. On day 7, CFSE dilution of 2C T cells was analyzed by flow cytometry. Representative FACS plots for each cohort of mice are shown. **B.** 2C or 2C<sup>Bcl-XL</sup> T cells were purified, labeled with CFSE, and adoptively-transferred into groups of C57BL/6 mice. 24 hours later, mice were challenged with C1498.SIY cells IV, SC or remained tumor-free. On day 7, CFSE dilution of 2C T cells was analyzed by flow cytometry. Representative FACS plots for each cohort of mice are shown.

Supplementary Figure 1.



Supplementary Figure 2.



### Supplementary Figure 3.

