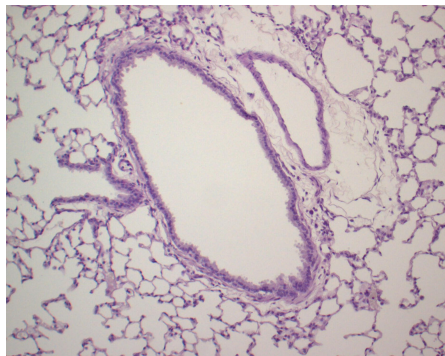
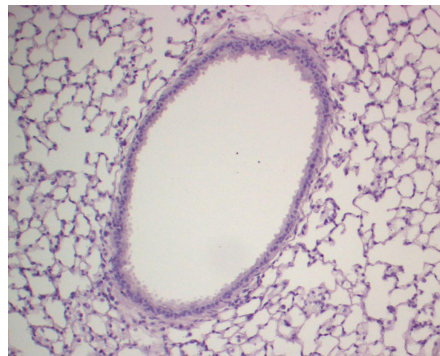


Supplemental Figure 1

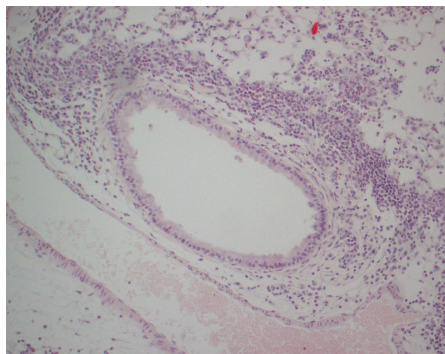
WT B6 Saline



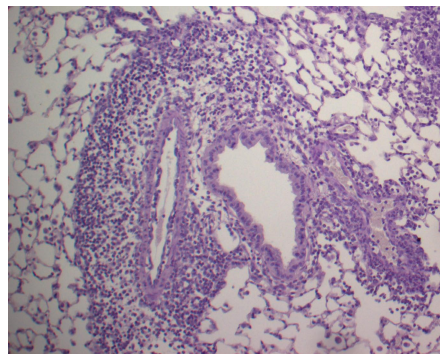
Ptprj^{TM-/TM-} B6 Saline



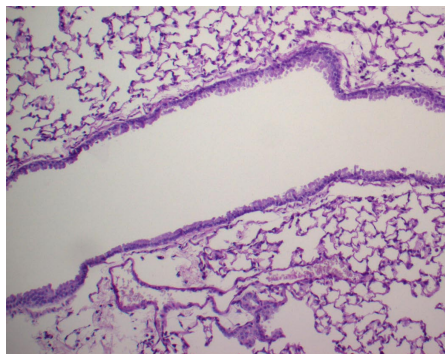
WT B6 OVA



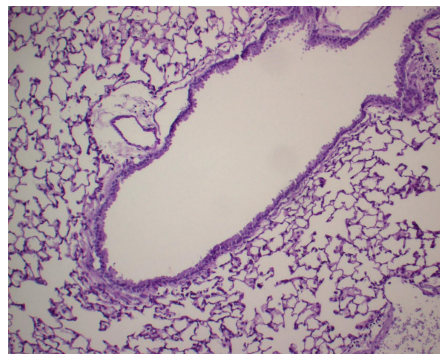
Ptprj^{TM-/TM-} B6 OVA



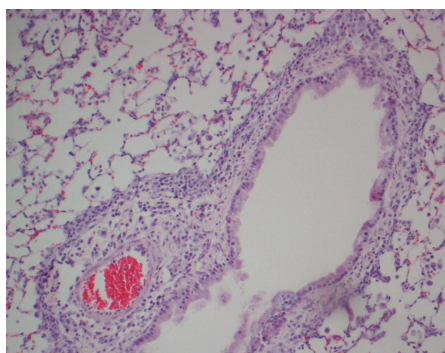
WT Balb/c Saline



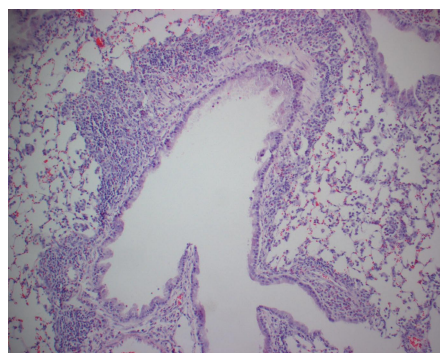
Ptprj^{TM-/TM-} Balb Saline



WT Balb/c OVA

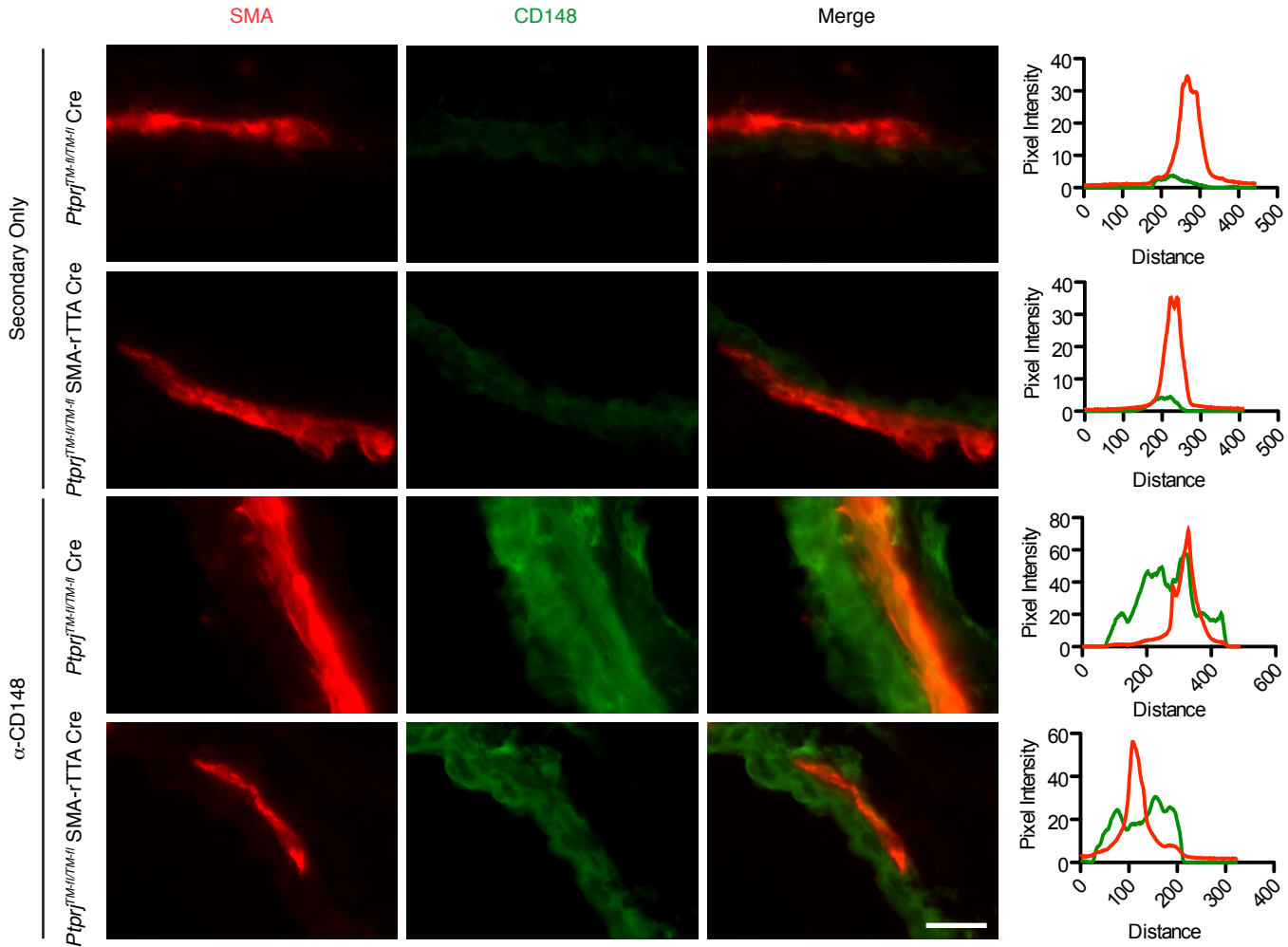


Ptprj^{TM-/TM-} Balb OVA



Supplemental Figure 1. Hematoxylin and eosin staining of lungs from mice sensitized and intranasally challenged with OVA peptide. 100x magnification.

Supplemental Figure 2



Supplemental Figure 2. Partial deletion of CD148 from airway smooth muscle. Immunofluorescence staining of mouse lung bronchi with primary antibody to CD148 (8A-1) and secondary goat-anti-hamster Alexa488 antibody. Anti-smooth muscle actin (SMA) conjugated to Cy3 was used to stain airway smooth muscle. Right column shows quantitative Image J analysis of line scans. Scale bar: 50 μ m.